

May 2017

# NAC-LWT

Legal Weight Truck Cask System

---

LWT-17A  
NRU/NRX Damaged  
Fuel Application

Supplemental  
Drawing Change

**NON-PROPRIETARY VERSION**

Docket No. 71-9225



Atlanta Corporate Headquarters: 3930 East Jones Bridge Road, Norcross, Georgia 30092 USA  
Phone 770-447-1144, Fax 770-447-1797, [www.nacintl.com](http://www.nacintl.com)

Enclosure 1

No. 71-9225 for NAC-LWT Cask

List of SAR Changes

NRU/NRX Damaged Fuel Application

Supplemental Drawing Change

NAC-LWT SAR, Revision 17A

May 2017

## List of SAR Changes, NAC-LWT SAR, Revision 17A

**Note:** The List of Effective Pages and the Chapter Tables of Contents, including the List of Figures and the List of Tables, were revised as needed to incorporate the following changes.

### Chapter 1

- Page 1-iii, modified the List of Drawings to reflect the new revision of Drawing 315-40-172.

### Chapter 2

- No changes.

### Chapter 3

- No changes.

### Chapter 4

- No changes.

### Chapter 5

- No changes.

### Chapter 6

- No changes.

### Chapter 7

- No changes.

### Chapter 8

- No changes.

### Chapter 9

- No changes.

**Enclosure 2**

**No. 71-9225 for NAC-LWT Cask**

**List of Drawing Changes**

**NRU/NRX Damaged Fuel Application**

**Supplemental Drawing Change**

**NAC-LWT SAR, Revision 17A**

**May 2017**

**List of Drawing Changes, NAC-LWT SAR, Revision LWT-17A**

**315-40-172, Lid Assembly, NRU-NRX, Revision 2**

Sheet 1:

1. Added delta note 5 that reads: "Item 2 (Mesh) is optional per certificate requirements."
2. Added delta note 5 symbol next to Item 2 in the B.O.M.

**Enclosure 3**

**No. 71-9225 for NAC-LWT Cask**

**Proposed Changes for Revision 67 of Certificate of Compliance**

**NRU/NRX Damaged Fuel Application**

**Supplemental Drawing Change**

**NAC-LWT SAR, Revision 17A**

**May 2017**

## CoC Sections (revised)

### CoC Page 4 of 32

- 5.(a)(3)(ii) Drawings (continued)  
LWT 315-40-172, Rev. 2 (Sheets 1 – 2) Lid Assembly, NRU/NRX

### CoC Page 18 of 32

- 5.(b)(1) Type and form of material (continued)  
(xix) Undamaged or damaged NRU or NRX fuel assemblies as specified below:

### CoC Page 27 of 32

- 5.(b)(2) Maximum quantity of material per package (continued)

- (xx) For the NRU/NRX fuel described in Item 5.(b)(1)(xix):

Up to 18 undamaged or damaged NRU or NRX fuel assemblies (or the equivalent number of loose elements) may be loaded per NRU/NRX fuel basket in accordance with NAC Drawing Nos. 315-40-172, 315-40-173, 315-40-174 and 315-40-175. Package configuration to be in accordance with NAC Drawing No. 315-40-170. Undamaged and damaged NRX fuel assemblies and damaged NRU fuel elements shall be placed in the fuel caddy. Placement of undamaged NRU fuel in a caddy is optional. NRU and NRX fuel may not be comingled within a single package. Undamaged and damaged NRU fuel may be comingled within a single package provided they are not comingled in a single fuel tube location. Undamaged and damaged NRX fuel may be comingled within a single package provided they are not comingled in a single fuel tube location. The fuel basket lid mesh screens are optional with exception of those fuel tube locations that have damaged fuel loaded. Each NRU/NRX basket fuel tube may contain unirradiated metallic dunnage provided the total payload weight in the basket fuel tube does not exceed 20 pounds. Each NRU/NRX fuel caddy may contain unirradiated metallic dunnage provided the total loaded weight of the fuel caddy does not exceed 20 pounds.

Enclosure 4

No. 71-9225 for NAC-LWT Cask

Volume 1

List of Effective Pages and SAR Page Changes

NAC-LWT SAR, Revision 17A

May 2017



May 2017

Revision 17A

# NAC-LWT

Legal Weight Truck Cask System

---

# SAFETY ANALYSIS REPORT

Volume 1 of 3

**NON-PROPRIETARY VERSION**

Docket No. 71-9225



**LIST OF EFFECTIVE PAGES**

Chapter 1

1-i ..... Revision 44  
1-ii ..... Revision 16B  
1-iii ..... Revision 44  
1-iv ..... Revision 17A  
1-v ..... Revision 44  
1-1 thru 1-4 ..... Revision 44  
1-5 ..... Revision 16B  
1-6 thru 1-7 ..... Revision 44  
1-8 ..... Revision 16B  
1.1-1 ..... Revision 44  
1.1-2 thru 1.1-3 ..... Revision 16B  
1.1-4 ..... Revision 44  
1.2-1 thru 1.2-18 ..... Revision 44  
1.2-19 thru 1.2-61 ..... Revision 16B  
1.3-1 ..... Revision 44  
1.4-1 ..... Revision 44  
1.5-1 ..... Revision 44

88 drawings in the  
Chapter 1 List of Drawings

Chapter 1 Appendices 1-A  
through 1-G

Chapter 2

2-i thru 2-xxv ..... Revision 44  
2-1 ..... Revision 44  
2.1.1-1 thru 2.1.1-2 ..... Revision 44  
2.1.2-1 thru 2.1.2-3 ..... Revision 44  
2.1.3-1 thru 2.1.3-8 ..... Revision 44  
2.2.1-1 ..... Revision 44  
2.2.1-2 ..... Revision 16B  
2.2.1-3 thru 2.2.1-5 ..... Revision 44  
2.3-1 ..... Revision 44

2.3.1-1 thru 2.3.1-13 ..... Revision 44  
2.4-1 ..... Revision 44  
2.4.1-1 ..... Revision 44  
2.4.2-1 ..... Revision 44  
2.4.3-1 ..... Revision 44  
2.4.4-1 ..... Revision 44  
2.4.5-1 ..... Revision 44  
2.4.6-1 ..... Revision 44  
2.5.1-1 thru 2.5.1-11 ..... Revision 44  
2.5.2-1 thru 2.5.2-17 ..... Revision 44  
2.6.1-1 thru 2.6.1-7 ..... Revision 44  
2.6.2-1 thru 2.6.2-7 ..... Revision 44  
2.6.3-1 ..... Revision 44  
2.6.4-1 ..... Revision 44  
2.6.5-1 thru 2.6.5-2 ..... Revision 44  
2.6.6-1 ..... Revision 44  
2.6.7-1 thru 2.6.7-137 ..... Revision 44  
2.6.8-1 ..... Revision 44  
2.6.9-1 ..... Revision 44  
2.6.10-1 thru 2.6.10-15 ..... Revision 44  
2.6.11-1 thru 2.6.11-12 ..... Revision 44  
2.6.12-1 thru 2.6.12-106 ..... Revision 44  
2.6.12-107 ..... Revision 16B  
2.6.12-108 thru 2.6.12-140 ..... Revision 44  
2.7-1 ..... Revision 44  
2.7.1-1 thru 2.7.1-117 ..... Revision 44  
2.7.2-1 thru 2.7.2-23 ..... Revision 44  
2.7.3-1 thru 2.7.3-5 ..... Revision 44  
2.7.4-1 ..... Revision 44  
2.7.5-1 thru 2.7.5-5 ..... Revision 44  
2.7.6-1 thru 2.7.6-4 ..... Revision 44  
2.7.7-1 thru 2.7.7-88 ..... Revision 44  
2.7.7-89 ..... Revision 16B  
2.7.7-90 thru 2.7.7-104 ..... Revision 44  
2.8-1 ..... Revision 44

**LIST OF EFFECTIVE PAGES (Continued)**

2.9-1 thru 2.9-24 ..... Revision 44  
2.10.1-1 thru 2.10.1-3 ..... Revision 44  
2.10.2-1 thru 2.10.2-49 ..... Revision 44  
2.10.3-1 thru 2.10.3-18 ..... Revision 44  
2.10.4-1 thru 2.10.4-11 ..... Revision 44  
2.10.5-1 ..... Revision 44  
2.10.6-1 thru 2.10.6-19 ..... Revision 44  
2.10.7-1 thru 2.10.7-66 ..... Revision 44  
2.10.8-1 thru 2.10.8-67 ..... Revision 44  
2.10.9-1 thru 2.10.9-9 ..... Revision 44  
2.10.10-1 thru 2.10.10-97 ..... Revision 44  
2.10.11-1 thru 2.10.11-10 ..... Revision 44  
2.10.12-1 thru 2.10.12-31 ..... Revision 44  
2.10.13-1 thru 2.10.13-17 ..... Revision 44  
2.10.14-1 thru 2.10.14-38 ..... Revision 44  
2.10.15-1 thru 2.10.15-10 ..... Revision 44  
2.10.16-1 thru 2.10.16-5 ..... Revision 44

Chapter 3

3-i ..... Revision 16B  
3-ii thru 3-v ..... Revision 44  
3.1-1 thru 3.1-3 ..... Revision 16B  
3.2-1 thru 3.2-11 ..... Revision 44  
3.3-1 ..... Revision 44  
3.4-1 thru 3.4-38 ..... Revision 44  
3.4-39 thru 3.4-61 ..... Revision 16B  
3.4-62 thru 3.4-109 ..... Revision 44  
3.5-1 thru 3.5-13 ..... Revision 44  
3.5-14 thru 3.5-20 ..... Revision 16B  
3.5-21 thru 3.5-43 ..... Revision 44  
3.6-1 thru 3.6-12 ..... Revision 44

Chapter 4

4-i thru 4-iii ..... Revision 44  
4.1-1 thru 4.1-4 ..... Revision 44

4.2-1 thru 4.2-4 ..... Revision 44  
4.3-1 thru 4.3-4 ..... Revision 44  
4.4-1 ..... Revision 44  
4.5-1 thru 4.5-43 ..... Revision 44

Chapter 5

5-i thru 5-xv ..... Revision 44  
5-1 thru 5-4 ..... Revision 44  
5.1.1-1 thru 5.1.1-21 ..... Revision 44  
5.2.1-1 thru 5.2.1-7 ..... Revision 44  
5.3.1-1 thru 5.3.1-2 ..... Revision 44  
5.3.2-1 ..... Revision 44  
5.3.3-1 thru 5.3.3-8 ..... Revision 44  
5.3.4-1 thru 5.3.4-27 ..... Revision 44  
5.3.5-1 thru 5.3.5-4 ..... Revision 44  
5.3.6-1 thru 5.3.6-22 ..... Revision 44  
5.3.7-1 thru 5.3.7-19 ..... Revision 44  
5.3.8-1 thru 5.3.8-25 ..... Revision 44  
5.3.9-1 thru 5.3.9-26 ..... Revision 44  
5.3.10-1 thru 5.3.10-14 ..... Revision 44  
5.3.11-1 thru 5.3.11-47 ..... Revision 44  
5.3.12-1 thru 5.3.12-26 ..... Revision 44  
5.3.13-1 thru 5.3.13-18 ..... Revision 44  
5.3.14-1 thru 5.3.14-22 ..... Revision 44  
5.3.15-1 thru 5.3.15-9 ..... Revision 44  
5.3.16-1 thru 5.3.16-5 ..... Revision 44  
5.3.17-1 thru 5.3.17-43 ..... Revision 44  
5.3.18-1 thru 5.3.18-2 ..... Revision 44  
5.3.19-1 thru 5.3.19-9 ..... Revision 44  
5.3.20-1 thru 5.3.20-29 ..... Revision 44  
5.3.21-1 ..... Revision 16B  
5.3.21-2 thru 5.3.21-45 ..... Revision 44  
5.3.22-1 thru 5.3.22-34 ..... Revision 44  
5.3.23-1 thru 5.3.23-49 ..... Revision 44  
5.4.1-1 thru 5.4.1-6 ..... Revision 44

**LIST OF EFFECTIVE PAGES (Continued)**

Chapter 6

6-i thru 6-xviii .....	Revision 44	6.4.4-1 thru 6.4.4-24.....	Revision 44
6-vii .....	Revision 16B	6.4.5-1 thru 6.4.5-51 .....	Revision 44
6-viii thru 6-xvi .....	Revision 44	6.4.6-1 thru 6.4.6-22.....	Revision 44
6-xvii .....	Revision 16B	6.4.7-1 thru 6.4.7-13.....	Revision 44
6-xviii.....	Revision 44	6.4.8-1 thru 6.4.8-14.....	Revision 44
6-1 thru 6-2 .....	Revision 44	6.4.9-1 thru 6.4.9-9.....	Revision 44
6.1-1 thru 6.1-6 .....	Revision 44	6.4.10-1 thru 6.4.10-18.....	Revision 44
6.2-1 .....	Revision 44	6.4.11-1 thru 6.4.11-7.....	Revision 44
6.2.1-1 thru 6.2.1-3 .....	Revision 44	6.5.1-1 thru 6.5.1-13.....	Revision 44
6.2.2-1 thru 6.2.2-3 .....	Revision 44	6.5.2-1 thru 6.5.2-4.....	Revision 44
6.2.3-1 thru 6.2.3-7 .....	Revision 44	6.5.3-1 thru 6.5.3-2.....	Revision 44
6.2.4-1 .....	Revision 44	6.5.4-1 thru 6.5.4-46.....	Revision 44
6.2.5-1 thru 6.2.5-5 .....	Revision 44	6.5.5-1 thru 6.5.5-15.....	Revision 44
6.2.6-1 thru 6.2.6-3 .....	Revision 44	6.5.6-1 thru 6.5.6-15.....	Revision 44
6.2.7-1 thru 6.2.7-2 .....	Revision 44	6.5.7-1 thru 6.5.7-18.....	Revision 44
6.2.8-1 thru 6.2.8-3 .....	Revision 44	6.7.1-1 thru 6.7.1-19.....	Revision 44
6.2.9-1 thru 6.2.9-4 .....	Revision 44	6.7.2-1 thru 6.7.2-16.....	Revision 44
6.2.10-1 thru 6.2.10-3 .....	Revision 44	6.7.3-1 thru 6.7.3-30.....	Revision 16B
6.2.11-1 thru 6.2.11-3 .....	Revision 44	6.7.4-1 thru 6.7.4-28.....	Revision 44
6.2.12-1 thru 6.2.12-4 .....	Revision 44	6.7.5-1 thru 6.7.5-16.....	Revision 44
6.3.1-1 thru 6.3.1-6 .....	Revision 44		
6.3.2-1 thru 6.3.2-4 .....	Revision 44	<u>Appendix 6.6</u>	
6.3.3-1 thru 6.3.3-9 .....	Revision 44	6.6-i thru 6.6-iii .....	Revision 44
6.3.4-1 thru 6.3.4-10 .....	Revision 44	6.6-1.....	Revision 44
6.3.5-1 thru 6.3.5-12 .....	Revision 44	6.6.1-1 thru 6.6.1-111.....	Revision 44
6.3.6-1 thru 6.3.6-9 .....	Revision 44	6.6.2-1 thru 6.6.2-56.....	Revision 44
6.3.7-1 thru 6.3.7-4 .....	Revision 44	6.6.3-1 thru 6.6.3-73.....	Revision 44
6.3.8-1 thru 6.3.8-7 .....	Revision 44	6.6.4-1 thru 6.6.4-77.....	Revision 44
6.3.9-1 thru 6.3.9-7 .....	Revision 44	6.6.5-1 thru 6.6.5-101.....	Revision 44
6.3.10-1 thru 6.3.10-2 .....	Revision 44	6.6.6-1 thru 6.6.6-158.....	Revision 44
6.4.1-1 thru 6.4.1-10 .....	Revision 44	6.6.7-1 thru 6.6.7-84.....	Revision 44
6.4.2-1 thru 6.4.2-10 .....	Revision 44	6.6.8-1 thru 6.6.8-183.....	Revision 44
6.4.3-1 thru 6.4.3-35 .....	Revision 44	6.6.9-1 thru 6.6.9-53.....	Revision 44
		6.6.10-1 thru 6.6.10-38.....	Revision 44
		6.6.11-1 thru 6.6.11-53.....	Revision 44

**LIST OF EFFECTIVE PAGES (Continued)**

6.6.12-1 thru 6.6.12-20 ..... Revision 44  
6.6.13-1 thru 6.6.13-22 ..... Revision 44  
6.6.14-1 thru 6.6.14-7 ..... Revision 44  
6.6.15-1 thru 6.6.15-45 ..... Revision 44  
6.6.16-1 thru 6.6.16-30 ..... Revision 44  
6.6.17-1 thru 6.6.17-7 ..... Revision 44  
6.6.18-1 thru 6.6.18-34 ..... Revision 44  
6.6.19-1 thru 6.6.19-3 ..... Revision 44

Chapter 7

7-i thru 7-iii ..... Revision 44  
7.1-1 thru 7.1-60 ..... Revision 44  
7.1-61 ..... Revision 16B  
7.1-62 ..... Revision 44  
7.1-63 ..... Revision 16B  
7.1-64 thru 7.1-82 ..... Revision 44  
7.2-1 thru 7.2-17 ..... Revision 44

Chapter 8

8-i ..... Revision 44  
8.1-1 thru 8.1-15 ..... Revision 44  
8.2-1 thru 8.2-6 ..... Revision 44  
8.3-1 thru 8.3-4 ..... Revision 44

Chapter 9

9-i ..... Revision 44  
9-1 thru 9-11 ..... Revision 44

**List of Drawings**

315-40-01		Rev 7	Legal Weight Truck Transport Cask Assembly
315-40-02	Sheets 1 – 2	Rev 25	NAC-LWT Cask Body Assembly
315-40-03	Sheets 1 – 6	Rev 6*	NAC-LWT Transport Cask Body
315-40-03	Sheets 1 – 7	Rev 22	NAC-LWT Transport Cask Body
315-40-04		Rev 12	NAC-LWT Transport Cask Lid Assembly
315-40-05	Sheets 1 – 2	Rev 10	NAC-LWT Transport Cask Upper Impact Limiter
315-40-06		Rev 10	NAC-LWT Transport Cask Lower Impact Limiter
315-40-08	Sheets 1 – 5	Rev 18	NAC-LWT Transport Cask Parts Detail
315-40-09		Rev 2	NAC-LWT PWR Basket Spacer
315-40-10	Sheets 1 – 2	Rev 8	NAC-LWT Cask PWR Basket
315-40-11		Rev 2	NAC-LWT BWR Fuel Basket Assembly
315-40-12		Rev 3	NAC-LWT Metal Fuel Basket Assembly
315-40-045		Rev 6	Weldment, 7 Element Basket, 42 MTR Fuel Base Module
315-40-046		Rev 6	Weldment, 7 Element Basket, 42 MTR Fuel Intermediate Module
315-40-047		Rev 6	Weldment, 7 Element Basket, 42 MTR Fuel Top Module
315-40-048		Rev 3	Legal Weight Truck Transport Cask Assembly, 42 MTR Element
315-40-049		Rev 6	Weldment, 7 Element Basket, 28 MTR Fuel Base Module
315-40-050		Rev 6	Weldment, 7 Element Basket, 28 MTR Fuel Intermediate Module
315-40-051		Rev 6	Weldment, 7 Element Basket, 28 MTR Fuel Top Module
315-40-052		Rev 3	Legal Weight Truck Transport Cask Assembly, 28 MTR Element
315-40-070		Rev 6	Weldment, 7 Cell Basket, TRIGA Fuel Base Module
315-40-071		Rev 6	Weldment, 7 Cell Basket, TRIGA Fuel Intermediate Module
315-40-072		Rev 6	Weldment, 7 Cell Basket, TRIGA Fuel Top Module
315-40-079		Rev 6	Legal Weight Truck Transport Cask Assy, 120 TRIGA Fuel Elements or 480 Cluster Rods
315-40-080		Rev 4	Weldment, 7 Cell Poison Basket, TRIGA Fuel Base Module
315-40-081		Rev 4	Weldment, 7 Cell Poison Basket, TRIGA Fuel Intermediate Module
315-40-082		Rev 4	Weldment, 7 Cell Poison Basket, TRIGA Fuel Top Module
315-40-083		Rev 0	Spacer, LWT Cask Assembly, TRIGA Fuel
315-40-084		Rev 4	Legal Weight Truck Transport Cask Assy, 140 TRIGA Elements
315-40-085		Rev 1	Axial Fuel and Cell Block Spacers, MTR and TRIGA Fuel Baskets, NAC-LWT Cask
315-40-086		Rev 1	Assembly, Sealed Failed Fuel Can, TRIGA Fuel
315-40-087		Rev 7	Canister Lid Assembly, Sealed Failed Fuel Can, TRIGA Fuel
315-40-088		Rev 3	Canister Body Assembly, Sealed Failed Fuel Can, TRIGA Fuel
315-40-090		Rev 4	Weldment, 7 Element Basket, 35 MTR Fuel Base Module
315-40-091		Rev 4	Weldment, 7 Element Basket, 35 MTR Fuel Intermediate Module
315-40-092		Rev 4	Weldment, 7 Element Basket, 35 MTR Fuel Top Module
315-40-094		Rev 4	Legal Weight Truck Transport Cask Assembly, 35 MTR Element
315-40-096		Rev 3	Fuel Cluster Rod Insert, TRIGA Fuel
315-40-098	Sheets 1 - 3	Rev 6	PWR/BWR Rod Transport Canister Assembly
315-40-099	Sheets 1 - 3	Rev 3	Can Weldment, PWR/BWR Transport Canister

\* Packaging Unit Nos. 1, 2, 3, 4 and 5 are constructed in accordance with this revision of drawing.

List of Drawings (continued)

315-40-100	Sheets 1 - 5	Rev 4	Lids, PWR/BWR Transport Canister
315-40-101		Rev 0	4 X 4 Insert, PWR/BWR Transport Canister
315-40-102		Rev 2	5 X 5 Insert, PWR/BWR Transport Canister
315-40-103		Rev 0	Pin Spacer, PWR/BWR Transport Canister
315-40-104	Sheets 1 - 3	Rev 6	Legal Weight Truck Transport Cask Assy, PWR/BWR Rod Transport Canister
315-40-105	Sheets 1 - 2	Rev 3	PWR Insert PWR/BWR Transport Canister
315-40-106	Sheets 1 - 3	Rev 2	MTR Plate Canister, LWT Cask
315-40-108	Sheets 1 - 3	Rev 1	Weldment, 7 Cell Basket, Top Module, DIDO Fuel
315-40-109	Sheets 1 - 3	Rev 1	Weldment, 7 Cell Basket, Intermediate Module, DIDO Fuel
315-40-110	Sheets 1 - 3	Rev 1	Weldment, 7 Cell Basket, Base Module, DIDO Fuel
315-40-111		Rev 2	Legal Weight Truck, Transport Cask Assy, DIDO Fuel
315-40-113		Rev 0	Spacers, Top Module, DIDO Fuel
315-40-120	Sheets 1 - 3	Rev 2	Top Module, General Atomics IFM, LWT Cask
315-40-123	Sheets 1 - 2	Rev 1	Spacer, General Atomics IFM, LWT Cask
315-40-124		Rev 1	Transport Cask Assembly, General Atomics IFM, LWT Cask
315-40-125	Sheets 1 - 3	Rev 3	Transport Cask Assembly, Framatome/EPRI, LWT Cask
315-40-126	Sheets 1 - 2	Rev 2	Weldments, Framatome/EPRI, LWT Cask
315-40-127	Sheets 1 - 2	Rev 2	Spacer Assembly, TPBAR Shipment, LWT Cask
315-40-128	Sheets 1 - 2	Rev 4	Legal Weight Truck, Transport Cask Assy, TPBAR Shipment
032230		Rev A	RERTR Secondary Enclosure, General Atomics
032231		Rev A	HTGR Secondary Enclosure, General Atomics
032236		Rev B	RERTR Primary Enclosure, General Atomics
032237		Rev B	HTGR Primary Enclosure, General Atomics
315-40-129		Rev 2	Canister Body Assembly, Failed Fuel Can, PULSTAR
315-40-130		Rev 2	Assembly, Failed Fuel Can, PULSTAR
315-40-133	Sheets 1 - 2	Rev 2	Transport Cask Assembly, PULSTAR Shipment, LWT Cask
315-40-134		Rev 2	Body Weldment, Screened Fuel Can, PULSTAR Fuel
315-40-135		Rev 1	Assembly, Screened Fuel Can, PULSTAR Fuel
315-40-139		Rev 1	Legal Weight Truck Transport Cask Assy, ANSTO Fuel
315-40-140	Sheets 1 - 2	Rev 1	Weldment, 7 Cell Basket, Top Module, ANSTO Fuel
315-40-141	Sheets 1 - 2	Rev 1	Weldment, 7 Cell Basket, Intermediate Module, ANSTO Fuel
315-40-142	Sheets 1 - 2	Rev 1	Weldment, 7 Cell Basket, Base Module, ANSTO Fuel
315-40-145		Rev 0	Irradiated Hardware Lid Spacer, LWT Cask
315-40-148		Rev 0	Legal Weight Truck Transport Cask Assembly, ANSTO-DIDO Combination Basket
315-40-156	Sheets 1 - 4	Rev 3	Canister Assembly SLOWPOKE Fuel
315-40-158		Rev 0	Legal Weight Truck Transport Cask Assy, SLOWPOKE Fuel
315-40-170		Rev 1	LWT Transport Cask Assy., AECL NRU/NRX Components
315-40-172	Sheets 1 - 2	Rev 2	LID Assembly, NRU/NRX
315-40-173	Sheets 1 - 2	Rev 2	Basket Weldment, NRU/NRX
315-40-174		Rev 0	Basket Spacer, NRU/NRX
315-40-175		Rev 1	Caddy Assembly, NRU/NRX

10-234934

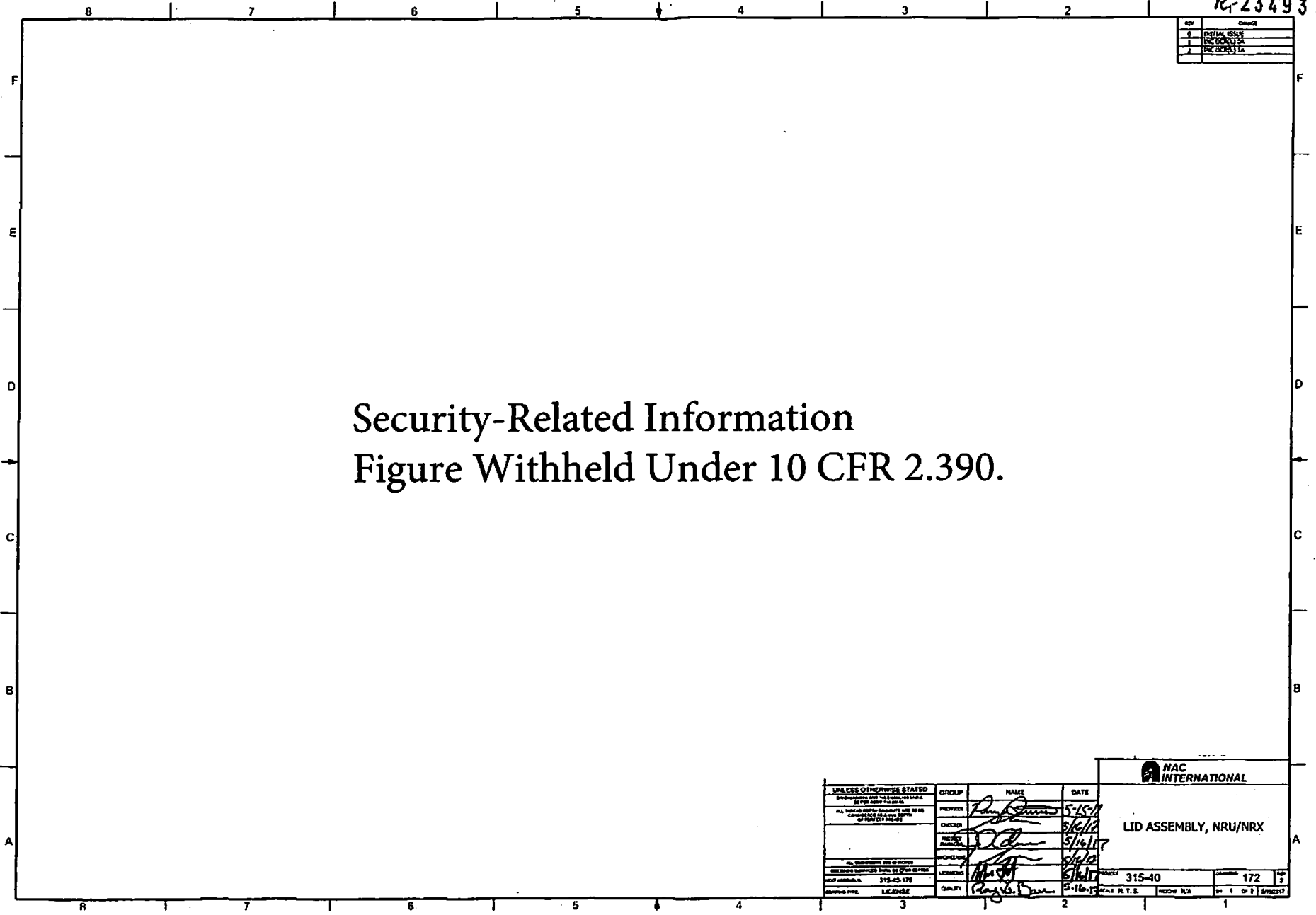
REV	DATE
1	05/16/17
2	05/16/17
3	05/16/17

Security-Related Information  
 Figure Withheld Under 10 CFR 2.390.

UNLESS OTHERWISE STATED			
Inspection and Test Results shall be the responsibility of the contractor.			
ALL TESTS AND INSPECTIONS ARE TO BE COMPLETED AS A PART OF THE CONTRACT.			
GROUP	NAME	DATE	
PREPARED	<i>[Signature]</i>	5/15/17	
CHECKED	<i>[Signature]</i>	5/16/17	
REVIEWED	<i>[Signature]</i>	5/16/17	
WORKED	<i>[Signature]</i>	5/16/17	
TESTED	<i>[Signature]</i>	5/16/17	
INSPECTED	<i>[Signature]</i>	5/16/17	
APPROVED	<i>[Signature]</i>	5/16/17	
DATE	5-16-17		
PROJECT	315-40		
ISSUE	172		
REVISED			
DATE			
BY			
DATE			
BY			


NAC INTERNATIONAL

LID ASSEMBLY, NRU/NRX





Security-Related Information  
Figure Withheld Under 10 CFR 2.390.

	
LID ASSEMBLY, NRU/NRX	
FIGURE 315-40	GROUP 172
DATE N.T.S.	REV N/A
1 OF 2 SHEETS	