

REGULATORY INFORMATION DISTRIBUTION SYSTEM (RIDS)

ACCESSION NBR: 8503040323 DOC. DATE: 85/02/22 NOTARIZED: NO DOCKET #
 FACIL: 50-387 Susquehanna Steam Electric Station, Unit 1, Pennsylvania 05000387
 50-388 Susquehanna Steam Electric Station, Unit 2, Pennsylvania 05000388
 AUTH. NAME AUTHOR AFFILIATION
 KENYON, B.D. Pennsylvania Power & Light Co.
 RECIP. NAME RECIPIENT AFFILIATION
 MURLEY, T.E. Region 1, Office of Director

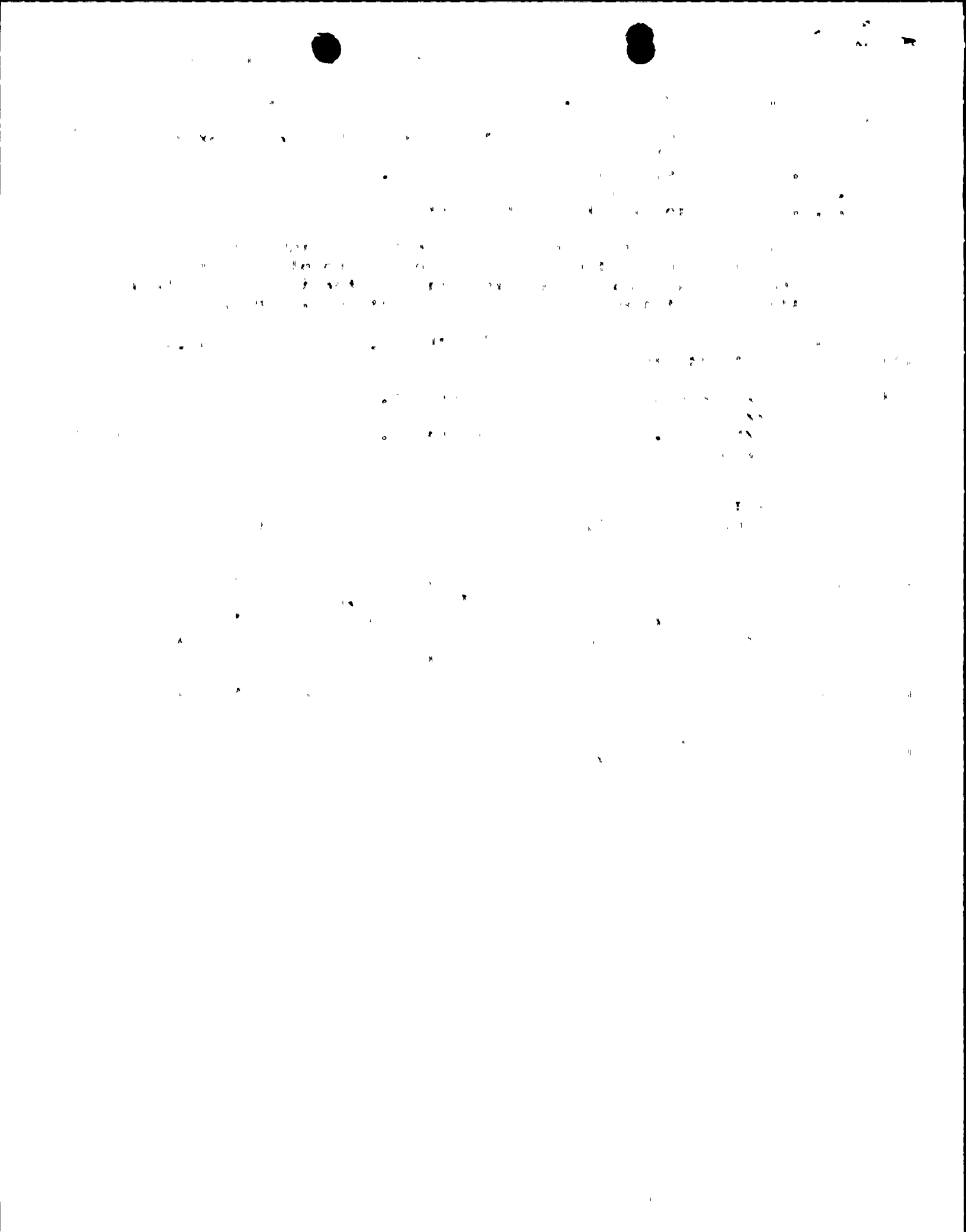
SUBJECT: Advises that hourly fire watch patrol established in accessible areas of reactor bldg pending resolution of unresolved items resulting from fire protection audit. Patrol will be maintained when units in Condition 1, 2 or 3.

DISTRIBUTION CODE: A006D COPIES RECEIVED: LTR 1 ENCL 0 SIZE: 111
 TITLE: OR Submittal: Fire Protection

NOTES: 1cy NMSS/FCAF/PM. LPDR 2cys Transcripts. 05000387
 OL: 07/17/82
 1cy NMSS/FCAF/PM., LPDR 2cys Transcripts. 05000388
 OL: 03/23/84

	RECIPIENT		COPIES			RECIPIENT		COPIES	
	ID	CODE/NAME	LTTR	ENCL		ID	CODE/NAME	LTTR	ENCL
	NRR	LB2 BC	01	3					
INTERNAL:	ACRS		11	3	ADM/LFMB			1	
	ELD/HDS4			1	IE WHITNEY, L			1	
	NRR	HOLONICH	07	2	NRR WAMBACH	06		1	
	NRR/DE/CEB		09	2	NRR/DL DIR			1	
	<u>REG FILE</u>		04	1	RGN1			1	
EXTERNAL:	LPDR		03	2	NRC PDR	02		1	
	NSIC		05	1					
NOTES:				3					

TOTAL NUMBER OF COPIES REQUIRED: LTTR 24 ENCL 21





Pennsylvania Power & Light Company

Two North Ninth Street • Allentown, PA 18101 • 215 / 770-5151

Bruce D. Kenyon
Vice President-Nuclear Operations
215/770-7502

FEB 22 1985

Dr. Thomas E. Murley
Regional Administrator - Region I
U.S. Nuclear Regulatory Commission
Region I
631 Park Avenue
King of Prussia, PA 19406

SUSQUEHANNA STEAM ELECTRIC STATION
INTERIM COMPENSATORY MEASURES
ER 100450 FILE 143
PLA-2417

Dear Dr. Murley:

In accordance with our commitment during the exit meeting following the Fire Protection Audit, we have established an hourly fire watch patrol in the accessible areas of the Unit 2 Reactor Building. This fire watch patrol will be maintained in Unit 2 whenever the unit is in Condition 1, 2, or 3; a similar hourly fire watch will be established in Unit 1 Reactor Building when that unit enters condition 1, 2, or 3. In the event that radiological or ALARA concerns require the discontinuance of the fire watch patrol in any area, then the surrounding area will be checked once per hour.

These actions are being taken as good operating practice pending resolution of the unresolved items resulting from the Fire Protection Audit.

Very truly yours,

B. D. Kenyon
Vice President-Nuclear Operations

cc: M. J. Campagnone USNRC
R. H. Jacobs USNRC

8503040323 850222
PDR ADDCK 05000387
F PDR

A006
110

RECEIVED-FECION 1
1985 FEB 25 PM 2:52

[Faint, illegible text, possibly a list or document content]