

REGULATOR INFORMATION DISTRIBUTION SYSTEM (RIDS)

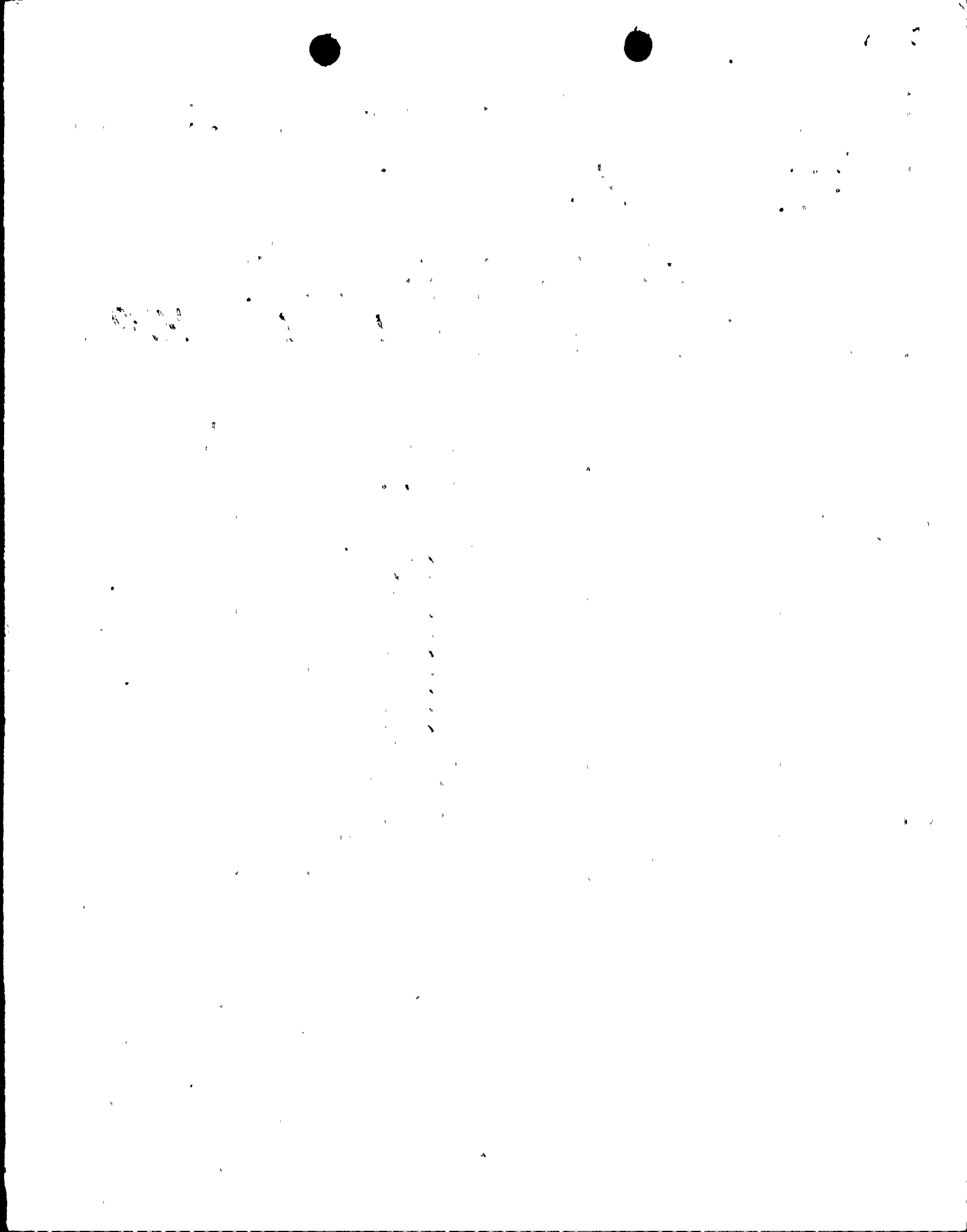
ACCESSION NBR: 8207150412 DOC. DATE: 82/07/13 NOTARIZED: NO DOCKET #
 FACIL: 50-387 Susquehanna Steam Electric Station, Unit 1, Pennsylvania 05000387
 50-388 Susquehanna Steam Electric Station, Unit 2, Pennsylvania 05000388
 AUTH. NAME AUTHOR AFFILIATION
 CURTIS, N.W. Pennsylvania Power & Light Co.
 RECIPIENT NAME RECIPIENT AFFILIATION
 SCHWENCER, A. Licensing Branch 2

SUBJECT: Forwards summary text of horizontal dynamic analysis reassessment. Text documents info presented by util & Bechtel at 820713 meeting w/NRC. All calculations associated w/calculating masses will be rechecked for errors.

DISTRIBUTION CODE: B001S COPIES RECEIVED: LTR 1 ENCL 1 SIZE: 142
 TITLE: PSAR/FSAR AMDTS and Related Correspondence

NOTES:

	RECIPIENT ID CODE/NAME	COPIES LTTR ENCL	RECIPIENT ID CODE/NAME	COPIES LTTR ENCL
	A/D LICENSNG	1 0	LIC BR #2 BC	1 0
	LIC BR #2 LA	1 0	PERCH, R.	1 1
INTERNAL:	ELD/HDS4	1 0	IE FILE	1 1
	IE/DEP EPDS 35	1 1	IE/DEP/EPLB 36	3 3
	NRR/DE/CEB 11	1 1	NRR/DE/eqB 13	3 3
	NRR/DE/GB 28	2 2	NRR/DE/HGEB 30	2 2
	NRR/DE/MEB 18	1 1	NRR/DE/MTEB 17	1 1
	NRR/DE/QAB 21	1 1	NRR/DE/SAB 24	1 1
	NRR/DE/SEB 25	1 1	NRR/DHFS/HFEB40	1 1
	NRR/DHFS/LQB 32	1 1	NRR/DHFS/OLB 34	1 1
	NRR/DHFS/PTRB20	1 1	NRR/DSI/AEB 26	1 1
	NRR/DSI/ASB 27	1 1	NRR/DSI/CPB 10	1 1
	NRR/DSI/CSB 09	1 1	NRR/DSI/ETSB 12	1 1
	NRR/DSI/ICSB 16	1 1	NRR/DSI/PSB 19	1 1
	NRR/DSI/RAB 22	1 1	NRR/DSI/RSB 23	1 1
	NRR/DST/LGB 33	1 1	REG FILE 04	1 1
	RGN1	2 2	RM/DDAMI/MIB	1 0
EXTERNAL:	ACRS 41	10 10	BNL (AMDTS ONLY)	1 1
	DMB/DSS (AMDTS)	1 1	FEMA-REP DIV 39	1 1
	LPDR 03	2 2	NRC PDR 02	1 1
	NSIC 05	1 1	NTIS	1 1





Pennsylvania Power & Light Company

Two North Ninth Street • Allentown, PA 18101 • 215 / 770-5151

Norman W. Curtis
Vice President-Engineering & Construction-Nuclear
215 / 770-5381

July 13, 1982

Mr. A. Schwencer, Chief
Licensing Branch No. 2
U.S. Nuclear Regulatory Commission
Washington, D.C. 20555

SUSQUEHANNA STEAM ELECTRIC STATION
HORIZONTAL DYNAMIC ANALYSIS REASSESSMENT
ER 100450/100508
PLA-1184

FILE NO. 821-10,148

Docket Nos. 50-387
50-388

Dear Mr. Schwencer:

Attached for your information and review is the Summary Text of the Horizontal Dynamic Analysis Reassessment for Susquehanna Steam Electric Station - Units 1 and 2, dated July 13, 1982. This text documents the information presented by Pennsylvania Power & Light Company and Bechtel in a meeting held with your staff on July 13, 1982. The text is written as a stand alone document. However, sections have been included to provide a copy of all transparencies used in the presentation (Ref. Appendix "A") as well as the response to specific questions raised by the Structural Engineering Branch following the presentation (Ref. Appendix "B"). Note that there is some duplication between figures referenced in the main body of the text and the transparencies used in the presentation.

In response to your request for a commitment to recheck calculations related to dynamic analysis for Susquehanna's Category I structures, we provide the following:

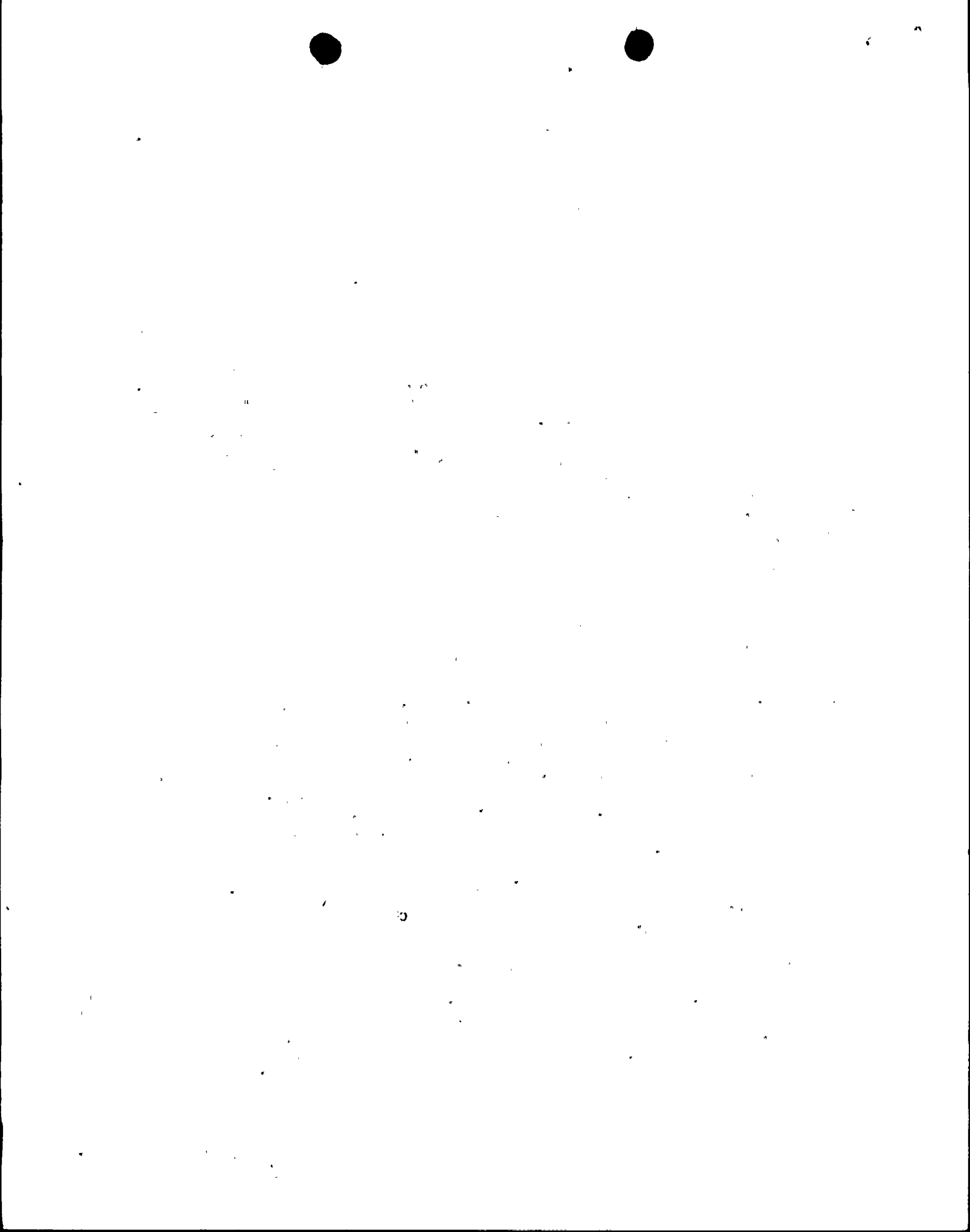
Definition of Recheck and Subsequent Review

All calculations associated with calculating masses, section properties and spring stiffnesses for use in the stick models will be rechecked to assure that these calculations do not contain errors to which the models would be sensitive. This recheck will be performed by Bechtel.

-1-

8207150412 820713
PDR ADOCK 05000387
A PDR

Boa!



July 13, 1982
PLA-1184
Page Two

Pennsylvania Power & Light Company will review these rechecked calculations to assure the recheck is complete and documented as required. This recheck will also cover transposing all calculation results to computer input.

The above recheck and review will be performed on the stick models for the following structures:

- o Containment
- o Reactor/Control Structure (vertical model)
- o Diesel Generator Building
- o ESSW Pumphouse

(Note that all springs for the vertical models have been previously reviewed.)

The schedule for the completion of this recheck and review will be as follows:

Containment by July 30, 1982 (or prior to criticality)
Reactor/Control structure (vertical model) by August 25, 1982
Diesel Generator & ESSW pumphouse by August 25, 1982

By the dates indicated above, Pennsylvania Power & Light Company will provide you with written documentation stating what was found from this exercise. If any errors are identified to which the models would be sensitive, an action plan to resolve those errors, including fixes, if required, and their corresponding schedule will accompany the above letter.

During the meeting, Pennsylvania Power & Light Company committed to provide details of General Electric's assessment to the revised horizontal response spectra together with the details of General Electric's assessment to the revised vertical response spectra by July 30, 1982.

If you have any additional questions on this matter, please contact us.

Very truly yours,

N.W. Curtis

N.W. Curtis
Vice President - Engineering & Construction - Nuclear

Attachment

cc: R.L. Perch - NRC

