

COMPARISON OF 20 MINIMUM VARIANCE  
TRIALS USING THE GKMIIM SOURCES WITH JAERI DATA

PRESENTED AT

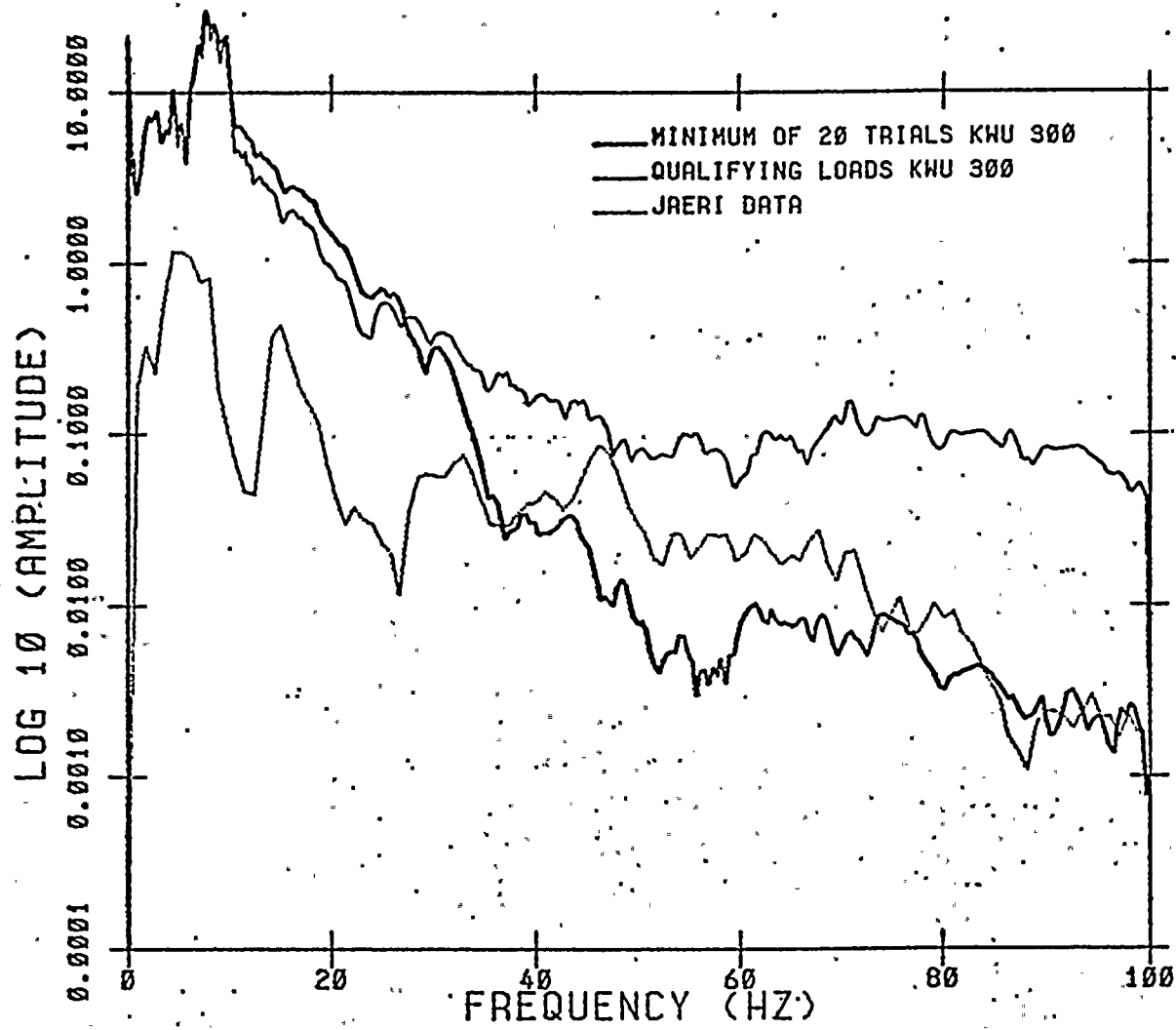
NRC/PP&L MEETING  
SAN JOSE, CA

APRIL 8, 1982

B. R. PATEL  
CREARE R&D  
4/6/82

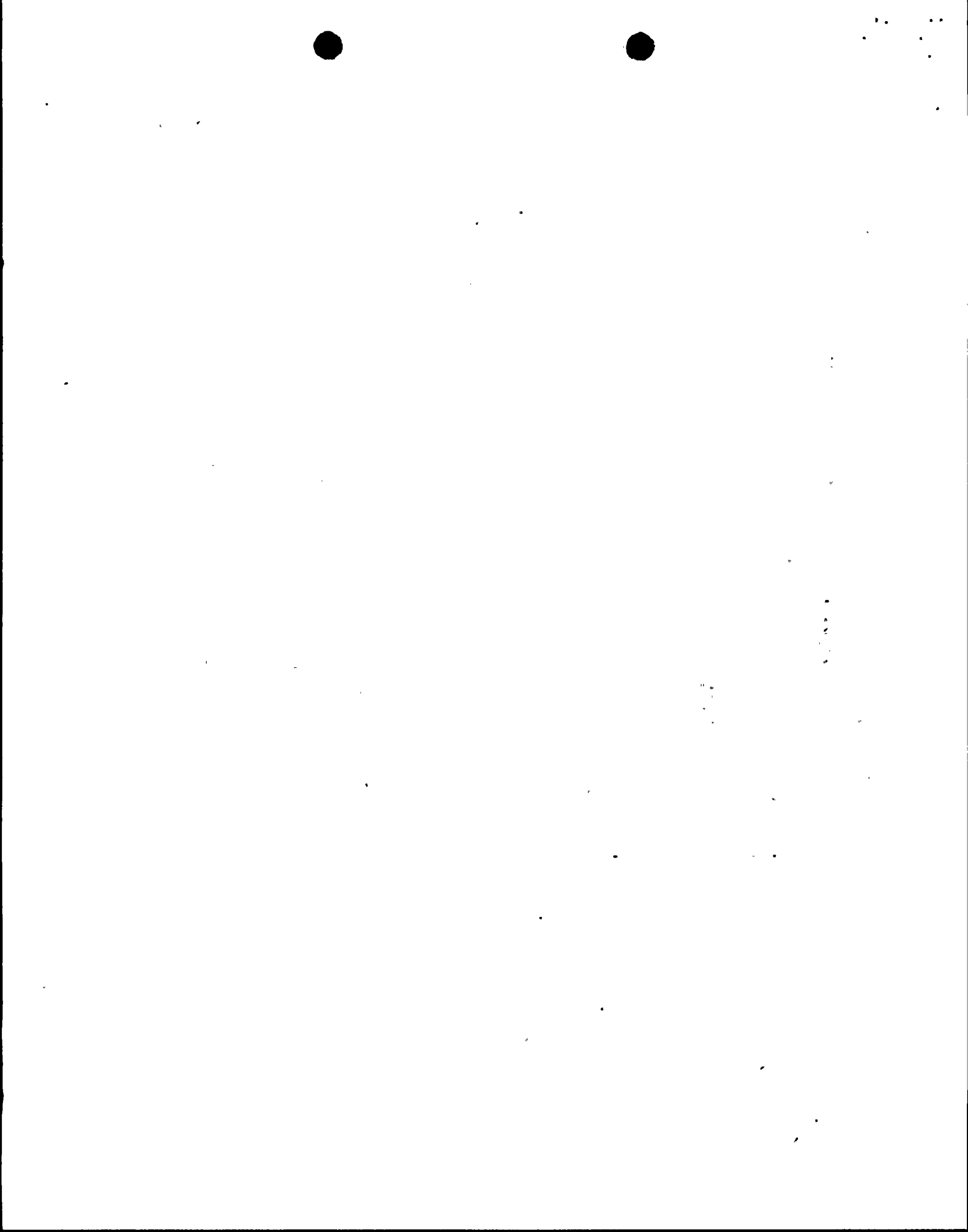
8204230413 //

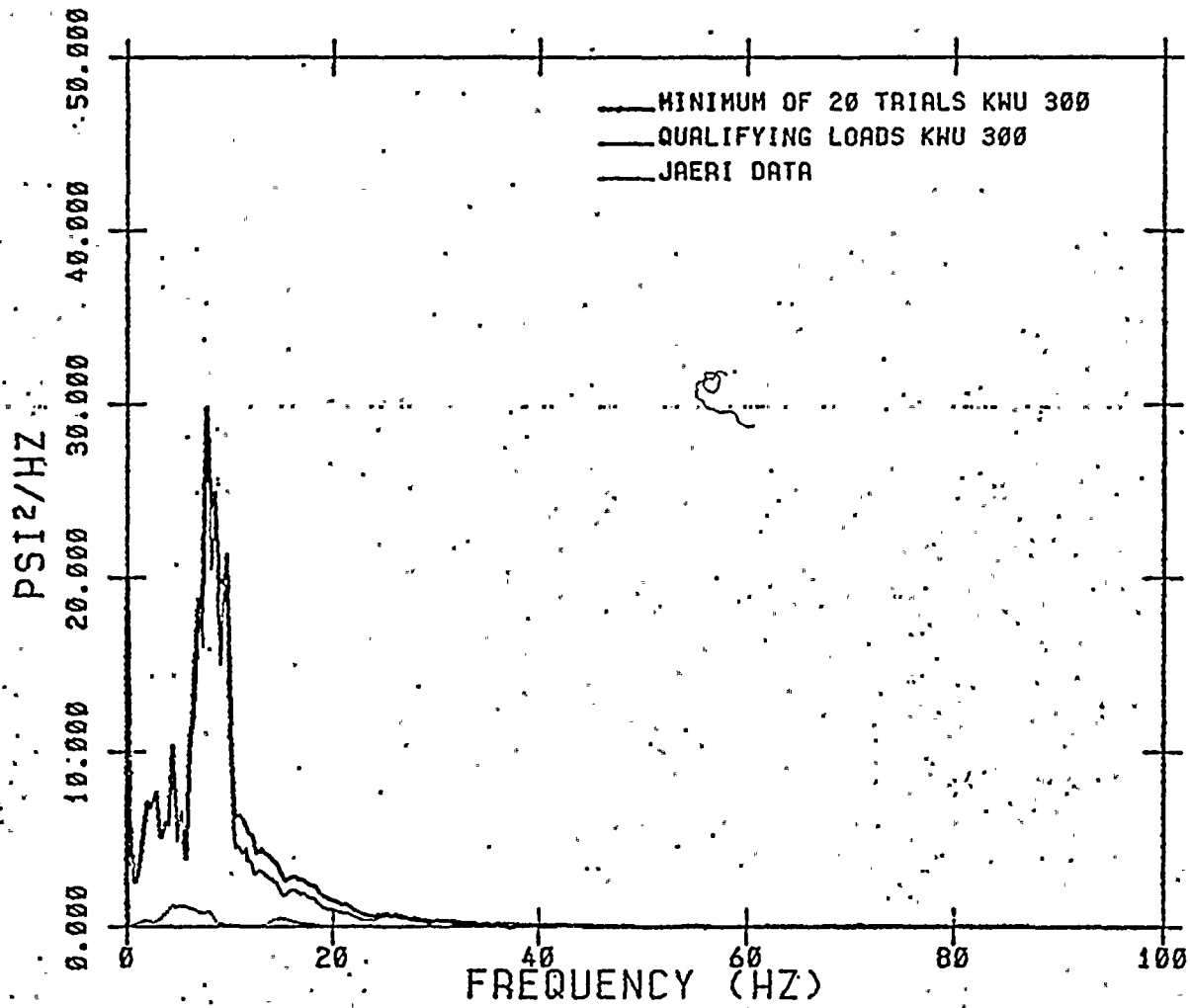
PSD COMPARISONS



MINIMUM ENVELOPE OF 20 MIN VARIANCE TRIALS AT 1.8M

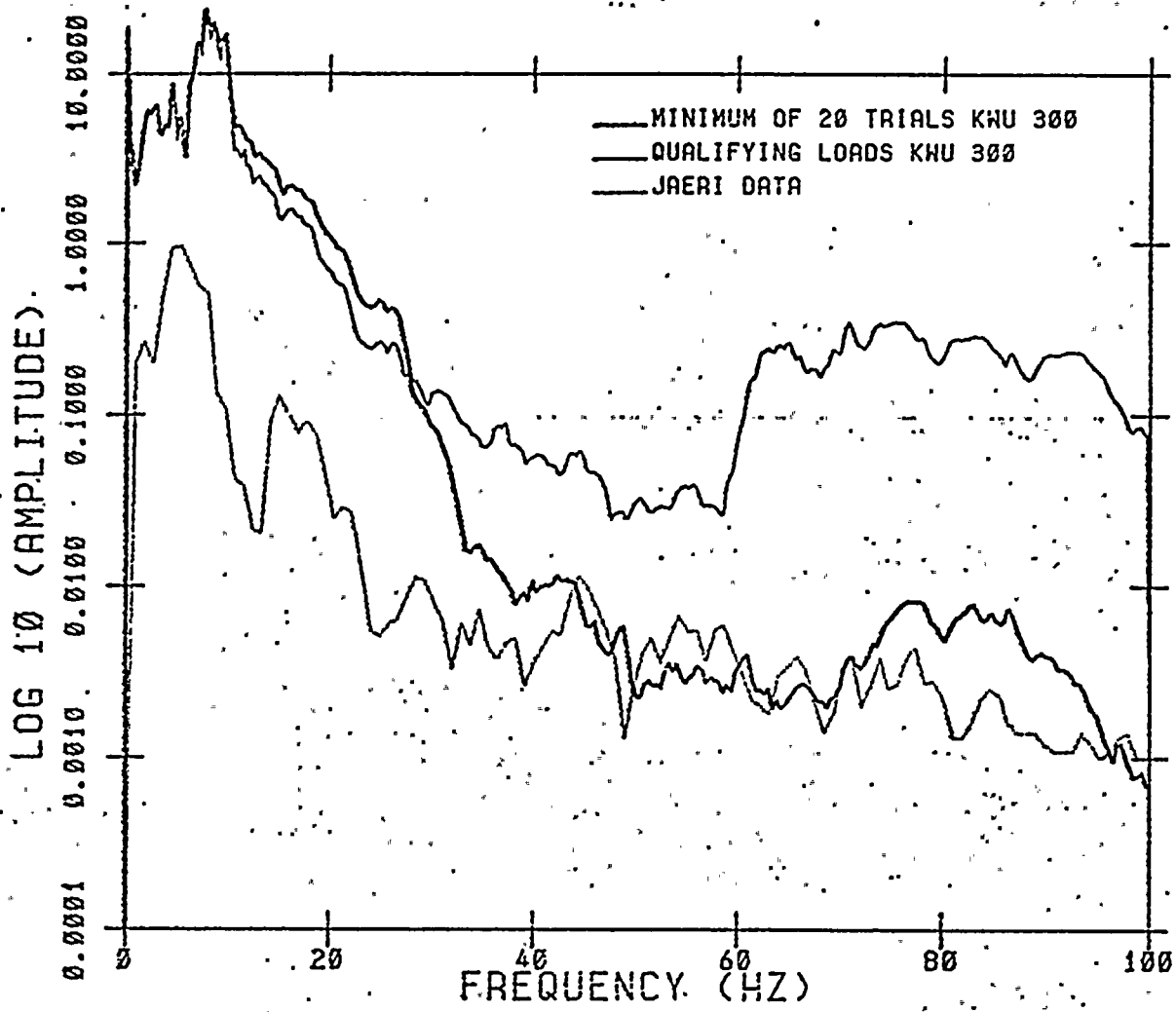
KHU AMPLITUDES ADJUSTED BY 1.69





MINIMUM ENVELOPE OF 20 MIN VARIANCE TRIALS AT 1.8M

KWU AMPLITUDES ADJUSTED BY 1.69

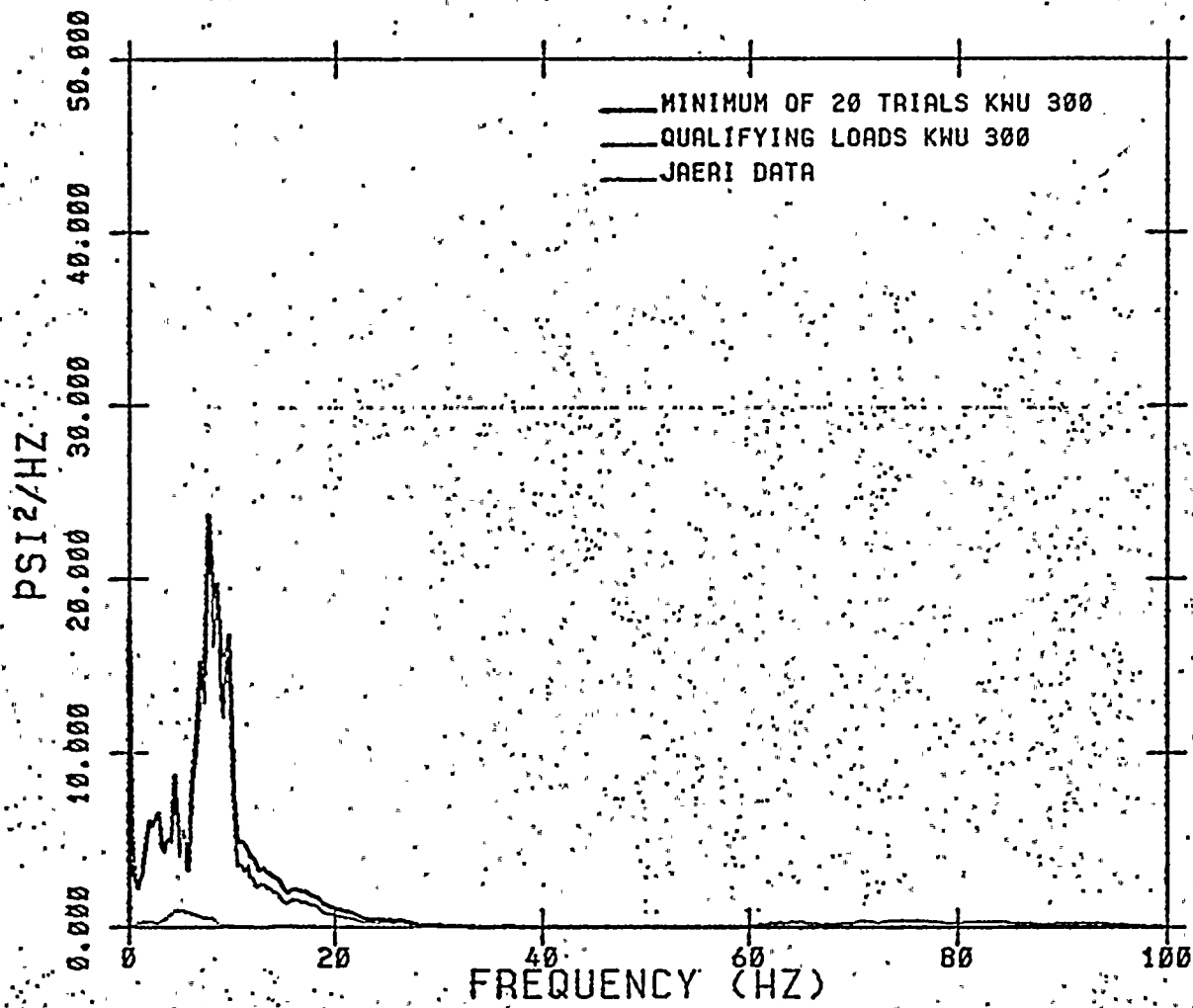


MINIMUM ENVELOPE OF 20 MIN VARIANCE TRIALS AT 3.6M

KWU AMPLITUDES ADJUSTED BY 1.69



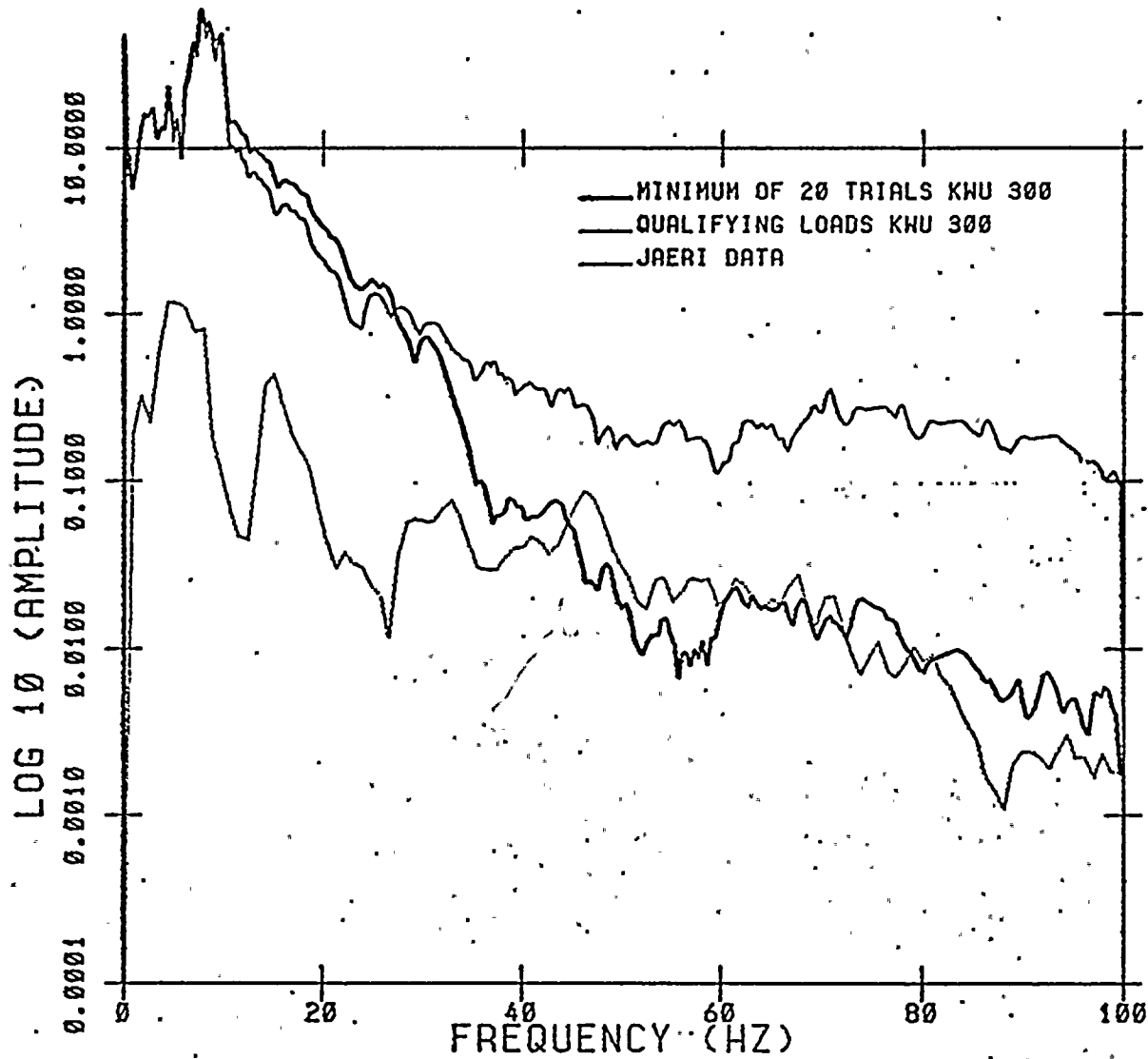
..  
..  
..



MINIMUM ENVELOPE OF 20 MIN VARIANCE TRIALS AT 3.6M

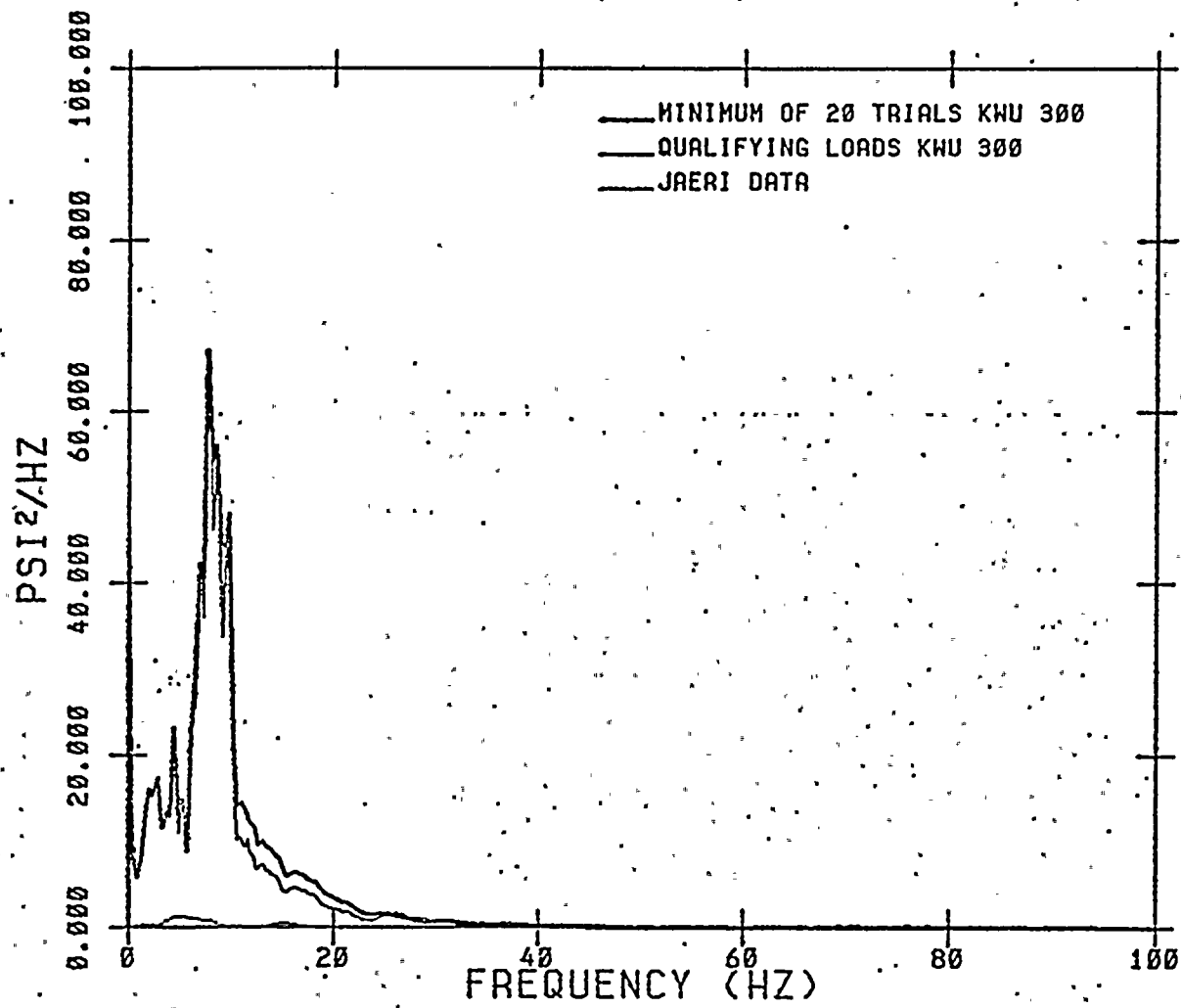
KWU AMPLITUDES ADJUSTED BY 1.69





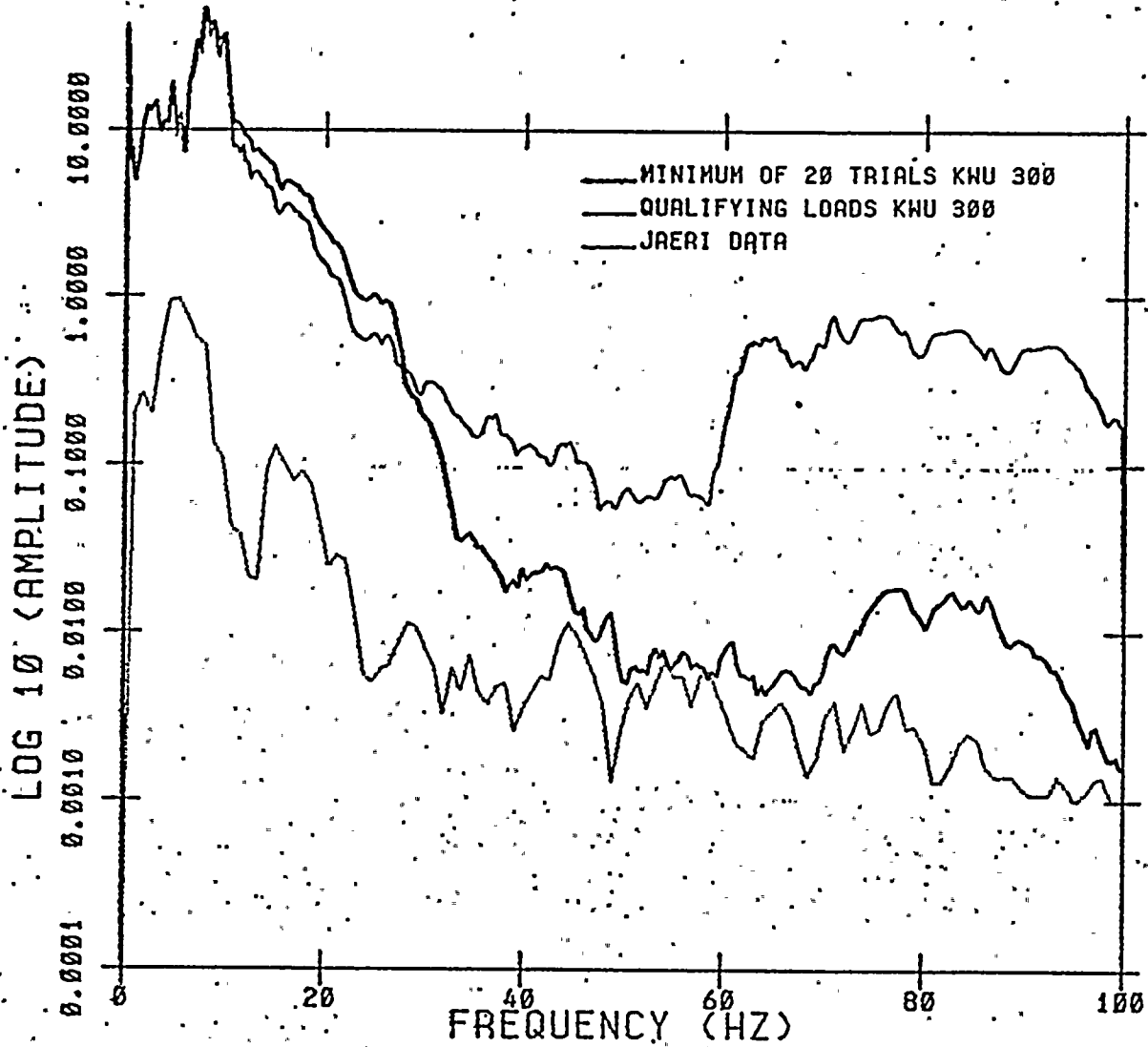
MINIMUM ENVELOPE OF 20 MIN VARIANCE TRIALS AT 1.8M

KWU AMPLITUDES ADJUSTED BY 3.8025



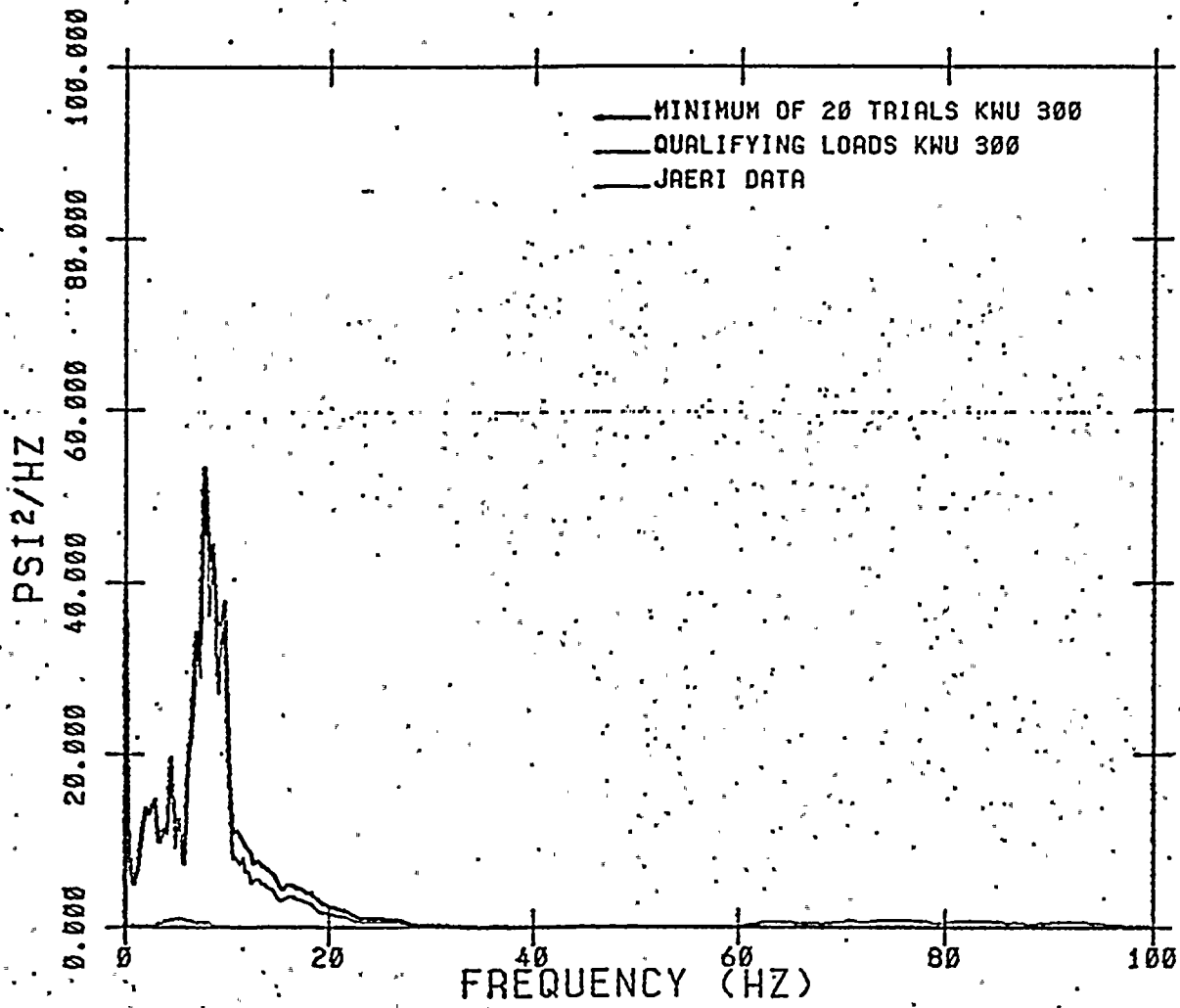
MINIMUM ENVELOPE OF 20 MIN VARIANCE TRIALS AT 1.8M

KWU AMPLITUDES ADJUSTED BY 3.8025



MINIMUM ENVELOPE OF 20 MIN VARIANCE TRIALS AT 3.6M

KWU AMPLITUDES ADJUSTED BY 3.8025



MINIMUM ENVELOPE OF 20 MIN VARIANCE TRIALS AT 3.6M

KWU AMPLITUDES ADJUSTED BY 3.8025

## CONCLUSIONS

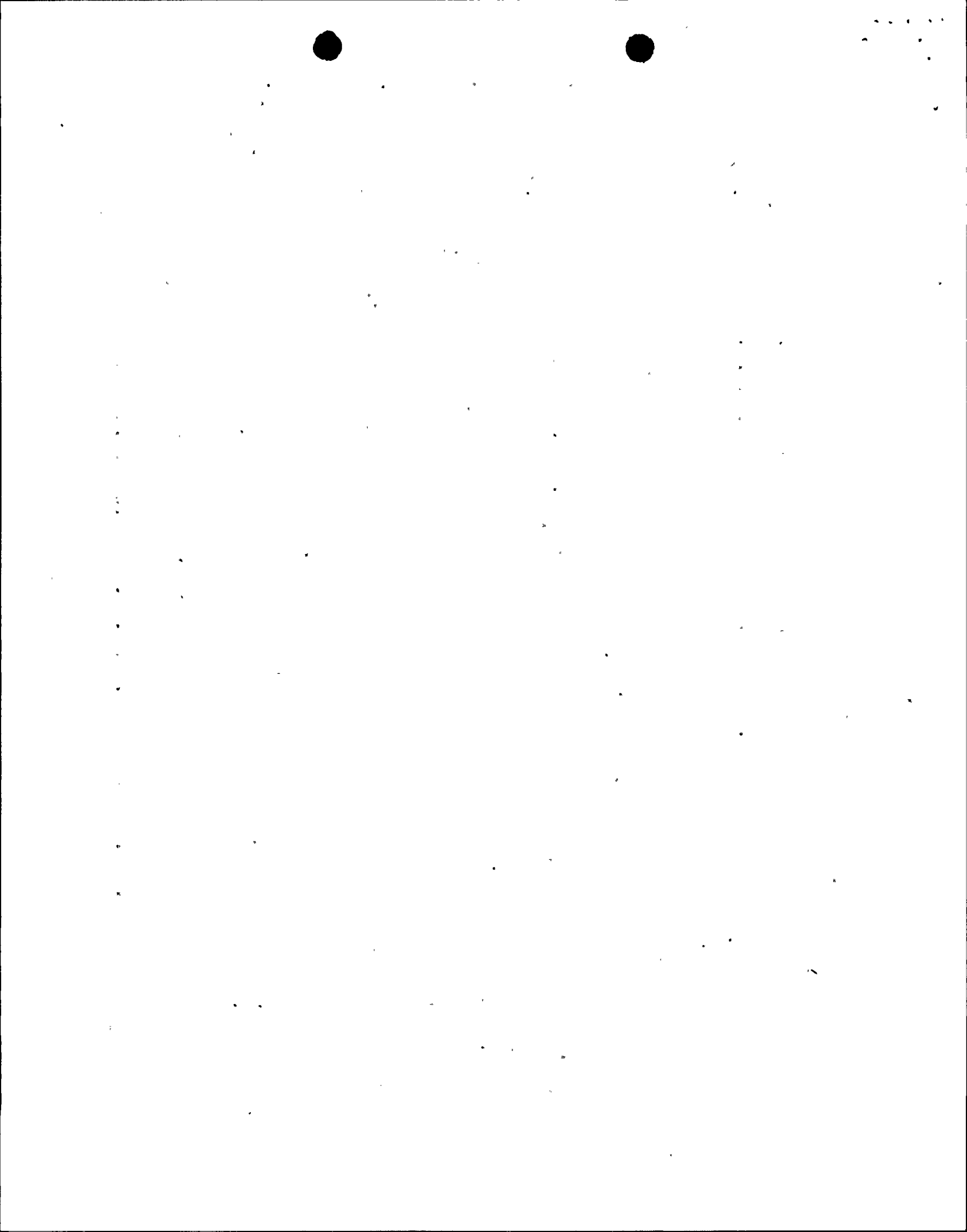
FOR AMPLITUDE FACTOR OF 1.3

- MINIMUM ENVELOPE OF 20 MINIMUM VARIANCE TRIALS BOUNDS THE MAXIMUM ENVELOPE OF JAERI DATA EXCEPT FOR A "POKE THROUGH" BETWEEN APPROXIMATELY 40 HZ AND APPROXIMATELY 80 HZ

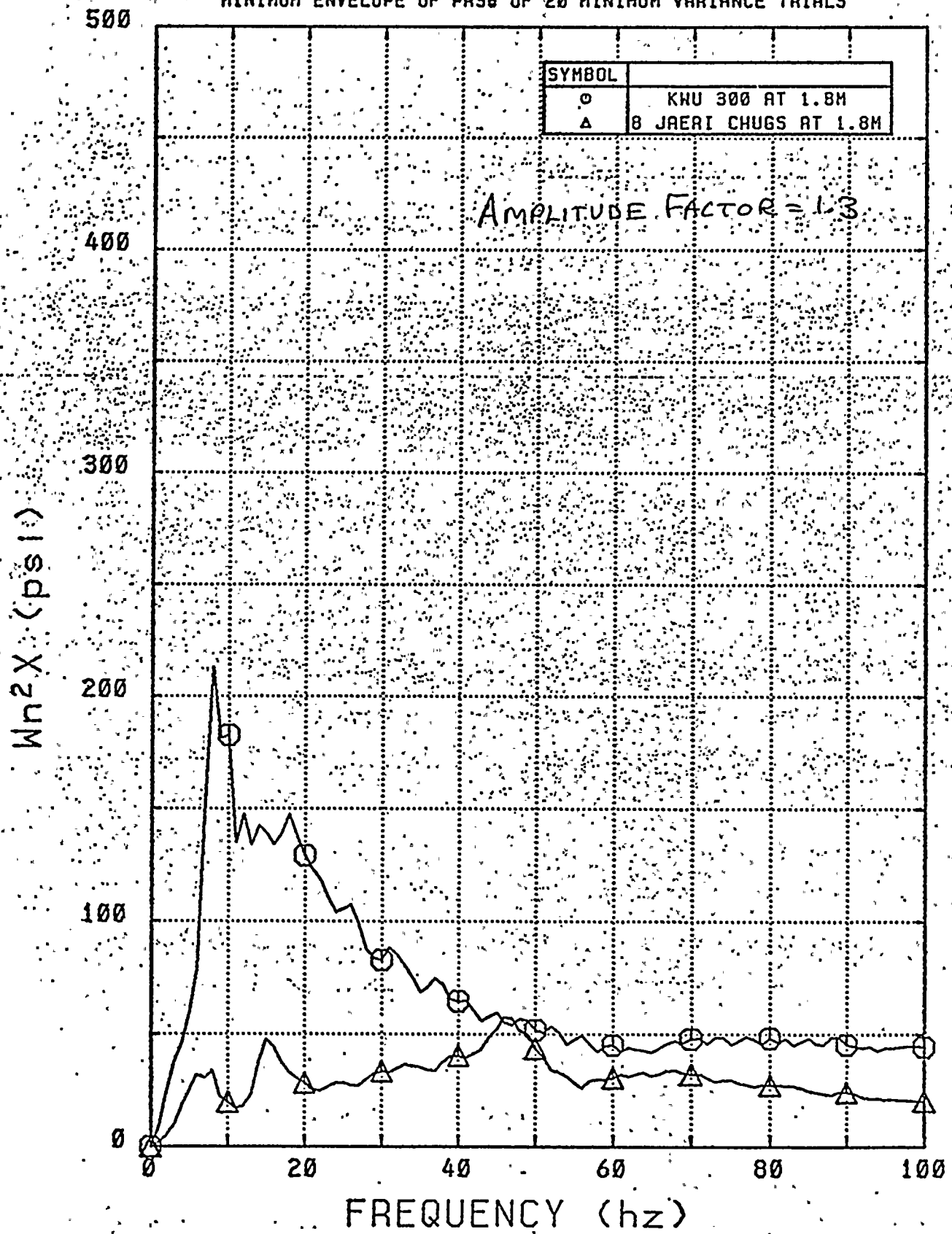
FOR AMPLITUDE FACTOR OF 1.95

- MINIMUM ENVELOPE OF 20 MINIMUM VARIANCE TRIALS BOUNDS THE MAXIMUM ENVELOPE OF JAERI DATA EXCEPT FOR A VERY INSIGNIFICANT "POKE THROUGH" BETWEEN 40 AND 60 HZ

PRS" COMPARISONS

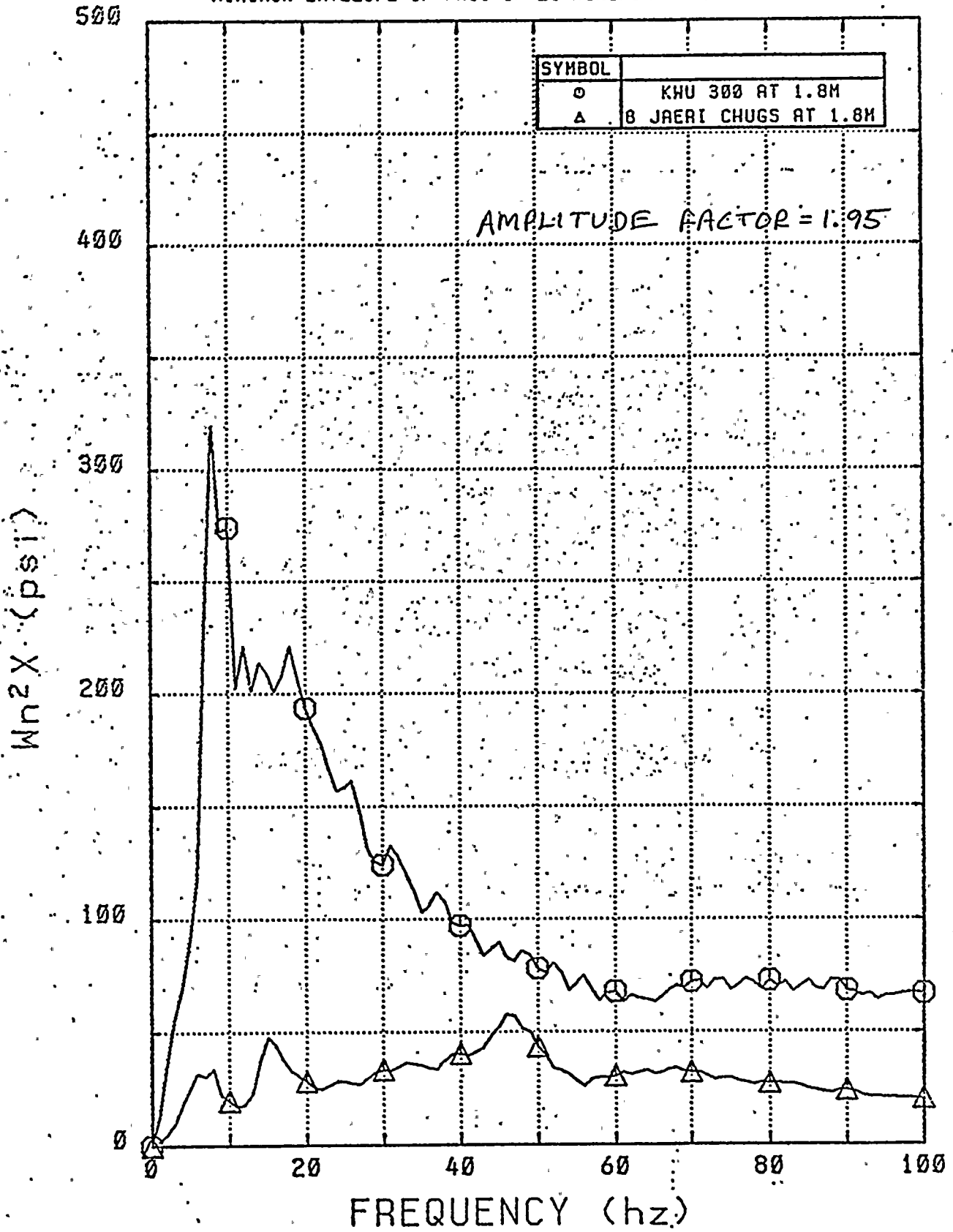


MINIMUM ENVELOPE OF PRS OF 20 MINIMUM VARIANCE TRIALS





MINIMUM ENVELOPE OF PRS OF 20 MINIMUM VARIANCE TRIALS



## CONCLUSIONS

- FOR AMPLITUDE FACTOR OF 1.3 AND 1.95 MINIMUM PRS ENVELOPE OF 20 MINIMUM VARIANCE TRIALS BOUNDS MAXIMUM JAERI PRS
- THIS IS DUE TO THE LARGE CONSERVATISM IN THE STRENGTH OF THE SOURCES SELECTED

100-100000



100-100000