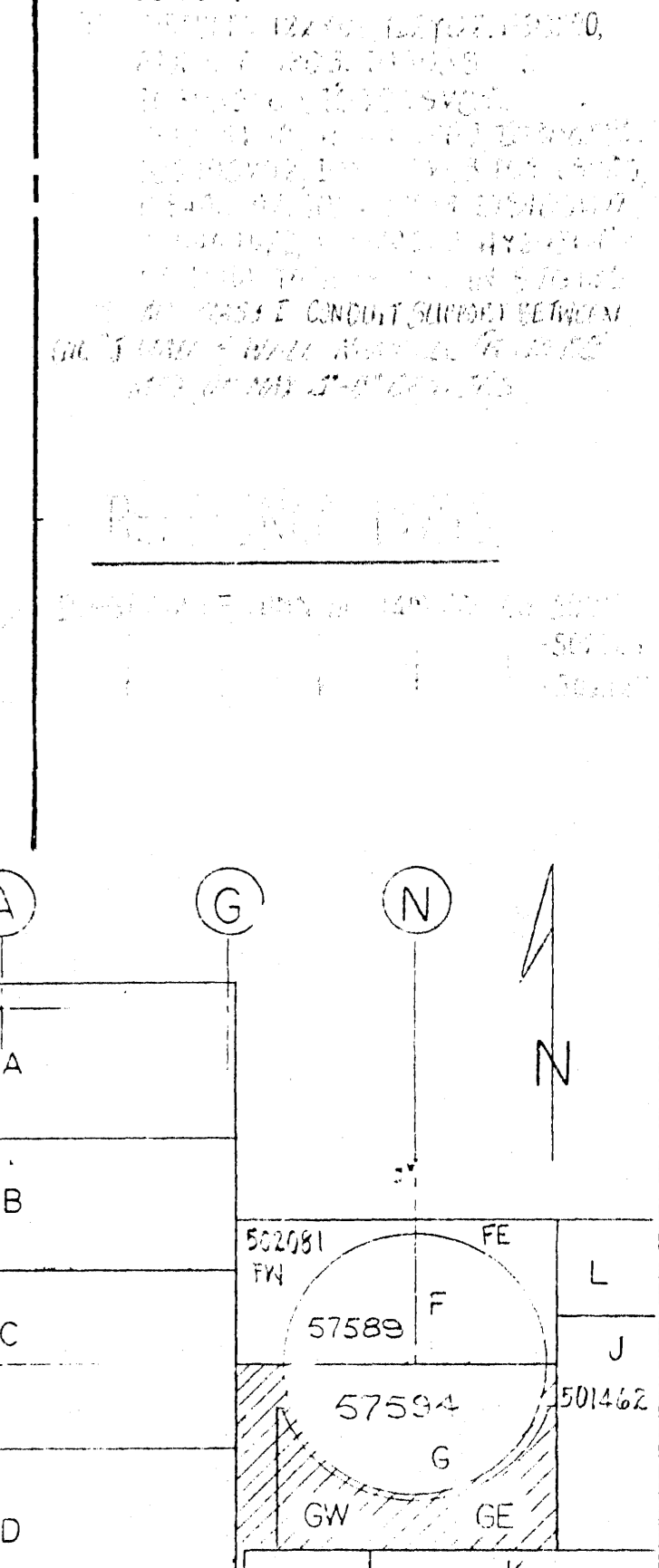
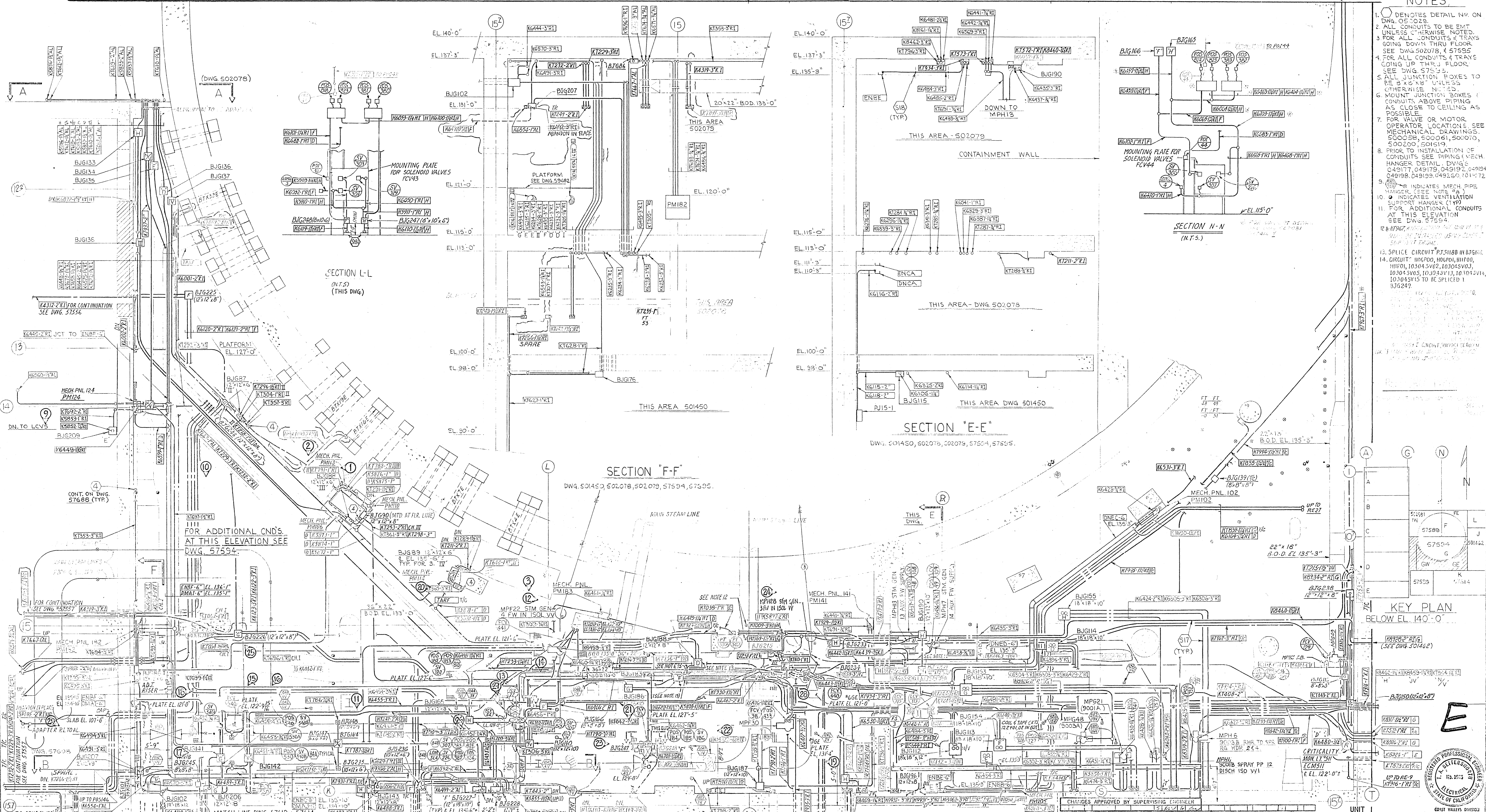


NOTES

1. DENOTES DETAIL NO. ON DWG. 05-0028.
2. ALL CONDUITS TO BE EMT UNLESS OTHERWISE NOTED.
3. FOR ALL CONDUITS & TRAYS GOING DOWN THRU FLOOR SEE DWG 502078, 57595.
4. FOR ALL CONDUITS & TRAYS GOING UP THRU FLOOR SEE DWG 57595.
5. ALL JUNCTION BOXES TO BE 3" x 6" x 8" UNLESS OTHERWISE NOTED.
6. MOUNT JUNCTION BOXES CONDUITS ABOVE PIPING AS CLOSE TO CEILING AS POSSIBLE.
7. FOR VALVE OR MOTOR OPERATOR LOCATIONS SEE MECHANICAL DRAWINGS. SCHEDULES: 500056, 500061, 500070, 500200, 501519.
8. PRIOR TO INSTALLATION OF CONDUITS SEE PIPING MECH HANGER DETAIL DWGS 049177, 049179, 049192, 049194, 049198, 049199, 049260, 101172.
9. (Symbol) INDICATES MECH PIPE HANGER. SEE NOTE #4.
10. (Symbol) INDICATES VENTILATION SUPPORT HANGER (TYP).
11. FOR ADDITIONAL CONDUITS AT THIS ELEVATION SEE DWG 57694.
12. (Symbol) INDICATES MECH PIPE HANGER. SEE NOTE #4.
13. SPLICE CIRCUIT P15188 IN B1G62.
14. CIRCUIT 106P00, 106P01, 106P02, 106P03, 106P04, 106P05, 106P06, 106P07, 106P08, 106P09, 106P10 TO BE SPECIFIED 106P242.



KEY PLAN BELOW EL. 140'-0"

NO.	DATE	DESCRIPTION	BY	CHK.	APPR.	NO.	DATE	DESCRIPTION	BY	CHK.	APPR.
1	11/15/90	ISSUED FOR CONSTRUCTION	GM	CH	APPR	1	11/15/90	ISSUED FOR CONSTRUCTION	GM	CH	APPR
2	11/15/90	REVISION 1	GM	CH	APPR	2	11/15/90	REVISION 1	GM	CH	APPR
3	11/15/90	REVISION 2	GM	CH	APPR	3	11/15/90	REVISION 2	GM	CH	APPR
4	11/15/90	REVISION 3	GM	CH	APPR	4	11/15/90	REVISION 3	GM	CH	APPR
5	11/15/90	REVISION 4	GM	CH	APPR	5	11/15/90	REVISION 4	GM	CH	APPR

DIABLO CANYON
DEPARTMENT OF ENGINEERING
PACIFIC GAS AND ELECTRIC COMPANY
SAN FRANCISCO, CALIFORNIA

CABLE TRAY AND CONDUIT LAYOUT
PLAN BELOW EL. 140'-0" AREAS GE & GW

APPROVED BY SUPERVISING ENGINEER
DATE 11/15/90

SCALE 1/8" = 1'-0"

502079

Regulatory Docket File
50-27572-3
CONTROL: 7393