

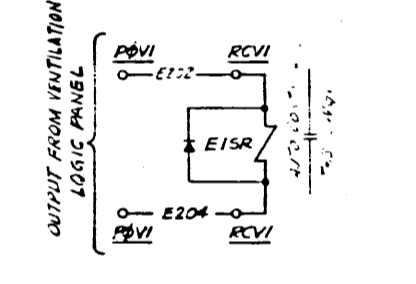
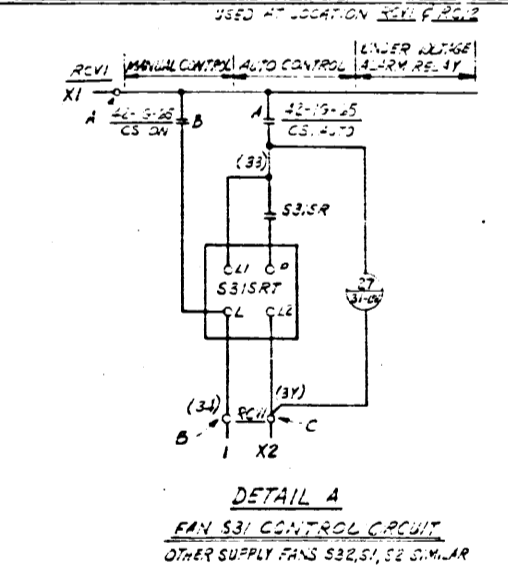
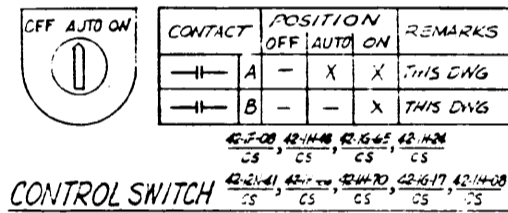
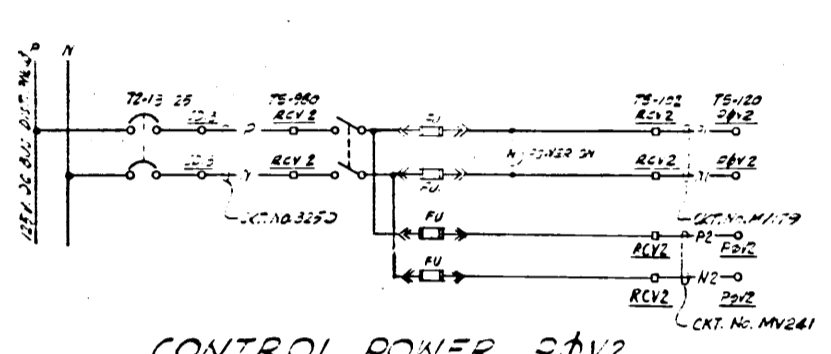
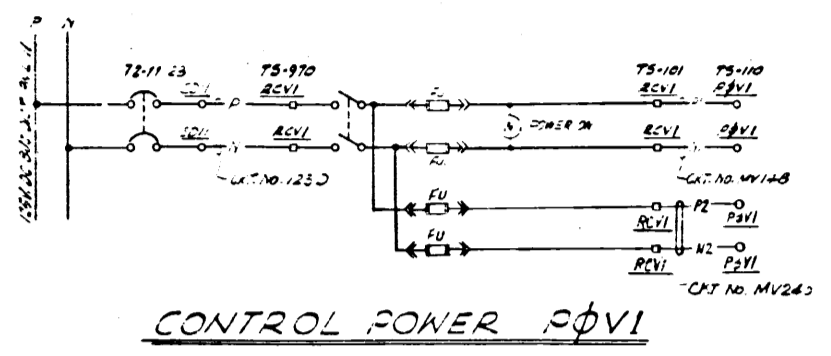
OVERALL EXHAUST FAN E-1 CIRCUIT N° F08POO  
SIMILAR CIRCUITS FOR FANS E-2, E-3, E-4, E-5, E-6, E-7 & E-8 EXCEPT AS SHOWN IN TABLE 1 DETAIL A

DESCRIPTION	N.P.	MOTOR LOC.	INT. NO.	STARTER	OVERLOAD	SOLENOID VALVE	LOGIC CONTROL	RELAY	MCC	STARTER OPT. NO.	OVERCURRENT	REMARKS
OVERALL EXHAUST FAN E-1	50	VEER	52-1F-08	F08POO	49-1F-08	49-1F-08	E1R	E1R	11-11-14	CY13320	A1440BDP	A1440BDP
OVERALL EXHAUST FAN E-2	150	WV48	52-1F-08	H08POO	49-1F-08	49-1F-08	E2R	E2R	11-11-14	CY13320	A1440BDP	A1440BDP
AUXILIARY BUILDING SUPPLY FAN S-1	10	MW26	52-1F-08	G08POO	49-1F-08	49-1F-08	E3R	E3R	11-11-14	CY13320	A1440BDP	A1440BDP
AUXILIARY BUILDING SUPPLY FAN S-2	60	MW26	52-1F-08	H08POO	49-1F-08	49-1F-08	E4R	E4R	11-11-14	CY13320	A1440BDP	A1440BDP
FUEL HANDLING BLDG. DUNE REMOVAL FAN E-4	75	MW26	52-1F-08	I08POO	49-1F-08	49-1F-08	E5R	E5R	11-11-14	CY13320	A1440BDP	A1440BDP
FUEL HANDLING BLDG. DUNE REMOVAL FAN E-5	75	MW26	52-1F-08	J08POO	49-1F-08	49-1F-08	E6R	E6R	11-11-14	CY13320	A1440BDP	A1440BDP
FUEL HANDLING BLDG. DUNE REMOVAL FAN E-6	75	MW26	52-1F-08	K08POO	49-1F-08	49-1F-08	E7R	E7R	11-11-14	CY13320	A1440BDP	A1440BDP
FUEL HANDLING BLDG. SUPPLY FAN S-1	25	MW26	52-1F-08	L08POO	49-1F-08	49-1F-08	E8R	E8R	11-11-14	CY13320	A1440BDP	A1440BDP
FUEL HANDLING BLDG. SUPPLY FAN S-2	25	MW26	52-1F-08	M08POO	49-1F-08	49-1F-08	E9R	E9R	11-11-14	CY13320	A1440BDP	A1440BDP

CIRCUIT SPLICED AT TERMINAL BOX FOR WIRE SIZE CHANGE

FAN	RELAY	SOLENOID VALVE	CONTROL	INLET VANE DAMPER	STARTER	OVERLOAD	LOGIC CONTROL	RELAY	MCC	STARTER OPT. NO.	OVERCURRENT	REMARKS
E-1	1	SV-93	52-1F-08	49-1F-08	E1R	E1R	E1R	E1R	11-11-14	CY13320	A1440BDP	A1440BDP
E-2	1	SV-94	52-1F-08	49-1F-08	E2R	E2R	E2R	E2R	11-11-14	CY13320	A1440BDP	A1440BDP
S-1	2	SV-105A	52-1F-08	49-1F-08	E3R	E3R	E3R	E3R	11-11-14	CY13320	A1440BDP	A1440BDP
S-2	2	SV-105B	52-1F-08	49-1F-08	E4R	E4R	E4R	E4R	11-11-14	CY13320	A1440BDP	A1440BDP
E-4	4	SV-107	52-1F-08	49-1F-08	E5R	E5R	E5R	E5R	11-11-14	CY13320	A1440BDP	A1440BDP
E-5	4	SV-108	52-1F-08	49-1F-08	E6R	E6R	E6R	E6R	11-11-14	CY13320	A1440BDP	A1440BDP
E-6	4	SV-109	52-1F-08	49-1F-08	E7R	E7R	E7R	E7R	11-11-14	CY13320	A1440BDP	A1440BDP
S-1	3	SV-115	52-1F-08	49-1F-08	E8R	E8R	E8R	E8R	11-11-14	CY13320	A1440BDP	A1440BDP
S-2	3	SV-116	52-1F-08	49-1F-08	E9R	E9R	E9R	E9R	11-11-14	CY13320	A1440BDP	A1440BDP

\* TERMINAL STRIPS LOCATED ON RCVI OR RCVE DWG NO. 445610



DEVICE NO.	FUNCTION	RATING	MFG.	TYPE	CAT. NO.	REMARKS
27-11-LV, 12, 14, 15, 16, 21, 22, 31, 4, 32	UNDervOLTAGE ALARM RELAY					
42-1F-08, 06, 42-1F-17, 05, 42-1F-08, 24, 49, 70, 42-1F-41	480V MOTOR STARTER					
42-1F-08, 1H, 43	STARTER AUX CONTROL RELAY					PART OF MOTOR STARTER
49-1F-08, 06, 49-1F-17, 05, 49-1F-08, 24, 49, 70, 49-1F-41	480V MOTOR STARTER OVERLOAD RELAY					PART OF MOTOR STARTER
49-1F-08, 06, 49-1F-17, 05, 49-1F-08, 24, 49, 70, 49-1F-41	480V MOTOR STARTER OVERLOAD AUX RELAY					ALARM ONLY
52-1F-08, 06, 52-1F-17, 05, 52-1F-08, 24, 49, 70, 52-1F-41	480V AIR CIRCUIT BREAKER					
SV-93, 94, 105A, 105B, 107, 108, 109, 115, 116	SOLENOID VALVE INLET VANE DAMPER					REFERENCED TO THE INLET VANE DAMPER
E1SR, E2SR, E3SR, E4SR, E5SR, E6SR, E7SR, E8SR, E9SR	LOGIC CONTROL STARTING RELAY					(1)

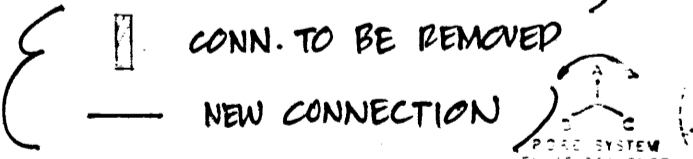
NOTE: 1. FIELD TO CONVERT CONTACT 11-12 OF 42-1F-08 & 49-1F-08 TO N.C.

EQUIPMENT LOCATION NUMBERS

- SPFE 480V MOTOR CONTROL CENTER BUS SECTION 1F
- MPEB OVERALL EXHAUST FAN E-1
- RCVI VENTILATION RELAY CABINET 1
- P0V1 VENTILATION CONTROL PANEL 1
- XSV93 VANE DAMPER FAN E-1

REFERENCE DRAWINGS

- SINGLE LINE METER & RELAY DIAGRAM 480V SYSTEM BUS SECTION 1F DWG NO. 437516
- SINGLE LINE METER & RELAY DIAGRAM 480V SYSTEM BUS SECTION 1G 437542
- SINGLE LINE METER & RELAY DIAGRAM 480V SYSTEM BUS SECTION 1H 437539
- SINGLE LINE METER & RELAY DIAGRAM 480V SYSTEM BUS SECTION 12M & 12N 437553
- DESCRIPTION OF ELECT. SCHEMATIC DIAG., SYMBOLS & CXT. DESIGNATIONS C500C3
- EQUIPMENT LOCATION NUMBER LIST 101900
- CONTROL DIAGRAM AUX. & FUEL HANDLING BLDG. VENTILATION SYSTEM 444644
- INLET VANE DAMPER RELAY DIAGRAM 125-000001 457-140
- STARTER RELAY DIAGRAM 125-000002 501-121
- STARTER RELAY DIAGRAM 125-000003 502-114



REVISION	DATE	DESCRIPTION	BY	CHK	APPD	DATE	DESCRIPTION	BY	CHK	APPD
1		ISSUED FOR CONSTRUCTION								
2		REVISION								



NO.	DATE	DESCRIPTION	BY	CHK	APPD	DATE	DESCRIPTION	BY	CHK	APPD
1		ISSUED FOR CONSTRUCTION								
2		REVISION								