

CATEGORY 1

REGULATORY INFORMATION DISTRIBUTION SYSTEM (RIDS)

ACCESSION NBR: 9709030176 DOC. DATE: 97/08/22 NOTARIZED: NO DOCKET #
FACIL: 50-275 Diablo Canyon Nuclear Power Plant, Unit 1, Pacific Gas 05000275
AUTH. NAME AUTHOR AFFILIATION
POWERS, R.P. Pacific Gas & Electric Co. *See*
RECIP. NAME RECIPIENT AFFILIATION *Reports*
 Document Control Branch (Document Control Desk)

SUBJECT: Forwards ISI rept for Unit 1 eighth refueling outage IAW
ASME Section XI, paragraph IWA 6230.

DISTRIBUTION CODE: A047D COPIES RECEIVED: LTR 1 ENCL 1 SIZE: 2+65
TITLE: OR Submittal: Inservice/Testing/Relief from ASME Code - GL-89-04

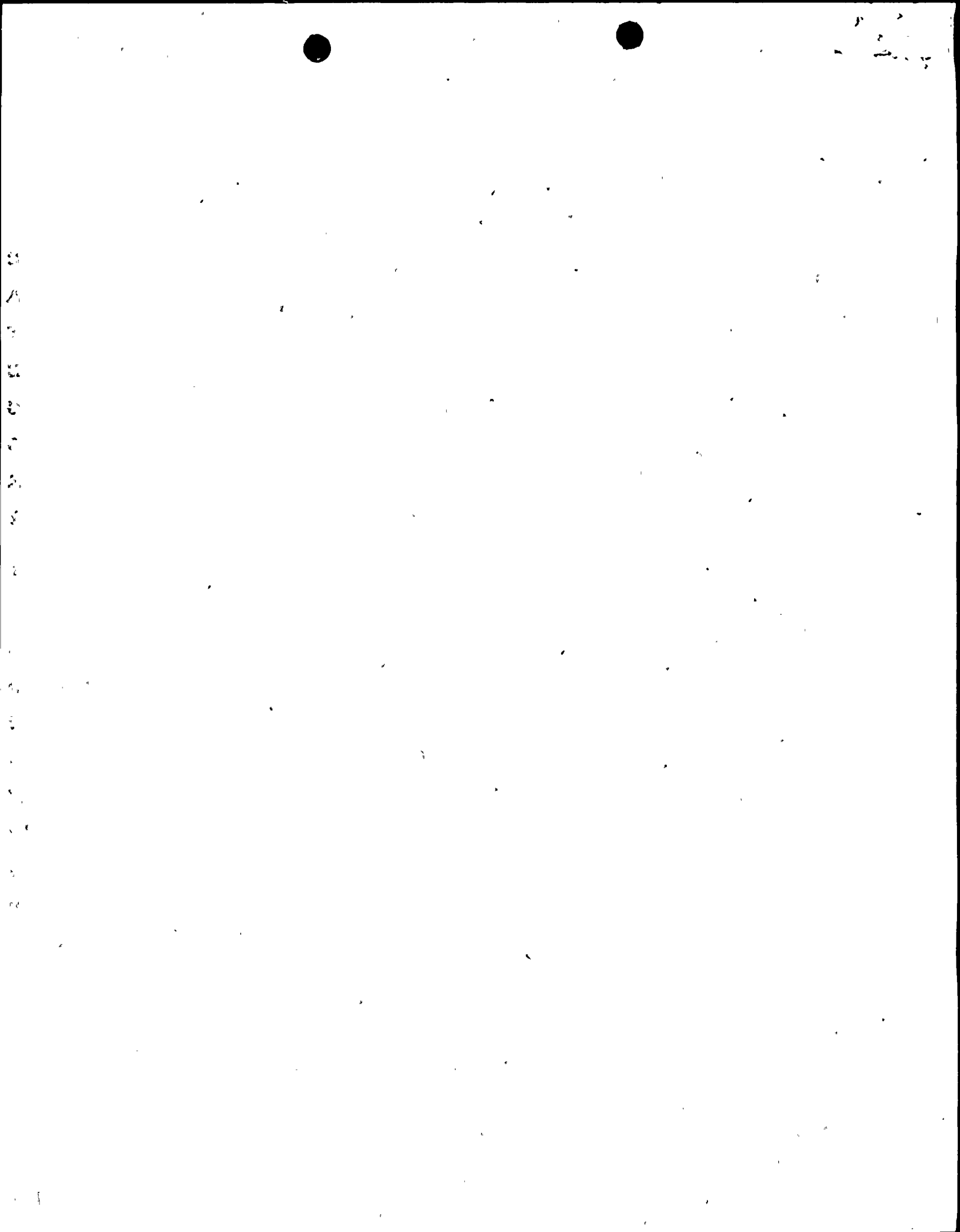
NOTES:

	RECIPIENT		COPIES		RECIPIENT		COPIES	
	ID CODE/NAME		LTR	ENCL	ID CODE/NAME	LTR	ENCL	
	PD4-2 LA		1	1	PD4-2 PD	1	1	
	BLOOM, S		1	1				
INTERNAL:	ACRS		1	1	AEOD/SPD/RAB	1	1	
	<u>FILE CENTER 01</u>		1	1	NRR/DE/EMEB	1	1	
	NUDOCS-ABSTRACT		1	1	OGC/HDS3	1	0	
	RES/DET/EIB		1	1	RES/DET/EMMEB	1	1	
EXTERNAL:	LITCO ANDERSON		1	1	NOAC	1	1	
	NRC PDR		1	1				

C
A
T
E
G
O
R
Y
1
D
O
C
U
M
E
N
T

NOTE TO ALL "RIDS" RECIPIENTS:
PLEASE HELP US TO REDUCE WASTE. TO HAVE YOUR NAME OR ORGANIZATION REMOVED FROM DISTRIBUTION LISTS
OR REDUCE THE NUMBER OF COPIES RECEIVED BY YOU OR YOUR ORGANIZATION, CONTACT THE DOCUMENT CONTROL
DESK (DCD) ON EXTENSION 415-2083

TOTAL NUMBER OF COPIES REQUIRED: LTR 14 ENCL 13



Pacific Gas and Electric Company

Diablo Canyon Power Plant
P.O. Box 56
Avila Beach, CA 93424
805/545-6000

Robert P. Powers
Vice President-Diablo Canyon
Operations and Plant Manager

August 22, 1997



PG&E Letter DCL-97-148

U.S. Nuclear Regulatory Commission
ATTN: Document Control Desk
Washington, DC 20555

Docket No. 50-275, OL-DPR-80
Diablo Canyon Unit 1
Inservice Inspection Report for Unit 1 Eighth Refueling Outage

Dear Commissioners and Staff:

In accordance with ASME Section XI, paragraph IWA 6230, enclosed is the Diablo Canyon Inservice Inspection Report. This report provides the results of the Unit 1 eighth refueling outage inservice inspections of Class 1 and 2 components and supports.

Sincerely,

A handwritten signature in cursive script, appearing to read 'R. P. Powers'. The signature is written in dark ink on a white background.

Robert P. Powers

cc: Donald B. Allen
Steven D. Bloom
Ellis W. Merschoff
Kenneth E. Perkins (w/o enc.)
Diablo Distribution (w/o enc.)

Enclosure

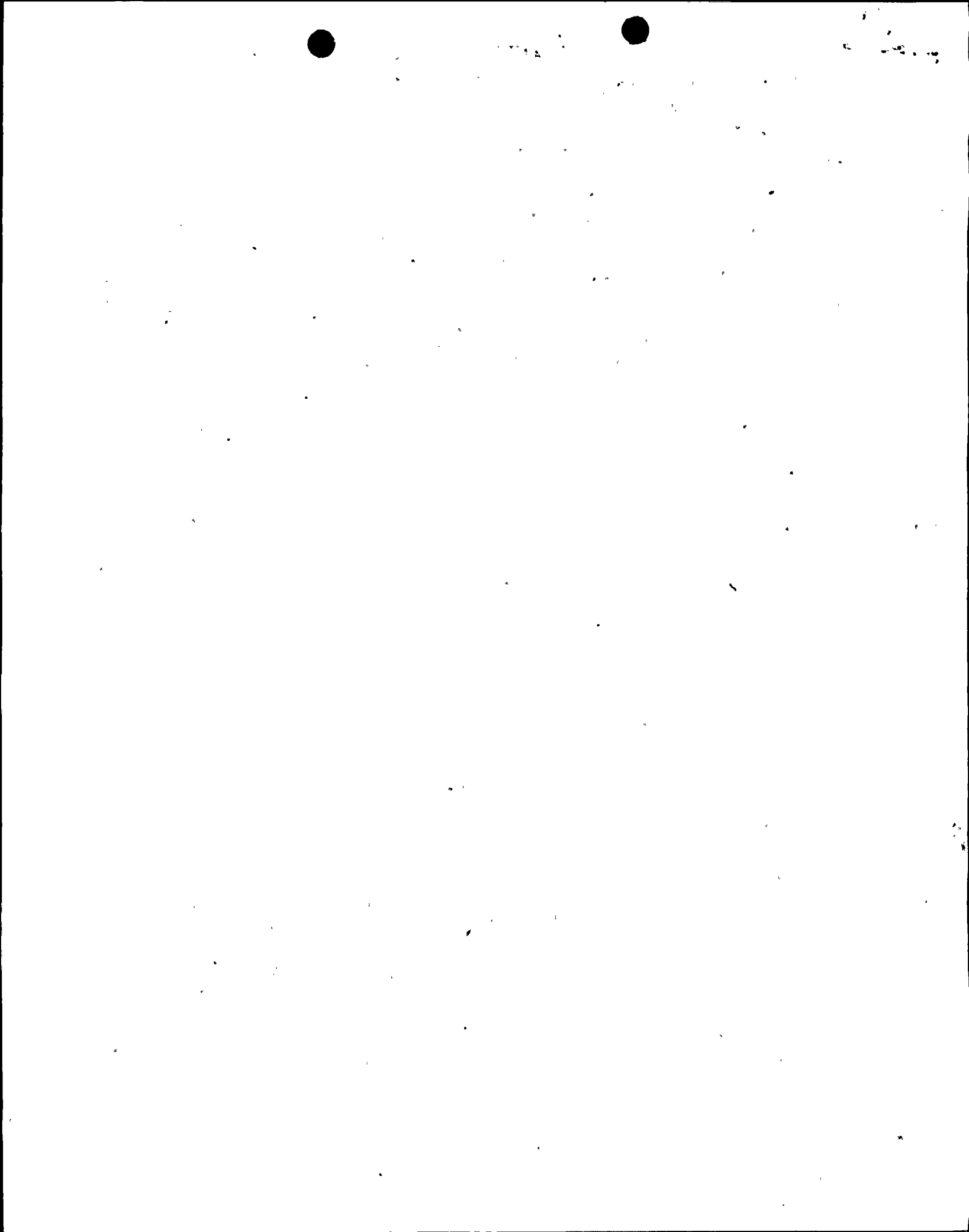
DDM/469

11
ADY7

030038



9709030176 970822
PDR ADOCK 05000275
Q PDR



**INSERVICE INSPECTION REPORT FOR
THE UNIT 1 EIGHTH REFUELING OUTAGE**

9709030176



TABLE OF CONTENTS

<u>SECTION</u>	<u>TITLE</u>	
A.	Introduction	
B.	ASME Code Data Report Form NIS-1 (Basis of Summary)	
	1. Class 1	
	2. Class 2	
C.	Class 1 Components	
	1. Vessels	TABLE
	a. Reactor Vessel	1.1
	b. Pressurizer	1.2
	c. Steam Generators	1.3
	2. Piping	1.4
	3. Supports	1.5
D.	Class 2 Components	
	1. Vessels	2.1
	2. Piping	2.2
	3. Supports	2.3
E.	System Pressure Tests	5.2
F.	Preservice Inspection Items	
G.	Repairs and Replacements	
	1. ASME Code Data Report Form NIS-2 (Indexed by System)	
H.	Augmented Examinations	



SECTION A
INTRODUCTION



SECTION A

INTRODUCTION

Inservice inspection (ISI) of scheduled ASME Section XI Class 1 and 2 components and their supports at Pacific Gas and Electric Company's Diablo Canyon Power Plant (DCPP) Unit 1 was completed during the eighth refueling outage from April through June, 1997. The DCPP Unit 1 eighth refueling outage (1R8) was the first outage in the first period within the second 10-year ISI interval.

This report is submitted as required by ASME Section XI, paragraph IWA-6220, and is organized in several sections. An introduction is provided in section A. Section B contains the completed ASME Code Data Report Form NIS-1 for Class 1 and 2 components. Sections C and D detail the Class 1 and 2 examinations performed, date of examination (for group items or for more than one type of examination performed, the date provided is the most recent examination date), any unusual conditions noted, corrective actions if required, and explanatory remarks.

System pressure tests conducted during 1R8 are reported in Section E.

Preservice inspections were performed on certain components, as required after repairs or replacements. These items are detailed in section F.

Section G of this report, Repairs and Replacements, contains the completed ASME Code Data Report Form NIS-2 for those 1R8 work packages closed prior to July 2, 1997 and for any pre-1R8 work packages closed after December 28, 1995. NIS-2 reports for 1R8 work packages which are closed after July 2, 1997 will be included in the next outage report. Corrective actions and work order package documentation are on file at DCPP and are referenced by work order number in the NIS-2 reports.

Augmented Examinations, i.e. flywheels, are reported in Section H.

12 Welds with limited accessibility were encountered during 1R8 examinations. These welds will be incorporated in relief requests NDE-3, NDE-5, NDE-13.1R8 and NDE-21.1R8 as a result of the eighth refueling outage examinations. Therefore, NRC approval is required for PG&E to credit limited examinations of the following welds: 1-446A, 1-446B, 6-446A, WIB-RC-1-11.5 A&B, WIB-RC-2-13.5 A&B, WIB-334, WIB-64, WIB-433A, WIC-189A, and WIC-48A. To ensure compliance with the periodic inspection schedule provided in ASME Section XI Table IWB-2412-1, NRC approval of these welds for inclusion into the relief request is required prior to the end of the second 10 year interval.

