

ACCELERATED DISTRIBUTION DEMONSTRATION SYSTEM

REGULATORY INFORMATION DISTRIBUTION SYSTEM (RIDS)

ACCESSION NBR: 9008300189 DOC.DATE: 90/08/23 NOTARIZED: NO DOCKET #
 FACIL: 50-275 Diablo Canyon Nuclear Power Plant, Unit 1, Pacific Ga 05000275
 50-323 Diablo Canyon Nuclear Power Plant, Unit 2, Pacific Ga 05000323
 AUTH.NAME AUTHOR AFFILIATION
 SHIFFER, J.D. Pacific Gas & Electric Co.
 RECIPIENT AFFILIATION
 Document Control Branch (Document Control Desk)

SUBJECT: Forwards, "Fitness for Duty Performance Data for Jan-June 1990."

DISTRIBUTION CODE: A001D COPIES RECEIVED: LTR 1 ENCL 1 SIZE: 6
 TITLE: OR Submittal: General Distribution

NOTES:

	RECIPIENT		COPIES			RECIPIENT		COPIES	
	ID CODE/NAME		LTR	ENCL		ID CODE/NAME		LTR	ENCL
	PD5 LA		1	1		PD5 PD		1	1
	ROOD, H		2	2					
INTERNAL:	ACRS		6	6		NRR/DET/ECMB 9H		1	1
	NRR/DOEA/OTSB11		1	1		NRR/DST 8E2		1	1
	NRR/DST/SELB 8D		1	1		NRR/DST/SICB 7E		1	1
	NRR/DST/SRXB 8E		1	1		NUDOCS-ABSTRACT		1	1
	OC/LEMB		1	0		OGC/HDS2		1	0
	<u>REG FILE</u> 01		1	1		RES/DSIR/EIB		1	1
EXTERNAL:	LPDR		1	1		NRC PDR		1	1
	NSIC		1	1					

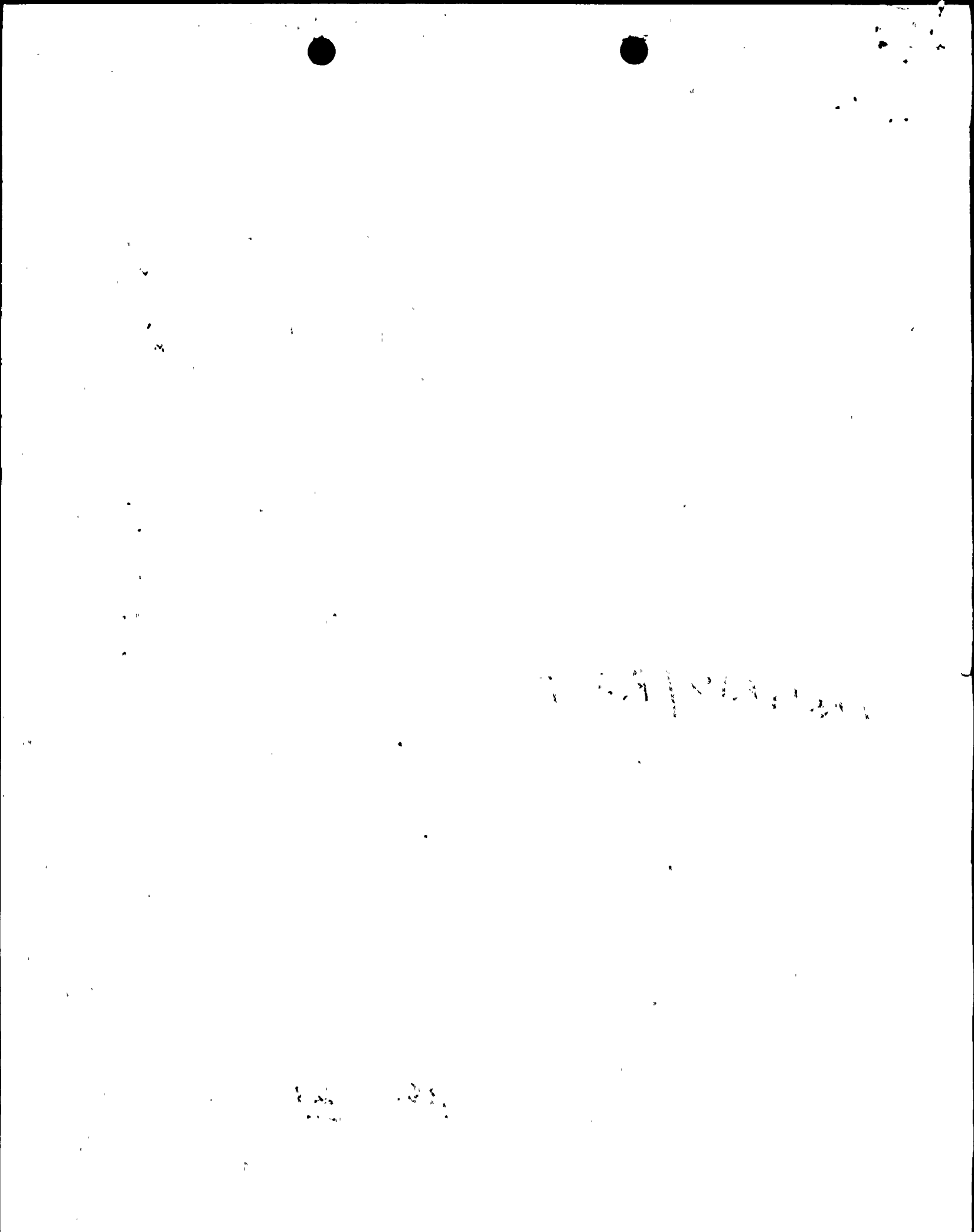
NRR/DRIS/RSGB

NOTE TO ALL "RIDS" RECIPIENTS:

PLEASE HELP US TO REDUCE WASTE! CONTACT THE DOCUMENT CONTROL DESK, ROOM P1-37 (EXT. 20079) TO ELIMINATE YOUR NAME FROM DISTRIBUTION LISTS FOR DOCUMENTS YOU DON'T NEED!

TOTAL NUMBER OF COPIES REQUIRED: LTR 25 ENCL 23
~~24~~ ~~22~~

R
I
D
S
/
A
D
D
S



Pacific Gas and Electric Company

77 Beale Street
San Francisco, CA 94106
415/973-4684
TWX 910-372-6587

James D. Shiffer
Senior Vice President and
General Manager
Nuclear Power Generation

August 23, 1990

PG&E Letter No. DCL-90-215



U.S. Nuclear Regulatory Commission
ATTN: Document Control Desk
Washington, D.C. 20555

Re: Docket No. 50-275, OL-DPR-80
Docket No. 50-323, OL-DPR-82
Diablo Canyon Units 1 and 2
Semiannual Fitness-for-Duty Performance Report
January - June 1990

Gentlemen:

Pursuant to 10 CFR 26.71(d), PG&E is hereby submitting the enclosed Fitness-for-Duty Performance Report for the period January through June 1990. The performance data have been compiled on the standard form developed by NUMARC and approved by the NRC for use by licensees.

The performance data have been analyzed and management actions have been taken to enhance the Fitness-for-Duty Program. For example, PG&E is providing contract employees with employee assistance counselor services. These services provide individuals with guidance and support after a positive test result. They also assist in identification of and intervention for substance abuse/addiction-related problems that may have an impact on an individual's ability to perform work in a safe manner.

PG&E has also implemented a Fitness-for-Duty Management/Labor Audit and Review Committee. The charter of this committee is to continually look for ways to improve the effectiveness of the Fitness-for-Duty Program by reviewing procedural issues to ensure that the program is operated in the most efficient and consistent manner possible.

In addition, PG&E maintains an open liaison with local law enforcement agencies, including the San Luis Obispo Drug Task Force, and communicates with local drug and alcohol treatment facilities to monitor drugs of current use/abuse in geographical proximity to Diablo Canyon.

To date, PG&E has submitted two reports pursuant to 10 CFR 26, Appendix A, subpart A.2.8(e)(4). These reports were submitted in PG&E Letter Nos. DCL-90-095, dated April 6, 1990, and DCL-90-125, dated May 11, 1990.

9008300189 900823
PDR ADOCK 05000275
R PDC

Handwritten:
Aool
Add: NRR/DRIS/R50-B
1/1
1 1



August 23, 1990

If you have any questions regarding the Fitness-for-Duty performance data, please contact William D. Drake, PG&E Fitness-for-Duty Supervisor, at (805) 595-4772.

Kindly acknowledge receipt of this material on the enclosed copy of this letter and return it in the enclosed addressed envelope.

Sincerely,

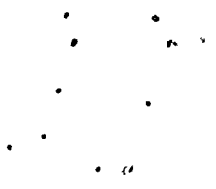


J. D. Shiffer

cc: W. D. Drake
R. E. Enkebo11 (NUMARC)
R. F. Locke
J. B. Martin
R. J. McDevitt
CCC (w/o enc.)
RMS

Enclosure

3286S/0085K/KAH/2200



ENCLOSURE

FITNESS-FOR-DUTY PERFORMANCE DATA
JANUARY - JUNE 1990



Small, illegible handwritten marks or characters in the top right corner.

2

22

20

Small, illegible handwritten marks or characters on the left side.

Small, illegible handwritten marks or characters in the lower middle section.

Small, illegible handwritten marks or characters in the lower left section.

FITNESS FOR DUTY PROGRAM

**Performance Data
Personnel Subject to 10CFR 26**

Pacific Gas and Electric Company
 COMPANY
Diablo Canyon Nuclear Power Plant
 LOCATION
William D. Drake
 CONTACT NAME

June 30, 1990
 6 MONTHS ENDING
(805) 595-4772
 PHONE (INCLUDE AREA CODE)

CUTOFFS: SCREEN/CONFIRMATION (ng/ml) APPENDIX A TO 10CFR 26

MARIJUANA * 20/10 AMPHETAMINES * 300 /250 Barbiturates* 300 / 250
 COCAINE * 300/150 PHENCYCLIDINE * 25 / 25' Benzodiazepines* 300/ 250
 OPIATES * 300/300 ALCOHOL (% BAC) .04 Methaqualone* 300/ 100

*Pre-employment

TESTING RESULTS	LICENSEE EMPLOYEES				LONG-TERM CONTRACTOR PERSONNEL		SHORT-TERM CONTRACTOR PERSONNEL	
	# TESTED	# POSITIVE	# REFERRED TO EAP	# ACCESS RESTORED	# TESTED	# POSITIVE	# TESTED	# POSITIVE
AVERAGE NUMBER WITH UNESCORTED ACCESS 3519								
PRE-EMPLOYMENT	23	0			136	0	1603	41
PRE-BADGING	129	0			0	0	0	0
PERIODIC	0	0			0	0	0	0
FOR CAUSE	1	1			0	0	2	2
POST ACCIDENT	0	0			0	0	0	0
RANDOM	723	3	3	2	497	6	316	3
FOLLOW-UP	3	0	0	0	3	0	0	0
OTHER								
TOTAL	879	4	4	2	639	6	1921	46



10/10/10



10/10/10

10/10/10

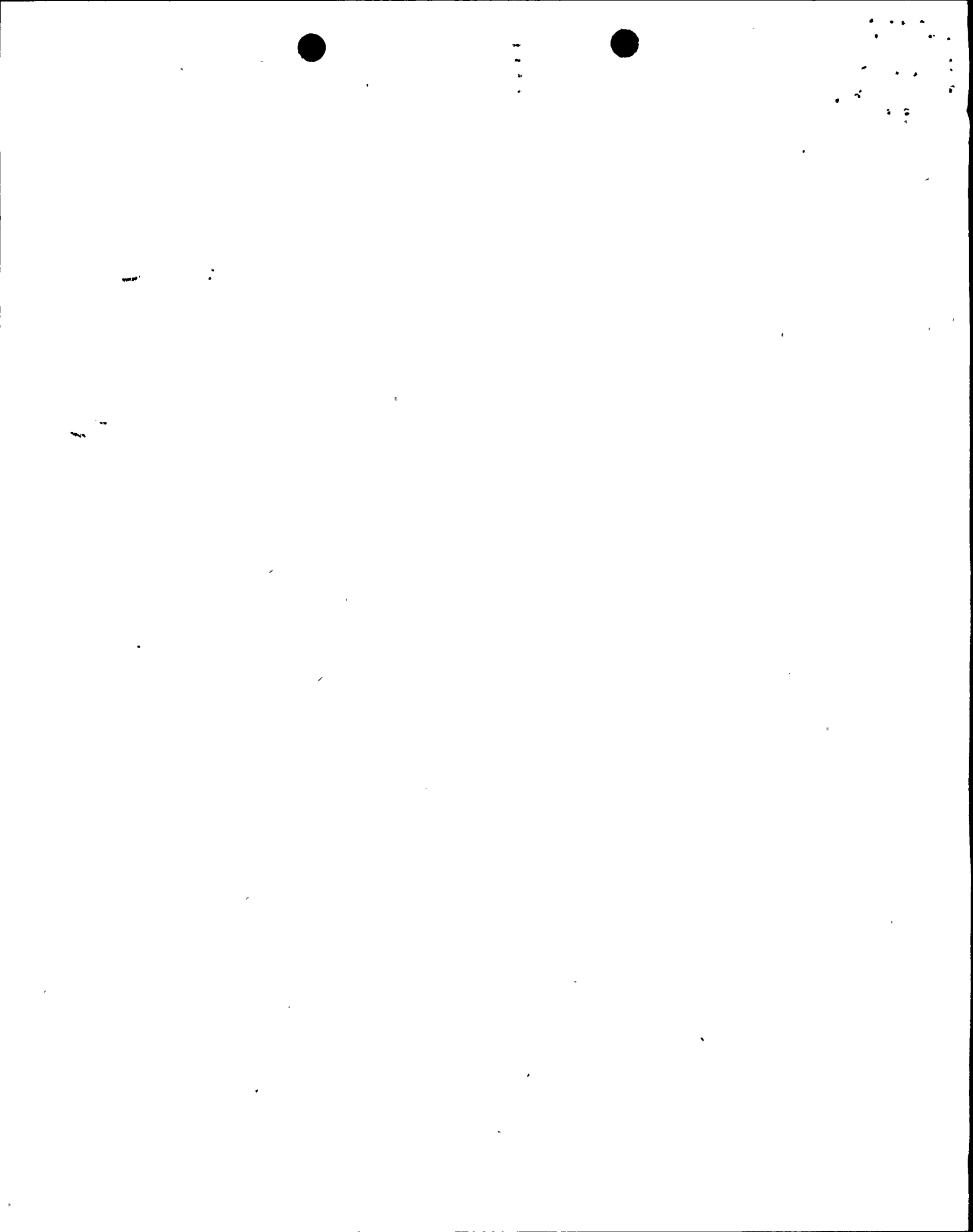
10/10/10

RANDOM TESTING PROGRAM RESULTS

INDIVIDUALS TESTED	1989		1990		1991		1992		1993		
# POSITIVE			12								
# TESTED			1536								
% POSITIVE			0.78								
GRAPH OF % POSITIVE	5										
	4										
	3										
	2										
	1										

CONFIRMED POSITIVE TESTS FOR SPECIFIC SUBSTANCES

MARIJUANA			5							
COCAINE			5							
OPIATES			0							
AMPHETAMINES			1							
PHENCYCLIDINE			0							
ALCOHOL			1							



RANDOM TESTING PROGRAM RESULTS (PRE-EMPLOYMENT)

INDIVIDUALS TESTED	1989		1990		1991		1992		1993		
# POSITIVE			41								
# TESTED			1762								
% POSITIVE			2.3								
GRAPH OF % POSITIVE											

CONFIRMED POSITIVE TESTS FOR SPECIFIC SUBSTANCES

MARIJUANA			34							
COCAINE			2							
OPIATES			0							
AMPHETAMINES			1							
PHENCYCLIDINE			0							
ALCOHOL			0							
Marijuana/Cocaine			4							

