

ENCLOSURE 1
CORRECTED PAGES
FOR
SEMIANNUAL
RADIOACTIVE EFFLUENT RELEASE REPORT
SECOND HALF 1989

3302S/0085K

9008300165 900823
PDR ADOCK 05000275
R PDC

10
11
12
13
14
15
16
17
18
19
20
21
22
23
24
25
26
27
28
29
30
31
32
33
34
35
36
37
38
39
40
41
42
43
44
45
46
47
48
49
50
51
52
53
54
55
56
57
58
59
60
61
62
63
64
65
66
67
68
69
70
71
72
73
74
75
76
77
78
79
80
81
82
83
84
85
86
87
88
89
90
91
92
93
94
95
96
97
98
99
100

DIABLO CANYON NUCLEAR POWER PLANT
SEMIANNUAL RADIOACTIVE EFFLUENT RELEASE REPORT 1989

TABLE 4
LIQUID EFFLUENTS - SUMMATION OF ALL RELEASES

	<u>Unit</u>	<u>Third Quarter</u>	<u>Fourth Quarter</u>	<u>Est Total Error, %</u>
A. Fission and activation products				
1. Total release (not including tritium, gases, alpha)	Ci	1.74 E-1	1.14 E+0	2.1 E+1
2. Average diluted concentration during period	μCi/ml	1.02 E-9	6.62 E-9	
3. Percent of applicable limit ¹	%	2.76 E-2	1.22 E-1	
B. Tritium				
1. Total release	Ci	2.80 E+2	3.05 E+2	1.3 E+1
2. Average diluted concentration during period	μCi/ml	1.64 E-6	1.78 E-6	
3. Percent of applicable limit ¹	%	5.46 E-2	5.93 E-2	
C. Dissolved and entrained gases				
1. Total release	Ci	5.19 E-2	3.45 E-2	2.1 E+1
2. Average diluted concentration during period	μCi/ml	3.03 E-10	2.01 E-10	
3. Percent of applicable limit ¹	%	1.52 E-4	1.01 E-4	
D. Gross alpha radioactivity				
1. Total release	Ci	MDA	MDA	6.0 E+1

¹ Technical Specification 3.11.1.1 Limit



2

1950

1951

1952

1953

1954

1955

1956

1957

1958

1959

1960

1961

1962

1963

1964

1965

1966

DIABLO CANYON POWER PLANT
SEMIANNUAL RADIOACTIVE EFFLUENT RELEASE REPORT 1989

TABLE 5
LIQUID EFFLUENTS

<u>Nuclides Released</u>	<u>Unit</u>	<u>Third Quarter</u>		<u>Fourth Quarter</u>	
		<u>Continuous Mode</u>	<u>Batch Mode</u>	<u>Continuous Mode</u>	<u>Batch Mode</u>
antimony-122	Ci	MDA	MDA	MDA	1.44 E-4
antimony-124	Ci	MDA	4.96 E-5	MDA	1.20 E-2
antimony-125	Ci	MDA	1.69 E-2	MDA	9.36 E-2
beryllium-7	Ci	MDA	7.91 E-6	MDA	1.07 E-3
bromine-82	Ci	MDA	1.12 E-4	MDA	MDA
cerium-141	Ci	MDA	1.71 E-5	MDA	9.06 E-7
cerium-144	Ci	MDA	MDA	MDA	7.21 E-4
cesium-134	Ci	MDA	1.92 E-2	MDA	2.39 E-2
cesium-136	Ci	MDA	2.94 E-7	MDA	4.97 E-4
cesium-137	Ci	MDA	2.73 E-2	MDA	2.48 E-2
chromium-51	Ci	MDA	3.60 E-4	MDA	7.00 E-2
cobalt-57	Ci	MDA	5.82 E-5	MDA	1.72 E-3
cobalt-58	Ci	MDA	6.05 E-3	MDA	4.62 E-1
cobalt-60	Ci	MDA	3.09 E-2	MDA	1.85 E-1
iron-55	Ci	MDA	5.75 E-2	MDA	1.54 E-1
iron-59	Ci	MDA	5.96 E-5	MDA	8.94 E-3
lanthanum-140 ¹	Ci	MDA	5.72 E-5	MDA	1.00 E-4
manganese-54	Ci	MDA	1.96 E-3	MDA	1.63 E-2
manganese-56	Ci	MDA	6.40 E-9	MDA	MDA

Note:

¹ Includes daughters

3302S/0085K



Small, faint text or markings near the top center.

Vertical text or markings on the left side.

Vertical text or markings on the left side.

Vertical text or markings on the left side.

Vertical text or markings on the left side.

Vertical text or markings on the left side.

Vertical text or markings on the left side.

Vertical text or markings on the left side.

DIABLO CANYON POWER PLANT
SEMIANNUAL RADIOACTIVE EFFLUENT RELEASE REPORT 1989

TABLE 5 (CONTINUED)

LIQUID EFFLUENTS

<u>Nuclides Released</u>	<u>Unit</u>	<u>Third Quarter</u>		<u>Fourth Quarter</u>	
		<u>Continuous Mode</u>	<u>Batch Mode</u>	<u>Continuous Mode</u>	<u>Batch Mode</u>
iodine-133	Ci	MDA	4.34 E-4	MDA	2.53 E-3
iodine-134	Ci	MDA	1.11 E-9	MDA	9.45 E-13
iodine-135	Ci	MDA	1.49 E-5	MDA	2.38 E-4
TOTAL FOR PERIOD	Ci	MDA	1.74 E-1	MDA	1.14 E+0

DISSOLVED AND ENTRAINED GASES

xenon-133	Ci	MDA	4.92 E-2	MDA	3.39 E-2
xenon-133m	Ci	MDA	2.61 E-4	MDA	2.34 E-5
xenon-135	Ci	MDA	3.13 E-4	MDA	5.63 E-4
krypton-85	Ci	MDA	2.04 E-3	MDA	MDA
TOTAL FOR PERIOD	Ci	MDA	5.18 E-2	MDA	3.45 E-2



[Faint, illegible text and markings covering the majority of the page, possibly bleed-through from the reverse side.]

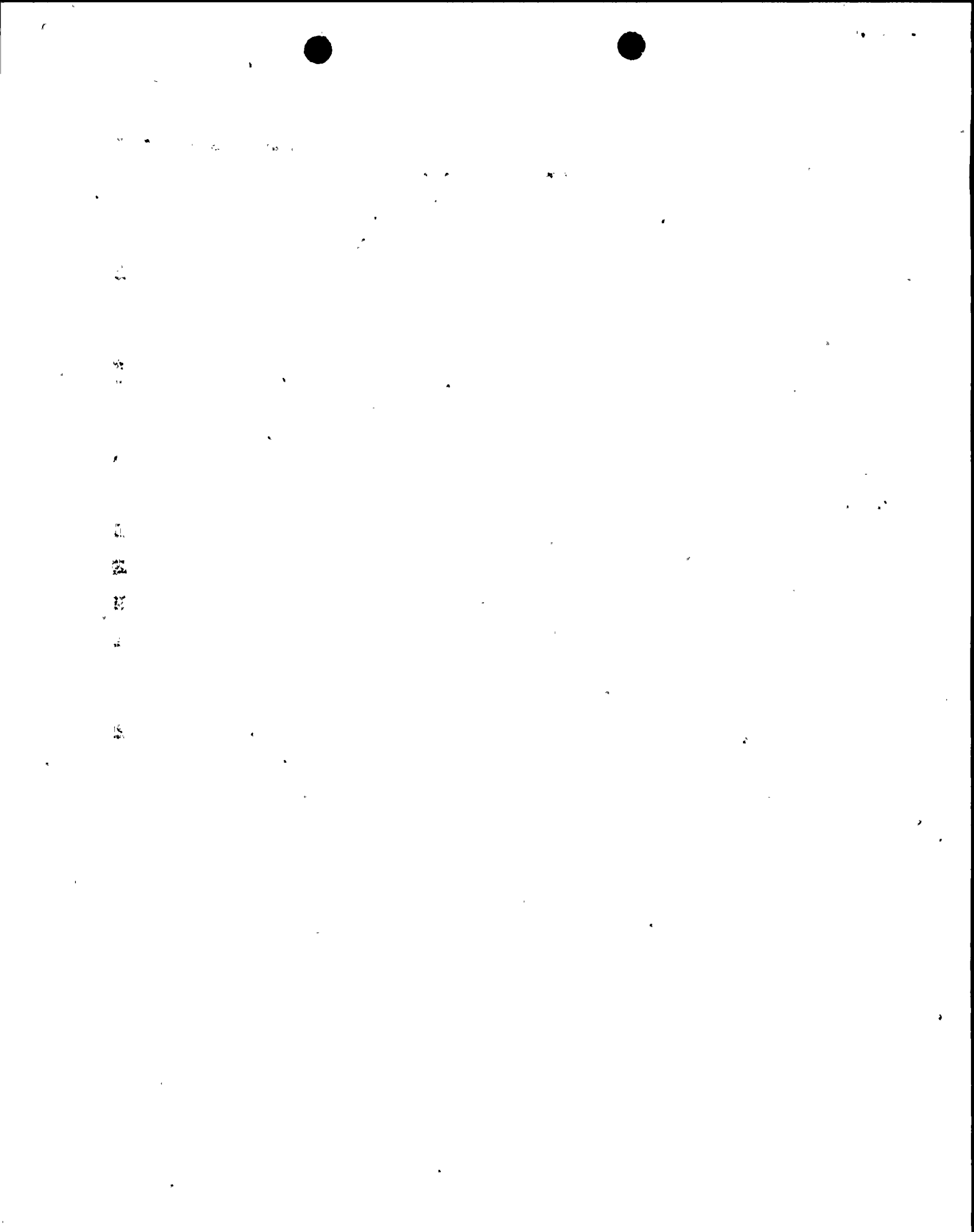
DIABLO CANYON POWER PLANT
SEMIANNUAL RADIOACTIVE EFFLUENT RELEASE REPORT 1989

TABLE 7

RADIATION DOSE DUE TO THE RELEASE OF RADIOACTIVE LIQUID EFFLUENTS

millirem

<u>ORGAN</u>	<u>First Quarter</u>	<u>Second Quarter</u>	<u>Third Quarter</u>	<u>Fourth Quarter</u>	<u>Annual Total</u>
Total Body	2.79 E-4	7.99 E-4	5.99 E-4	3.33 E-3	5.01 E-3
Bone	5.50 E-4	1.34 E-3	1.73 E-3	8.61 E-3	1.22 E-2
Liver	5.50 E-4	1.44 E-3	1.47 E-3	7.82 E-3	1.13 E-2
Thyroid	1.73 E-4	6.55 E-4	7.27 E-4	6.28 E-3	7.84 E-3
Kidney	9.05 E-5	2.81 E-4	1.55 E-4	3.51 E-4	8.78 E-4
Lung	2.06 E-4	4.71 E-4	6.73 E-4	3.46 E-3	4.81 E-3
G.I. LLI	1.02 E-3	1.11 E-3	1.38 E-3	2.96 E-2	3.31 E-2



DIABLO CANYON POWER PLANT
SEMIANNUAL RADIOACTIVE EFFLUENT RELEASE REPORT 1989

TABLE 9

PERCENT OF TECHNICAL SPECIFICATION LIMITS¹
FOR RADIOACTIVE LIQUID EFFLUENTS

<u>ORGAN</u>	Percent				
	<u>First Quarter</u>	<u>Second Quarter</u>	<u>Third Quarter</u>	<u>Fourth Quarter</u>	<u>Annual Total</u>
Total Body	1.86 E-2	5.33 E-2	3.99 E-2	2.22 E-1	1.67 E-1
Bone	1.10 E-2	2.68 E-2	3.46 E-2	1.72 E-1	1.22 E-1
Liver	1.10 E-2	2.88 E-2	2.94 E-2	1.56 E-1	1.13 E-1
Thyroid	3.46 E-3	1.31 E-2	1.45 E-2	1.26 E-1	7.84 E-2
Kidney	1.81 E-3	5.62 E-3	3.10 E-3	7.02 E-3	8.78 E-3
Lung	4.12 E-3	9.42 E-3	1.35 E-2	6.92 E-2	4.81 E-2
G.I. LLI	2.04 E-2	2.22 E-2	2.76 E-2	5.92 E-2	3.31 E-1

Note:

¹ Technical Specification 3.11.1.2



ENCLOSURE 2

SEMIANNUAL REPORT RADIOACTIVE EFFLUENT
RELEASE REPORT, FIRST HALF
1990

100-44267-2026-100

100-44267-2026-100

100-44267-2026-100

100-44267-2026-100

100-44267-2026-100

100-44267-2026-100

100-44267-2026-100