

REGULATORY INFORMATION DISTRIBUTION SYSTEM (RIDS)

ACCESSION NBR: 8709150318 DOC. DATE: 87/09/10 NOTARIZED: NO DOCKET #  
 FACIL: 50-275 Diablo Canyon Nuclear Power Plant, Unit 1, Pacific Ga 05000275  
 50-323 Diablo Canyon Nuclear Power Plant, Unit 2, Pacific Ga 05000323  
 AUTH. NAME AUTHOR AFFILIATION  
 SHIFFER, J. D. Pacific Gas & Electric Co.  
 RECIP. NAME RECIPIENT AFFILIATION  
 Document Control Branch (Document Control Desk)

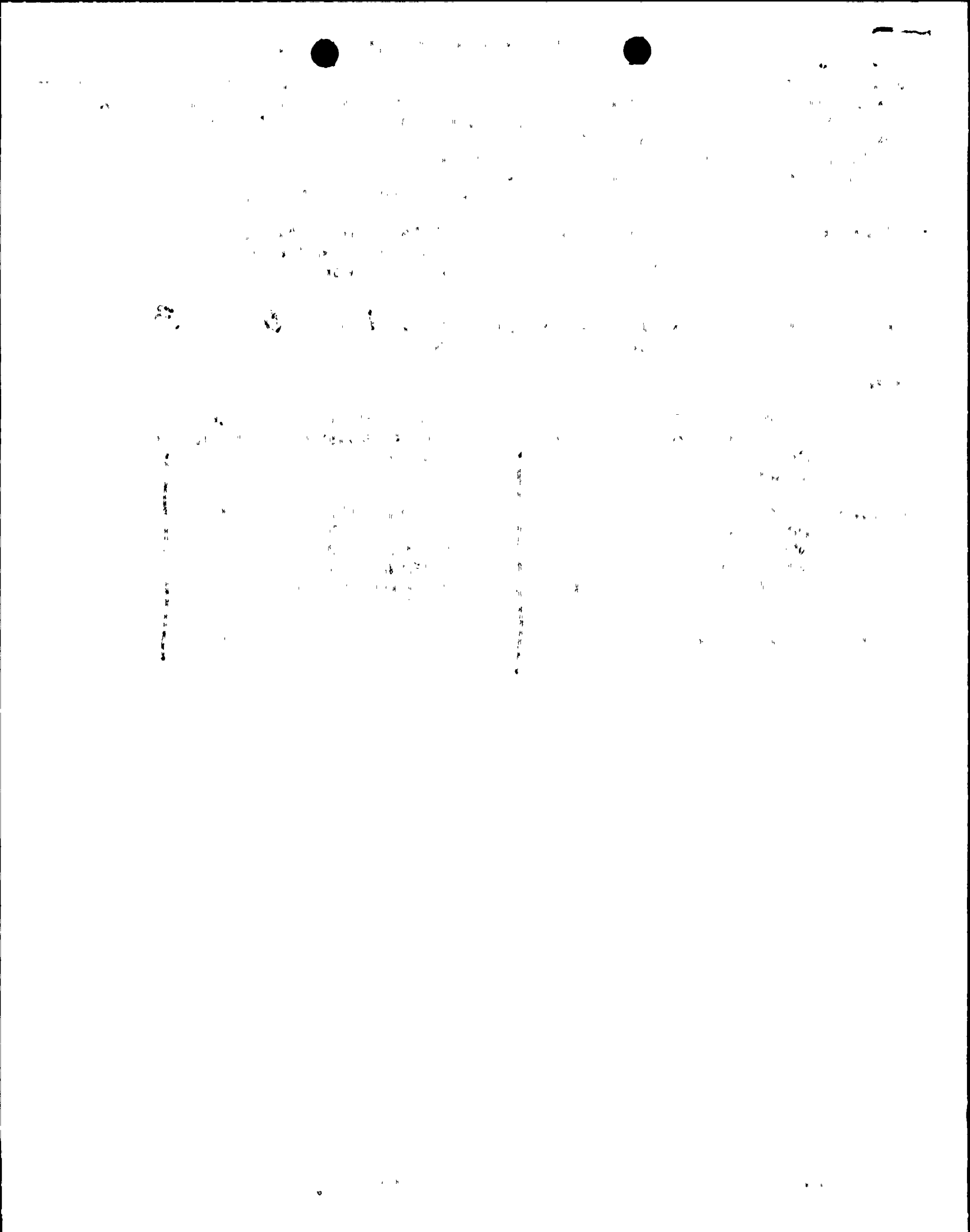
SUBJECT: Submits addl info supporting B70514 License Amend Request  
 87-07 to revise Tech Spec Table 3.12-1, "Radiological  
 Environmental Monitoring Program," in response to NRC  
 request.

DISTRIBUTION CODE: A001D COPIES RECEIVED: LTR 1 ENCL 0 SIZE: 3  
 TITLE: OR Submittal: General Distribution

NOTES:

	RECIPIENT ID CODE/NAME	COPIES		RECIPIENT ID CODE/NAME	COPIES	
		LTTR	ENCL		LTTR	ENCL
	PD5 LA	1	0	PD5 PD	5	5
	TRAMMELL, C	1	0			
INTERNAL:	ACRS	6	0	ARM/DAF/LFMB	1	0
	NRR/DEST/ADS	1	0	NRR/DEST/CEB	1	0
	NRR/DEST/MTB	1	0	NRR/DEST/RSB	1	0
	NRR/DOEA/TSB	1	0	NRR/PPAS/ILRB	1	0
	DGC/HDS2	1	0	<u>REG FILE</u> 01	1	0
	RES/DE/EIB	1	0			
EXTERNAL:	EG&G BRUSKE, S	1	0	LPDR	2	2
	NRC PDR	1	0	NSIC	1	1

TOTAL NUMBER OF COPIES REQUIRED: LTTR 28 ENCL 25



# PACIFIC GAS AND ELECTRIC COMPANY

PG&E + 77 BEALE STREET • SAN FRANCISCO, CALIFORNIA 94106 • (415) 781-4211 • TWX 910-372-6587

JAMES D. SHIFFER  
VICE PRESIDENT  
NUCLEAR POWER GENERATION

September 10, 1987

PGandE Letter No.: DCL-87-219

U. S. Nuclear Regulatory Commission  
ATTN: Document Control Desk  
Washington D.C. 20555

Re: Docket No. 50-275, OL-DPR-80  
Docket No. 50-323, OL-DPR-82  
Diablo Canyon Units 1 and 2  
Additional Information Regarding  
License Amendment Request 87-07, Revision of  
Technical Specification Table 3.12-1,  
Radiological Environmental Monitoring Program

Gentlemen:

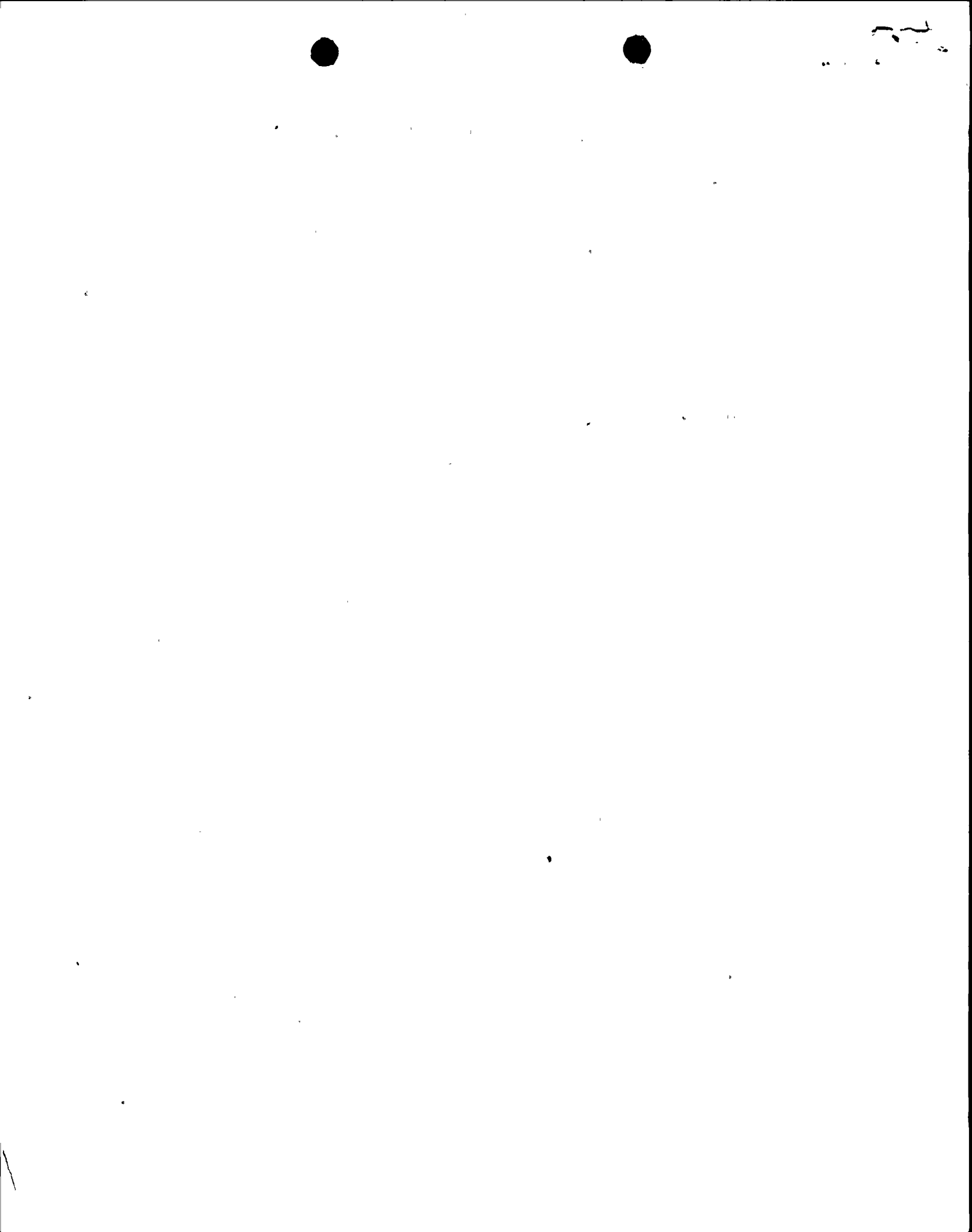
PGandE letter DCL-87-109, dated May 14, 1987, submitted License Amendment Request (LAR) 87-07, revision of Technical Specification Table 3.12-1, Radiological Environmental Monitoring Program. This letter is in response to a request from the NRC Staff for additional information needed to complete the LAR review regarding the justification of the new control location for the biological sampling area.

Presently, sample location areas identified in Technical Specification Table 3.12-1, Item 4.b, as Pacific Ocean South of Diablo Cove (POS) and Pacific Ocean North of Diablo Cove (PON) are designated as background sampling locations not influenced by plant discharge. The sampling of POS and PON normally includes marine sampling in an area about 1 acre in size. These sampling locations are approximately 1/4 mile south and 1/4 mile north, respectively, of Diablo Cove. These sampling locations must not be influenced by radioactive liquid effluent discharges to obtain a meaningful analytical comparison. After a review of the analytical data from samples taken within areas at PON and POS, it has been determined that there were some occasional traces of plant-related radioactive nuclides found in these sampling locations.

The change in location for determining background to another control sample location, 7C2, approximately 3 miles south of Diablo Cove, will be outside the influence of plant discharges. Sample location 7C2 was tested during the

8709150318	870910
PDR	ADDOCK
P	05000275
	PDR

Aool  
1/0



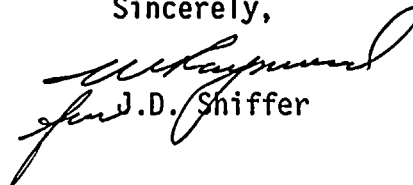
Document Control Desk  
PGandE Letter No. DCL-87-219  
September 10, 1987  
Page 2

third and fourth quarters of 1986 and was determined to be suitable as a control location since no plant-related radioactive nuclides were detected. The proposed change will provide data on environmental radioactivity that is not associated with plant discharges and will ensure the accuracy of the determination of plant discharge radioactivity.

Currently, control sampling data are being collected from sample locations, 7C2, POS, and PON for compliance with Technical Specification Table 3.12-1, Item 4.b.

Kindly acknowledge receipt of this material on the enclosed copy of this letter and return it in the enclosed addressed envelope.

Sincerely,

  
for J.D. Shiffer

cc: L. J. Chandler  
J. B. Martin  
M. M. Mendonca  
P. P. Narbut  
B. Norton  
CPUC  
Diablo Distribution

1585S/0051K/DY/1539

32  
A  
1001 2EB 1001  
23-06453

USNRC-DS

1987 SEP 15 A 9:58