

CITY OF PISMO BEACH, CALIFORNIA



CITY HALL
1000 BELLO ST. • P.O. BOX 3
PISMO BEACH, CALIFORNIA, 93449
TELEPHONE 805/773/4657

September 16, 1982

Dr. Nunzio J. Palladino
Chairman
United States Nuclear Regulatory Commission
1717 "H" Street Northwest
Washington, D.C. 20555

RE: Request of City of Pismo Beach for funds for fallout shelters and demand that all licenses for operation of the Diablo Canyon Nuclear Power Plant be withheld until emergency procedures adequately protect the City of Pismo Beach

Dear Chairman Palladino:

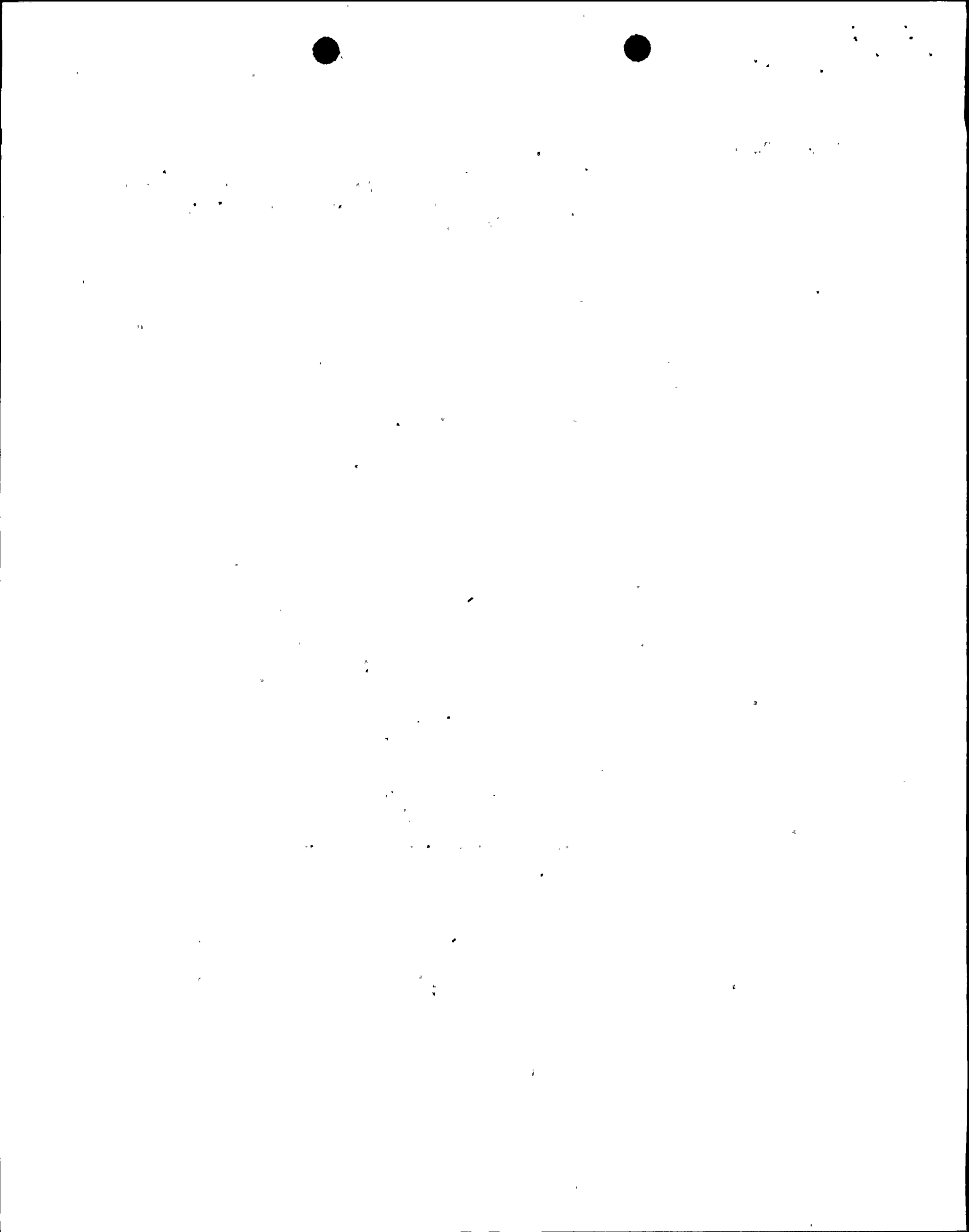
I am writing to you on behalf of the City Council of the City of Pismo Beach. The City wishes to express its extreme concern regarding your premature consideration of an operating permit, either low power or full power, for the Diablo Canyon Nuclear Power Plant. The City would be appalled that your licensing commission would even entertain the thought of considering a permit for operation of Diablo Canyon until an adequate emergency response plan has been adopted by every affected and responsible agency. The current proposed County Emergency Response Plan for San Luis Obispo County readily acknowledges that several small to moderate size communities in close proximity to the power plant will not be able to be evacuated in the event of an accident at Diablo Canyon. Pismo Beach is one of those communities.

The proposed Emergency Response Plan, prepared in anticipation of an accident at Diablo Canyon, provides as our measure for coping with such an accident the option of closing all windows and doors and simply staying indoors as the radiation plume passes over our City. It appears that Pacific Gas and Electric Company, the County Emergency Plan staff, and the Nuclear Regulatory Commission are little concerned for the welfare of the citizens of Pismo Beach. As one Pismo Beach citizen appropriately stated, the loss of the City of Pismo Beach appears to be an "acceptable risk" in the attempt to generate energy at Diablo Canyon. To date, we have received very little evidence to support the contrary.

For example, when a representative of Pacific Gas and Electric Company was approached for his receptiveness in providing adequate (safe) shelters for Pismo Beach, he suggested that P.G. & E. could provide loans to individuals for weather stripping of homes and businesses to provide shelter from the nuclear radiation plume. As I am sure the Nuclear Regulatory Commission is aware, standard homes and businesses of up to 80 years in age and constructed of wood, stucco and other common construction materials will provide little protection from a radiation plume, even with "weather stripping".

-Continued-

8208290131



The City of Pismo Beach has been placed in an uncommonly hazardous situation due to our proximity to Diablo Canyon Nuclear Power Plant. The attached Resolution, adopted unanimously by the City Council of the City of Pismo Beach, states but just a few of the extreme problems associated with the current Emergency Response Plan for San Luis Obispo County. Based upon these valid and vitally important findings, our City Council makes the following requests:

1. The City Council hereby requests that the Federal Government and the Nuclear Regulatory Commission grant monies for the construction, maintenance and manpower for operation of fallout shelters for the normal expected population of Pismo Beach, including visitors, of approximately 10,000 persons.
2. The City Council further requests that the Federal Government institute a program for expansion of those shelters as the population of the City increases.
3. The City Council lastly, and most importantly, requests that the Nuclear Regulatory Commission withhold any operations of licenses for power for Diablo Canyon Nuclear Power Plant until after adequate shelters have been completed.

We hope that you will give serious consideration in withholding any licenses to Pacific Gas and Electric Company for operation of Diablo Canyon until measures have been completed which would protect the lives of the citizens of Pismo Beach and the other communities for which evacuation is impossible or impractical.

We would appreciate your sincere consideration of this grave matter.

Thank you.

Sincerely,



William Richardson
Mayor
City of Pismo Beach

WR/tn

cc: Senator Alan Cranston
Congressman Leon Panetta
Assemblywoman Carol Hallett
County Board of Supervisors
County Planning Department
County Department of Civil Disaster/Defense
City Council
City Administrator

Attachments: 5



RESOLUTION NO. 1692

A RESOLUTION OF THE CITY COUNCIL OF THE CITY OF PISMO BEACH REQUESTING NUCLEAR REGULATORY COMMISSION FUNDS FOR FALLOUT SHELTERS AND DEMANDING THAT ALL LICENSES FOR OPERATION OF THE DIABLO CANYON NUCLEAR POWER PLANT BE WITHHELD UNTIL SHELTERS ARE COMPLETE.

WHEREAS, the County Emergency Response Plan states that evacuation of the City of Pismo Beach may be infeasible due to the short warning time and length of time necessary to warn all citizens of an emergency at Diablo Canyon Nuclear Power Plant; and

WHEREAS, there are inadequate numbers of school buses, bus drivers, and time to effectively evacuate any of the public or private schools located in Pismo Beach; and

WHEREAS, the City has determined that measures suggested in the Emergency Response Plan for simply closing all windows and doors and staying indoors until a nuclear plume passes over the City are totally inadequate; and

WHEREAS, the City believes that the proximity of the Diablo Nuclear Power Plant to the City and to an active earthquake fault poses an unusual hazard to the City of Pismo Beach; and

WHEREAS, fog, rain and other climatic conditions can easily further hamper efforts for evacuation of Pismo Beach; and

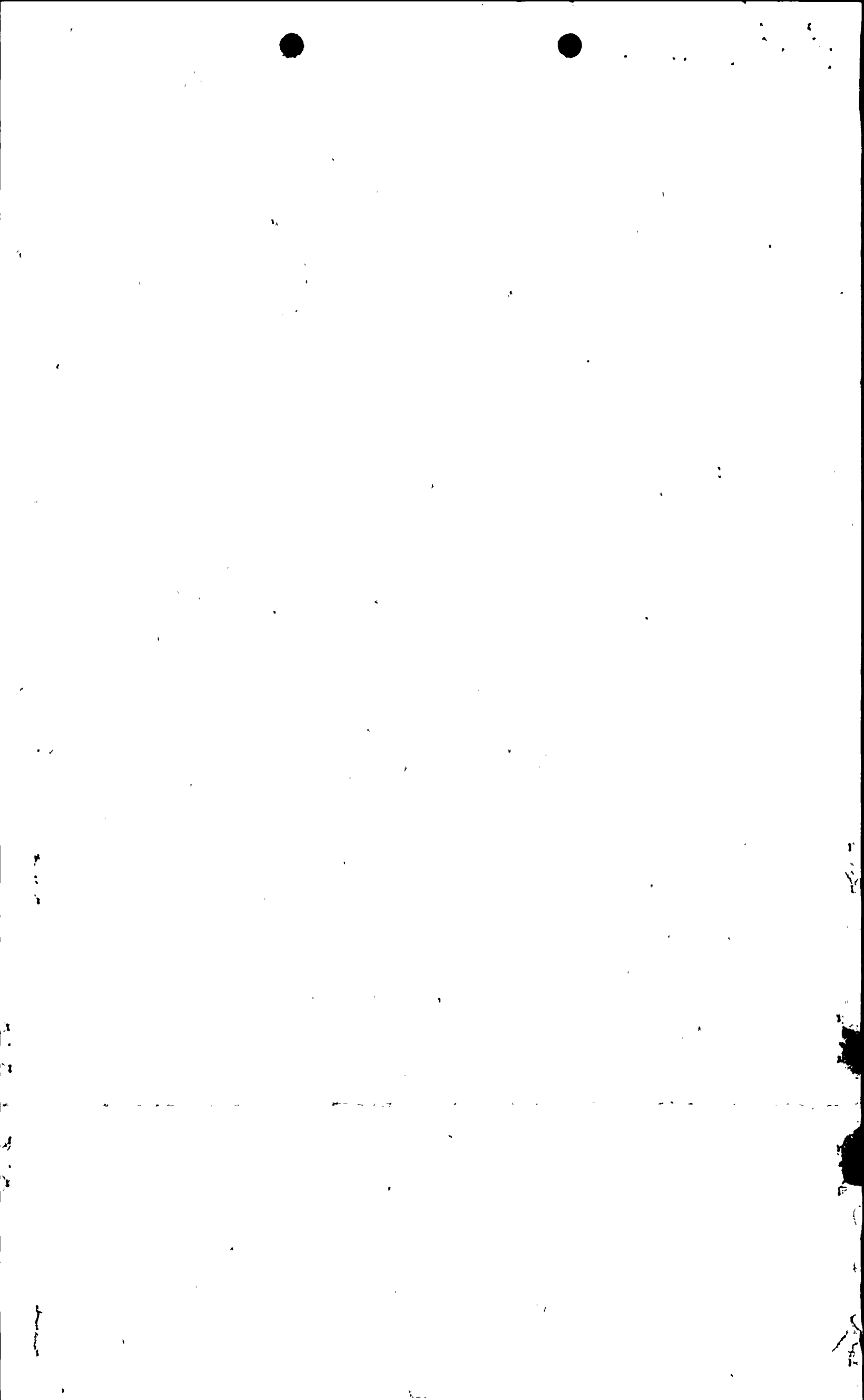
WHEREAS, up to half of the 10,000 persons located in Pismo Beach at any one time are likely to be visiting the area from somewhere else in the state or country and will be completely unaware of any evacuation plans or measures nor will they likely be aware of the purpose of the emergency warning sirens; and

WHEREAS, normal prevailing wind conditions place Pismo Beach in an uncommonly hazardous situation.

NOW, THEREFORE, BE IT RESOLVED by the City Council of the City of Pismo Beach as follows:

1. The City Council hereby requests that the Federal Government and the Nuclear Regulatory Commission grant monies for the construction, maintenance and manpower for operation of fallout shelters for the normal expected population of Pismo Beach, including visitors, of approximately 10,000 persons.
2. The City Council further requests that the Federal Government institute a program for expansion of those shelters as the population of the City increases.
3. The City Council lastly, and most importantly, requests that the Nuclear Regulatory Commission withhold any operations of licenses for power for Diablo Canyon Nuclear Power Plant until after adequate shelters have been completed.

On motion of Councilmember Mellow, seconded by Councilmember Hubbard, the foregoing Resolution is passed and adopted at a regular meeting of the City Council of the City of Pismo Beach, held this 13th day of September, 1982, on the following roll call vote, to wit:



AYES: Mellow, Hubbard, Eldwayen, Richardson

NOES: None

ABSENT: Carter

ABSTAIN: _____



Bill Richardson
Mayor
City of Pismo Beach

ATTEST:

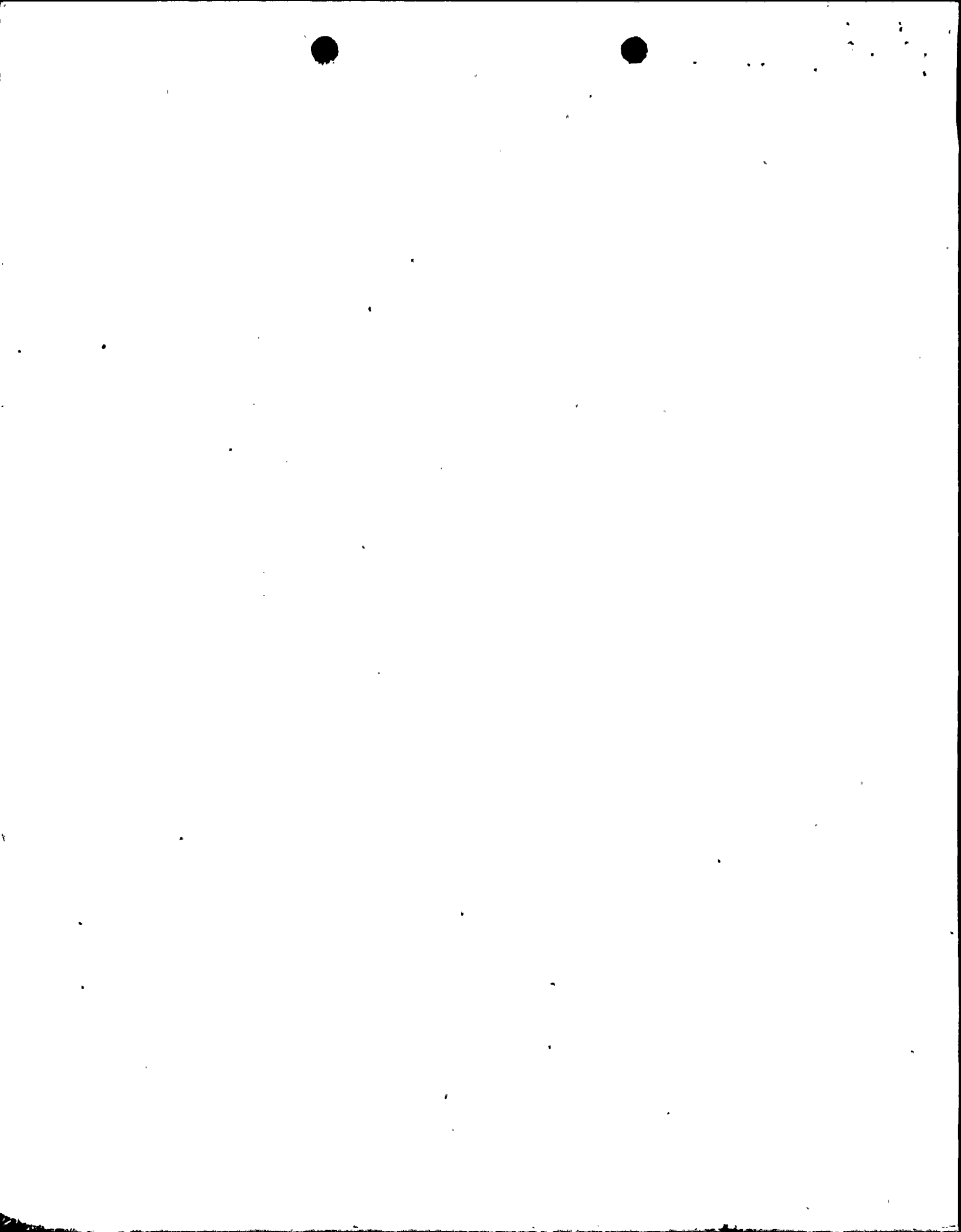


Marion L. Houston, CMC
City Clerk
City of Pismo Beach

APPROVED AS TO FORM:



A.J. Shaw, Jr.
City Attorney
City of Pismo Beach



M E M O

DATE: September 2, 1982

TO: City Administrator and Nuclear Power Plant Emergency Response Plan Committee (Marian Mellow and Effie McDermott)

FROM: Community Development Director

RE: Suggested Statement of Concern to N.R.C. that Diablo should not be allowed to operate until adequate radiation shelters have been completed for Pismo Beach

I. INTRODUCTION:

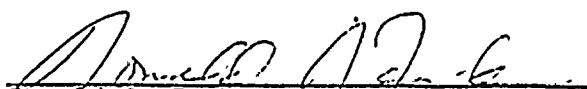
The Emergency Response Plan for the County of San Luis Obispo admits that evacuation of certain areas near the plant may be infeasible before the nuclear radiation plume reaches those areas. Included in areas for which time may not be adequate for evacuation is the City of Pismo Beach. The Emergency Response Plan suggests that persons in Pismo Beach may likely have to resort to simply staying in-doors and closing all windows and doors until the radiation plume has passed over the area on its way southward to Santa Barbara.

The residential areas, commercial areas, recreation areas and schools will all be subject to these seemingly inadequate and unrealistic measures. In fact, schools in particular will be almost impossible to evacuate due to the extreme shortage in school buses and the length of time to round up bus drivers and transport the buses from Arroyo Grande to Pismo Beach against the evacuating southbound traffic. I believe the Council's Emergency Evacuation Plan Committee's determination was that fallout shelters would be necessary to adequately protect the public. Most existing structures (homes, offices and schools) would offer little protection to the public.

II. RECOMMENDATION:

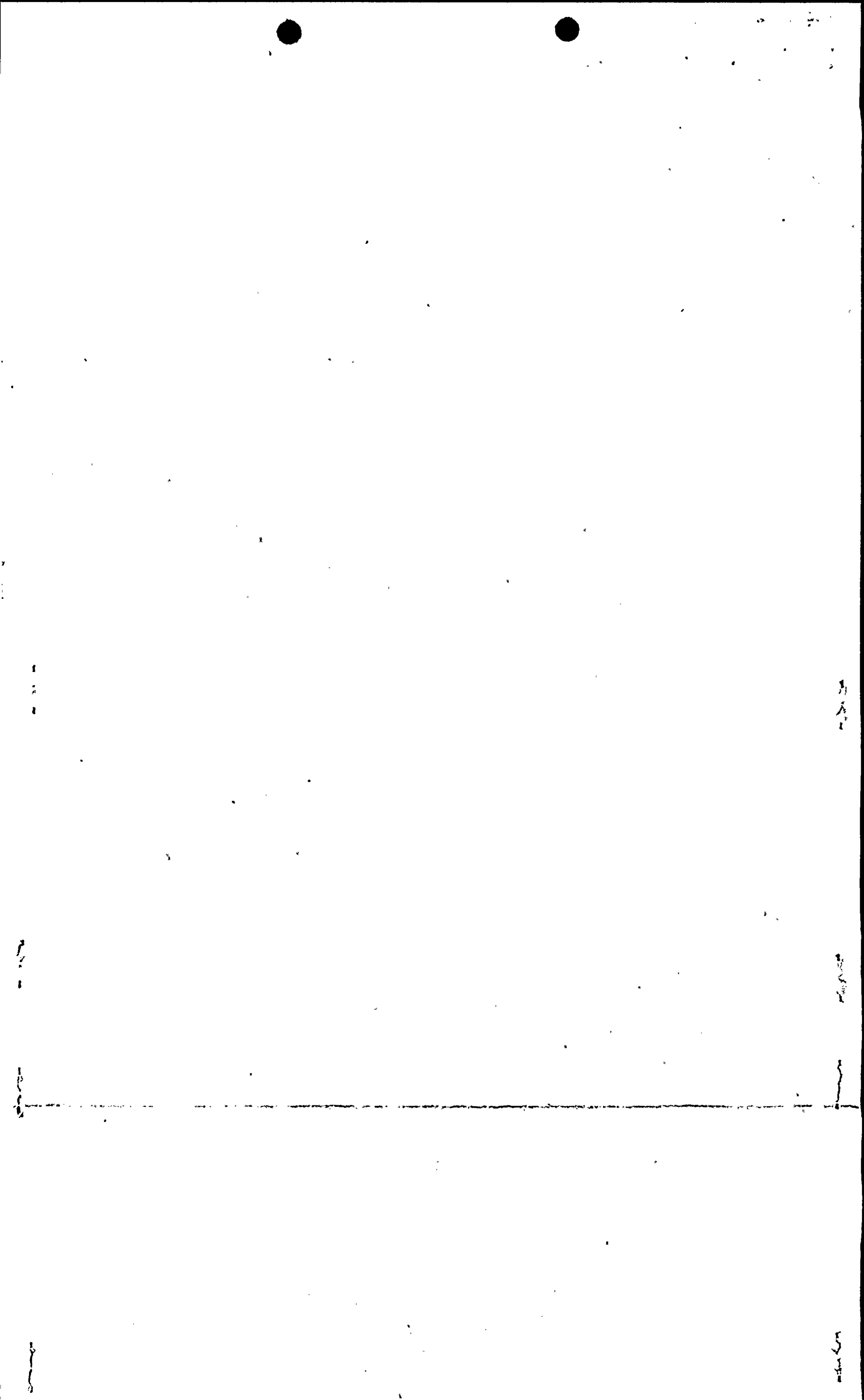
It appears appropriate for the City Council to make a plea to the N.R.C. for:

- A. Financial assistance in the construction of shelters for the 5,000 to 10,000 persons who may not be able to be evacuated, and
- B. Request that no license for any level of operation be granted for Diablo Canyon Nuclear Power Plant until after said shelters are completed.


Donald J. Funk
Community Development Director

DJF/tn

Attachment: Resolution for Council adoption



September 4, 1982

Pismo Beach City Council
1000 Bello St.
Pismo Beach, CA 93449

CITY OF PISMO BEACH
RECEIVED
SEP 0 1982

Re: Diablo Canyon Emergency Response Plan .

PLANNING DEPT.

Honorable Mayor and Members of the City Council:

As one of the citizens you assigned to the Diablo Canyon Emergency Response Plan Committee, and as a concerned resident, I appreciate the opportunity to endorse the request for a Resolution which has been submitted to you by the Community Development Director, Don Funk. Mr. Funk has stated in his request that the City of Pismo Beach is being placed in an unusually hazardous position of vulnerability due to the close proximity of the Diablo Canyon Nuclear Power Plant and the complete absence of adequate protection and evacuation measures.

Regardless of our differences of opinion of Nuclear Power in general, or Diablo Canyon in particular, it is incumbent on our public officials to recognize that accidents and equipment failures do occur, and have occurred. It is the duty and responsibility of our public officials to take reasonable steps to protect our homes and families in the event of an emergency.

We must also accept the factual information entered into the public record during the hearings on the Emergency Response Plan, specifically that:

- 1) The Emergency Response Plan is only an outline of the response measures that can reasonably be presumed to be taken, and to whom those responsibilities shall be assigned.
- 2) The Emergency Response Plan is not required to be a guarantee of public preparedness or public protection. There is no statement or opinion regarding probable success, or failure.
- 3) The Emergency Response Plan outlines the probable sequence of events which might occur in the event of minor to major releases into the atmosphere of radioactivity.
- 4) The Emergency Response Plan outlines and assigns the responsibilities and duties of the various agencies in the event of minor to major emergencies.
- 5) The Emergency Response Plan indicates that, in the event of a major release of airborne radioactivity, the City of Pismo Beach under normal circumstances would have to resort to sheltering for the protection of the residents.
- 6) The Emergency Response Plan indicates that typical structures located in the City of Pismo Beach would provide little or no protection from radioactive contaminants.



1
2
3
4
5
6
7
8
9
10
11
12
13
14
15
16
17
18
19
20
21
22
23
24
25
26
27
28
29
30
31
32
33
34
35
36
37
38
39
40
41
42
43
44
45
46
47
48
49
50
51
52
53
54
55
56
57
58
59
60
61
62
63
64
65
66
67
68
69
70
71
72
73
74
75
76
77
78
79
80
81
82
83
84
85
86
87
88
89
90
91
92
93
94
95
96
97
98
99
100

The Federal Government, and it's various agencies, have long embraced the doctrine that progress involves a certain amount of risk. The fact that nothing is entirely safe has generated the term "acceptable risk."

"Acceptable risk" is similar to "acceptable level of unemployment." When only Nine Percent of our workforce is unemployed, that Nine Percent of the workforce is One Hundred Percent unemployed. "Acceptable risk" in emergency preparedness means that most people and property can be saved. Those who fall into the category of "acceptable risk" may be lost or destroyed.

In the national interest, in a push for greater and greater supplies of energy, the loss of a small city of 5,000 people would likely be considered an "acceptable risk."

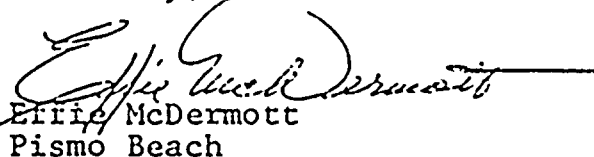
The fact that the San Luis Obispo County Emergency Response Plan for Diablo Canyon Nuclear Power Plant has been certified as an acceptable document, knowing that there is a possibility that Avila Beach and Pismo Beach could be destroyed, however remote the possibility, is conclusive evidence that we have been categorized as "acceptable loss."

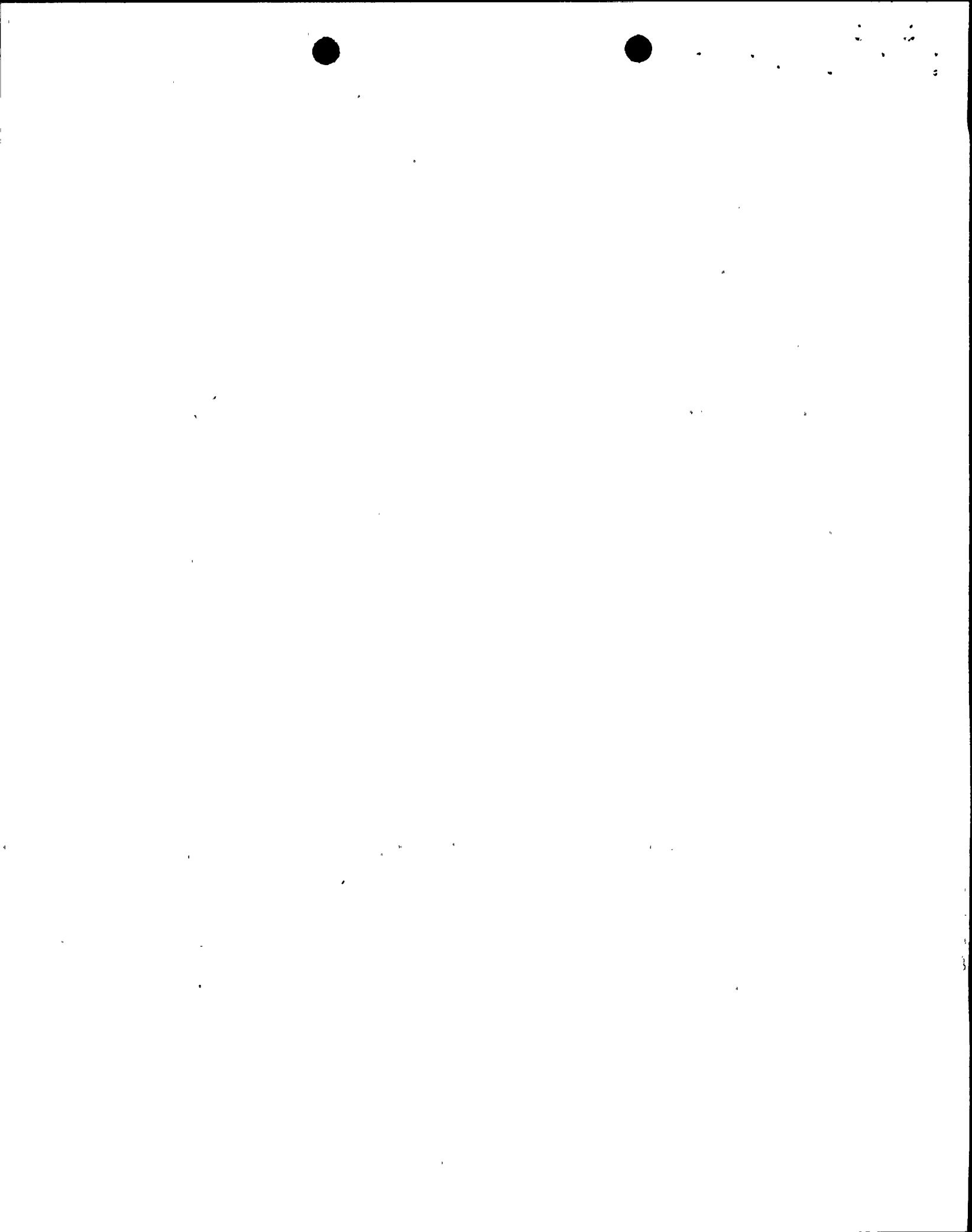
The Diablo Canyon Emergency Response Plan indicates that it is reasonable to presume that in the lifetime of the plant one or more emergencies will occur and one or more will result in a major release of radioactivity into the atmosphere. Further, it is reasonable to presume that under such circumstances the City of Pismo Beach will be contaminated by the plume in less time than an evacuation could be accomplished, resulting in the need for local sheltering of the populace. Further, it is known that local homes and buildings would be insufficient and impotent in providing protection for humans from airborne radioactivity.

The experts are divided as to the degree of risk, but even the proponents of nuclear power speak of "acceptable risk." It is reasonable to require that mitigation measures be implemented to provide for our safety in the event of an emergency at the Diablo Canyon Nuclear Power Plant.

Mr. Funk's suggested Resolution is well considered and should be supported by a unanimous council.

Sincerely,


Ernie McDermott
Pismo Beach



CITY OF PISMO BEACH, CALIFORNIA



CITY HALL
1000 BELLO ST. • P.O. BOX 3
PISMO BEACH, CALIFORNIA, 93449
TELEPHONE 805/773/4657

January 13, 1982

Honorable Chairman and
Members of the Board of Supervisors
County of San Luis Obispo
County Courthouse
San Luis Obispo, CA 93408

RE: San Luis Obispo Nuclear Emergency Response Plan

Gentlemen:

Today you will be deliberating about one of the most important and far reaching issues ever to face any governing board. That issue, of course, is the San Luis Obispo County Nuclear Power Plant Emergency Response Plan. Although we, as Pismo Beach elected officials, can certainly appreciate the necessity to secure extensive public testimony before approval of a Plan of this magnitude, we are vehemently opposed to any approval or endorsement of this Plan until its innumerable ambiguities, deficiencies and omissions have been clarified and rectified.

Although the Draft Emergency Response Plan is a ponderous document, it is hardly comprehensive. Instead it is grossly, if not criminally, derelict in its failure to properly delineate a workable mechanism for insuring the safety and security of County residents if a nuclear accident occurs. Although the specific criticisms which we have about the Response Plan in its present configuration are far too numerous to encompass in this letter, we feel obligated to convey some of our more prominent concerns at this time.

First of all, since extensive evacuation is unrealistic, infeasible, and (let's face it) impossible, proper sheltering facilities would seem crucial. Unfortunately, proper fallout shelters are not available locally and the Response Plan does not specify how they will be provided. Certainly, no local City has necessary funds for such shelters. The Plan is also misleading in its references to people taking shelter within available facilities, facts which, left unclarified, predispose a high casualty rate if an accident occurs.

It is vitally important to have efficient and effective plans for our school children, such as a specific plan for one trip evacuation of schools, to insure the safety of this most precious and irreplaceable human resource. Unfortunately, most South County school busses are located in Arroyo Grande and bus drivers are dispersed among numerous cities when not working. This means that trained drivers may not be available when needed.

Training and proper equipment are obviously critical for those charged with the responsibility of public safety in the aftermath of a nuclear accident. Our

-Continued-



public safety personnel in Pismo Beach have not yet been adequately trained, and the Emergency Response Plan does not indicate how this training will occur. These personnel also lack the necessary equipment such as potassium iodide, protective suits, etc., to respond to such a nuclear incident. There are also, unfortunately, few physicians available with adequate training in handling radiation exposure cases, especially on the massive scale which may occur. The total inadequacy of the presently designated decontamination centers narrows even further the odds of achieving effective and expedient medical attention. Sadly, "odds" in this instance don't relate to football statistics. They relate to human lives.

If irrational actions by the general public are to be minimized following notification of an incident, it is vitally important that a thorough and accurate public education and information program be conducted long before such an incident would ever arise. P.G. & E. should rightfully pay for the cost of a satisfactory (to each locality) public information program as well as working closely with City officials in the proper implementation of these public information and education efforts. We are not optimistic that such information and education efforts can ever be accomplished based upon the generalized and incomplete Plan which now exists. While we realize the "Draft" Plan is intended, theoretically, to assimilate viable input before a final document is approved, how can meaningful input occur when only 40 percent of the Plan (4 out of 10 sections) has been offered for public and City review. Is it P.G. & E.'s intention that Cities write the remaining six sections or (more likely) that the blanks can be filled in later, perhaps spontaneously during a nuclear incident, as people attempt to react under extreme stress to a situation they neither are prepared for nor understand.

In summary, we have tried not to convey philosophical opposition to the nuclear plant itself but rather to touch upon only a handful of the major concerns which relate to the Emergency Response Plan and the procedures (or lack thereof) which will insure the public's safety. We must strongly reiterate our demand that P.G. & E. accept a greater responsibility for the preparedness of population areas surrounding the nuclear plant. This means that money should be provided by P.G. & E. for planning, equipment, training of personnel, public education, fallout shelters, etc. We are sure that you share our deeply felt concern about public safety and implore you to insist upon a complete Plan before your endorsement is given. We, the Pismo Beach City Council, certainly cannot and will not approve anything less than that. This letter was unanimously directed by and reflects the viewpoints of the City Council.

Sincerely,

Nebb Eldwayen
Mayor
City of Pismo Beach

NE/RLG/tn

1951
1952



Colony Days. Page A-4

Inside today

- New Hinckley letter. A-6
- Change in air at Poly. B-1
- Diablo hearings conflict. A-3



Blitter victory. Page A-6

San Luis Obispo County

Telegram-Tribune

20 PAGES TODAY



25¢ PER COPY

TUESDAY, SEPTEMBER 14, 1982

Pismo to NRC: Give us shelter

By Carol Roberts
Staff Writer
More on Diablo Canyon, Page A-3

Pismo Beach officials want fallout shelters before Diablo Canyon nuclear power plant goes into operation.

Pacific Gas and Electric Co.'s nuclear power plant shouldn't be allowed to fire up until fallout shelters are built for residents and tourists, the City Council said Monday.

And the officials strongly objected to

City's similar objections dealing with a federal highway and nuclear waste transportation plan.

The Pismo Beach officials are upset that the county area Council of Governments recently recommended the rail spur at the PG&E yard in Pismo Beach as a likely route.

Councilwoman Marian Mellow said she and Effie McDermott, a Pismo Beach planning commissioner, will voice the council's objections at a California Highway Patrol hearing on nuclear waste transportation at 10 a.m. Monday in San Luis Obispo's Veterans Memorial Building.

The women, who worked on the city's emergency evacuation plan, claim the Diablo Canyon plant poses an unusual hazard to Pismo Beach.

That's because the city could be filled with tourists who wouldn't know where to go if a radiation leak occurred or what warning sirens might mean.

Therefore, the City Council requests that the federal government and the Nuclear Regulatory Commission grant monies for the construction, maintenance and manpower for operation of fallout shelters for the normal expected population of Pismo Beach, including visitors, of approximately 10,000 persons," the officials stated in a resolution to the NRC.

The resolution passed unanimously with Councilman Robert Carter absent.

The council said homes, offices and schools would offer little protection from radiation and joked that fallout shelters eventually could be made conditions for future building in the city.

Jay Connor, PG&E's South County manager, didn't think the council was funny.

He said after the meeting that PG&E would offer up to \$3,500 in no-interest residential conservation audit loans that might lead to protection from radiation as well as weather.

Many of the things, such as weather stripping and caulking, that conserves energy in homes, could also protect residents in an emergency, he said, adding residents who qualified would have 50 months to pay back the loans.

Therefore, the City Council requests that the federal government and the Nuclear Regulatory Commission grant monies for the construction, maintenance and manpower for operation of fallout shelters.

Pismo Beach resolution to the NRC

possible PG&E plans to transport nuclear waste through the city by truck or rail.

A PG&E official said the best the company could offer would be financing for weather stripping that would protect homeowners from weather as well as radiation.

Pismo Beach already has an ordinance banning transportation of the waste or fuel on city streets, and the council learned Monday its objections might hold up for federal highways, such as Highway 101, as well.

Planning Director Don Funk said a federal court recently upheld New York

