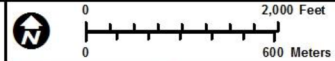
 Project Footprint



**Figure 2**  
Aerial Photograph

 **COX | McLAIN**  
Environmental Consulting

Prepared for: WCS	1 in = 2,000 feet
	Scale: 1:24,000
Prepared by: SL	Date: 5/4/2015

Aerial Source: NAIP (2014)

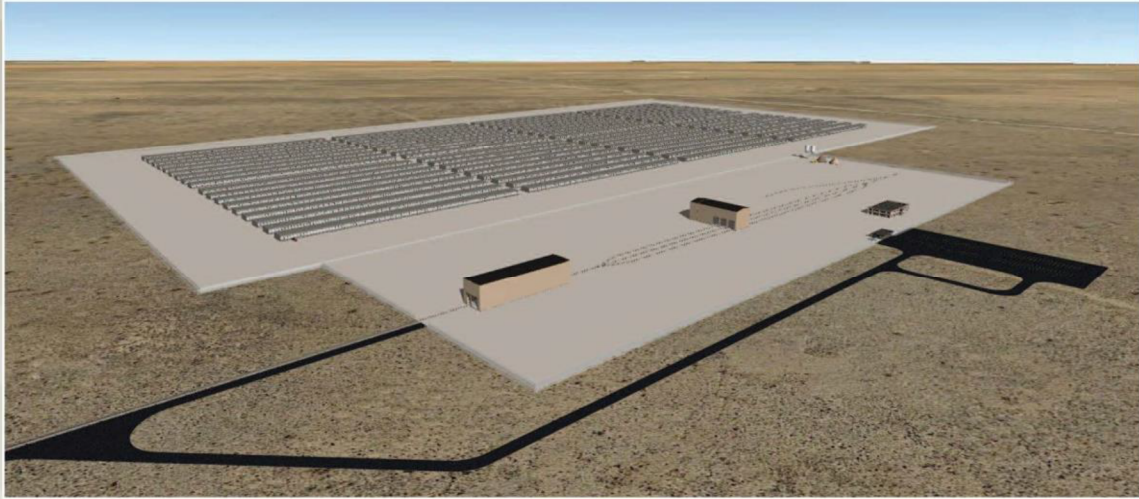
G:\Projects\WCS\Hist\_Figure 2\_Aerial\_20150428.mxd





AMERICA'S NUCLEAR SOLUTION

## POTENTIAL ISFSI SITE RENDERINGS



**Figure 3**  
Potential Storage Facility Site Design Renderings



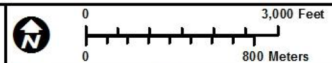


-  APE for Direct Impacts (project footprint)
-  APE for Indirect/Visual Impacts (1-mile radius)

Note: no previously recorded Texas resources mapped within either APE

Sources: THC (2015), TARL (2015)  
Aerial Source: NAIP (2014)

G:\Projects\WCS\Hist\_Figure 4\_APE\_20150428.mxd

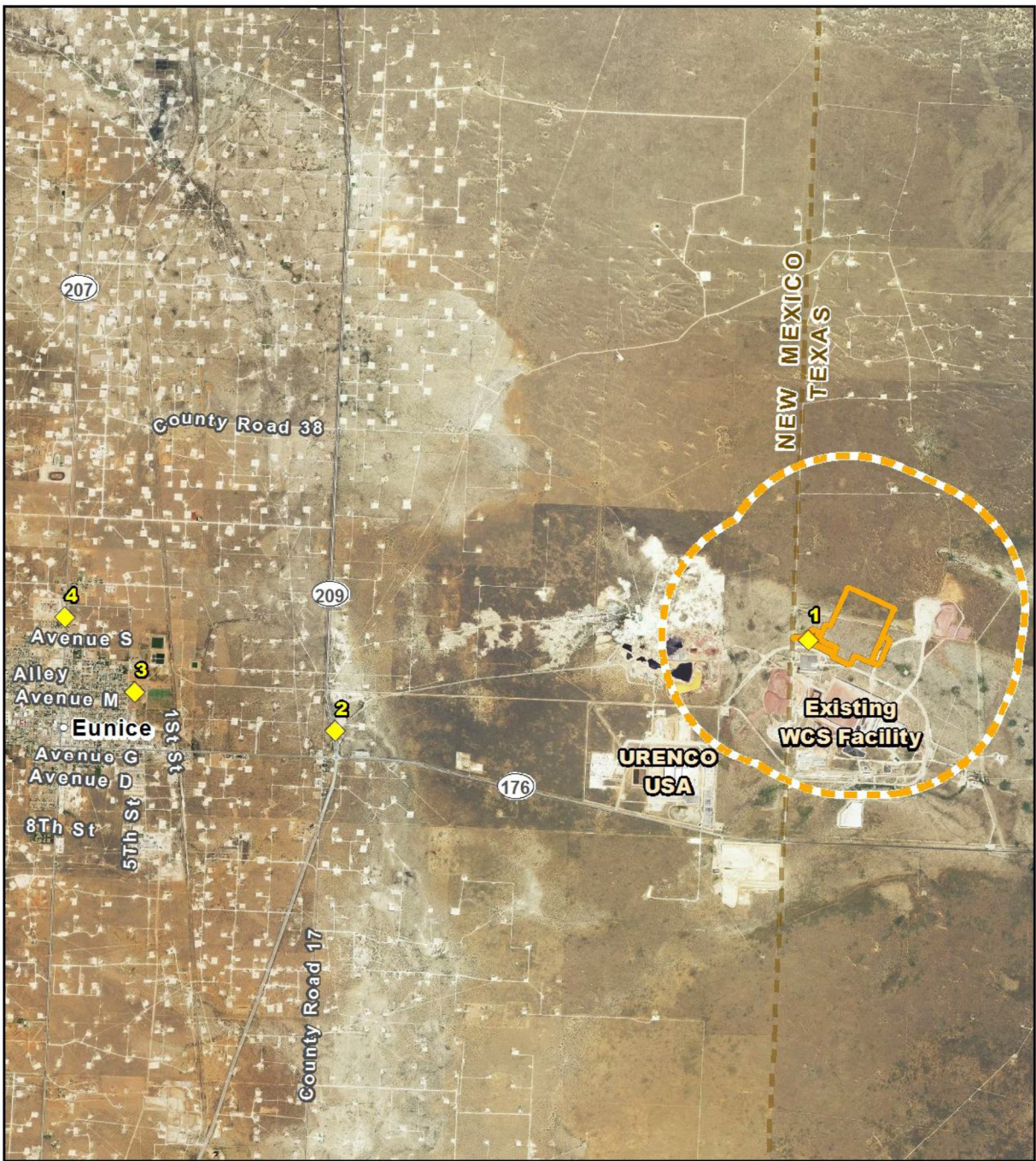





**Figure 4**  
**Location of Historic Area of Potential Effect**

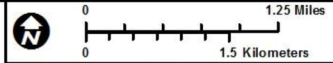
 **COX | McLAIN**  
Environmental Consulting

Prepared for: WCS	1 in = 3,000 feet
	Scale: 1:36,000
Prepared by: SL	Date: 5/4/2015





-  APE for Direct Impacts (project footprint)
-  APE for Indirect/Visual Impacts (1-mile radius)
-  Photo Location



**Figure 5**  
Viewshed  
Analysis

 **COX | McLAIN**  
Environmental Consulting

Prepared for: WCS	1 in = 1.25 miles
	Scale: 1:79,200
Prepared by: SL	Date: 5/1/2015

Source: CMEC (2015)  
Aerial Source: NAIP (2014)