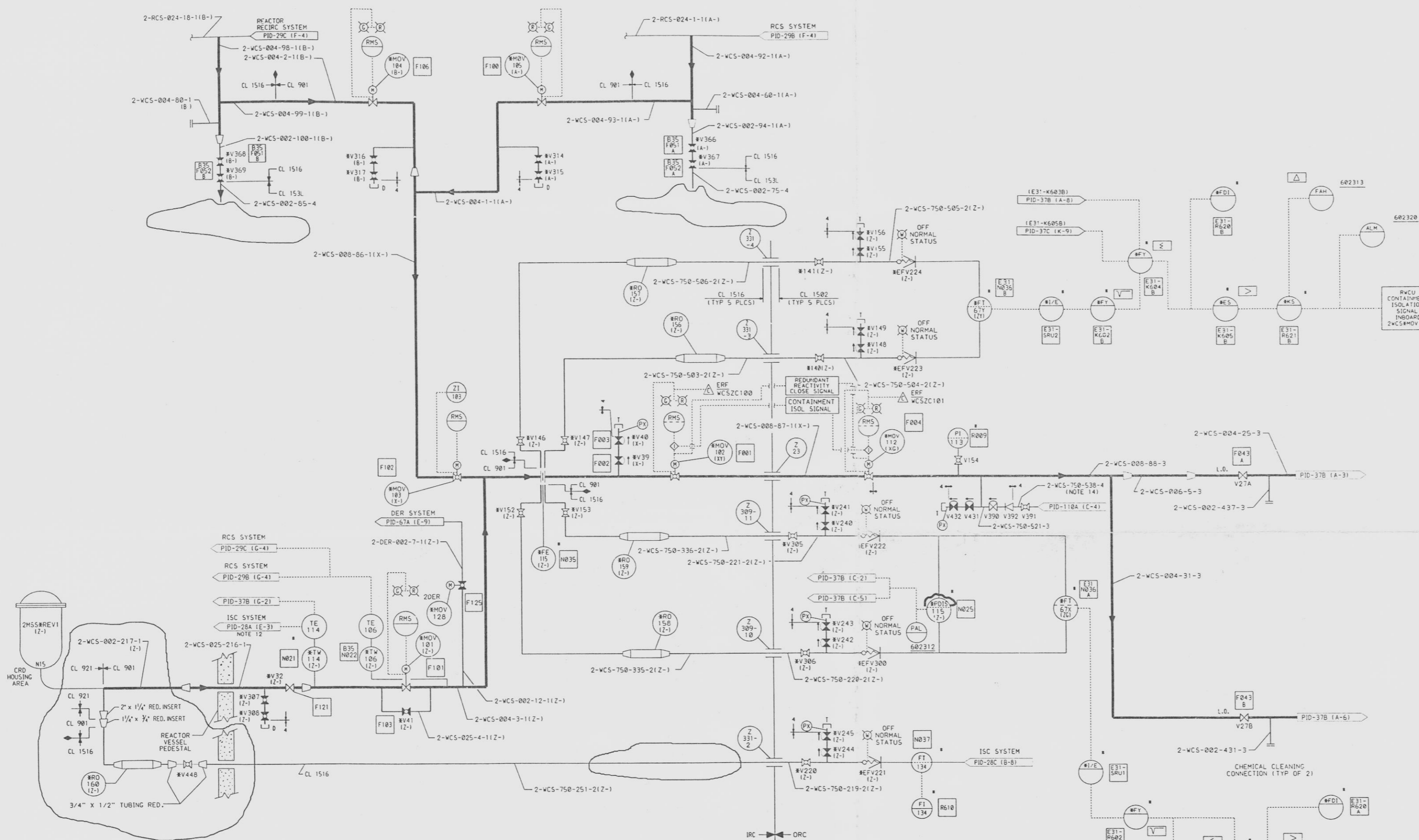


PID-37A-18



MARK NUMBER	VALVE DESCRIPTION	SIZE	NO. OF VALVES
M01101, 104, 105	VGW065-C-1110	4"	3
M01101, 112	VGW060-B-1110	4"	3
V366, 367, 368, 369	VW150-K-1111	2"	4
V27A, 27B	VGW090-F-311	4"	2
V32	VGW090-F-111	2-1/2"	1
V39, 40, 431, 432	VSS150-B-2	3/4"	4
V41	VW150-H-111	2-1/2"	1
V398	VSS150-B-3	3/4"	1
V140, 141, 220	VOS150-W-2	3/4"	5
V305, 205	VOS150-L-2	3/4"	4
V45, 143, 152, 153	VOS150-L-2	3/4"	4
V148, 149, 155, 156	VSS150-A-2	3/4"	18
V240, 241, 242, 243	V244, 245		
V307, 308, 314, 315	VOS150-F-2	3/4"	5
V316, 317	VOS150-F-3	3/4"	2
V154, V391	VCS150-E-3	3/4"	2
V392	VCS150-E-3	3/4"	1
V448	VOS00-5-2	1/2"	1



- NOTES:
1. ALL INSTRUMENT AND EQUIPMENT NUMBERS TO BE PREFIXED WITH "2WCS-" EXCEPT WHERE A DIFFERENT PREFIX IS SHOWN. AN ASTERISK (*) WILL REPLACE THE DASH (1-) IN THE PREFIX FOR EQUIPMENT OR INSTRUMENT WHICH ARE PART OF NUCLEAR SAFETY FEATURES SYSTEM.
 2. GENERAL ELECTRIC IDENTIFICATION NUMBERS ARE SHOWN IN SQUARES AND BE PREFIXED WITH G331.
 3. INSTRUMENT, PRESSURE, VENT, DRAIN & TEST CONNECTIONS ARE 3/4" EXCEPT WHERE SHOWN OTHERWISE.
 4. ALL PIPING TO BE CLASS 901 UNLESS OTHERWISE NOTED.
 5. TEMPERATURE CONNECTIONS ARE 1/4" UNLESS SHOWN OTHERWISE.
 6. LINES 1" & SMALLER WHICH ARE PART OF THE REACTOR COOLANT PRESSURE BOUNDARY SHALL BE SAFETY CLASS 2.
 7. — DENOTES DISSIMILAR METAL WELD.
 8. CHEMICAL CLEANING CONNECTIONS DO NOT REQUIRE VALVES.
 9. # DENOTES EQUIPMENT SUPPLIED BY GE-ND.
 10. INSTRUMENTS TO BE LOCATED IN RADIATION ZONE 4, 5 OR 6 UNLESS OTHERWISE NOTED.
 11. TEST COHN. SHALL BE BRANCH CONN. FROM THE SIDE OR TOP OF MAIN PROCESS PIPING.
 12. NO FLAG SHOWN ON CORRESPONDING DOCUMENT. COORDINATES PROVIDE INTERFERENCE LOCATION.
 13. ASME CLASS 3 VALVES USED FOR PRESS-VALV1, VALV2 DUE TO AVAILABILITY. ASME CLASS 3 VALVES MAY BE USED AS REPLACEMENTS. ASME CLASS 3 VALVES USED FOR 2WCS-V101 DUE TO AVAILABILITY. CLASS 4 (ANSI B31.1) VALVE MAY BE USED AS REPLACEMENT.
 14. LINE 2-WCS-750-538-4 IS ASME SA106 GR.B MATERIAL. ASTM A106 GR.B MATERIAL MAY BE USED AS REPLACEMENT.

APERTURE CARD

ORIGINAL

9902080113

Drawing 50-220
 Revision 9902080332
 Date 01/20/99
 Regulatory Location 113

REV	DATE	DESCRIPTION OF REVISION	W.C.	J.P.	DES	CHKD	ENG	ERRCD	ELEC	WCH	STR	MF	REV	DATE	DESCRIPTION OF REVISION	W.C.	J.P.	DES	CHKD	ENG	ERRCD	ELEC	WCH	STR	MF	REV	DATE	DESCRIPTION OF REVISION	W.C.	J.P.	DES	CHKD	ENG	ERRCD	ELEC	WCH	STR	MF			
11	11-27-98	INCORPORATES DDC 2F01624																																							
		ENGINEERING ENHANCEMENT ADDED VALVE IDENTIFICATION FOR 2WCS4V42 AND CHANGED 105 TO 106 COORD 11-81																																							
		REVISED PER DDC 2F1380, 2F21623A																																							

SAFETY RELATED
NON SAFETY RELATED
(REF. SAR FIG. 5.4-16a & ISPT-37A)

NIAGARA MOHAWK

NINE MILE POINT
NUCLEAR STATION - UNIT 2
SCRIBA, N.Y.

PIPING & INSTRUMENTATION DIAGRAM
REACTOR WATER CLEANUP
SYSTEM

SCALE: NONE DRAWING NO: PID-37A-18