

AGASTAT TYPE GPI RELAY TABULATION

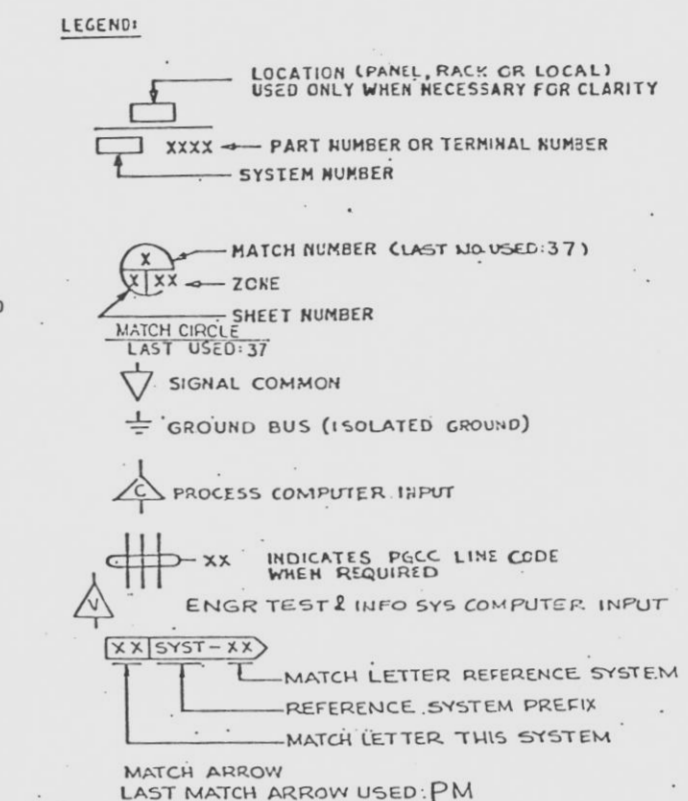
BI	B4	RI	M1	T1	R2	M2	T2	R3	M3	T3	R4	M4	T4
K7A SH.3	SEE SH.3	---	---	SEE SH.3	---	---	---	SEE SH.3	---	---	---	SEE SH.3	---
K7B SH.3	SEE SH.3	---	---	SEE SH.3	---	---	---	SEE SH.3	---	---	---	SEE SH.3	---
K7C SH.3	SEE SH.3	---	---	SEE SH.3	---	---	---	SEE SH.3	---	---	---	SEE SH.3	---
K7D SH.3	SEE SH.3	---	---	SEE SH.3	---	---	---	IND 'A' SH.3	---	---	---	---	K7A SH.3
K7E SH.3	SEE SH.3	---	---	SEE SH.3	---	---	---	IND 'B' SH.3	---	---	---	---	K7B SH.3
K7F SH.3	SEE SH.3	---	---	SEE SH.3	---	---	---	IND 'C' SH.3	---	---	---	---	K7C SH.3
K7G SH.3	---	SEE SH.5	---	---	SEE SH.5	---	---	SEE SH.3	---	---	---	SEE SH.3	---
K7H SH.3	---	SEE SH.5	---	---	SEE SH.5	---	---	SEE SH.3	---	---	---	SEE SH.3	---
K7J SH.3	---	SEE SH.5	---	---	SEE SH.5	---	---	SEE SH.3	---	---	---	SEE SH.3	---
K11 SH.4	---	---	---	---	---	---	---	---	---	---	---	---	---
K12 SH.4	---	---	---	---	---	---	---	---	---	---	---	---	---
K13 SH.4	---	---	---	---	---	---	---	---	---	---	---	---	---
K14 SH.4	---	---	---	---	---	---	---	---	---	---	---	---	---
K15 SH.5	---	---	---	---	---	---	---	---	---	---	---	---	---
K16A SH.3	---	---	---	---	---	---	---	---	---	---	---	---	---
K16B SH.3	---	---	---	---	---	---	---	---	---	---	---	---	---
K16C SH.3	---	---	---	---	---	---	---	---	---	---	---	---	---
K17A SH.2	---	---	---	---	---	---	---	---	---	---	---	---	---
K17B SH.2	---	---	---	---	---	---	---	---	---	---	---	---	---
K18A SH.2	---	---	---	---	---	---	---	---	---	---	---	---	---
K18B SH.2	---	---	---	---	---	---	---	---	---	---	---	---	---
K19A SH.2	---	---	---	---	---	---	---	---	---	---	---	---	---
K19B SH.2	---	---	---	---	---	---	---	---	---	---	---	---	---
K20A SH.2	---	---	---	---	---	---	---	---	---	---	---	---	---
K20B SH.2	---	---	---	---	---	---	---	---	---	---	---	---	---
K21 SH.6	C33-K638A-1 SH.5	---	---	---	C33-K638B-1 SH.5	---	---	C33-K638C-1 SH.5	---	---	---	---	---
K22 SH.6	C33-K646-2 SH.5	---	---	---	C33-K656-2 SH.6	---	---	C33-K658-2 SH.6	---	---	---	---	---
K23 SH.6	---	C33-K638A SH.5	---	---	C33-K638B SH.5	---	---	C33-K638C SH.5	---	---	C33-K638D SH.5	C33-K638E SH.5	C33-K638F SH.5
K24 SH.6	---	C33-K638C SH.5	---	---	C33-K638D SH.5	---	---	C33-K646-1 SH.5	---	---	C33-K646-1 SH.5	---	---
K26 SH.6	---	C33-POO1A SH.3	---	---	C33-POO1B SH.3	---	---	C33-POO1C SH.3	---	---	---	---	---
K27 SH.6	---	C33-K656-1 SH.6	---	---	C33-K656-1 SH.6	---	---	C33-K658-1 SH.6	---	---	C33-K658-1 SH.6	---	---
K28 SH.6	C33-K638A-1 SH.5	---	---	---	C33-K638B-1 SH.5	---	---	C33-K638C-1 SH.5	---	---	---	---	---
K29 SH.6	C33-K646-2 SH.5	---	---	---	C33-K656-2 SH.6	---	---	C33-K658-2 SH.6	---	---	---	---	---
K30 SH.6	---	SEE SH.6	---	---	SEE SH.6	---	---	SEE SH.6	---	---	---	SEE SH.6	---
K31A SH.5	---	---	---	---	C33A-R15A SH.5	---	---	C33A-R15B SH.5	---	---	---	---	---
K31B SH.5	---	---	---	---	C33A-R15C SH.5	---	---	C33A-R15D SH.5	---	---	---	---	---
K31C SH.6	---	---	---	---	C33A-R15E SH.5	---	---	C33A-R15F SH.5	---	---	---	---	---
K32 SH.3	---	---	---	---	C33-K168 SH.3	---	---	C33-K168 SH.3	---	---	---	---	---
K32 SH.6	SEE SH.6	---	---	---	ANN SH.2	---	---	---	---	---	---	---	---

FUMP, VALVE AND CONTROL TABULATION

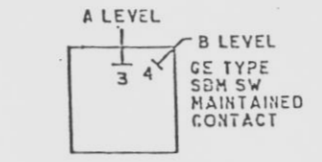
REF DESIG	DEVICE	FUNCTION	SWITCH	INDICATOR LAMPS	LOCATION
				RED GREEN OTHER	MTG LOC SH
---	---	LEVEL A,B	S1	---	H13-P603 4
---	---	CONTROL SIGNAL FAILURE 'C'	---	AMBER	H13-P603 3
---	---	HIGH LEVEL TRIP 'A'	S4A	---	H13-P603 3
---	---	HIGH LEVEL TRIP 'B'	S4B	---	H13-P603 3
---	---	HIGH LEVEL TRIP 'C'	S4C	---	H13-P603 3
---	---	CONTROL SIGNAL FAILURE 'A'	---	AMBER	H13-P603 3
---	---	CONTROL SIGNAL FAILURE 'B'	---	AMBER	H13-P603 3
---	---	SETPOINT SETDOWN	S5	---	H13-P603 2
---	---	FW RUNBACK INHIBIT	S6	---	WHITE H13-P603 6
---	---	ELEMENT SELECT	S2	---	H13-P603 3
---	---	CAVITATION INTLK FLOW LIMITER INIT	---	AMBER	H13-P603 6

INDEX

SH	CONTENT
1	SWITCH DEVELOPEMENT, TABULATION, NOTES, REFERENCE DOCUMENTS
2	POWER DISTRIBUTION, ANN., COMPUTER INPUTS
3	INSTRUMENT LOOPS, READOUTS, TRIP LOCK
4	INSTRUMENT LOOPS, READOUTS
5	INSTRUMENT LOOPS
6	INSTRUMENT LOOPS



- NOTES:
- UNLESS OTHERWISE INDICATED, THE FOLLOWING REFERENCE DESIGNATIONS SHOWN ON THIS DIAGRAM ARE PREFIXED WITH C33A.
 - INTRA-PANEL PROCESS INSTRUMENTATION SIGNAL LEADS SHALL BE BUNDLED AND ROUTED SEPARATELY FROM AC AND DC POWER WIRING. (REF. 6)
 - ALARM AND TRIP CONTACTS ARE SHOWN IN DE-ENERGIZED/ALARM POSITION UNLESS OTHERWISE NOTED.
 - FOR POWER DIST. SEE SH. 2, FIG. 1.
 - FOR POWER DIST. SEE SH. 2, FIG. 2.
 - FOR POWER DIST. SEE SH. 2, FIG. 3.
 - FOR POWER DIST. SEE SH. 2, FIG. 4.
 - IND. LAMPS ARE GE TYPE .ETL6 AND SUPPLIED WITH PANEL.
 - ALARMS ARE TO BE RETRANSMITTED TO BOP COMPUTER PER S4W LOOP DIAG. 2 IHC-3, COMPUTER I/O-ALARM.
- NO RCES INTERCONNECTING WIRE AND CABLE SHALL BE MIXED WITH THE RPS WIRING. WHEN RUNNING WITH RPS LOGIC POWER WIRING IN THE SAME DIVISION RCES POWER WIRING SHALL BE RUN IN GROUNDED METALLIC CONDUIT.
- INSTALL NEXT TO M/A STATIONS ON FEEDWATER CONTROL FRONT PANEL.
- RELAYS K35, K36 AND K37 ARE MOUNTED IN HOFFMAN ENCLOSURE BOX.



CONTACTS (HANDLE END) POS

IT	1	2	2T	1	X
0-1-0	0-1-0	0-1-0	2	X	
3T	3	4	4T	3	X
0-1-0	0-1-0	0-1-0	4	X	
5T	5	6	6T	5	X
0-1-0	0-1-0	0-1-0	6	X	
7T	7	8	8T	7	X
0-1-0	0-1-0	0-1-0	8	X	

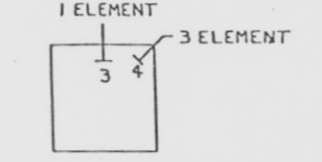
SWITCH DESIG CONT SH NO

---	1	4
---	2	4
---	3	4
---	4	4
---	5	4
---	6	---
---	7	---
---	8	4



SWITCH DESIG CONT SH NO

---	1	3
---	2	3
---	3	---
---	4	---



CONTACTS (HANDLE ENDS) POS

IT	1	2	2T	1	X
0-1-0	0-1-0	0-1-0	2	X	
3T	3	4	4T	3	X
0-1-0	0-1-0	0-1-0	4	X	
5T	5	6	6T	5	X
0-1-0	0-1-0	0-1-0	6	X	
7T	7	8	8T	7	X
0-1-0	0-1-0	0-1-0	8	X	

SWITCH DESIG CONT SH NO

---	1	3
---	2	3
---	3	---
---	4	---

SWITCH DESIG CONT SH NO

S4A (RESET)	1-2	SP
S4B (RESET)	3-4	3
S4B (RESET)	1-2	SP
S4C (RESET)	3-4	3
S4C (RESET)	1-2	SP
S5	1-2	2
S5	3-4	SP

MATCH ARROW TABULATION

MATCH ARROW LETTER	SHEET	LOCATION	ZONE
PA	G	JZ	
PB	G	JZ	
PC	G	JZ	
PD	G	JZ	
PE	G	JZ	
PF	G	JZ	
PG	G	KZ	
PH	G	KZ	
PJ	G	KZ	
PK	G	KZ	
PL	G	LZ	
PM	G	LZ	

GE TYPE CR 2820 RELAY TABULATION (TD PAC FORM)

L1	L2	1A1	1A2	1B1	1B2	2A1	2A2	2B1	2B2	1A1T	1A2T	1B1T	1B2T	2A1T	2A2T	2B1T	2B2T	
K10 SH.2	---	---	---	---	---	---	---	---	---	C33-K653 SH.5	---	C33-K653 SH.5	---	C33-K626A SH.2	---	---	---	---

GE TYPE HEADIA HAND RESET RELAY TABULATION (SHOWN IN RESET POSITION)

9	10	8	7	1	1C	2	2C	3	3C	4	4C	5	5C	6	6C
K8A SH.3	---	---	---	---	---	---	---	---	---	C33-FOO1A SH.3	---	---	---	---	---
K8B SH.3	---	---	---	---	---	---	---	---	---	C33-FOO1B SH.3	---	---	---	---	---
K8C SH.3	---	---	---	---	---	---	---	---	---	C33-FOO1C SH.3	---	---	---	---	---

AGASTAT TYPE TD RELAY TABULATION

L1	L2	1	5	3	4	NO	C	NC
K25 SH.6	---	---	---	---	---	---	---	---
K35B SH.3	---	---	---	---	---	---	---	---
K40A SH.3	---	---	---	---	---	---	---	---
K40B SH.3	---	---	---	---	---	---	---	---
K40C SH.3	---	---	---	---	---	---	---	---

INFORMATION ONLY

NY NIAGARA MOHAWK
ELEMNTARY DIAGRAM
FEEDWATER CONTROL SYSTEM

NO	DATE	BY	DESCRIPTION OF REVISION AND M.O.	CHK	APP	NO	DATE	BY	DESCRIPTION OF REVISION AND M.O.	CHK	APP
1	11/14/73	---	INCORP FDDR K01-6194, REV. 0, FDDR K01-6201, REV. 0, EDC 2E00188 (REF FDDR K01-6200, REV. 5) EDC 2E00479A (REF FDDR K01-6353, REV. 0) EDC 2E00480A (REF FDDR K01-6362, REV. 0) EDC 2E00586C (REF FDDR K01-6373, REV. 1) (REF MOD. PN2Y87MX259)	---	---	3	11/14/73	---	REISSUED PER CHN 90.3035	---	---
2	---	---	---	---	---	2	---	---	INCORP. EDC 2E00427 (REF. FDDR K01-6354, REV. 0)	---	---
3	---	---	---	---	---	---	---	---	ORIGINAL ISSUE - INCORP FDDR K01-6016, REV. 0 B. I.	---	---

9305700197 D

SI APERTURE CARD

SEE DCIS LISTING

DATE: 12/77

BY: G.E. MASTER DING (8071607Y, SH.1)

LINE CODES: THIS SHEET NONE LAST USED: 88

NY NIAGARA MOHAWK
ELEMNTARY DIAGRAM
FEEDWATER CONTROL SYSTEM

0007.222-001-003