

REFERENCES:

- EE-3DU -3
- EE-3DN -2
- EE-4Y -1
- EE-11T -1
- EE-11M -2
- FSK-26-3D -4
- 0007.510-001-216 -B
- 0007.510-001-212 -A
- 0007.520-001-318 -F
- 0007.520-001-334 -G
- 0007.520-001-402 -H
- 0007.520-001-403 -E
- 0007.520-001-405 -F
- E&DCR-C43310
- 0001.764-001-021 -E
- 0001.764-001-022 -E
- 0001.764-001-023 -D

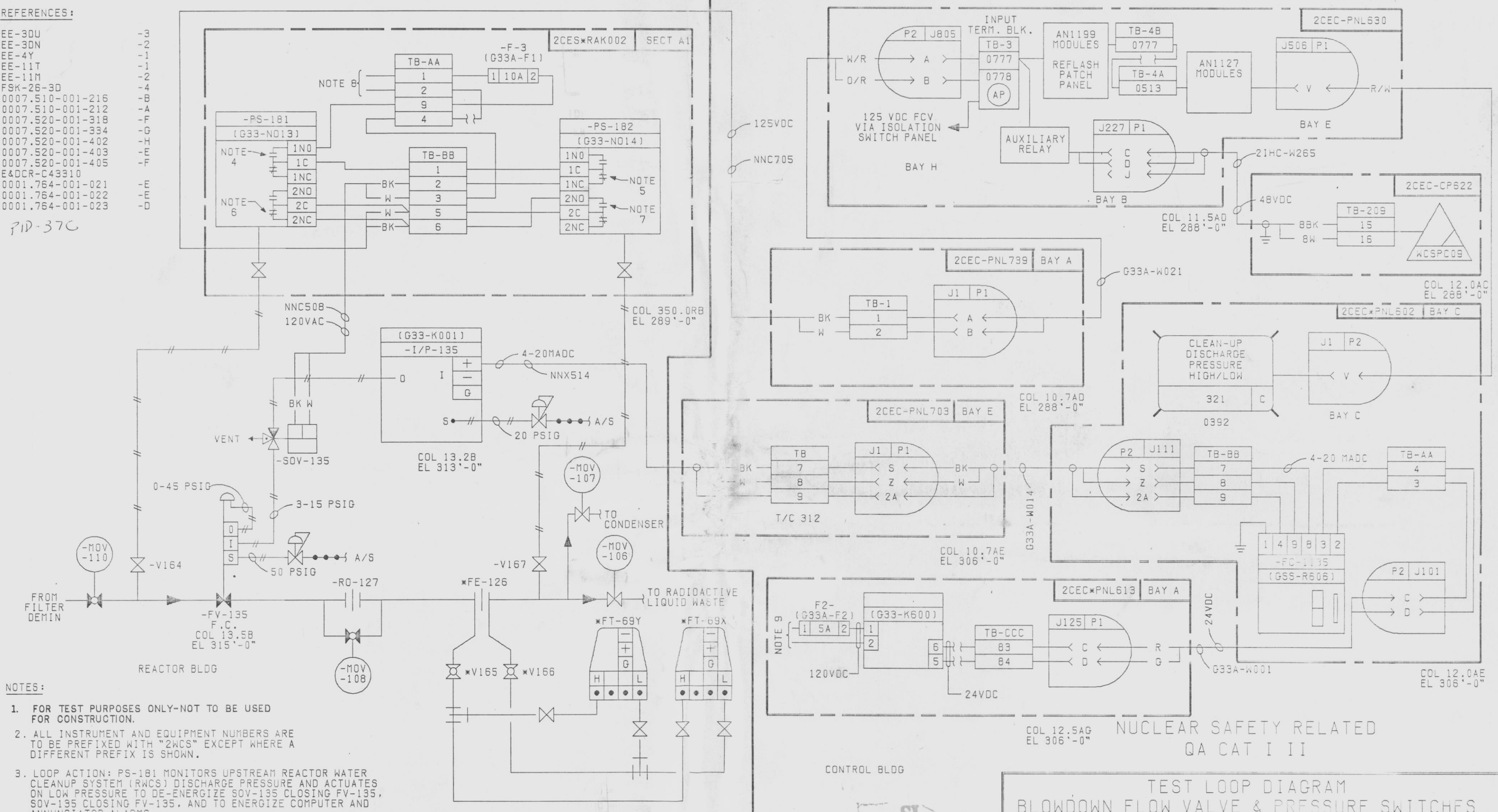
PID-37C

NOTES:

1. FOR TEST PURPOSES ONLY-NOT TO BE USED FOR CONSTRUCTION.
2. ALL INSTRUMENT AND EQUIPMENT NUMBERS ARE TO BE PREFIXED WITH "2WCS" EXCEPT WHERE A DIFFERENT PREFIX IS SHOWN.
3. LOOP ACTION: PS-181 MONITORS UPSTREAM REACTOR WATER CLEANUP SYSTEM (RWCS) DISCHARGE PRESSURE AND ACTUATES ON LOW PRESSURE TO DE-ENERGIZE SOV-135 CLOSING FV-135, SOV-135 CLOSING FV-135, AND TO ENERGIZE COMPUTER AND ANNUNCIATOR ALARMS.
PS-182 MONITORS DOWNSTREAM RWCS DISCHARGE PRESSURE AND ACTUATES ON HIGH PRESSURE TO DE-ENERGIZE SOV-135 CLOSING FV-135, AND TO ENERGIZE COMPUTER AND ANNUNCIATOR ALARMS.
FC-1135 PROVIDES A CONTROL SIGNAL TO POSITION FV-135 VIA I/P-135 WHEN DISCHARGE PRESSURE IS NOT LOW OR HIGH.
4. CONTACT OPENS ON LOW PRESSURE TO CLOSE FV-135.
5. CONTACT OPENS ON HIGH PRESSURE TO CLOSE FV-135.
6. CONTACT CLOSURES ON LOW PRESSURE TO ENERGIZE COMPUTER AND ANNUNCIATOR ALARMS.
7. CONTACT CLOSURES ON HIGH PRESSURE TO ENERGIZE COMPUTER AND ANNUNCIATOR ALARMS.

8. 120VAC DISTRIBUTION FROM 2SCA-PNL201, CKT#20.
9. 120VAC DISTRIBUTION FROM 2VBS-PNLB102, CKT#3.
10. VENDOR IDENTIFICATIONS ARE SHOWN IN PARENTHESES.

DATE	DATE	DATE	DATE	DATE
4	3	2	1	0
PREPARED	PREPARED	PREPARED	PREPARED	PREPARED
APPROVED	APPROVED	APPROVED	APPROVED	APPROVED




NUCLEAR SAFETY RELATED
QA CAT I II

TEST LOOP DIAGRAM
BLOWDOWN FLOW VALVE & PRESSURE SWITCHES
2WCS-FV-135, PS-181, PS-182

NINE MILE POINT NUCLEAR STATION-UNIT 2
NIAGARA MOHAWK POWER CORPORATION

STONE & WEBSTER ENGINEERING CORPORATION



12177-TL2WCS-071

INFORMATION ONLY

9305100137 D