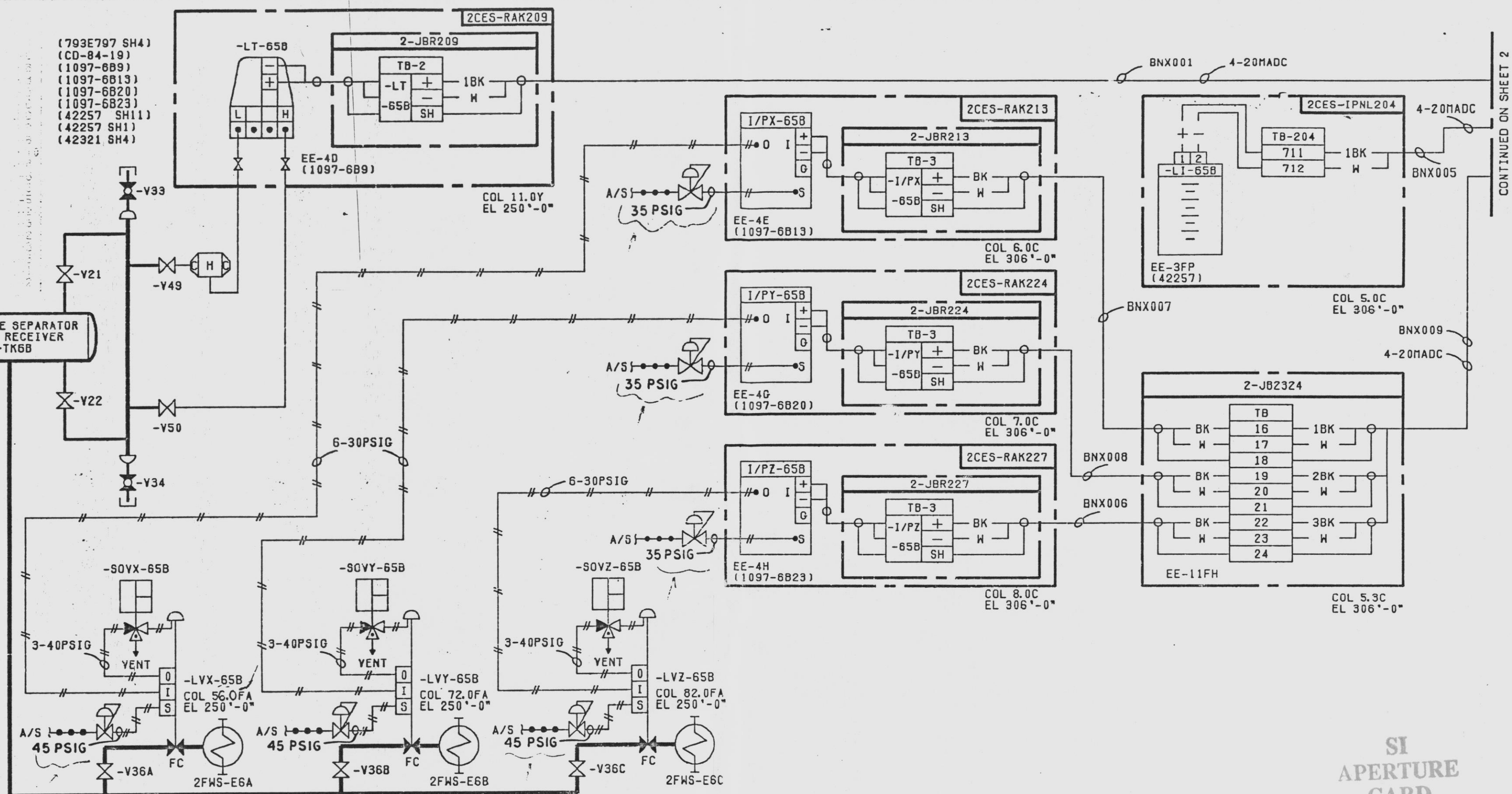


FOR INFORMATION ONLY

REFERENCES:

- 0007.520-001-541 (793E797 SH4)
- 0007.159-451-353 (CD-84-19)
- 0007.510-414-113 (1097-689)
- 0007.510-414-111 (1097-6813)
- 0007.510-414-110 (1097-6820)
- 0007.510-414-109 (1097-6823)
- 0007.510-979-518 (42257 SH11)
- 0007.510-979-526 (42257 SH1)
- 0007.510-979-671 (42321 SH4)
- FSK-32-8B
- ZDSR-065
- LSK-32-6A
- EE-4BA
- EE-3AK
- EE-4D
- EE-3K
- EE-4E
- EE-4G
- EE-4H
- EE-3FP
- EE-11FH
- E4DCR-P21366A
- E4DCR-C03461



NOTES:

- FOR TEST PURPOSES ONLY-NOT TO BE USED FOR CONSTRUCTION.
- ALL INSTRUMENT AND EQUIPMENT NUMBERS ARE TO BE PREFIXED WITH "ZDSR" EXCEPT WHERE A DIFFERENT PREFIX IS SHOWN.
- LOOP ACTION: LT- 65B MONITORS MOISTURE SEPARATOR DRAIN RECEIVER TK6B WATER LEVEL AND PROVIDES LEVEL SIGNALS TO LC- 65B, AND THE COMPUTER VIA PHRS- 65B, AND TO LI- 65B VIA PHRS- 65B AND E/IW- 65B. LC- 65B COMPARES LT- 65B LEVEL SIGNAL TO AN INTERNAL SETPOINT AND PROVIDES AN ERROR SIGNAL TO MODULATE VALVES LX- 65B, LY- 65B, AND LVZ- 65B. LX- 65B WILL BE MODULATED BY EITHER LC- 65B OR LIKX- 65B (AUTO MANUAL CONTROL STATION) VIA E/IY- 65B AND I/PX- 65B. IF SOVX- 65B IS ENERGIZED (SEE TL2DSR-029), LVY- 65B WILL BE MODULATED BY EITHER LC- 65B OR LIKY- 65B VIA E/IY- 65B AND I/PY- 65B IF SOVY- 65B IS ENERGIZED (SEE TL2DSR-031), LVZ- 65B WILL BE MODULATED BY EITHER LC- 65B OR LIKZ- 65B VIA E/IZ- 65B AND I/PZ- 65B IF SOVZ- 65B IS ENERGIZED (SEE TL2DSR-033). WHEN LIKX- 65B, LIKY- 65B OR LIKZ- 65B IS IN THE MANUAL POSITION IT WILL BE USED TO CONTROL ITS RESPECTIVE CONTROL VALVE. IF LIKX- 65B, LIKY- 65B OR LIKZ- 65B IS IN THE AUTO POSITION, THEN THE RESPECTIVE CONTROL VALVE WILL BE CONTROLLED BY LC- 65B, VIA ITS RESPECTIVE E/I AND I/P.

TURBINE BLOG

SI APERTURE CARD

QA CAT II

TEST LOOP DIAGRAM
 ZDSR-TK6B NORM WTR LVL DR CONTROL
 ZDSR-LT-65B

NINE MILE POINT NUCLEAR STATION-UNIT 2
 NIAGARA MOHAWK POWER CORPORATION

STONE & WEBSTER ENGINEERING CORPORATION

DATE PREPARED	DATE APPROVED	DATE PREPARED	DATE APPROVED	DATE PREPARED	DATE APPROVED	DATE PREPARED	DATE APPROVED
4	3	2	1	0	2	0	2

SHEET 1 OF 2
 12177-TL2DSR-027

9305070165

FOR INFORMATION ONLY