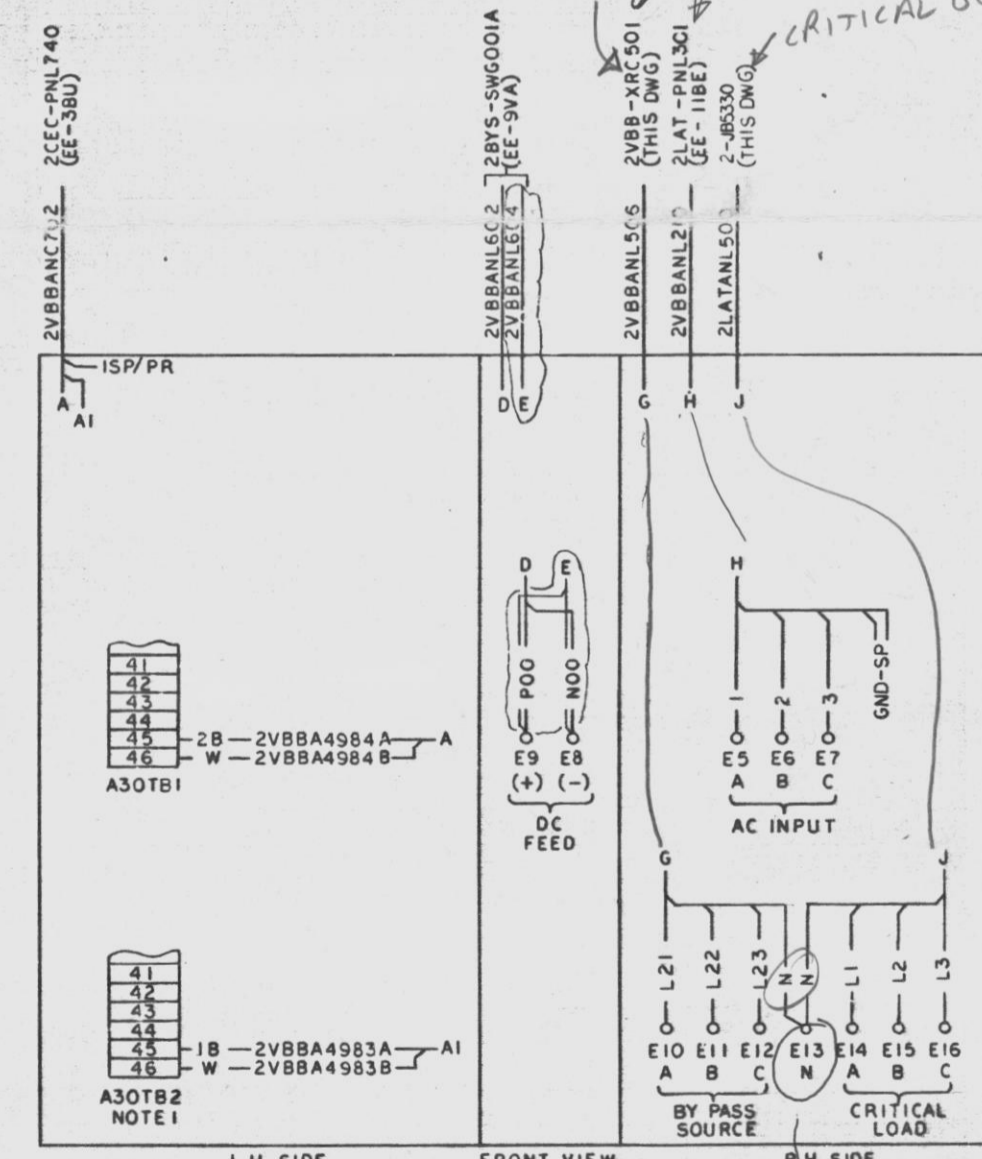
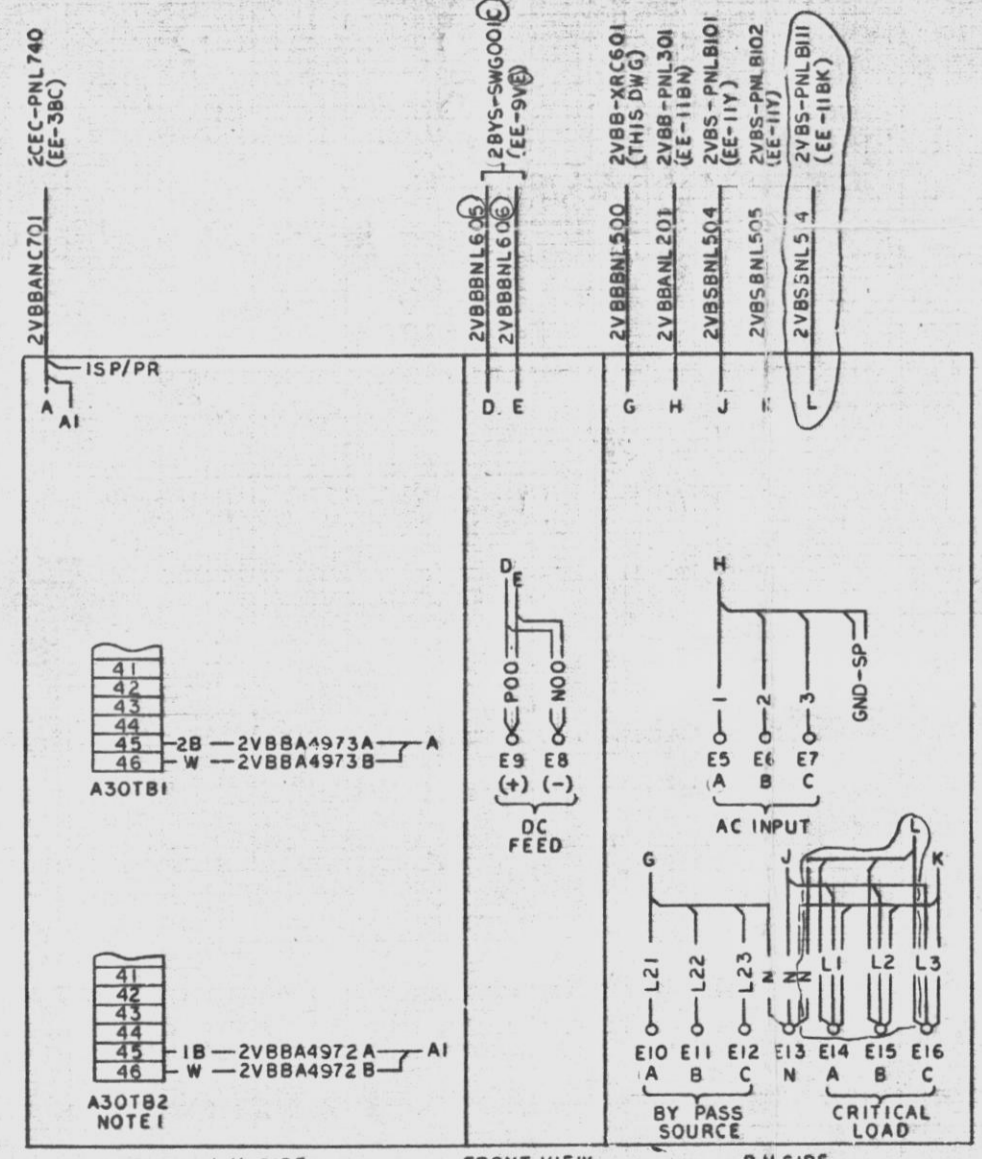
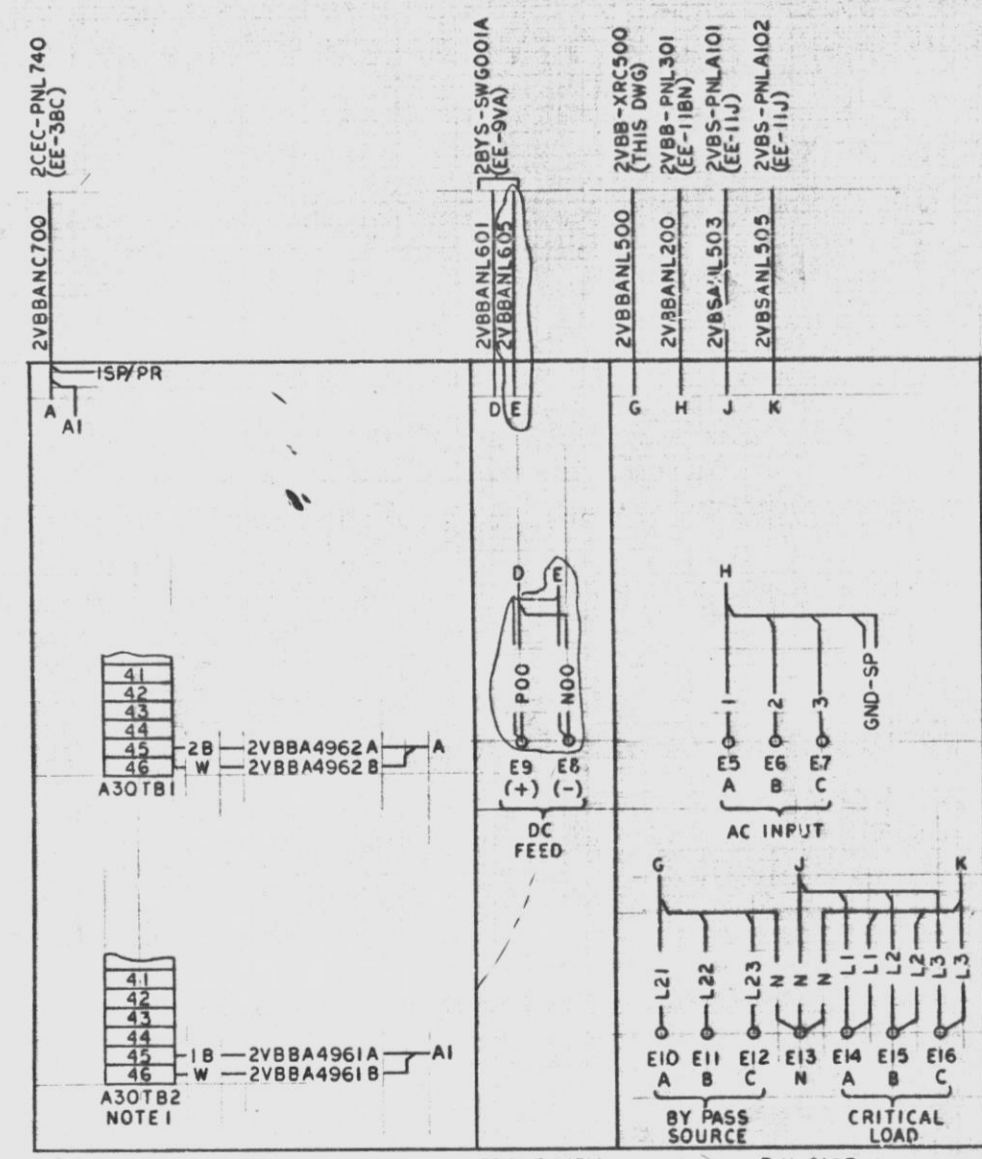
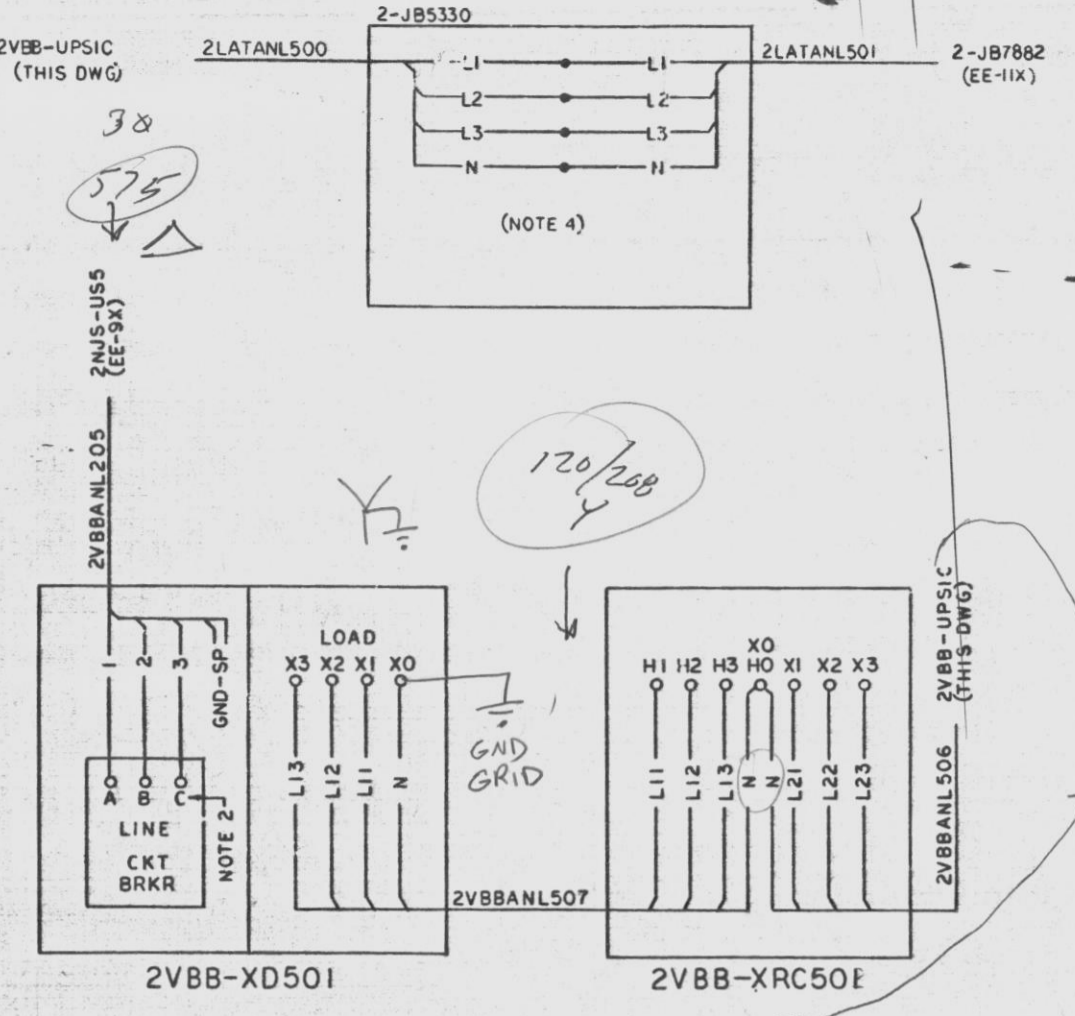
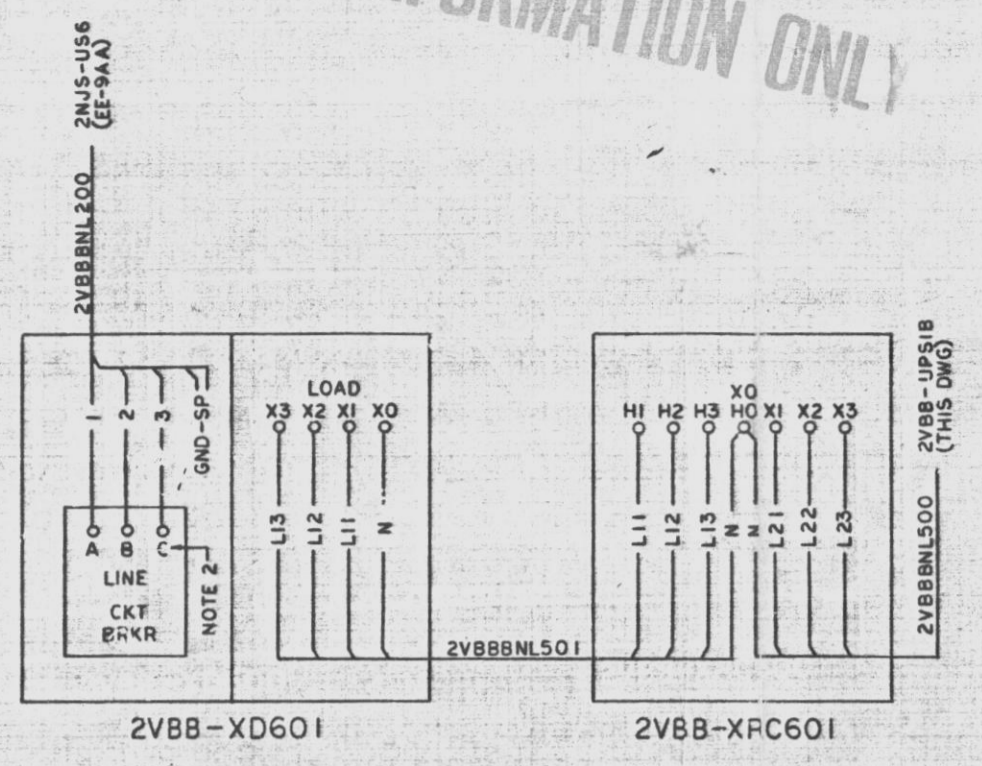
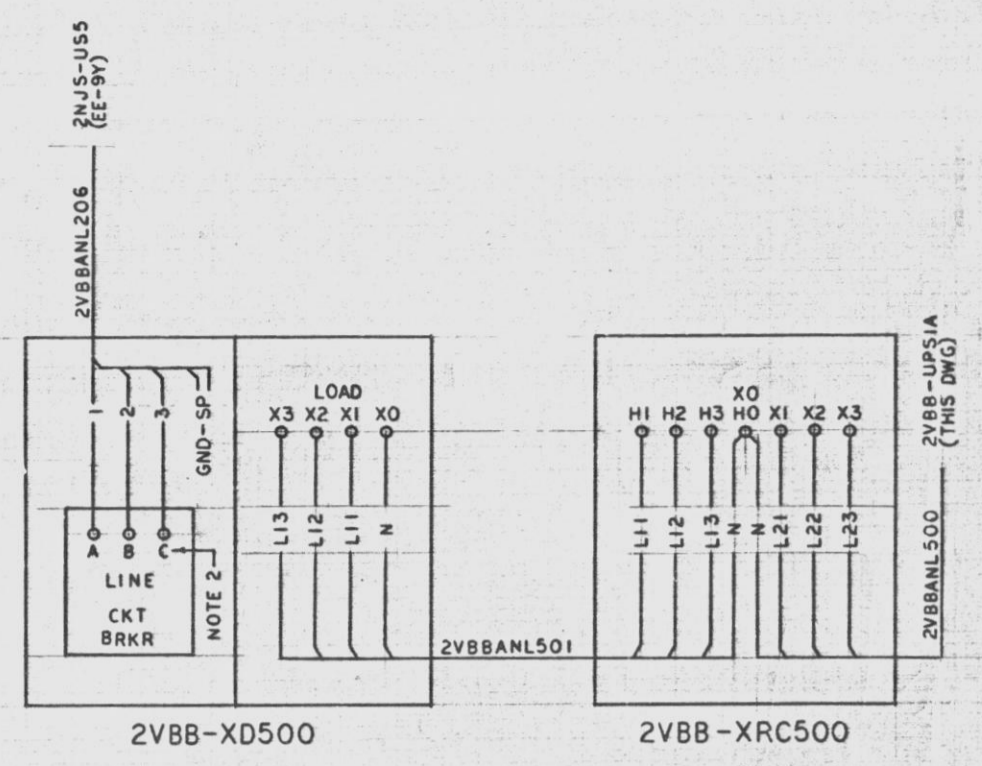


1217-EE-11DA-3

FOR INFORMATION ONLY



- NOTES:
1. TERMINAL BOARDS & STUDS SHOWN DIAGRAMMATICALLY.
 2. FIELD TO VERIFY PHASING
 3. ALL GROUND WIRES NOT CONNECTED TO BE COILED & TAPED.
 4. FIELD TO MAKE REDUCING SPLICE FROM 750KCM TO 350KCM.

- REFERENCES:
- SCHEMATIC DIAGRAM UPS
 - OUTLINE-UPS
 - TRANSFORMER
 - REGULATOR
 - ELECTRICAL WIRE & CABLE NOTES
- ESB-11071102
S&W-0001.560-229-008
ESB-110714010
S&W-0001.560-229-005
ESB-149958110
S&W-0001.560-229-001
ESB-163901018
S&W-0001.560-229-003
STD ME-1-7-3 & ME-1-8-2
- ALM NO. 4961, 4962
4972, 4973
4983, 4984
- ESK NO. 10IHA517
517
518

SI APERTURE CARD



APPROVED: Thomas L. Ott, LICENSED PROFESSIONAL ENGINEER, NO. 57387, STATE OF NEW YORK, ALTERATION EXCEPT BY A LICENSED PROFESSIONAL ENGINEER IS ILLEGAL.

QA CAT II

EXTERNAL CONNECTION DIAGRAM UNINTERRUPTIBLE POWER SUPPLY 2VBB-UPSIA, IB&IC NINE MILE POINT NUCLEAR STATION - UNIT 2 NIAGARA MOHAWK POWER CORPORATION STONE & WEBSTER ENGINEERING CORPORATION CHEMUNY HILL, N.Y.

THE INFORMATION ON THIS DRAWING MAY NOT BE COPIED OR USED FOR OTHER THAN THE CONSTRUCTION, MAINTENANCE OR REPAIR OF THE PLANT FACILITY DESCRIBED IN THE TITLE BLOCK.

ISSUED FOR CONSTRUCTION	12177-EE-11DA-3
DESIGNED BY T. PINCUS	CHECKED BY G. NOLAN
DATE 01/25/74	DATE 01/25/74
SCALE	AS SHOWN
NO. OF SHEETS	4
TOTAL NO. OF SHEETS	32E

NO.	DESCRIPTION	CHKD.	DATE	NO.	DESCRIPTION	CHKD.	DATE
1	ISSUED FOR CONSTRUCTION			1	ISSUED FOR CONSTRUCTION		
2	SEE RECORD OF DRAWING CHANGES BCE-11DA-2			2	SEE RECORD OF DRAWING CHANGES BCE-11DA-2		
3	SEE RECORD OF DRAWING CHANGES 12177-BCE-11DA-3			3	SEE RECORD OF DRAWING CHANGES 12177-BCE-11DA-3		

9305070126

07-610-91

D 9305070126