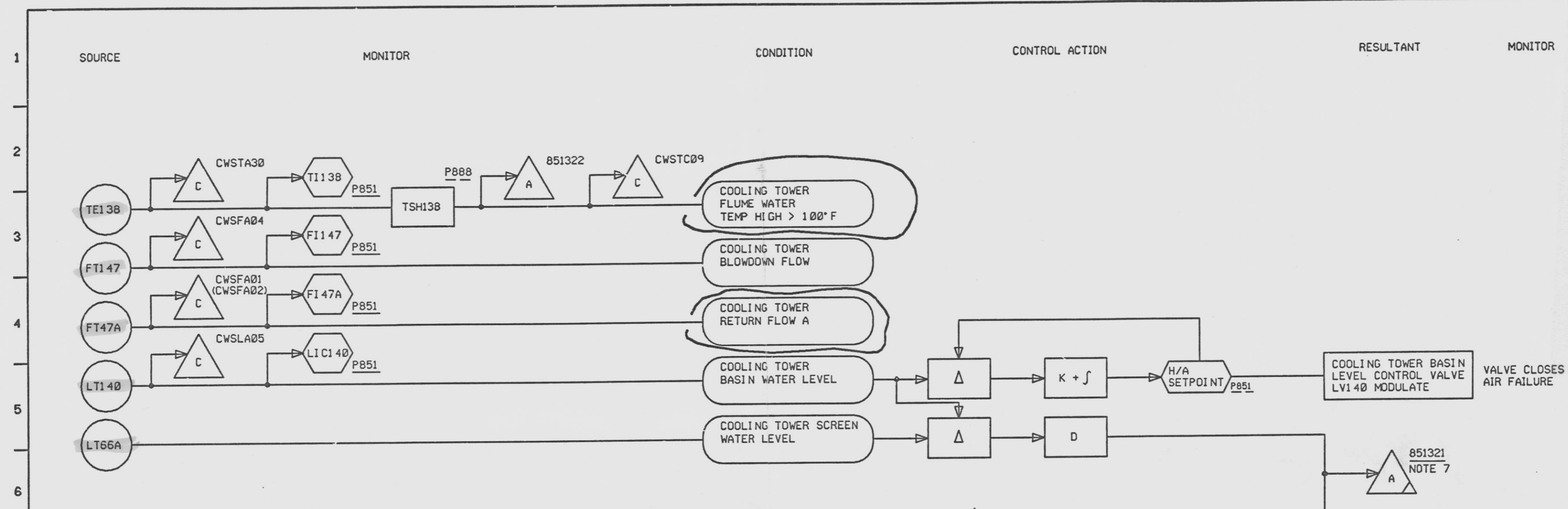


Affected Doc
 Change Document
 Date
 15
 Rev
 Iss Shts
 Incorp
 In Rev
 Description
 Rev
 Iss Shts
 Incorp
 In Rev
 Description
 REPORT DATE: 08-21-91
 Par: IDX Baseline
 Op: Rel Chg Document
 Ac: Cmts Id

PAGE 1
 NINE MILE POINT UNIT 2- NIAGARA MOHAWK POWER CORP
 DOCUMENT CONTROL INFORMATION SYSTEM
 CHANGE DOCUMENTS : OPEN POSTING REPORT
 REPORT DATE: 08-21-91



- NOTES:
1. ALL INSTRUMENT AND EQUIPMENT NUMBERS TO BE PREFIXED WITH *2CWS- EXCEPT WHERE A DIFFERENT PREFIX IS SHOWN.
 2. *INDICATES SUPPLIED BY VICTOREEN.
 3. COMMON ALARM INPUT FOR THE FOLLOWING CONDITIONS: RADIATION HIGH, RADIATION ALERT, CHANNEL FAILURE, POWER FAILURE, MONITOR INOPERABLE/BYPASSED.
 4. COMMON ANNUNCIATOR WINDOW FOR *LIQUID PROCESS RADIATION HIGH/TROUBLE*.
 5. LOGIC FOR FLOW METER FT47A IS SHOWN. LOGIC FOR FLOW METER FT47B IS SIMILAR.
 6. LOGIC FOR COOLING TOWER SCREEN WATER LEVEL LT66A IS SHOWN. LOGIC FOR COOLING TOWER SCREEN WATER LEVEL LT66B IS SIMILAR.
 7. COMMON ANNUNCIATOR FOR CIRCULATING WATER COOLING TOWER TROUBLE.

SI
 APERTURE
 CARD

NOTE: THIS DRAWING WAS CREATED USING AUTOCAD. ANY CHANGES TO THIS DRAWING MUST BE MADE TO THE ORIGINAL FILE. DO NOT MAKE MANUAL CHANGES.

SAR FIGURE 10.4-8
 NUCLEAR NON SAFETY RELATED

SETPOINTS SHOWN ON LOGIC DIAGRAMS ARE FOR LOGIC CLARIFICATION ONLY AND MAY BE ONLY APPROXIMATIONS OF THE ACTUAL PROCESS SETPOINT. REFER TO SETPOINT DATA SHEETS FOR ACTUAL PROCESS SETPOINTS.

APP		AKJ	DATE	11/20/89
DES		AKJ	DATE	11/20/89
APP		AKJ	DATE	11/20/89
DES		AKJ	DATE	11/20/89
APP		AKJ	DATE	11/20/89
DES		AKJ	DATE	11/20/89
APP		AKJ	DATE	11/20/89
DES		AKJ	DATE	11/20/89
APP		AKJ	DATE	11/20/89
DES		AKJ	DATE	11/20/89
APP		AKJ	DATE	11/20/89
DES		AKJ	DATE	11/20/89
APP		AKJ	DATE	11/20/89
DES		AKJ	DATE	11/20/89
APP		AKJ	DATE	11/20/89
DES		AKJ	DATE	11/20/89
APP		AKJ	DATE	11/20/89
DES		AKJ	DATE	11/20/89

REV	DATE	BY	HF	DESCRIPTION	CK	APP.	REV	DATE	BY	HF	DESCRIPTION	CK	APP.	REV	DATE	BY	HF	DESCRIPTION	CK	APP.	REV	DATE	BY	HF	DESCRIPTION	CK	APP.

9305060293 9305060293 D