

# OPERATIONS DEPARTMENT INSTRUCTION

N2-ODI-7.02  
Rev 00

## SHIFT TECHNICAL ADVISOR FUNCTIONS

Approved: \_\_\_\_\_

**FOR INFORMATION ONLY**

### 1.0 PURPOSE

This ODI identifies and delineates the duties and responsibilities of the Shift Technical Advisor (STA) position.

### 2.0 REFERENCES

- 2.1 NUREG-0737, Clarification of TMI Action Plant Requirement, Section I.A.1.1, Shift Technical Advisor
- 2.2 INPO Document, Nuclear Power Plant Shift Technical Advisor, (GPG-01) Revision 1, April 1982
- 2.3 Unit 2 Technical Specification, Sections 6.2.2 and 6.2.4
- 2.4 N2-ODI-1.08, Operations Policy for Emergency Procedures
- 2.5 N2-ODI-7.01, Reactivity Management Program
- 2.6 N2-REI-01, Shift Technical Advisor Qualification Program
- 2.7 NMPC Job Description - Shift Technical Advisor, Nine Mile Point, Nuclear Generation

N2-ODI-7.02 -1 April 1991

9305060039 911031  
PDR ADDCK 05000410  
S PDR

4e8

Handwritten marks and numbers in the top right corner.

Handwritten text, possibly a signature or date, slanted across the page.

Vertical handwritten marks or characters at the bottom center.

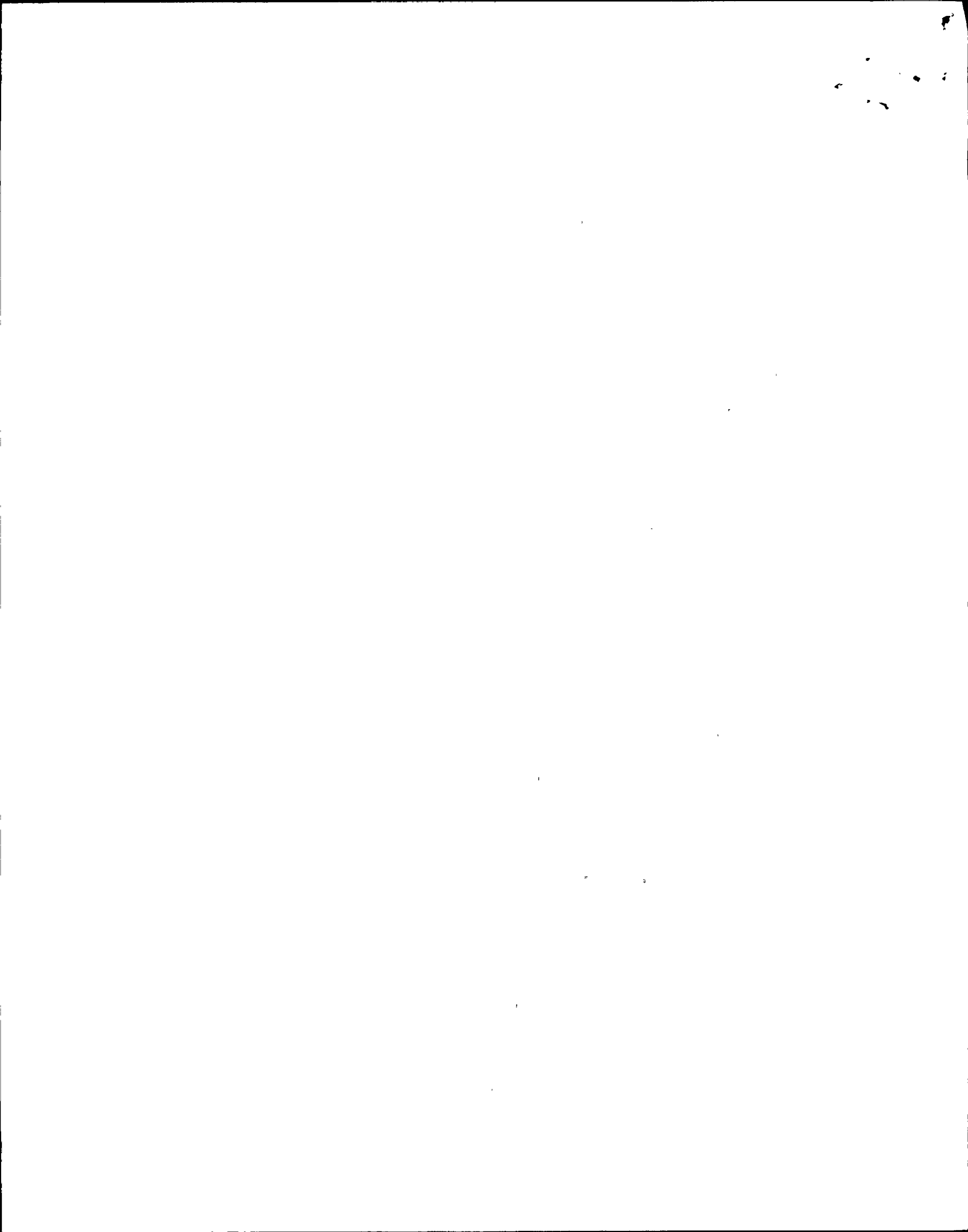
3.0

DEFINITIONS

Shift Technical Advisor (STA) - That position at a nuclear power plant established to evaluate plant conditions and provide advice to the Station Shift Supervisor during plant transients and emergencies. Inherent in this function is the detection and reporting of potential safety problems. The STA reports to the Supervisor Reactor Engineering. While on shift, the STA also reports functionally to the Station Shift Supervisor.

4.0 PRIMARY RESPONSIBILITIES

- 4.1 The Supervisor Reactor Engineering is responsible for developing and implementing the STA program. Included in this responsibility are the following:
  - 4.1.1 Assisting the Nuclear Training Department in establishing the STA initial and continuing training program.
  - 4.1.2 Identifying STA candidates based on the criteria of reference 2.1, NUREG 0737.
  - 4.1.3 Qualifying individuals to perform STA duties.
  - 4.1.4 Developing a STA shift schedule that provides STA support.
  - 4.1.5 Providing direction to on duty STA's.
  - 4.1.6 Resolving administrative and training problems associated with the STA program.
- 4.2 The Supervisor Reactor Engineering responsibilities are defined in reference 2.6, N2-REI-01, STA Qualification Program, Section 4.1.
- 4.3 The Nuclear Training Department is responsible for providing training to STA candidates to support STA qualification and requalification, and for documenting this training in accordance with training procedures.
- 4.4 The Shift Technical Advisor is responsible for:
  - 4.4.1 Providing advanced technical assistance to the operating shift complement. Specific responsibilities are detailed in the body of this ODI.
  - 4.4.2 Identifying any additional training which he considers to be important for obtaining or maintaining their qualification to adequately perform their duties.

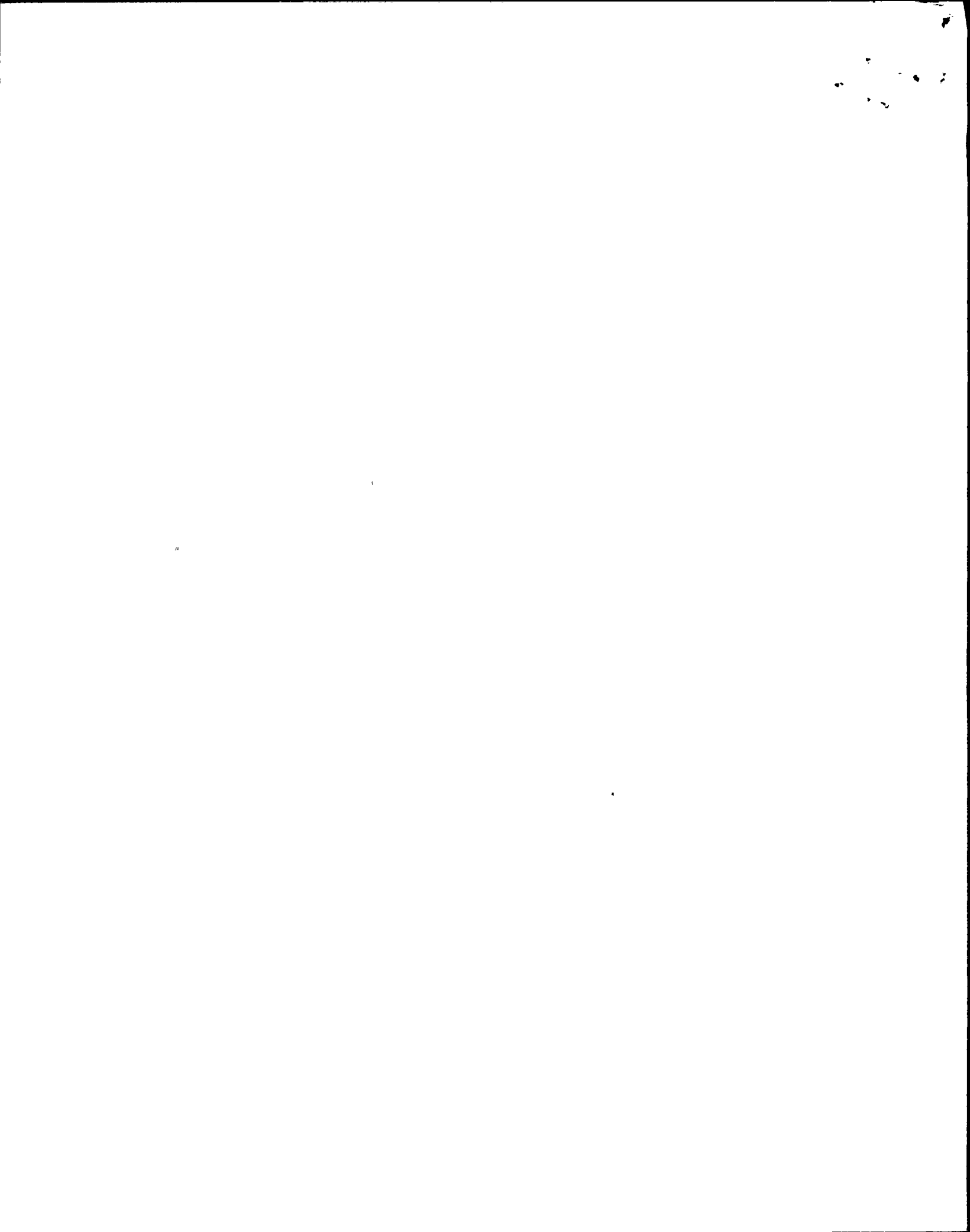


5.0 QUALIFICATIONS

STA qualifications are listed in reference 2.6, N2-REI-01 STA Qualification Program, Section 5.0 and Attachments 1 through 3.

6.0 DUTIES AND RESPONSIBILITIES

- 6.1\* During transient or emergency operating conditions, the STA shall perform the duties and responsibilities stated in reference 2.4, N2-ODI-1.08, Operations Policy for Emergency Procedures, Section 5.0.
- 6.2 While performing Reactor Engineering functions, the STA shall perform the duties and responsibilities stated in reference 2.5, N2-ODI-7.01, Reactivity Management Program, Sections 5.1 and 5.2.
- 6.3 Other duties that the STA shall perform include:
- 6.3.1 Participate in normal shift relief turnovers.
- 6.3.2 Conduct a STA relief turnover.
- 6.3.3 Review shift notes from Reactor Engineering.
- 6.3.4 Review shift logs, notes, and memos.
- 6.3.5 Review the plant status and planned shift activities with the Station Shift Supervisor.
- 6.3.6 Be cognizant of plant status and equipment status during assigned shift.
- 6.3.7\* Maintain independence from normal plant operations as necessary to make objective evaluation of plant operations and to advise or assist the Station Shift Supervisor in methods of correcting conditions that may compromise the safety of operations.
- 6.3.8\* Remain within contact of the Control Room by Gaitronics, telephone, pager, etc. and physically be within 10 minutes of the Control Room to provide appropriate technical assistance to the normal shift compliment.
- 6.3.9 Provide technical assistance in trouble shooting system malfunctions until the System Engineer is available.
- 6.3.10 Maintain knowledge of modifications to plant safety-related equipment.
- 6.3.11 Participate in STA continuing training.
- 6.3.12 Participate in shift requalification training.
- 6.3.13 Provide assistance in preparing Scram Reports and Licensee Event Reports for those events occurring during the shift.



- 6.3.14 Provide on-shift technical support for OEA report reviews and investigations as necessary.
  - 6.3.15 Assist Station Shift Supervisor in fulfilling N2-ODI-5.15, SSS and ASSS Plant Tour Guide responsibilities.
  - 6.3.16 Assist shift personnel with the use of the GETARS computer system as necessary.
  - 6.3.17 Participate in N2-ODI-5.10, EOP Ongoing Evaluation Program.
  - 6.3.18 Participate in AP-3.3.1, Site ALARA Program.
  - 6.3.19 Assist system experts with OP and OSP reviews.
  - 6.3.20 Provide technical assistance to on shift operations personnel during operation and testing of various plant systems.
- \* Not applicable until the required Technical Specification change is implemented.

#### 7.0 RECORDS

Training records for each STA shall be maintained as per N2-REI-01, Section 6.0.

