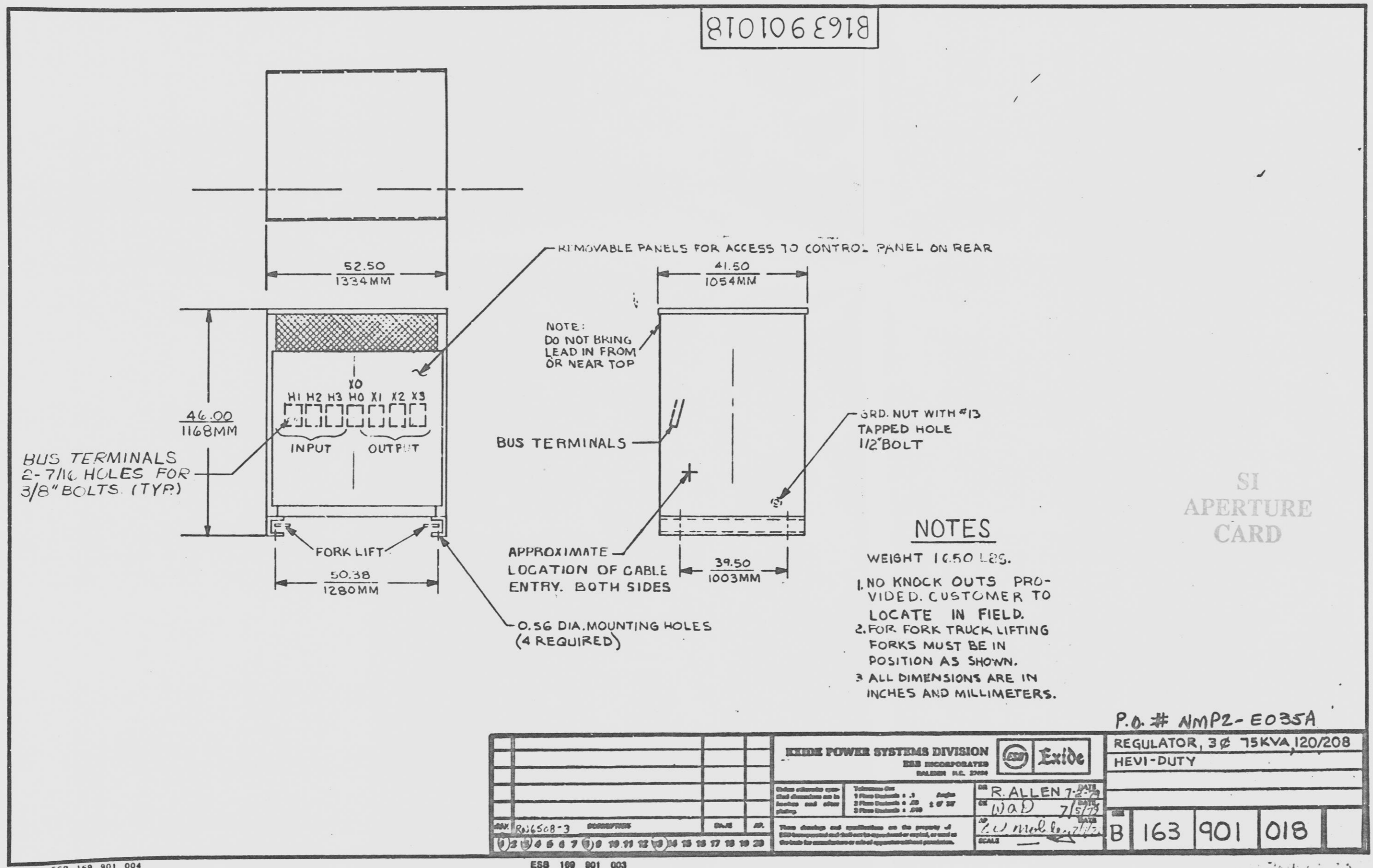


810106918



NOTES

- 1. NO KNOCK OUTS PROVIDED. CUSTOMER TO LOCATE IN FIELD.
- 2. FOR FORK TRUCK LIFTING FORKS MUST BE IN POSITION AS SHOWN.
- 3. ALL DIMENSIONS ARE IN INCHES AND MILLIMETERS.

SI APERTURE CARD

EXIDE POWER SYSTEMS DIVISION EXIDE INCORPORATED SALES R.L. 2700			REGULATOR, 3φ 75KVA, 120/208 HEVI-DUTY
MAX. REV. 163-3 DESCRIPTION DATE AP.	THESE DRAWINGS AND SPECIFICATIONS ARE THE PROPERTY OF EXIDE INCORPORATED AND ARE NOT TO BE REPRODUCED OR COPIED, OR USED IN ANY MANNER WITHOUT THE WRITTEN PERMISSION OF EXIDE INCORPORATED.	DR. R. ALLEN 7/27/83 CK. WAD 7/27/83 JC. [unclear] 7/27/83 SCALE	P.O. # NMP2-E035A B 163 901 018

STONE & WEBSTER ENGINEERING CORPORATION NINE MILE POINT NUCLEAR STATION - UNIT 2 NIAGARA MOHAWK POWER CORPORATION J. O. 12177			
<input checked="" type="checkbox"/> INSTRUCTIONS TO SUPPLIER (E2)			
<input checked="" type="checkbox"/> APPROVED		AS DEFINED IN SPECIFICATION	
<input type="checkbox"/> APPROVED AS REVISED			
<input type="checkbox"/> RELEASED FOR FABRICATION			
<input type="checkbox"/> RELEASED FOR MATERIAL PURCHASE			
SUPPLIER TO RESUBMIT	QTY	<input type="checkbox"/> REVISED PRINTS	
		<input type="checkbox"/> REVISED MICROFILM APERTURE CARDS	
		<input type="checkbox"/> FOR REVIEW	
		<input checked="" type="checkbox"/> FOR RECORD	
<input type="checkbox"/> NONE REQUIRED			
NOTES:			
(E1) <input checked="" type="checkbox"/> FOR INFORMATION ONLY RETURN TO SUPPLIER NOT REQUIRED			
INSTRUCTIONS TO DESIGN (CIRCLE) (E1)			
DESIGN ENGINEER'S DATE STAMP (D) OUT: N/A DATED AUG 23 1983 G. MODI			
INITIALS OF SELECTED REVIEWERS N/A			
RESPONSIBLE ENGINEER'S DATE STAMP (E2) DATED AUG 23 1983 G. MODI			
SUPERSEDES S & W FILE NO. (E1) (25-34) (35-38)			
3 REMARKS (C) (LIMIT TO 22 CHARACTERS & BLANKS) (53-74) N/A			
S & W EQUIP. I.D. CODE (E1) (25-36)		AREA DESIGNATION CODES (E1) (75-80)	
2 VIBB-UPIS		4	
MFR'S. DWG. NO. (C) (LIMIT TO 24 CHARACTERS & BLANKS) (37-60) 163901018			
MFR'S. NAME (C) (LIMIT TO 20 CHARACTERS & BLANKS) (61-80) EXIDE POWER			
DATE (C)	MONTH (C)	DAY (C)	YEAR (C)
08	22	83	
DWG. TYPE (E1)		MAX. DAYS IN DESIGN (E1)	
E		010	
1 FUNCTIONAL TITLE (E1) (LIMIT TO 44 CHARACTERS & BLANKS) (87-90) REGULATOR, 3φ, 75 KVA			
S & W FILE NO. (E1) (11-20) (21-24)		(14-10)	
010101560122920130		12177 00	
JOB ORDER NO.			

9305050279

D

50-410
 9111 070103
 10/31/91

07-540-91