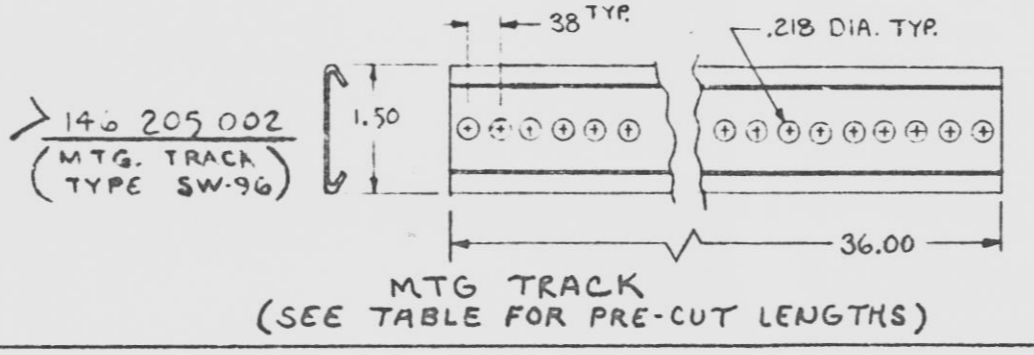
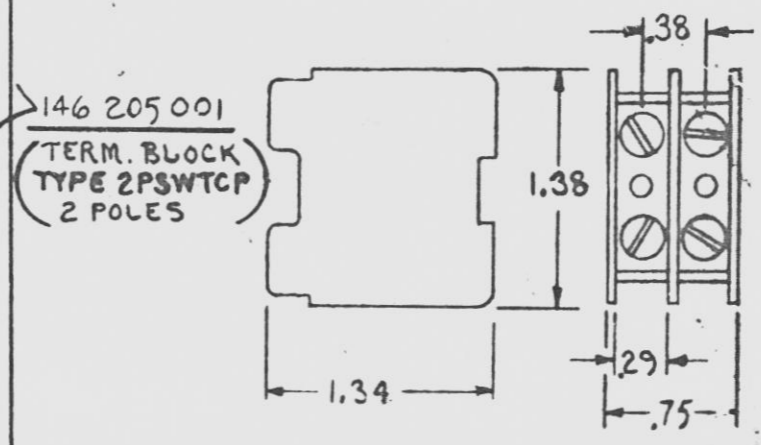
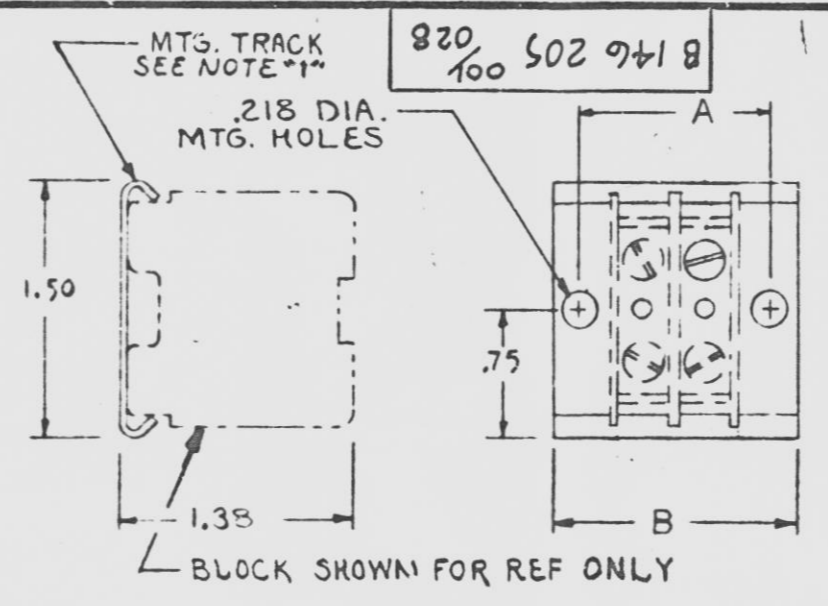


| MOUNTING TRACK PRE-CUT<br>(SEE NOTE 1) |              |       |       |            |            |
|--|--------------|-------|-------|------------|------------|
| ESB PART NO                            | BLOCKS (REF) | A     | B     | POLE (REF) | VENDOR P/N |
| > 003                                  | 1            | 1.12  | 1.43  | 2          | SW-2       |
| > 004                                  | 2            | 1.87  | 2.18  | 4          | SW-4       |
| > 005                                  | 3            | 2.62  | 2.93  | 6          | SW-6       |
| > 006                                  | 4            | 3.38  | 3.68  | 8          | SW-8       |
| > 007                                  | 5            | 4.12  | 4.43  | 10         | SW-10      |
| > 008                                  | 6            | 4.87  | 5.18  | 12         | SW-12      |
| > 009                                  | 7            | 5.62  | 5.93  | 14         | SW-14      |
| > 010                                  | 8            | 6.38  | 6.68  | 16         | SW-16      |
| > 011                                  | 9            | 7.12  | 7.43  | 18         | SW-18      |
| > 012                                  | 10           | 7.87  | 8.18  | 20         | SW-20      |
| > 013                                  | 11           | 8.62  | 8.93  | 22         | SW-22      |
| > 014                                  | 12           | 9.38  | 9.68  | 24         | SW-24      |
| > 015                                  | 13           | 10.12 | 10.43 | 26         | SW-26      |
| > 016                                  | 14           | 10.87 | 11.18 | 28         | SW-28      |
| > 017                                  | 15           | 11.62 | 11.93 | 30         | SW-30      |
| > 018                                  | 16           | 12.38 | 12.68 | 32         | SW-32      |
| > 019                                  | 17           | 13.12 | 13.43 | 34         | SW-34      |
| > 020                                  | 18           | 13.87 | 14.18 | 36         | SW-36      |
| > 021                                  | 19           | 14.62 | 14.93 | 38         | SW-38      |
| > 022                                  | 20           | 15.38 | 15.68 | 40         | SW-40      |
| > 023                                  | 21           | 16.12 | 16.43 | 42         | SW-42      |
| > 024                                  | 22           | 16.87 | 17.18 | 44         | SW-44      |
| > 025                                  | 23           | 17.62 | 17.93 | 46         | SW-46      |
| > 026                                  | 24           | 18.38 | 18.68 | 48         | SW-48      |
| > 027                                  | 25           | 19.12 | 19.43 | 50         | SW-50      |
| > 028                                  | 26           | 19.87 | 20.18 | 52         | SW-52      |



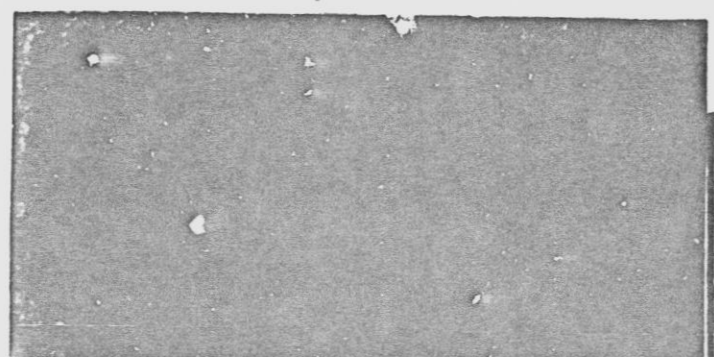
**SPECIFICATION**  
 Assembly having electro-tinned tubular connector with No. 10-32 terminal screws captivated by traveling pressure pad. Accepts wire from No. 10AWG to No. 8AWG. Rated 50 amps/600 volts. Breakdown voltage: 7,000 volts. CSA APPROVED

VENDOR - CURTIS  
 PT. NO. TERMINAL BLOCK - TYPE 2PSWTCP  
 MOUNTING TRACK - TYPE SW-96  
 MTS. TRACK PRE-CUT - TYPE SW-(NO. OF POLES)

NOTE  
 1. MTS. TRACK CAN BE MADE FROM 146 205 002 AND CUT TO REQUIRED LENGTH

30-7901040014

ALL ITEMS MARKED > ARE EMD STANDARD



|  |                              |                           |                 |
|--|------------------------------|---------------------------|-----------------|
| EXIDE POWER SYSTEMS DIVISION<br>ESB INCORPORATED<br>RALPHIGH, N.C. 27604   |                              | TRACK-TYPE TERMINAL BLOCK |                 |
| REV. A   | DESIGNATION: Rev Per Cn 4195 | DATE: 1-24-79             | AP: [Signature] |
| <small>These drawings and specifications are the property of ESB Incorporated and shall not be reproduced or used in whole or in part for manufacture or sale of equipment without permission.</small> |                              |                           |                 |

|  |   |
|--|---|
| STONE & WEBSTER ENGINEERING CORPORATION  |   |
| NINE MILE POINT NUCLEAR STATION - UNIT 2<br>NIAGARA MOHAWK POWER CORPORATION<br>J.O. 12177 |   |
| INSTRUCTIONS TO SUPPLIER (E2)  |   |
| APPROVED   | AS DEFINED IN SPECIFICATION   |
| APPROVED AS REVISED  |   |
| RELEASED FOR FABRICATION   |   |
| RELEASED FOR MATERIAL PURCHASE   |   |
| SUPPLIER TO RESUBMIT   | <input type="checkbox"/> REVISED PRINTS<br><input type="checkbox"/> REVISED MICROFILM APERTURE CARDS<br><input type="checkbox"/> FOR REVIEW<br><input checked="" type="checkbox"/> FOR RECORD<br><input type="checkbox"/> NONE REQUIRED |
| NOTES:   |   |
| (E1) FOR INFORMATION ONLY<br>RETURN TO SUPPLIER NOT REQUIRED                               |   |
| INSTRUCTIONS TO DESIGN (CIRCLE) (E1)   | I-O P-L P-S (E) F-D (F)W REV  |
| DESIGN ENGINEER'S DATE STAMP (D)<br>OUT: RUSSELL 29 APR 1979                               |   |
| INITIALS OF SELECTED REVIEWERS   |   |
| RESPONSIBLE ENGINEER'S DATE STAMP (E2)<br>NOTED APR 4 1979 R.V. ADAM                       |   |
| SUPERSEDES S & W FILE NO. (E1) (25-34) (35-38)   |   |
| REMARKS (C) (LIMIT TO 22 CHARACTERS & BLANKS) (53-74)                                      |   |
| S & W EQUIP. I.D. CODE (E1) (25-36)  | AREA DESIGNATION CODES (E1) (75-80)   |
| 2 VBB-U1P5-  |   |
| MFR'S. DWG. NO. (C) (LIMIT TO 24 CHARACTERS & BLANKS) (37-60)                              |   |
| 146205001028 REV A   |   |
| MFR'S. NAME (C) (LIMIT TO 20 CHARACTERS & BLANKS) (61-80)                                  |   |
| EXIDE POWER SYS DIV  |   |
| DATE MONTH DAY YR (25-30)  | DWG TYPE (E1)   |
| 01 11 16 79  | E   |
| (31) MAX DAYS IN DESIGN (E1)   | (32-53)   |
| 21   |   |
| FUNCTIONAL TITLE (E1) (LIMIT TO 44 CHARACTERS & BLANKS) (37-80)                            |   |
| Track Type Terminal Block  |   |
| S & W FILE NO. (E1) (11-25)  | (21-24)   |
| 00101156021210121A   |   |
| JOB ORDER NO. 12177 00   |   |

9305050276

D

50-410  
911070103  
10/31/90

07-539-91