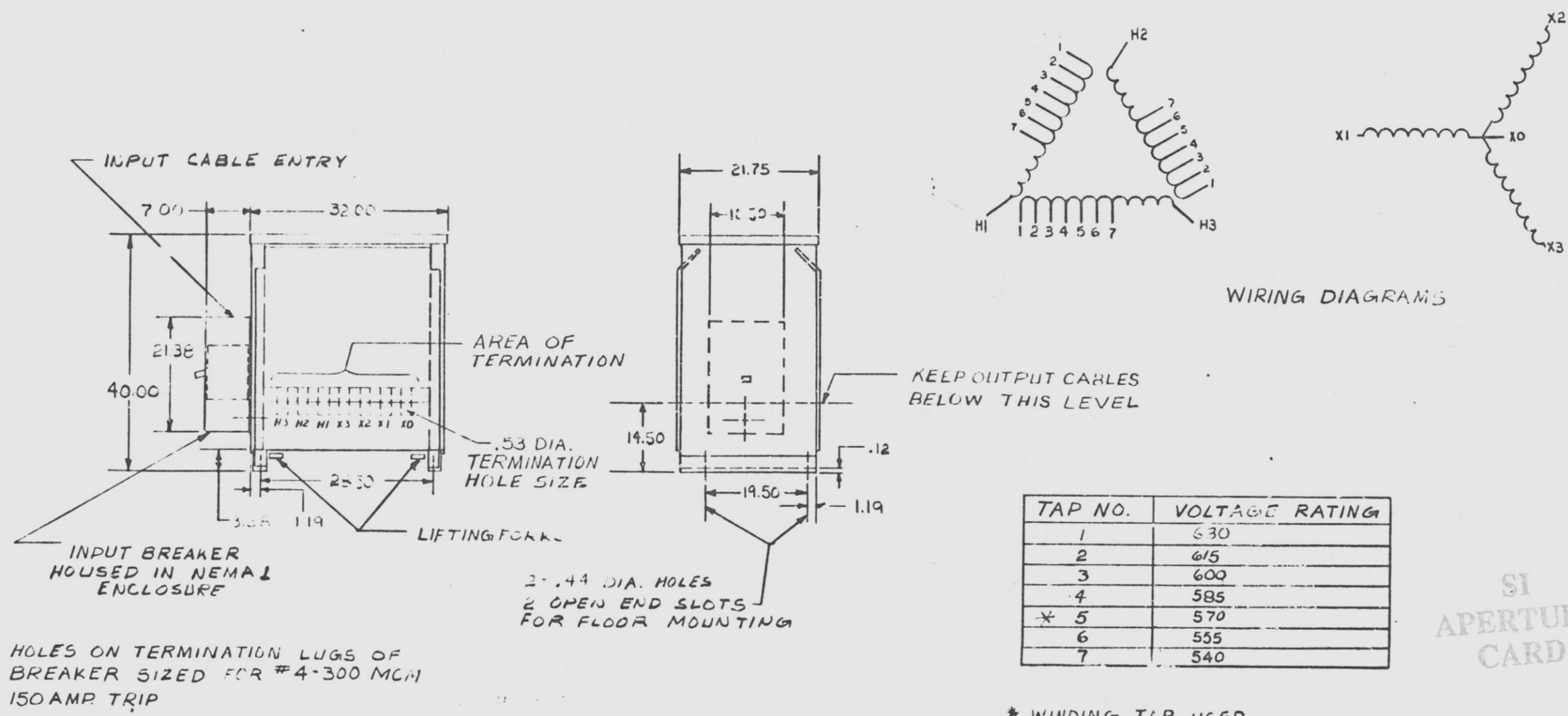


149 958110



HOLES ON TERMINATION LUGS OF BREAKER SIZED FOR #4-300 MCM 150 AMP TRIP

2 - .44 DIA. HOLES
2 OPEN END SLOTS
FOR FLOOR MOUNTING

* WINDING TAP USED

TRANSFORMER-P/N 9T23B3895
BREAKER P/N-TFK 236150 WL
P.O.# NMP2-ED35A

EXIDE POWER SYSTEMS DIVISION ESB INCORPORATED RALEIGH, N.C. 27604			GENERAL ELECTRIC DRY TYPE TRANSFORMER GEN. PURPOSE WITH INPUT BREAKER
DRW: R ALLEN 7-5-79 CR: W.A.P. 7-5-79 DATE: 7-5-79 SCALE: 1/2"=1'-0"	B 149 958 110		

▲ 5225 16A

STONE & WEBSTER ENGINEERING CORPORATION
 NINE MILE POINT NUCLEAR STATION - UNIT 2
 NIAGARA MOHAWK POWER CORPORATION
 J. O. 12177

INSTRUCTIONS TO SUPPLIER (E2)

APPROVED AS DEFINED IN SPECIFICATION
 APPROVED AS REVISED
 RELEASED FOR FABRICATION
 RELEASED FOR MATERIAL PURCHASE

SUPPLIER TO RESUBMIT	Q	REVISED PRINTS
	N	REVISED MICROFILM
	T	APERTURE CARDS
	Y	
		FOR REVIEW
		FOR RECORD
		<input checked="" type="checkbox"/> NONE REQUIRED

NOTES:

(E1) FOR INFORMATION ONLY
 RETURN TO SUPPLIER NOT REQUIRED

INSTRUCTIONS TO DESIGN (CIRCLE) (E1) I-O P-L P-S R&C F-D NEW REV.

DESIGN ENGINEER'S DATE STAMP (D)
 OUT: 2/10/83 AUG 23 1983 G. MOY

INITIALS OF SELECTED REVIEWERS
 NR

RESPONSIBLE ENGINEER'S DATE STAMP (E2)
 NOTED AUG 23 1983 G. MOY

3 SUPERSEDES S & W FILE NO. (E1) (25-34) (35-38)
 01010151610212910110

REMARKS (C) (LIMIT TO 22 CHARACTERS & BLANKS) (53-74)
 N/A

S & W EQUIP. I.D. CODE (E1) (25-36)
 21VBB-01PIS1-1 4

AREA DESIGNATION CODES (E1) (75-80)

2 MFR'S. DWG. NO. (C) (LIMIT TO 24 CHARACTERS & BLANKS) (37-60)
 149958110

MFR'S. NAME (C) (LIMIT TO 20 CHARACTERS & BLANKS) (61-80)
 EXIDE POWER

DATE (C)	MONTH	DAY	YR (25-30)	DWG. TYPE (E1)	(31)	MAX. DAYS IN DESIGN (E1)	(32-33)
018	2	28	83	E		0	0

1 FUNCTIONAL TITLE (E1) (LIMIT TO 44 CHARACTERS & BLANKS) (37-80)
 TRANSFORMER-GENERAL PURPOSE POWER

S & W FILE NO. (E1) (11-20) (21-24)
 01010151610212910110

D U P JOB ORDER NO. 12177 00

SI APERTURE CARD

9305050270 D

50-410
 9111070103
 10/31/91

07-538-91