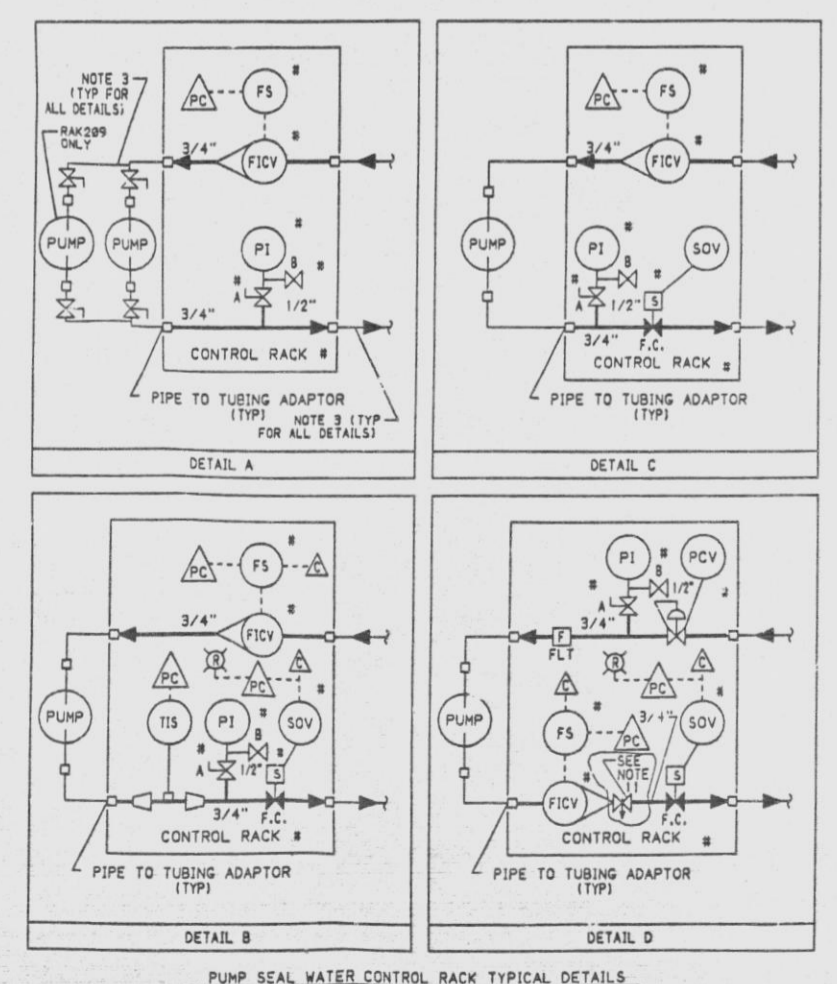


WAVE NUMBER	VALVE DESCRIPTION	SIZE	NO. OF VALVES
V131, V132, V134	VPS015-H-4	3/4"	75
V136, V137, V138			
V139, V140, V142			
V143, V144, V145, V146			
V147, V148, V149, V148			
V151, V152, V153, V154			
V155, V156, V157, V158			
V176, V180, V191			

- NOTES:
1. ALL INSTRUMENT & EQUIPMENT NUMBERS TO BE PREFIXED WITH "2SWR" EXCEPT WHERE A DIFFERENT PREFIX IS SHOWN.
  2. ALL PIPING IS CLASS 15 UNLESS OTHERWISE NOTED.
  3. 3/4" O.D., 8.189" WALL THICKNESS, ASTM A-213 OR TP316 SEAMLESS S.S. TUBING.
  4. ALL SKID-MOUNTED PIPING SUPPLIED BY SKID VENDOR.
  5. ALL VENT, DRAIN & INSTRUMENT CONNECTIONS ARE 3/4" UNLESS OTHERWISE NOTED.
  6. FOR CONTROL RACK DETAILS, SEE THIS DRAWING (B-9)
  7. LVS COMPUTER I/O POINT.
  8. PROGRAMMABLE CONTROLLER I/O POINT.
  9. DENOTES EQUIPMENT SUPPLIED BY SEAL WATER SYSTEM VENDOR.
  10. NO FLGCS SHOWN ON CORRESPONDING DOCUMENT. COORDINATES PROVIDE INTERFACE LOCATION.
  11. FICV INTERNAL BALL, HOLDER AND SPRING HAVE BEEN REMOVED. VALVE PROVIDES MANUAL FLOW CONTROL BY UTILIZING ITS INTEGRAL NEEDLE VALVE.

RACK SCHEDULE

RACK NUMBER	RACK DETAIL	PUMP SERVED	FILTER	FLOW INDICATING CONTROL VALVE	FLOW SWITCH	PRESSURE INDICATOR	BLOCK & BLEED VALVE DESCRIPTION (V102B-L1R1)	PRESSURE VALVE	TEMPERATURE INDICATING SWITCH	SOLENOID VAL DESCRIPTION (V102B-G)	PID FOR PUMP SERVED	LVS CHPTR SOV OUTPUT POINT NO.	VALVE POSITION CHPTR POINT	VALVE POSITION PC INPUT	FS PC INPUTS	VAL POSITION PC OUTPUT OPEN	TIS PC INPUT POINT
RAK40A	A	2LWS-P1A	N/A	FICV2A	FS2A	PI16A	V66 A/B	N/A	N/A	N/A	PID-40A	N/A	N/A	N/A	1032	N/A	N/A
RAK40B	A	2LWS-P1B	N/A	FICV2B	FS2B	PI16B	V67	N/A	N/A	N/A	A	N/A	N/A	N/A	1033	N/A	N/A
RAK40C	A	2LWS-P1C	N/A	FICV2C	FS2C	PI16C	V68	N/A	N/A	N/A	A	N/A	N/A	N/A	1034	N/A	N/A
RAK41A	A	2LWS-P2A	N/A	FICV3A	FS3A	PI17A	V69	N/A	N/A	N/A	D	N/A	N/A	N/A	1035	N/A	N/A
RAK41B	A	2LWS-P2B	N/A	FICV3B	FS3B	PI17B	V70	N/A	N/A	N/A	D	N/A	N/A	N/A	1037	N/A	N/A
RAK42A	A	2LWS-P3A	N/A	FICV4A	FS4A	PI18A	V71	N/A	N/A	N/A	C	N/A	N/A	N/A	1040	N/A	N/A
RAK42B	A	2LWS-P3B	N/A	FICV4B	FS4B	PI18B	V72	N/A	N/A	N/A	C	N/A	N/A	N/A	1049	N/A	N/A
RAK43A	D	2LWS-P6A	FL13	FICV5A	FS5A	PI19A	V56	PCV25A	SOV14A	J	SWR0305	SWR2C005	1859	1859	0811	0811	
RAK43B	D	2LWS-P6B	FL14	FICV5B	FS5B	PI19B	V57	PCV25B	SOV14B	J	SWR0306	SWR2C006	1859	1859	0812	0812	
RAK208	A	2LWS-P7	N/A	FICV18	FS18	PI22	V73	N/A	N/A	N/A	N/A	N/A	N/A	N/A	1035	N/A	N/A
RAK209	B	2LWS-P8	N/A	FICV19	FS19	PI23	V74	N/A	N/A	N/A	N/A	N/A	N/A	N/A	1036	N/A	N/A
RAK202	B	2LWS-P9	N/A	FICV12	FS12	PI19	V86	TS11	NOT RECD	N	N/A	N/A	N/A	N/A	1013	N/A	N/A
RAK44A	B	2LWS-P10A	N/A	FICV6A	FS6A	PI19A	V59	TS11	NOT RECD	N	N/A	N/A	N/A	N/A	1013	N/A	N/A
RAK44B	B	2LWS-P10B	N/A	FICV6B	FS6B	PI19B	V60	TS12	NOT RECD	N	N/A	N/A	N/A	N/A	1014	N/A	N/A
RAK203	B	2LWS-P11	N/A	FICV13	FS13	PI20	V81	TS13	NOT RECD	N	N/A	N/A	N/A	N/A	1015	N/A	N/A
RAK204	B	2LWS-P13	N/A	FICV14	FS14	PI21	V82	TS14	NOT RECD	N	N/A	N/A	N/A	N/A	1016	N/A	N/A
RAK205	A	2LWS-P15	N/A	FICV15	FS15	PI22	V74	TS15	NOT RECD	N	N/A	N/A	N/A	N/A	1025	N/A	N/A
RAK45A	A	2LWS-P16A	N/A	FICV7A	FS7A	PI20A	V75	N/A	N/A	N/A	N/A	N/A	N/A	N/A	1036	N/A	N/A
RAK45B	A	2LWS-P16B	N/A	FICV7B	FS7B	PI20B	V76	N/A	N/A	N/A	N/A	N/A	N/A	N/A	1037	N/A	N/A
RAK45A	A	2LWS-P17A	N/A	FICV8A	FS8A	PI21A	V77	N/A	N/A	N/A	N/A	N/A	N/A	N/A	1038	N/A	N/A
RAK45B	A	2LWS-P17B	N/A	FICV8B	FS8B	PI21B	V78	N/A	N/A	N/A	N/A	N/A	N/A	N/A	1039	N/A	N/A
RAK47A	A	2LWS-P18A	N/A	FICV9A	FS9A	PI22A	V79	N/A	N/A	N/A	N/A	N/A	N/A	N/A	1038	N/A	N/A
RAK47B	A	2LWS-P18B	N/A	FICV9B	FS9B	PI22B	V80	N/A	N/A	N/A	N/A	N/A	N/A	N/A	1039	N/A	N/A
RAK206	A	2LWS-P27	N/A	FICV16	FS16	PI23	V81	N/A	N/A	N/A	N/A	N/A	N/A	N/A	1038	N/A	N/A
RAK207	D	2LWS-P28	ELT5	FICV17	FS17	PI23B	V82	PCV26	SOV15	J	SWR0307	SWR2C007	1811	1811	0813	0813	
RAK208	C	2LWS-P6	N/A	FICV11	FS11	PI24	V83	N/A	N/A	N/A	PID-41B	N/A	N/A	N/A	1042	N/A	N/A
RAK48A	C	2LWS-P7A	N/A	FICV18A	FS18A	PI23A	V84	SOV15A	N/A	B	N/A	N/A	N/A	N/A	1043	N/A	N/A
RAK48B	C	2LWS-P7B	N/A	FICV18B	FS18B	PI23B	V85	SOV15B	N/A	B	N/A	N/A	N/A	N/A	1044	N/A	N/A
RAK209	A	2LWS-P28A	N/A	FICV19	FS19	PI25	V82	N/A	N/A	N/A	N/A	N/A	N/A	N/A	1045	N/A	N/A
RAK49A	A	2LWS-P12A	N/A	FICV11A	FS11A	PI24A	V83	N/A	N/A	N/A	N/A	N/A	N/A	N/A	1046	N/A	N/A
RAK49B	A	2LWS-P12B	N/A	FICV11B	FS11B	PI24B	V84	N/A	N/A	N/A	N/A	N/A	N/A	N/A	1047	N/A	N/A



SI APERTURE CARD  
07-111-9L

QA CAT II

NIAGARA MOHAWK  
NNE MILE POINT  
NUCLEAR STATION - UNIT 2  
SCRIBA, N.Y.  
PIPING & INSTRUMENTATION DIAGRAM  
RADWASTE SEAL WATER SYSTEM

REV	DATE	DESCRIPTION OF REVISION	NO.	DES	CHKD	END	ELEC	MECH	STR	NO.	REV	DATE	DESCRIPTION OF REVISION	NO.	DES	CHKD	END	ELEC	MECH	STR	SCALE	DRAWING NO.
7	6-11-91	INCORPORATES EDC NO. 218154 ADDED NEW TITTLE BLOCK								LHW	RJB	6-31-89	INCORPORATES EDC NO. 218085B								1/8"	12177-PID-40M-7

9305050085