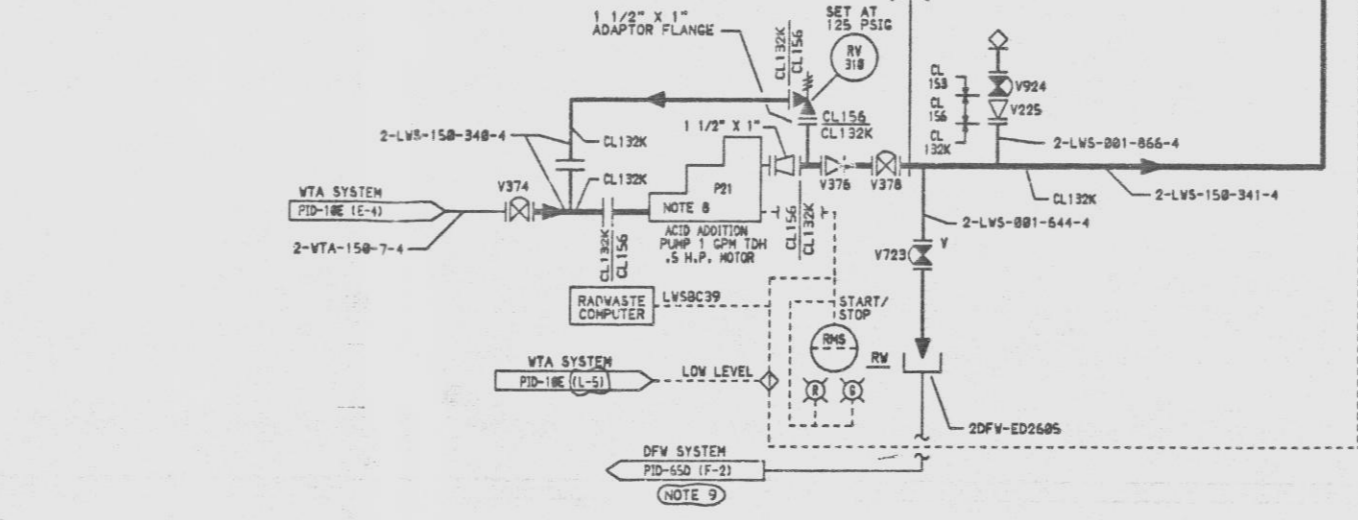
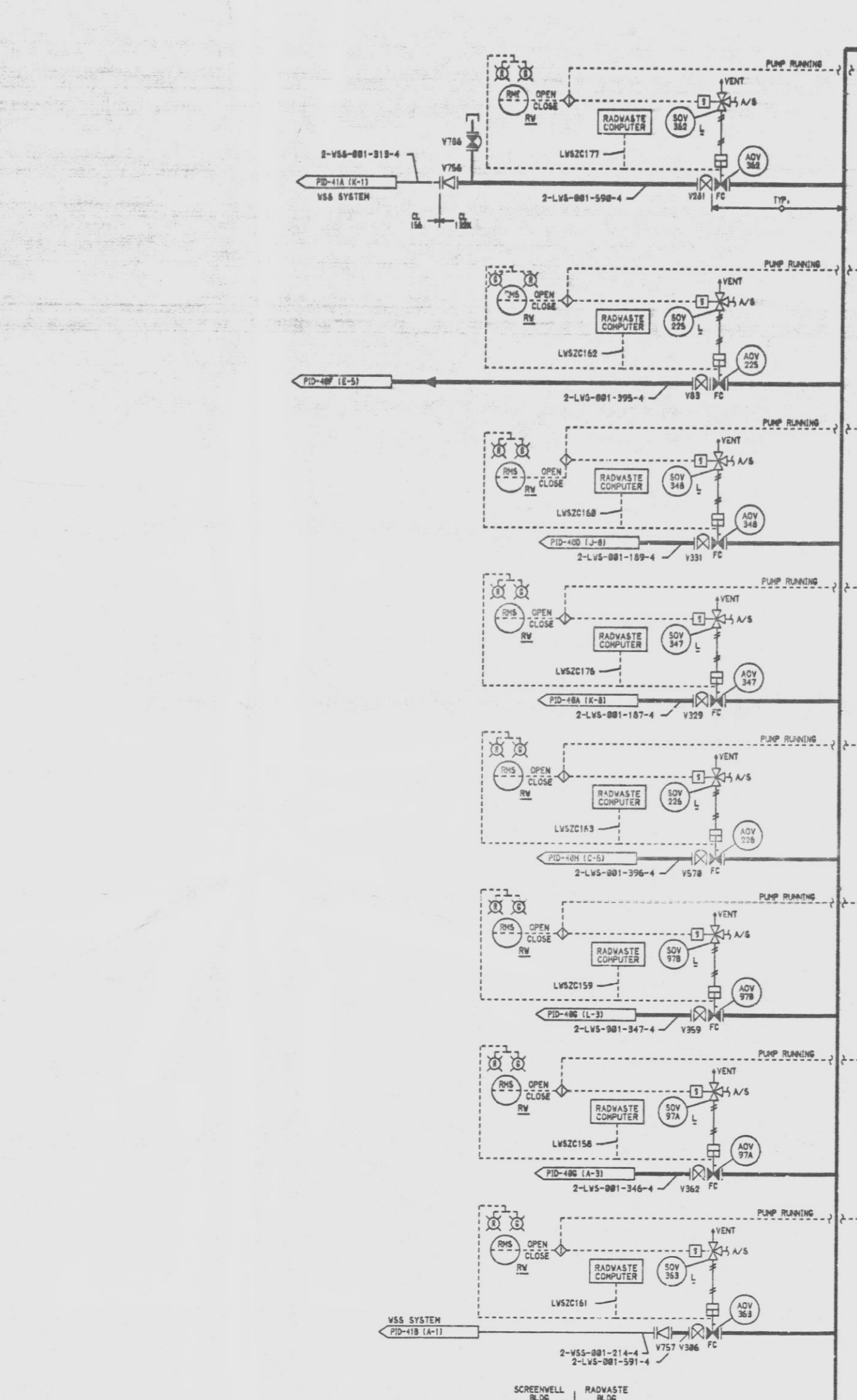
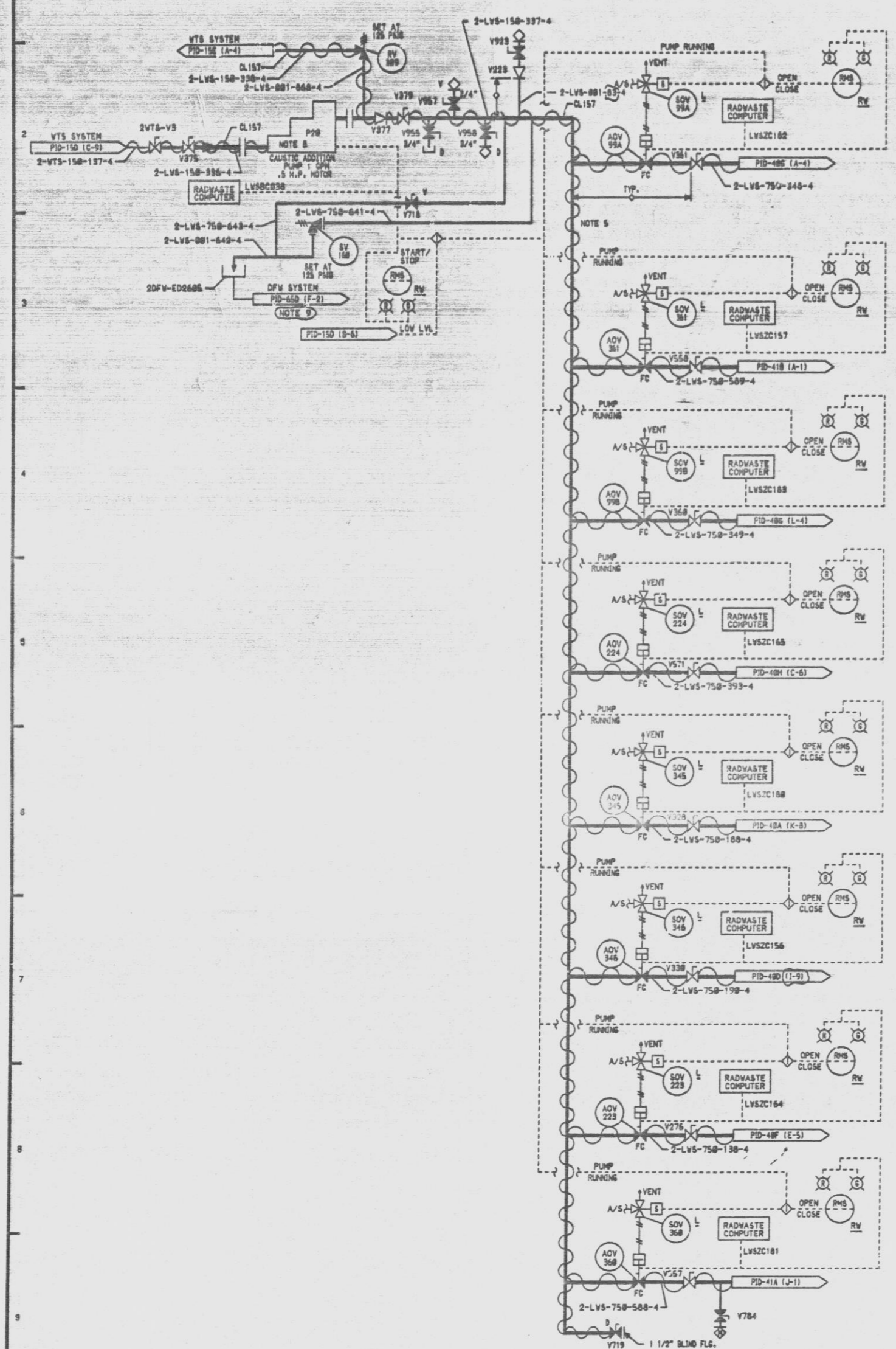


MARK NUMBER	VALVE DESCRIPTION	SIZE	NO. OF VALVES
ADV974, 98	VOP815-FB-4RG	"	8
ADV925, 226, 262, 263, 264, 265, 266, 267	VPS815-H-4G	2 1/4"	8
ADV994, 98	VOP815-FB-4R	"	8
ADV925, 226, 245, 246, 247, 248, 249, 250, 251	VPO815-H-4	3/4"	18
V83, 281, 282, 279, 231	VOP815-FB-4R	"	9
V359, 362, 378, 729	VPO815-H-4	3/4"	18
V276, 228, 238, 366, 381	VPS815-H-4	1-1/2"	9
V87, 258, 271, 278, 784	VCS815-S-4R	1-1/2"	1
V374, 378, 721	VOP815-FB-4R	1-1/2"	9
V375, 379, 719	VPS815-H-4	1-1/2"	9
V376	VCS815-S-4R	1-1/2"	1
V377	VCS815-S-4	1-1/2"	1
V923	VPS815-H-4	"	1
V223	VCS815-S-4	"	1
V225, 258, 757	VCS815-S-4R	"	9
V924	VOP815-FB-4R	"	1
V706	VOP815-FB-4R	3/4"	1



- NOTES:
1. ALL INSTRUMENT AND EQUIPMENT NUMBERS TO BE PREFIXED WITH "LVS-" EXCEPT WHERE A DIFFERENT PREFIX IS SHOWN.
 2. ALL PIPING IS CL150 UNLESS OTHERWISE SHOWN.
 3. ALL INSTRUMENT, TEST, VENT AND DRAIN CONNECTIONS ARE 2", UNLESS OTHERWISE NOTED.
 4. ALL INSTRUMENT FLUSH CONNECTIONS ARE 3/4".
 5. ALL CAUSTIC LINES ARE ELECTRICALLY HEAT TRACED TO MAINTAIN A MINIMUM OF 20°F TEMPERATURE.
 6. → ○ → DENOTES "LOCATE AS CLOSE AS POSSIBLE."
 7. ALL TEMPERATURE INSTR CONNECTIONS ARE 1-1/4" UNLESS OTHERWISE NOTED.
 8. PUMPS P08 AND P01 HAVE AN INTERNAL PRESSURE RELIEF VALVE WHICH MUST NOT BE REMOVED OR DISABLED.
 9. NO FIELD SKETCH OR CORRESPONDING DOCUMENT, COORDINATES PROVIDE INTERFACE LOCATION.

SI APERTURE CARD

07-11-91
QA CAT II

PIPING & INSTRUMENTATION DIAGRAM
RADIOACTIVE LIQUID WASTE SYSTEM

NINE MILE POINT NUCLEAR STATION-UNIT 2
NIAGARA MOHAWK POWER CORPORATION

STONE & WEBSTER ENGINEERING CORPORATION
CHERRY HILL, N.J.

DRAWING 12177-PID-40K-8
DESIGNED BY D. REESE
DRAWN BY D. REESE
CHECKED BY E. CURRAN
DATE

ISSUE	DESCRIPTION	CHKD	DATE	ISSUE	DESCRIPTION	CHKD	DATE	ISSUE	DESCRIPTION	CHKD	DATE	ISSUE	DESCRIPTION	CHKD	DATE				
1	INCORPORATES ECN NO. LVS-113	JWR	07/11/91	2	INCORPORATES ECN NO. LVS-118	JWR	07/11/91	3	INCORPORATES ECN NO. LVS-105	JWR	07/11/91	4	AS TESTED ISSUE INCORPORATES ECN NO'S LVS-087 TO 089, 091 TO 093, 481 TO 489, 508 TO 524, 526, 581 TO 588, 618 TO 623, 698	JWR	07/11/91	5	ISSUED FOR COMPUTER DATA BASE UPDATE ONLY	JWR	07/11/91

9305050081