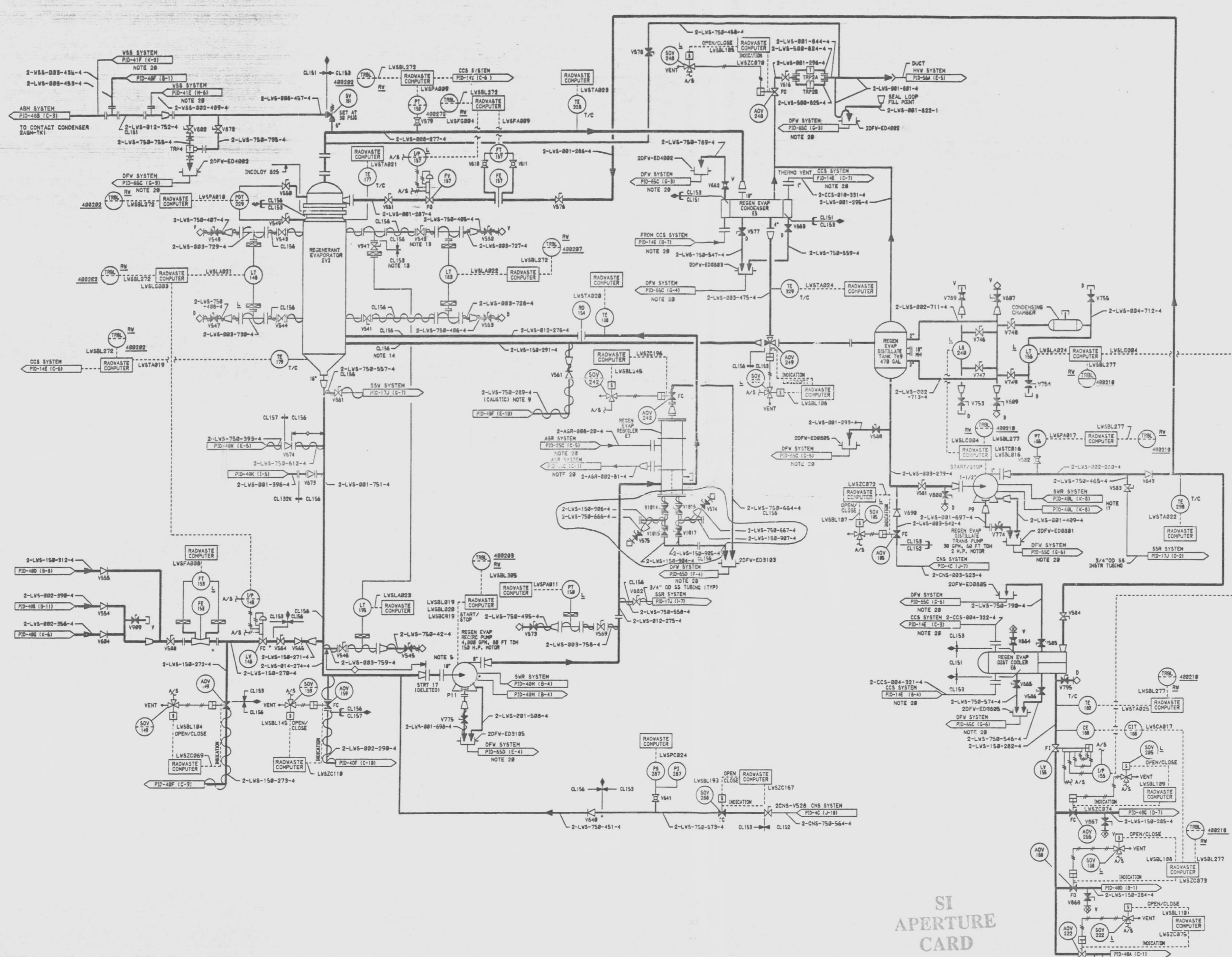


12177-PID-40H-7

VALVE NUMBER	DESCRIPTION	SIZE	NO. OF VALVES
ADV185	VPSB15-1C-4EQ	1-1/2"	1
ADV186,285,228	VPSB15-1C-4EQ	1-1/2"	1
ADV149	VPSB15-1C-4EQ	1-1/2"	1
ADV159	VPSB15-1C-4EQ	1-1/2"	1
ADV243	VPSB15-1C-4EQ	3/4"	1
ADV248	VPSB15-1C-4EQ	3/4"	1
ADV249	VPSB15-1C-4EQ	3/4"	1
SOV228	VPSB15-1C-4EQ	3/4"	1
V54,644,649	VPSB15-1C-4EQ	3/4"	1
V581	VPSB15-1C-4EQ	3/4"	1
V668,788,789,790,791,792,793,794,795,796,797,798,799	VPSB15-1C-4EQ	3/4"	1
V555	VPSB15-1C-4EQ	1-1/2"	1
V541,542,543,544,545,546	VPSB15-1C-4EQ	3/4"	1
V515,516,517,518,519,520,521,522,523,524,525,526,527,528,529,530,531,532,533,534,535,536,537,538,539,540,541,542,543,544,545,546,547,548,549,550,551,552,553,554,555,556,557,558,559,560,561,562,563,564,565,566,567,568,569,570,571,572,573,574,575,576,577,578,579,580,581,582,583,584,585,586,587,588,589,590,591,592,593,594,595,596,597,598,599,600,601,602,603,604,605,606,607,608,609,610,611,612,613,614,615,616,617,618,619,620,621,622,623,624,625,626,627,628,629,630,631,632,633,634,635,636,637,638,639,640,641,642,643,644,645,646,647,648,649,650,651,652,653,654,655,656,657,658,659,660,661,662,663,664,665,666,667,668,669,670,671,672,673,674,675,676,677,678,679,680,681,682,683,684,685,686,687,688,689,690,691,692,693,694,695,696,697,698,699,700,701,702,703,704,705,706,707,708,709,710,711,712,713,714,715,716,717,718,719,720,721,722,723,724,725,726,727,728,729,730,731,732,733,734,735,736,737,738,739,740,741,742,743,744,745,746,747,748,749,750,751,752,753,754,755,756,757,758,759,760,761,762,763,764,765,766,767,768,769,770,771,772,773,774,775,776,777,778,779,780,781,782,783,784,785,786,787,788,789,790,791,792,793,794,795,796,797,798,799,800,801,802,803,804,805,806,807,808,809,810,811,812,813,814,815,816,817,818,819,820,821,822,823,824,825,826,827,828,829,830,831,832,833,834,835,836,837,838,839,840,841,842,843,844,845,846,847,848,849,850,851,852,853,854,855,856,857,858,859,860,861,862,863,864,865,866,867,868,869,870,871,872,873,874,875,876,877,878,879,880,881,882,883,884,885,886,887,888,889,890,891,892,893,894,895,896,897,898,899,900,901,902,903,904,905,906,907,908,909,910,911,912,913,914,915,916,917,918,919,920,921,922,923,924,925,926,927,928,929,930,931,932,933,934,935,936,937,938,939,940,941,942,943,944,945,946,947,948,949,950,951,952,953,954,955,956,957,958,959,960,961,962,963,964,965,966,967,968,969,970,971,972,973,974,975,976,977,978,979,980,981,982,983,984,985,986,987,988,989,990,991,992,993,994,995,996,997,998,999,1000	3/4"	1	
V584	VPSB15-1C-4EQ	1-1/2"	1
V555	VPSB15-1C-4EQ	1-1/2"	1
V579,618,611,611	VPSB15-1C-4EQ	3/4"	1
V580,662,664,789	VPSB15-1C-4EQ	3/4"	1
V580	VPSB15-1C-4EQ	1-1/2"	1
V579	VPSB15-1C-4EQ	1"	1
V578	VPSB15-1C-4EQ	3/4"	1
V778	VPSB15-1C-4EQ	3/4"	1
V622,873	VPSB15-1C-4EQ	3/4"	1
V544	VPSB15-1C-4EQ	3/4"	1
V541,538,537,535,583,585,586,687,689,691	VPSB15-1C-4EQ	3/4"	14
V888,753,754,755	VPSB15-1C-4EQ	1"	4
V515,516,588,774	VPSB15-1C-4EQ	1"	4
V574	VPSB15-1C-4EQ	3/4"	1
V715,747,748,749	VPSB15-1C-4EQ	3/4"	4
V547	VPSB15-1C-4EQ	3/4"	1
V1815,1816,1816	VPSB15-1C-4EQ	1-1/2"	4



- NOTES:
1. ALL INSTRUMENT AND EQUIPMENT NUMBERS TO BE PREFIXED WITH "LVS-" EXCEPT WHERE A DIFFERENT PREFIX IS SHOWN.
 2. ALL PIPING IS CL153 UNLESS OTHERWISE SHOWN.
 3. ALL INSTRUMENT, TEST, VENT & DRAIN CONNECTIONS ARE 2", UNLESS OTHERWISE NOTED.
 4. ALL INSTRUMENT FLUSH CONNECTIONS ARE 3/4".
 5. TEMPORARY STRAINER TO BE REMOVED AFTER LINE CLEANING.
 6. FOR RADWASTE COMPUTER 1/0 SEE LOOP 2LVS-128.
 7. CLASS 200 SOI 80 PIPING.
 8. DENOTES DISSIMILAR METAL WELD.
 9. HEAT TRACING TO BE REDUNDANT FOR BOTH PROCESS AND CAUSTIC LINES AND TO MAINTAIN 125° ± 5°F MIN FOR PROCESS LINES AND 78°F MIN FOR CAUSTIC LINES.
 10. ALL TEMPERATURE INSTR CONNECTIONS ARE 1-1/4" UNLESS OTHERWISE NOTED.
 11. SOLENOID VALVE SUPPLIED AS A NON-ENGINEERED ITEM NO. NE-823, UNDER SPEC M81A.
 12. --- DENOTES "LOCATE AS CLOSE AS POSSIBLE".
 13. LOCATE V541, V542 & V544 AS CLOSE AS POSSIBLE TO EVAPORATOR.
 14. CL 156 SHOULD BE USED TO SAME ELEV. AS INCLOYD 805 IN EVAPORATOR.
 15. TO RADWASTE #1 DG, FLOOR AND OPT DRAINS FSK-23-10C & FSK-23-10D.
 16. DENOTES 6" PIPE BUTT WELDED TO VALVE.
 17. LIQUID SEAL LOOP TO HAVE 4" MIN. DEPTH WITH A 6" MIN. ANTI-SIPHON LINE. STEAM TRAP INLET PIPING TO BE VERTICAL SO THAT CONDENSATE DRAINS BACK TO CONDENSER OR DISTILLATE TANK.
 18. NO FLAG SHOWN ON CORRESPONDING DOCUMENT. COORDINATES PROVIDE INTERFACE LOCATION.

9 07-141-91
 QA CAT II

SI APERTURE CARD

PIPING & INSTRUMENTATION DIAGRAM
 RADIOACTIVE LIQUID
 WASTE SYSTEM
 NINE MILE POINT NUCLEAR STATION-UNIT 2
 NIAGARA MOHAWK POWER CORPORATION
 STONE & WEBBER ENGINEERING CORPORATION
 CHERY HILL, N. J.

NO.	DESCRIPTION	DATE	BY	CHKD	STATUS
1	ISSUED FOR COMPUTER DATA BASE UPDATE ONLY	5-11-88	JRM	JRM	ISSUED
2	INCORPORATES ECN NOS. 2-LSV-185	5-11-88	JRM	JRM	ISSUED
3	AS TESTED ISSUE INCORPORATES ECN NOS. LVS-887 TO 889, 891 TO 898, 901 TO 903, 906 TO 908, 910 TO 912, 915 TO 917, 920 TO 922, 925 TO 927, 930 TO 932, 935 TO 937, 940 TO 942, 945 TO 947, 950 TO 952, 955 TO 957, 960 TO 962, 965 TO 967, 970 TO 972, 975 TO 977, 980 TO 982, 985 TO 987, 990 TO 992, 995 TO 997, 1000 TO 1002	5-11-88	JRM	JRM	ISSUED
4	INCORPORATES ECN NOS. LVS-890 ADDED CONSTRUCTION NOTES	5-11-88	JRM	JRM	ISSUED
5	INCORPORATES ECN NOS. LVS-674 MOD. NO. PNY8MX184	5-11-88	JRM	JRM	ISSUED

9305050071