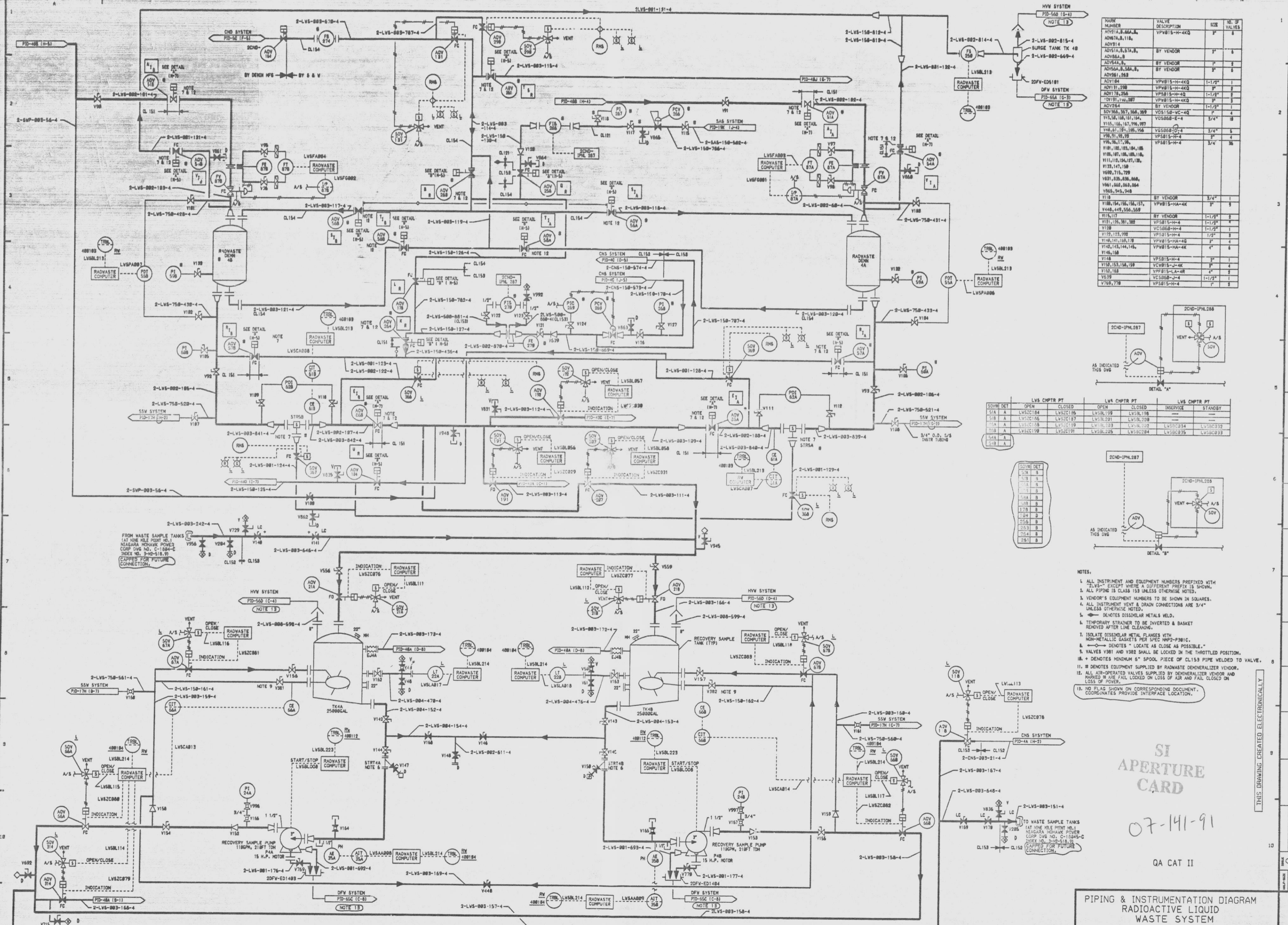


12177-PID-40C-8



NAME NUMBER	DESCRIPTION	SIZE	NO. OF VALVES
ADV11, ADV11A, ADV11B, ADV11C	VPV15-10-4K5	2"	4
ADV12, ADV12A, ADV12B, ADV12C	BT VENDOR	2"	4
ADV13, ADV13A, ADV13B, ADV13C	BT VENDOR	2"	4
ADV14, ADV14A, ADV14B, ADV14C	BT VENDOR	2"	4
ADV15, ADV15A, ADV15B, ADV15C	VPV15-10-4K5	1 1/2"	4
ADV16, ADV16A, ADV16B, ADV16C	VPV15-10-4K5	1 1/2"	4
ADV17, ADV17A, ADV17B, ADV17C	VPV15-10-4K5	1 1/2"	4
ADV18, ADV18A, ADV18B, ADV18C	VPV15-10-4K5	1 1/2"	4
ADV19, ADV19A, ADV19B, ADV19C	VPV15-10-4K5	1 1/2"	4
ADV20, ADV20A, ADV20B, ADV20C	VPV15-10-4K5	1 1/2"	4
ADV21, ADV21A, ADV21B, ADV21C	VPV15-10-4K5	1 1/2"	4
ADV22, ADV22A, ADV22B, ADV22C	VPV15-10-4K5	1 1/2"	4
ADV23, ADV23A, ADV23B, ADV23C	VPV15-10-4K5	1 1/2"	4
ADV24, ADV24A, ADV24B, ADV24C	VPV15-10-4K5	1 1/2"	4
ADV25, ADV25A, ADV25B, ADV25C	VPV15-10-4K5	1 1/2"	4
ADV26, ADV26A, ADV26B, ADV26C	VPV15-10-4K5	1 1/2"	4
ADV27, ADV27A, ADV27B, ADV27C	VPV15-10-4K5	1 1/2"	4
ADV28, ADV28A, ADV28B, ADV28C	VPV15-10-4K5	1 1/2"	4
ADV29, ADV29A, ADV29B, ADV29C	VPV15-10-4K5	1 1/2"	4
ADV30, ADV30A, ADV30B, ADV30C	VPV15-10-4K5	1 1/2"	4

SOV/DET	OPEN	CLOSED	LVIS CHPTR PT	LVIS CHPTR PT	LVIS CHPTR PT	LVIS CHPTR PT
SOV A	LVIS105	LVIS106	LVIS107	LVIS108	LVIS109	LVIS110
SOV B	LVIS111	LVIS112	LVIS113	LVIS114	LVIS115	LVIS116
SOV C	LVIS117	LVIS118	LVIS119	LVIS120	LVIS121	LVIS122
SOV D	LVIS123	LVIS124	LVIS125	LVIS126	LVIS127	LVIS128
SOV E	LVIS129	LVIS130	LVIS131	LVIS132	LVIS133	LVIS134
SOV F	LVIS135	LVIS136	LVIS137	LVIS138	LVIS139	LVIS140
SOV G	LVIS141	LVIS142	LVIS143	LVIS144	LVIS145	LVIS146
SOV H	LVIS147	LVIS148	LVIS149	LVIS150	LVIS151	LVIS152
SOV I	LVIS153	LVIS154	LVIS155	LVIS156	LVIS157	LVIS158
SOV J	LVIS159	LVIS160	LVIS161	LVIS162	LVIS163	LVIS164
SOV K	LVIS165	LVIS166	LVIS167	LVIS168	LVIS169	LVIS170
SOV L	LVIS171	LVIS172	LVIS173	LVIS174	LVIS175	LVIS176
SOV M	LVIS177	LVIS178	LVIS179	LVIS180	LVIS181	LVIS182
SOV N	LVIS183	LVIS184	LVIS185	LVIS186	LVIS187	LVIS188
SOV O	LVIS189	LVIS190	LVIS191	LVIS192	LVIS193	LVIS194
SOV P	LVIS195	LVIS196	LVIS197	LVIS198	LVIS199	LVIS200

- NOTES:
- ALL INSTRUMENT AND EQUIPMENT NUMBERS PREFIXED WITH "2-LVS-". EXCEPT WHERE A DIFFERENT PREFIX IS SHOWN.
 - ALL PIPING IS CLASS 150 UNLESS OTHERWISE NOTED.
 - VENDOR'S EQUIPMENT NUMBERS TO BE SHOWN IN SQUARES.
 - ALL INSTRUMENT VENT & DRAIN CONNECTIONS ARE 3/4" UNLESS OTHERWISE NOTED.
 - denotes stainless steel.
 - TEMPORARY STRAINER TO BE INVERTED & BASKET REMOVED AFTER LINE CLEANING.
 - ISOLATE DISSIPAL METAL PLANGES WITH NON-METAL GASKETS PER SPEC WSP-PM-10C.
 - ADV 1 AND ADV 2 SHALL BE LOCKED IN THE THROTTLED POSITION.
 - A DENOTES "LOCATE AS CLOSE AS POSSIBLE."
 - A/D DENOTES MINIMUM 6" SPOOL PIECE OF CL150 PIPE WELDED TO VALVE.
 - Ø DENOTES EQUIPMENT SUPPLIED BY RADWASTE DEMINERALIZER VENDOR.
 - ALL AIR-OPERATED VALVES SUPPLIED BY DEMINERALIZER VENDOR AND PUMPS TO USE FALL LOCKED ON LOSS OF AIR AND FAIL CLOSED ON LOSS OF POWER.
 - NO BIAS SHOWN ON CORRESPONDING DOCUMENT. COORDINATES PROVIDE INTERFACE LOCATION.

SI APERTURE CARD

07-141-91
QA CAT II

PIPING & INSTRUMENTATION DIAGRAM
RADIOACTIVE LIQUID WASTE SYSTEM
NINE MILE POINT NUCLEAR STATION UNIT 2
NIAGARA MOHAWK POWER CORPORATION
STONE & WEBSTER ENGINEERING CORPORATION
CHERRY HILL, N.J.

ISSUE NO.	DESCRIPTION	CHANGED BY	DATE	REASON
1	ISSUED FOR COMPUTER DATA BASE UPDATE ONLY	TSR	12-15-77	INCORPORATES E.C.N. NO. S. 184, 188, 191
2				INCORPORATES E.C.N. NO. S. 184, 188, 191
3				INCORPORATES E.C.N. NO. S. 184, 188, 191
4				INCORPORATES E.C.N. NO. S. 184, 188, 191
5				INCORPORATES E.C.N. NO. S. 184, 188, 191
6				INCORPORATES E.C.N. NO. S. 184, 188, 191
7				INCORPORATES E.C.N. NO. S. 184, 188, 191
8				INCORPORATES E.C.N. NO. S. 184, 188, 191
9				INCORPORATES E.C.N. NO. S. 184, 188, 191
10				INCORPORATES E.C.N. NO. S. 184, 188, 191

9305050031