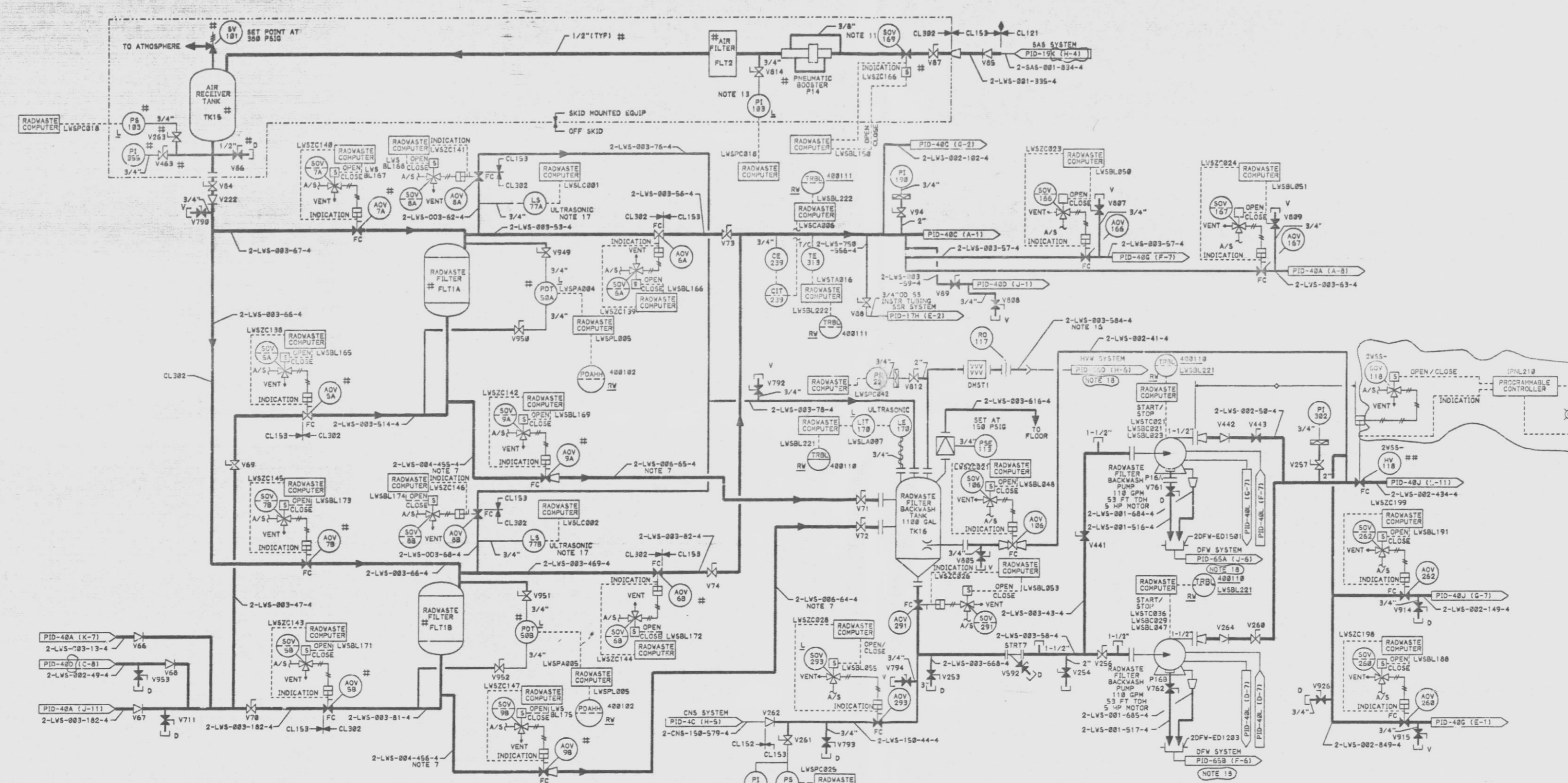


MARK NUMBER	VALVE DESCRIPTION	SIZE	NO. OF VALVES
ADV1A,B,6A,8	BY FLT VENDOR	3"	4
ADV1A,B	BY FLT VENDOR	3"	2
ADV8A,B	VP8015-H-4K	3"	2
ADV9A,B	BY FLT VENDOR	4"	2
ADV186,293	VP8015-H-4K	1-1/2"	2
ADV186,187,291	VP8015-H-4K	3"	3
ADV268,269	VP8015-H-4K	2"	2
ADV189	SEE NOTE 11	1/2"	1
V86,87	V8015-J-4K	3"	2
V86,284,442	VCS806-J-4	2"	3
V89,78,79,74,89	VP8015-HA-4K	3"	7
V254,441			
V71,72	VP8015-HA-4K	6"	2
V84	VP8015-HA-4K	3"	1
V85	VCS806-J-4	1"	1
V86,87	BY FLT VENDOR	1/2"	2
V263,409	BY FLT VENDOR	3/4"	2
V83,281,592,711	VP8015-H-4	3/4"	18
V75,76,79,88,89			
V87,88,89,91,94			
V91,92,95			
V94,254,257,268	VP8015-H-4	2"	6
V443,812			
V222	VCS806-J-4K	3"	1
V253	VP8015-HA-4K	3"	1
V252	VCS806-J-4	1-1/2"	1
V761,762	VP8015-H-4	1"	2
V911,914,949,950	VP8015-H-4	3/4"	6
V951,952			



- NOTES:
1. ALL INSTRUMENT AND EQUIPMENT NUMBERS TO BE PREFIXED WITH "2LVS-" EXCEPT WHERE A DIFFERENT PREFIX IS SHOWN.
 2. ALL PIPING IS CL153 UNLESS OTHERWISE SHOWN.
 3. ALL INSTRUMENT, TEST, VENT & DRAIN CONNECTIONS ARE 2" UNLESS OTHERWISE NOTED.
 4. ALL INSTRUMENT FLUSH CONNECTIONS ARE 3/4".
 5. TEMPORARY STRAPLINES TO BE REMOVED AFTER LINE CLEANING.
 6. FOR RADWASTE COMPUTER I/O SEE LOOP 2LVS-128.
 7. CLASS 302 SCH 80 PIPING.
 8. DENOTES DISSIMILAR METAL WELD.
 9. HEAT TRACING REDUNDANT FOR BOTH PROCESS AND CAUSTIC LINES AND TO MAIN AIR 1254, 2 1/2" MIN FOR PROCESS LINES AND 78°F MIN FOR CAUSTIC LINES.
 10. ALL TEMPERATURE INSTR CONNECTIONS ARE 1-1/4" UNLESS OTHERWISE NOTED.
 11. SOLENOID VALVE SUPPLIED AS A NON-ENGINEERED ITEM (NO. 186-082). UNDER SPEC M704.
 12. DENOTES "LOCATE AS CLOSE AS POSSIBLE."
 13. PRESSURE GAUGE AND ISOLATION VALVE BY S&W.
 14. 18 DENOTES EQUIPMENT SUPPLIED BY RADWASTE FILTER VENDOR.
 15. DENOTES EQUIPMENT SUPPLIED BY VSS EQUIPMENT VENDOR.
 16. LINE TO BE SELF DRAINING.
 17. 2LVS-577A AND 2LVS-577B ARE ABANDONED IN PLACE.
 18. NO FLAG SHOWN ON CORRESPONDING DOCUMENT. COORDINATES PROVIDE INTERFACE LOCATION.

SI
APERTURE
CARD

07-141-9L
QA CAT II

PIPING & INSTRUMENTATION DIAGRAM
RADIOACTIVE LIQUID
WASTE SYSTEM
NINE MILE POINT NUCLEAR STATIC-UNIT 2
NIAGARA MOHAWK POWER CORPORATION
STONE & WEBSTER ENGINEERING CORPORATION
CHERRY HILL, N.J.

DRAWING NUMBER 12177-PID-408-B
ISSUED FOR COMPUTER DATA BASE UPDATE ONLY
DRAWN BY J. MCKELVIE
CHECKED BY E.F. CURRAN

ISSUE	DESCRIPTION	CHKD	DATE	ISSUE	DESCRIPTION	CHKD	DATE	ISSUE	DESCRIPTION	CHKD	DATE
6	INCORPORATES EDC NO. LVS-654 ON PREVIOUS ISSUE			5	INCORPORATES EDC NO'S. LVS-643, 108			4	INCORPORATES EDC NO'S. LVS-636, 105		
5	INCORPORATES EDC NO'S. LVS-619, 636			4	INCORPORATES EDC NO'S. LVS-610, 611, 612, 613, 614, 615, 616, 617, 618, 619, 620, 621, 622, 623, 624, 625, 626, 627, 628, 629, 630, 631, 632, 633, 634, 635, 636, 637, 638, 639, 640, 641, 642, 643, 644, 645, 646, 647, 648, 649, 650, 651, 652, 653, 654, 655, 656, 657, 658, 659, 660, 661, 662, 663, 664, 665, 666, 667, 668, 669, 670, 671, 672, 673, 674, 675, 676, 677, 678, 679, 680, 681, 682, 683, 684, 685, 686, 687, 688, 689, 690, 691, 692, 693, 694, 695, 696, 697, 698, 699, 700, 701, 702, 703, 704, 705, 706, 707, 708, 709, 710, 711, 712, 713, 714, 715, 716, 717, 718, 719, 720, 721, 722, 723, 724, 725, 726, 727, 728, 729, 730, 731, 732, 733, 734, 735, 736, 737, 738, 739, 740, 741, 742, 743, 744, 745, 746, 747, 748, 749, 750, 751, 752, 753, 754, 755, 756, 757, 758, 759, 760, 761, 762, 763, 764, 765, 766, 767, 768, 769, 770, 771, 772, 773, 774, 775, 776, 777, 778, 779, 780, 781, 782, 783, 784, 785, 786, 787, 788, 789, 790, 791, 792, 793, 794, 795, 796, 797, 798, 799, 800, 801, 802, 803, 804, 805, 806, 807, 808, 809, 810, 811, 812, 813, 814, 815, 816, 817, 818, 819, 820, 821, 822, 823, 824, 825, 826, 827, 828, 829, 830, 831, 832, 833, 834, 835, 836, 837, 838, 839, 840, 841, 842, 843, 844, 845, 846, 847, 848, 849, 850, 851, 852, 853, 854, 855, 856, 857, 858, 859, 860, 861, 862, 863, 864, 865, 866, 867, 868, 869, 870, 871, 872, 873, 874, 875, 876, 877, 878, 879, 880, 881, 882, 883, 884, 885, 886, 887, 888, 889, 890, 891, 892, 893, 894, 895, 896, 897, 898, 899, 900, 901, 902, 903, 904, 905, 906, 907, 908, 909, 910, 911, 912, 913, 914, 915, 916, 917, 918, 919, 920, 921, 922, 923, 924, 925, 926, 927, 928, 929, 930, 931, 932, 933, 934, 935, 936, 937, 938, 939, 940, 941, 942, 943, 944, 945, 946, 947, 948, 949, 950, 951, 952, 953, 954, 955, 956, 957, 958, 959, 960, 961, 962, 963, 964, 965, 966, 967, 968, 969, 970, 971, 972, 973, 974, 975, 976, 977, 978, 979, 980, 981, 982, 983, 984, 985, 986, 987, 988, 989, 990, 991, 992, 993, 994, 995, 996, 997, 998, 999, 1000						

9305050029