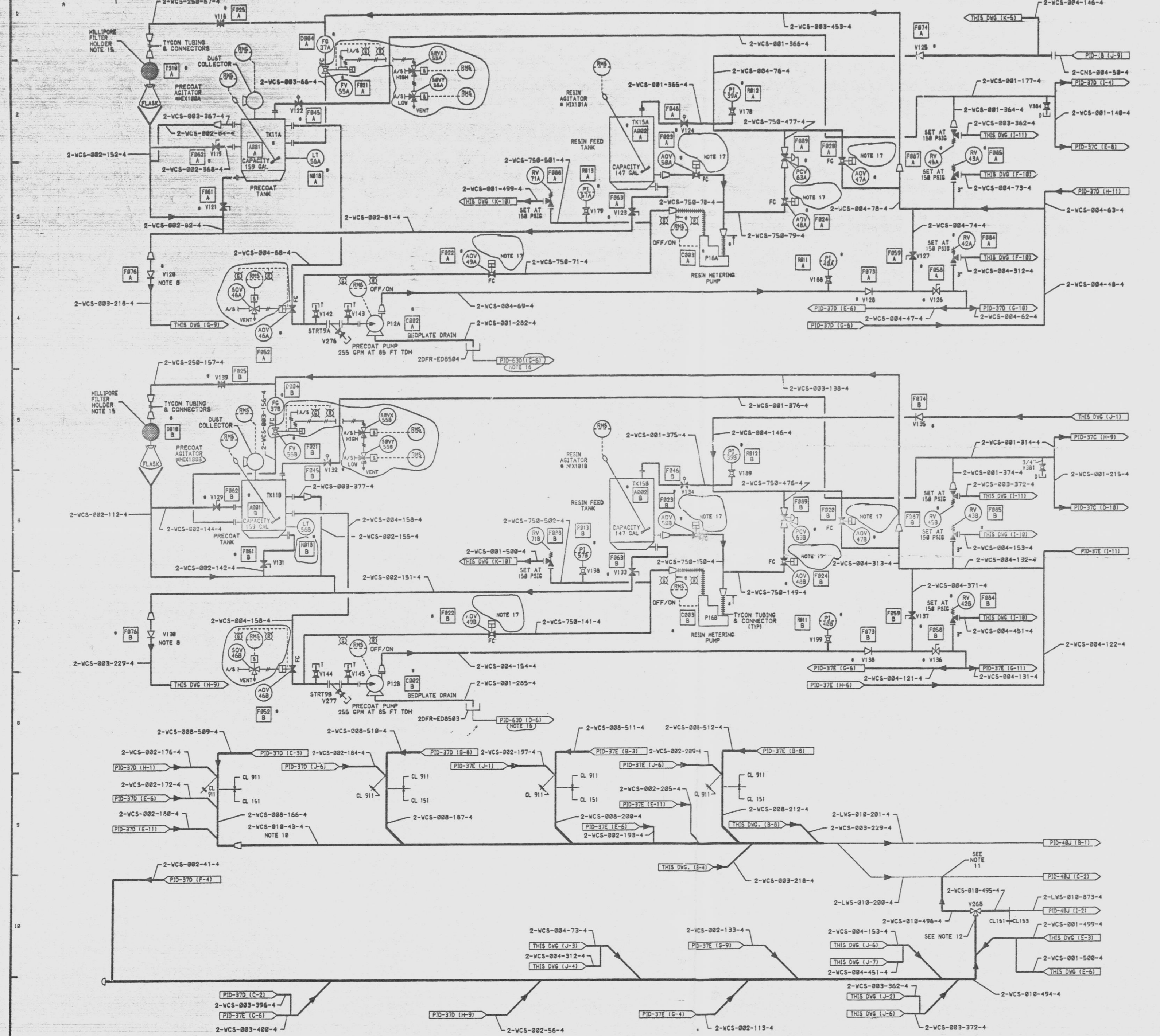
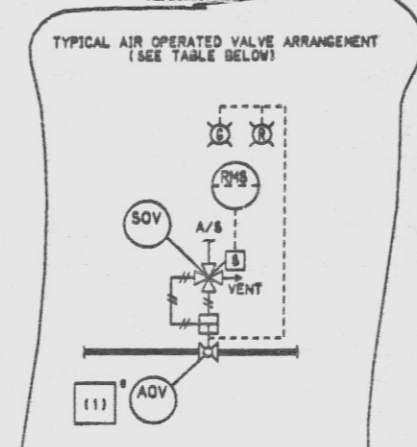


12177-PID-37F-6



MARK NUMBER	VALVE DESCRIPTION	SIZE	VALVE
ADV47A, 47B, 47C, 47D, 47E, 47F, 47G, 47H, 47I, 47J, 47K, 47L, 47M, 47N, 47O, 47P, 47Q, 47R, 47S, 47T, 47U, 47V, 47W, 47X, 47Y, 47Z	SUPPLY BYT		
ADV48A, 48B, 48C, 48D, 48E, 48F, 48G, 48H, 48I, 48J, 48K, 48L, 48M, 48N, 48O, 48P, 48Q, 48R, 48S, 48T, 48U, 48V, 48W, 48X, 48Y, 48Z	GENERAL		
ADV49A, 49B, 49C, 49D, 49E, 49F, 49G, 49H, 49I, 49J, 49K, 49L, 49M, 49N, 49O, 49P, 49Q, 49R, 49S, 49T, 49U, 49V, 49W, 49X, 49Y, 49Z	ELECTRIC		
ADV50A, 50B, 50C, 50D, 50E, 50F, 50G, 50H, 50I, 50J, 50K, 50L, 50M, 50N, 50O, 50P, 50Q, 50R, 50S, 50T, 50U, 50V, 50W, 50X, 50Y, 50Z	ELECTRIC		
V110, V111, V112, V113, V114, V115, V116, V117, V118, V119, V120, V121, V122, V123, V124, V125, V126, V127, V128, V129, V130, V131, V132, V133, V134, V135, V136, V137, V138, V139, V140, V141, V142, V143, V144, V145, V146, V147, V148, V149, V150, V151, V152, V153, V154, V155, V156, V157, V158, V159, V160, V161, V162, V163, V164, V165, V166, V167, V168, V169, V170, V171, V172, V173, V174, V175, V176, V177, V178, V179, V180, V181, V182, V183, V184, V185, V186, V187, V188, V189, V190, V191, V192, V193, V194, V195, V196, V197, V198, V199	SUPPLIED BY		
V268, V269, V270, V271, V272, V273, V274, V275, V276, V277	VOSS68-D-4	3/4"	11
	VPP815-EA-4R	1"	
	VOSS68-D-4	1 1/2"	2



TABLE

AREA	ADV	(1)	SOV
(1-3)	47A	F528	47A
(1-3)	47B	F528	47B
(1-3)	48A	F524	48A
(1-3)	48B	F524	48B
(1-3)	48C	F523	48C
(1-3)	48D	F523	48D
(1-3)	48E	F523	48E
(1-3)	48F	F523	48F
(1-3)	48G	F523	48G
(1-3)	48H	F523	48H
(1-3)	48I	F523	48I
(1-3)	48J	F523	48J
(1-3)	48K	F523	48K
(1-3)	48L	F523	48L
(1-3)	48M	F523	48M
(1-3)	48N	F523	48N
(1-3)	48O	F523	48O
(1-3)	48P	F523	48P
(1-3)	48Q	F523	48Q
(1-3)	48R	F523	48R
(1-3)	48S	F523	48S
(1-3)	48T	F523	48T
(1-3)	48U	F523	48U
(1-3)	48V	F523	48V
(1-3)	48W	F523	48W
(1-3)	48X	F523	48X
(1-3)	48Y	F523	48Y
(1-3)	48Z	F523	48Z

- NOTES:
- ALL INSTRUMENTS AND EQUIPMENT NUMBERS TO BE PREFIXED WITH "2VCS-" EXCEPT WHERE A DIFFERENT PREFIX IS SHOWN.
  - C.S. IDENTIFICATION NUMBERS ARE SHOWN IN SQUARES (TO BE PREFIXED WITH 630).
  - INSTRUMENT CONNECTIONS ARE 3/4" UNLESS OTHERWISE SHOWN.
  - ALL PIPING IS CLASS 151 UNLESS OTHERWISE NOTED.
  - INSTALL ADV 47A, 47B, 50A & 50B WITH FLOW UNDER THE SEAT. ALL OTHER ADV'S SHALL BE INSTALLED WITH FLOW OVER THE SEAT. IN ORDER TO ACCOMPLISH THIS FUNCTION THESE VALVES SHALL BE INSTALLED SUCH THAT THE DIRECTION OF THE FLOW ARROW ON THE VALVE'S TAG IS IN THE SAME DIRECTION AS THE FLOW IN THE PIPING.
  - PROCESS PATH SHALL BE PIPED SYMMETRICALLY FOR THE 4 FILTER / DEMINERALIZERS.
  - STR 9A, 9B ELEMENT FOR SYSTEM FLUSH ONLY.
  - CHECK VALVE V139, V138 SHALL BE INSTALLED IN A VERTICAL RUN OF PIPING WITH FLOW DOWNWARDS.
  - DRAIN PIPING TO BE CONTINUOUSLY SLOPED TOWARDS RADIOACTIVE LIQUID WASTE SYSTEM.
  - S-D BENDS TO BE USED WHEREVER POSSIBLE IN LIEU OF ELBOWS AND DRAIN HEADER 2-VCS-818-434 AND 2-VCS-818-434.
  - THE RELIEF HEADER CONNECTION POINTS SHALL BE AS CLOSE TO 2-VCS-818A AND 785B AS POSSIBLE.
  - VALVE V268 IS A 3 WAY, NON ISOLABLE VALVE.
  - ALL ADV'S AND FV'S ASSOCIATED WITH FILTER DEMINERALIZER HAVE INTERLOCKS WITH LOGIC CONTROLLERS.
  - \* DENOTES EQUIPMENT SUPPLIED BY GE-NEO.
  - MILLIPORE FILTER HOLDER AND ASSOCIATED TYCON TUBING AND CONNECTORS ARE TEMPORARILY INSTALLED ONLY WHEN SAMPLING OF THE PRECOAT CONDENSATE RETURN IS DESIRED.
  - NO FLAG SHOWN ON CORRESPONDING DOCUMENT. COORDINATES PROVIDE INTERFACE LOCATION.
  - SEE TABLE FOR TYPICAL AIR OPERATED VALVE ARRANGEMENT THIS DWG (H-4).

SI APERTURE CARD

QA CAT II

PIPING & INSTRUMENTATION DIAGRAM  
REACTOR WATER CLEANUP SYSTEM

NINE MILE POINT NUCLEAR STATION-INIT 2  
NIAGARA MOHAWK POWER CORPORATION

STONE & WEBSTER ENGINEERING CORPORATION  
CHERRY HILL, N.J.

DRAWING NUMBER 12177-PID-37F-6

NO.	DESCRIPTION	DATE	BY	CHKD	APP'D	REVISION
1	ISSUED FOR COMPUTER DATA BASE UPDATE ONLY	11/15/84	E.F. CURRAN	E.F. CURRAN		
2	INCORPORATES ECN NO'S 248885A					
3	INCORPORATES ECN NO'S 248885A, 248885B, 248885C, 248885D, 248885E, 248885F, 248885G, 248885H, 248885I, 248885J, 248885K, 248885L, 248885M, 248885N, 248885O, 248885P, 248885Q, 248885R, 248885S, 248885T, 248885U, 248885V, 248885W, 248885X, 248885Y, 248885Z					
4	INCORPORATES ECN NO'S 248885A, 248885B, 248885C, 248885D, 248885E, 248885F, 248885G, 248885H, 248885I, 248885J, 248885K, 248885L, 248885M, 248885N, 248885O, 248885P, 248885Q, 248885R, 248885S, 248885T, 248885U, 248885V, 248885W, 248885X, 248885Y, 248885Z					
5	INCORPORATES ECN NO'S 248885A, 248885B, 248885C, 248885D, 248885E, 248885F, 248885G, 248885H, 248885I, 248885J, 248885K, 248885L, 248885M, 248885N, 248885O, 248885P, 248885Q, 248885R, 248885S, 248885T, 248885U, 248885V, 248885W, 248885X, 248885Y, 248885Z					
6	INCORPORATES ECN NO'S 248885A, 248885B, 248885C, 248885D, 248885E, 248885F, 248885G, 248885H, 248885I, 248885J, 248885K, 248885L, 248885M, 248885N, 248885O, 248885P, 248885Q, 248885R, 248885S, 248885T, 248885U, 248885V, 248885W, 248885X, 248885Y, 248885Z					

9305040433