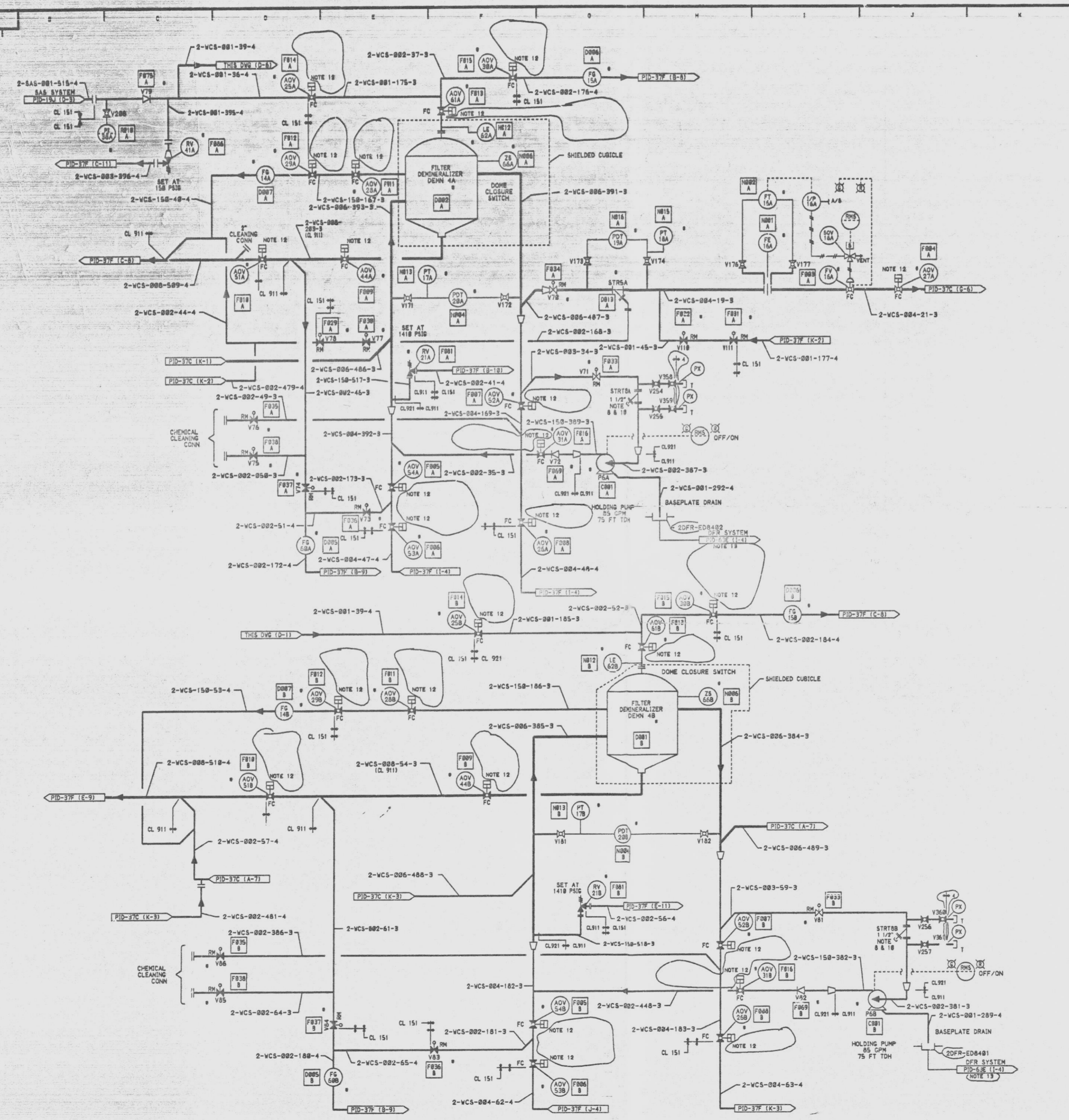
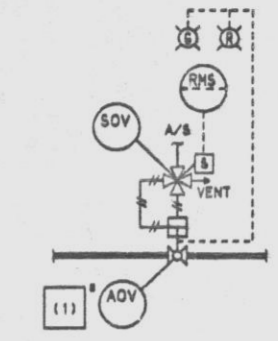


12177-PID-37D-6



TYPICAL AIR OPERATED VALVE ARRANGEMENT (SEE NOTE 10)



TABLE

AREA	ADV	(1)	SOV
(D-1)	25A	F814	25A
(D-2)	29A	F818	29A
(E-2)	28A	F811	28A
(F-1)	30A	F815	30A
(F-2)	61A	F819	61A
(D-3)	51A	F818	51A
(E-3)	44A	F809	44A
(G-4)	52A	F807	52A
(G-4)	31A	F809	31A
(E-5)	54A	F806	54A
(E-5)	53A	F806	53A
(G-5)	26A	F808	26A
(F-6)	25B	F814	25B
(H-6)	50B	F813	50B
(H-6)	61B	F813	61B
(E-7)	29B	F812	29B
(F-7)	28B	F811	28B
(D-8)	51B	F818	51B
(F-8)	44B	F809	44B
(H-9)	52B	F807	52B
(H-10)	31B	F809	31B
(G-10)	54B	F806	54B
(G-10)	53B	F806	53B
(I-11)	26B	F808	26B
(J-3)	27A	F804	27A

- NOTES:
- ALL INSTRUMENTS AND EQUIPMENT NUMBERS TO BE PREFIXED WITH "2WCS-" EXCEPT WHERE A DIFFERENT PREFIX IS SHOWN.
 - G.E. IDENTIFICATION NUMBERS ARE SHOWN IN SQUARES (TO BE PREFIXED WITH G6).
 - INSTRUMENT CONNECTIONS ARE 3/4" UNLESS OTHERWISE SHOWN.
 - ALL PIPING IS CLASS 921 UNLESS OTHERWISE NOTED.
 - ALL INSTRUMENTS ARE LOCATED IN RADIATION ZONE 4, 5 OR 6 UNLESS OTHERWISE NOTED.
 - INSTALL ADV25A, 25B, 52A, 52B, 54A, 54B, AND FV16A WITH FLOW UNDER THE SEAT. ALL OTHER ADV'S SHALL BE INSTALLED WITH THE FLOW OVER THE SEAT. IN ORDER TO ACCOMPLISH THIS FUNCTION, THESE VALVES SHALL BE INSTALLED SUCH THAT THE DIRECTION OF THE FLOW ARROW ON THE VALVE'S FLOW TAG IS IN THE SAME DIRECTION AS THE FLOW IN THE PIPING.
 - PROCESS PATH SHALL BE PIPED SYMMETRICALLY FOR THE 4 FILTER/DEMINERALIZERS.
 - STR78A, 88 ELEMENT FOR SYSTEM FLUSH ONLY.
 - ALL ADV'S AND FV'S ASSOCIATED WITH FILTER/DEMINERALIZER HAVE INTERLOCKS WITH LOGIC CONTROLLERS.
 - BLIND FLANGES (STR78A & 88) ARE FOR NORMAL PLANT OPERATION. "BLIND-OFF" FLANGES AND VALVES (V254, V255, V272 & V273) ARE TO BE TAGGED AND STORED FOR POSSIBLE FUTURE FLUSHING.
 - "# DENOTES EQUIPMENT SUPPLIED BY GE-NED.
 - SEE TABLE FOR TYPICAL AIR OPERATED VALVES ARRANGEMENT THIS DWD 07/83.
 - NO FLAG SHOWN ON CORRESPONDING DOCUMENT. COORDINATES PROVIDE INTERFACE LOCATION.

SI APERTURE CARD

QA CAT I & II

PIPING & INSTRUMENTATION DIAGRAM
 REACTOR WATER CLEANUP
 SYSTEM
 NINE MILE POINT NUCLEAR STATION UNIT 2
 NIAGARA MOHAWK POWER CORPORATION
 STONE & WEBSTER ENGINEERING CORPORATION
 CHERY HILL, N.J.

ISSUE	DESCRIPTION	CHKD	CORRECT	DATE	ISSUE	DESCRIPTION	CHKD	CORRECT	DATE
1	INCORPORATES EDC NO. 2100056	M1			1	ISSUED FOR COMPUTER DATA BASE UPDATE ONLY			
2	INCORPORATES EDC NO. 2100056	M1			2	INCORPORATES EDC NO. 2100056			

9305040421

D