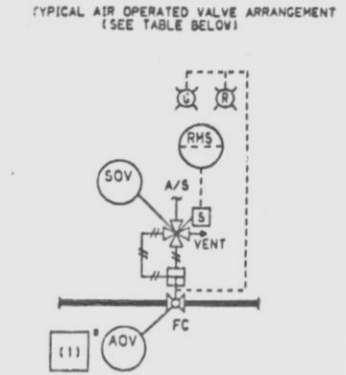


MARK NUMBER	VALVE DESCRIPTION	SIZE	NO. OF VALVES
ADV 23A, 23B, 23C	SUPR LED 3T		
ADV 23D, 23A, 23B	GENERAL		
ADV 23E, 23F, 23G	ELECTRIC		
ADV 23C, 23D	ELECTRIC		
V88, 87, 88, 97, 98	SUPPLIED BY GENERAL		
V188, 187, 188, 189	GENERAL		
V133, 333, 336, 337	ELECTRIC		
V348, 347, 344, 345	ELECTRIC		
MOV 198	VGW898-F-370	8"	1
MOV 188	VGW898-C-370	4"	1
MOV 118	VGW898-C-370	8"	1
V51, 52, 53, 54, 63, 64	VCS158-F-3	3/4"	41
V55, 56, 57, 68, 168			
V52, 63, 168, 169			
V88, 187, 188, 189			
V188, 187, 188, 189			
V156, 157, 188, 189			
V252, 253, 338, 339			
V342, 343			
V59, 64, 151, 222	VCS868-D-4	3/4"	6
V378, 382			
V69	VGW898-F-3T	4"	1
V87, 188	VCS158-D-3	3/4"	1



AREA	ADV	(1)	SOV
(J-9)	27D	F84	27D
(H-11)	23A	F81	23A
(H-2)	23B	F81	23B
(H-3)	23D	F81	23D
(H-4)	23C	F81	23C
(J-1)	22A	F83	22A
(J-2)	22B	F83	22B
(J-3)	22D	F83	22D
(J-4)	22C	F83	22C
(I-8)	27C	F84	27C
(G-7)	27B	F84	27B

- NOTES:
1. ALL INSTRUMENTS AND EQUIPMENT NUMBERS TO BE PREFIXED WITH "2WCS-" EXCEPT WHERE A DIFFERENT PREFIX IS SHOWN. AN ASTERISK (*) WILL REPLACE THE DASH (-) IN THE PREFIX FOR EQUIPMENT OR INSTRUMENTS WHICH ARE A PART OF NUCLEAR SAFETY FEATURE SYSTEMS.
 2. GENERAL ELECTRIC IDENTIFICATION NUMBERS ARE SHOWN IN SQUARES. (TO BE PREFIXED WITH G33 OR G36).
 3. INSTRUMENT CONNECTIONS ARE 3/4" EXCEPT WHERE SHOWN OTHERWISE. (SEE NOTE 11).
 4. ALL PIPING IS CLASS 921 UNLESS SHOWN OTHERWISE.
 5. RV141 & 142 ARE PROVIDED WITH HEAT EXCHANGER AND ARE SET AT 1410 PSIG & 150 PSIG RESPECTIVELY.
 6. INSTRUMENTS LOCATED IN RADIATION ZONE 4, 5 OR 6 UNLESS OTHERWISE NOTED.
 7. CHEMICAL CLEANING CONNECTIONS DO NOT REQUIRE VALVES.
 8. LOCATE CHEMICAL CLEANING CONNECTION TO PROVIDE OPTIMUM CLEANING OF PIPING.
 9. SAMPLE CONNECTION SHALL BE BRANCH CONNECTION FROM THE SIDE (NOT BOTTOM) OF MAIN PROCESS PIPING.
 10. "FEIS" SHALL BE AT A DISTANCE OF AT LEAST 20 PIPE DIAMETERS FROM V69.
 11. TEMPERATURE CONNECTIONS ARE 1/4" UNLESS SHOWN OTHERWISE.
 12. PROCESS PATH SHALL BE PIPED SYMMETRICALLY FOR THE 4 FILTER/DENIMERALIZERS.
 13. INSTALL ADV22A, 22B, 22C, 22D, 23A, 23B, 23C, 23D, FV169, 16C AND 16D WITH FLOW UNDER THE SEAT. ALL OTHER ADV'S SHALL BE INSTALLED WITH FLOW OVER THE SEAT. IN ORDER TO ACCOMPLISH THIS FUNCTION, THESE VALVES SHALL BE INSTALLED SUCH THAT THE DIRECTION OF THE FLOW ARROW ON THE VALVE'S TAG IS IN THE SAME DIRECTION AS THE FLOW IN THE PIPING.
 14. ALL ADV'S ASSOCIATED WITH FILTER DENIMERALIZER HAVE INTERLOCKS WITH LOGIC CONTROLLERS.
 15. 2WCS-MOV188 AND 187 SHALL BE DE-ENERGIZED DURING NORMAL PLANT OPERATION TO PRECLUDE THE POSSIBILITY OF SPURIOUS OPERATION DURING A CONTROL ROOM FIRE (APPENDIX A).
 16. * DENOTES EQUIPMENT SUPPLIED BY GE-MED.
 17. - DENOTES DISSIMILAR METAL WELD.
 18. DELETED.
 19. SEE TABLE FOR TYPICAL AIR OPERATED VALVES ARRANGEMENT THIS DWG 19-31.
 20. NO FLAG SHOWN ON CORRESPONDING DOCUMENT. COORDINATES PROVIDE INTERFACE LOCATION.

SI
APERTURE
CARD
QA CAT I & II

NINE MILE POINT
NUCLEAR STATION - UNIT 2
SCRIBA, N.Y.
PIPING & INSTRUMENTATION DIAGRAM
REACTOR WATER CLEANUP
SYSTEM

REV	DATE	DESCRIPTION OF REVISION	BY	CHKD	DATE	DESCRIPTION OF REVISION	BY	CHKD	DATE	DESCRIPTION OF REVISION	BY	CHKD	DATE	DESCRIPTION OF REVISION
11	1-5-91	ECN WCS-887A & WCS-668 WERE INCORPORATED IN IMPROPER SEQUENCE. THIS REMOVES VALVE 2WCS-V488 PER ECN WCS-688.	MAV	MI	1/4									
10	1-3-91	INCORPORATES NEW BORDER INCORPORATES ECN NO 2808487A MOD NO PH27684X885	KSB	RJB	BAL									
9	3-31-89	INCORPORATES ECN NO. 2808056	NSK	RSB										

9305040418