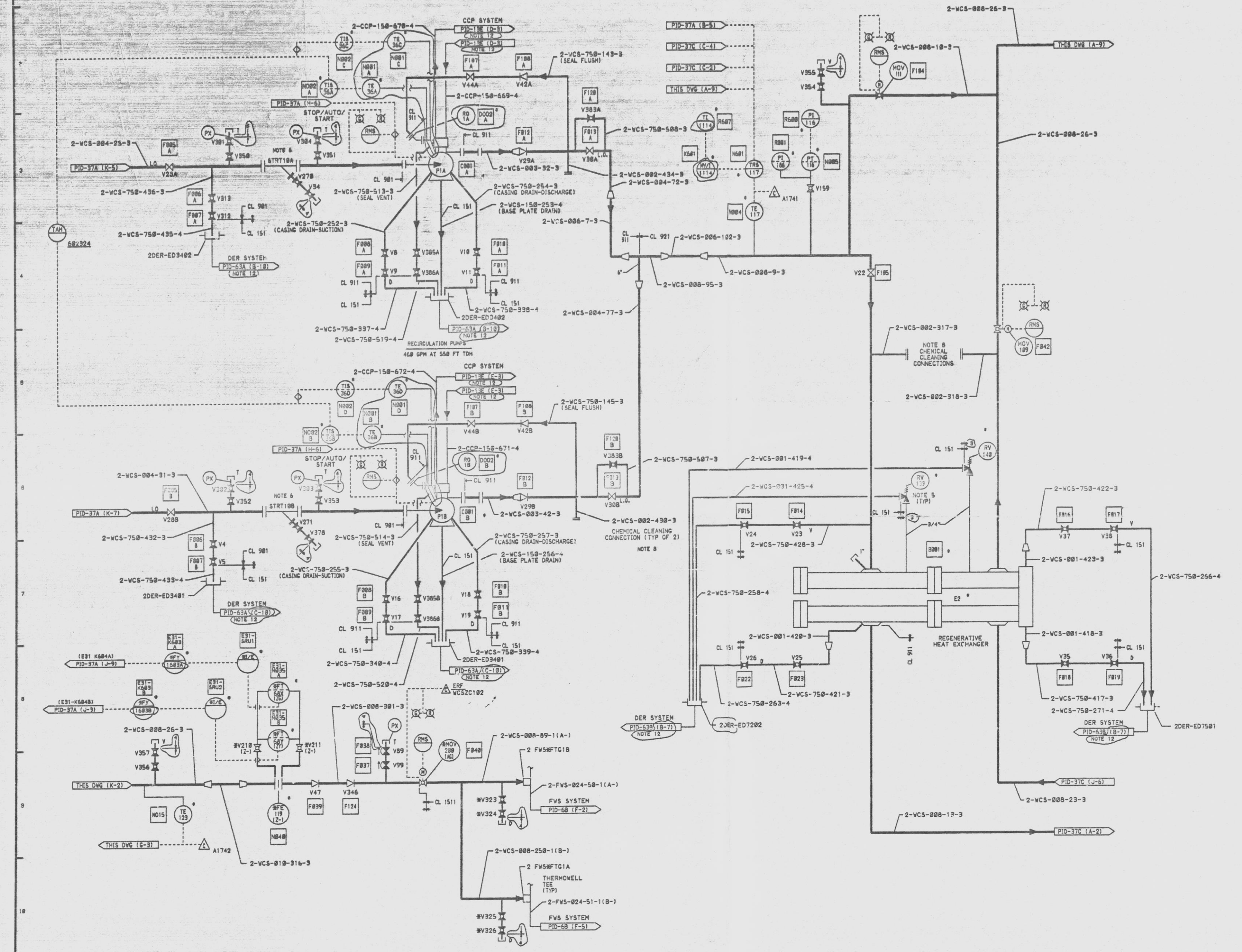


12177-PID-378-9

MARK NUMBER	VALVE DESCRIPTION	SIZE	NO. OF VALVES
MOV209	VCV099-C-170	8"	1
MOV209	VCV099-C-170	8"	1
V15, 16, 17, 18, 19, 20, 21, 22, 23, 24, 25, 26, 27, 28, 29, 30, 31, 32, 33, 34, 35, 36, 37, 38, 39, 40, 41, 42, 43, 44, 45, 46, 47, 48, 49, 50, 51, 52, 53, 54, 55, 56, 57, 58, 59, 60, 61, 62, 63, 64, 65, 66, 67, 68, 69, 70, 71, 72, 73, 74, 75, 76, 77, 78, 79, 80, 81, 82, 83, 84, 85, 86, 87, 88, 89, 90, 91, 92, 93, 94, 95, 96, 97, 98, 99, 100	V05150-F-3	3/4"	41
V22	VCV099-F-31	8"	1
V23A, B, 18A, B	VCV099-F-31	8"	4
V23A, B	VCV099-D-3M	8"	4
V34, 270, 271, 378	V05150-F-3	1 1/2"	4
V42A, B	VCV150-F-3	1 1/2"	4
V44A, B	V05150-F-3	3/4"	4
V47, 343	VCV099-D-3T	8"	2
V09, 29	V05150-F-3	1 1/2"	4
V23, 24, 25, 26	V05150-F-2	3/4"	4



- NOTES:
- ALL INSTRUMENTS AND EQUIPMENT NUMBERS TO BE PREFIXED WITH "WCS-" EXCEPT WHERE A DIFFERENT PREFIX IS SHOWN. AN ASTERISK (\*) WILL REPLACE THE DASH (-) IN THE PREFIX FOR EQUIPMENT OR INSTRUMENTS WHICH ARE A PART OF NUCLEAR SAFETY FEATURE SYSTEMS.
  - GENERAL ELECTRIC IDENTIFICATION NUMBERS ARE SHOWN IN SQUARES. (TO BE PREFIXED WITH 633).
  - INSTRUMENT PRESSURE, VENT, TEST, AND DRAIN CONNECTIONS ARE 3/4" EXCEPT WHERE SHOWN OTHERWISE.
  - ALL PIPING IS CLASS 921 UNLESS SHOWN OTHERWISE.
  - RELIEF VALVES RV139, 140 PROVIDED WITH ASSOCIATED EXCHANGER ARE SET AT 1410 PSIG.
  - STRT 10A AND 10B TO BE REPLACED BY CL3 SPOOL PIECE PRIOR TO SYSTEM TURNOVER TO NMP.
  - INSTRUMENTS LOCATED IN RADIATION ZONE 4, 5 OR 6 UNLESS OTHERWISE NOTED.
  - CHEMICAL CLEANING CONNECTIONS DO NOT REQUIRE VALVES. LINES 1" AND SMALLER WHICH ARE PART OF THE REACTOR COOLANT PRESSURE BOUNDARY SHALL BE SAFETY CLASS 2.
  - \* DENOTES EQUIPMENT SUPPLIED BY GE-NED.
  - TEST CONNECTION SHALL BE BRANCH CONNECTION FROM SIDE OR TOP OF MAIN PROCESS PIPING.
  - NO FLAG SHOWN ON CORRESPONDING DOCUMENT. COORDINATES PROVIDE INTERFACE LOCATION.

SI  
APERTURE  
CARD

NUCLEAR SAFETY RELATED  
QA CAT I, II

PIPING & INSTRUMENTATION DIAGRAM  
REACTOR WATER CLEANUP  
SYSTEM

NINE MILE POINT NUCLEAR STATION-UNIT 2  
NIAGARA MOHAWK POWER CORPORATION  
STONE & WEBSTER ENGINEERING CORPORATION  
CHERRY HILL, N.J.

REV	DATE	DESCRIPTION	BY	CHKD	APP'D
1		ISSUED FOR COMPUTER DATA BASE UPDATE ONLY			
2		INCORPORATES ECH NO. 5-869			
3		INCORPORATES ECH NO. 5-869			
4		INCORPORATES ECH NO. 5-869			
5		INCORPORATES ECH NO. 5-869			
6		INCORPORATES ECH NO. 5-869			
7		INCORPORATES ECH NO. 5-869			
8		INCORPORATES ECH NO. 5-869			
9		INCORPORATES ECH NO. 5-869			
10		INCORPORATES ECH NO. 5-869			

9305040417