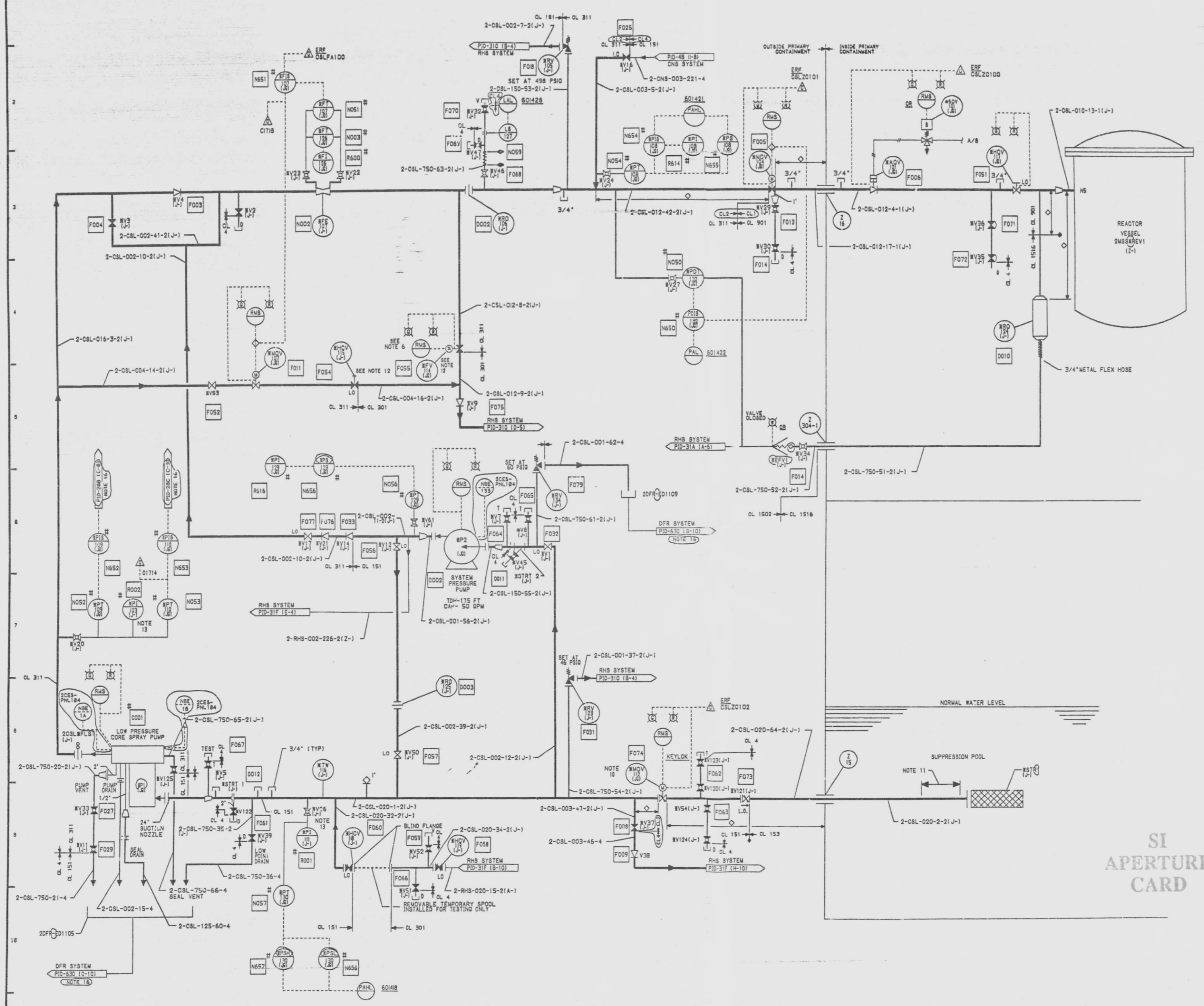


12177-PID-32A-B



MARK NUMBER	VALVE DESCRIPTION	SIZE	NO. OF VALVES
MOV101	V0800-E-1MO	1"	1
MOV104	V0800-O-1ZOO	1"	1
MOV107	V0800-O-2KO	4"	1
MOV112	V0800-B-2RO	20"	1
MOV117	V0800-O-1MO	1"	1
HCV118	V0800-B-2RO	20"	1
MOV119	V0800-B-2RO	20"	1
V1, 3, 15, 17, 19, 122	V0800-O-2	2"	6
V2, 35, 51	V0800-O-2	3/4"	3
V4	V0800-B-2K	1"	1
V5, 7, 11, 20, 22	V0800-O-2	3/4"	20
V3, 4, 14, 17, 21, 24	V0800-O-2	3/4"	1
V54, 61, 120, 125	V0800-O-2	3/4"	1
V9	V0800-E-2KO	1"	1
V14, 21	V0800-H-2	2"	2
V16	V0800-O-2K	3"	1
V29, 30, 123, 124	V0800-F-2	3/4"	4
V34	V0800-H-2	3/4"	1
V35, 36	V0800-B-2	3/4"	2
V37	V0800-F-2K	3"	1
V38	V0800-H-4K	3"	1
V53	V0800-O-2K	4"	1
V121	V0800-B-2ZEO	20"	1

- NOTES:
- ALL INSTRUMENT AND EQUIPMENT NUMBERS TO BE PREFIXED WITH "OSL-" EXCEPT WHERE A DIFFERENT PREFIX IS SHOWN. AN ASTERISK (*) WILL REPLACE THE DASH (-) IN THE PREFIX FOR EQUIPMENT OR INSTRUMENTS WHICH ARE A PART OF NUCLEAR SAFETY FEATURE SYSTEMS.
 - O.E. IDENTIFICATION NUMBERS ARE SHOWN IN SQUARES. (TO BE PREFIXED BY E21 UNLESS OTHERWISE PREFIXED.)
 - ALL INSTRUMENT LINES INSIDE DRYWELL TO BE 3/4" UNLESS OTHERWISE NOTED.
 - ALL LOCAL VENTS, DRAINS, SAMPLE CONNECTIONS, PRESSURE CONNECTIONS, FLOW TAPS, TEST CONNECTIONS SHALL BE 3/4".
 - VALVE POSITIONS ARE SHOWN FOR NORMAL OPERATION OF THE PLANT. THE SYSTEM IS ON STANDBY READY TO START ON "LOCA" SIGNALS.
 - THE PACKING GLAND OF VALVE 20SLWV114 SHALL BE LOCATED ON THE UPSTREAM SIDE OF VALVE DISC.
 - LINES ONE INCH AND SMALLER WHICH ARE PART OF THE REACTOR COOLANT PRESSURE BOUNDARY SHALL BE SAFETY CLASS 2, UNLESS OTHERWISE NOTED.
 - ◆ DENOTES DISSIMILAR METAL WELD.
 - FOR PUMP CAPACITY AND TDH REFER TO 15.32-001-012 LPDS PUMP PERFORMANCE CURVE.
 - CLOW VALVE 20SLWV112 SHALL REMAIN OPEN DURING PLANT SHUTDOWN SYSTEM FLOW TESTING USING RHR CROSS CONNECTION. THIS WILL PREVENT EXCEEDING ALLOWABLE DIFFERENTIAL PRESSURE IN THE REVERSE SEATING DIRECTION.
 - THIS SPOOL PIECE IS CLASS 153, SCH 100.
 - VALVES RHOV-115 & RHOV-114 ARE THROTTLED TO MAINTAIN FLOWS OF 1000 GPM & 7500 RESPECTIVELY.
 - THIS INSTRUMENT REQUIRES SEISMIC QUALIFICATION AND MAY BE PURCHASED, INSTALLED, TESTED AND CALIBRATED TO QUALITY ASSURANCE CATEGORY II REQUIREMENTS.
 - ◆ DENOTES EQUIPMENT SUPPLIED BY GE-NEO.
 - ◆ DENOTES MINIMUM DISTANCE FOR INSTALLATION.
 - NO FLAG SHOWN ON CORRESPONDING DOCUMENT. COORDINATES PROVIDE INTERFACE LOCATION.

SI APERTURE CARD

07-141-9L

NUCLEAR SAFETY RELATED
QA CAT I, II

PIPING & INSTRUMENTATION DIAGRAM
LOW PRESSURE
CORE SPRAY

NINE MILE POINT NUCLEAR STATION-UNIT 2
NIAGARA MOHAWK POWER CORPORATION

STONE & WEBSTER ENGINEERING CORPORATION
CHERRY HILL, N.J.

DRAWING NUMBER
12177-PID-32A-B

ISSUE	DESCRIPTION	CHKD	CORRECT	DATE	ISSUE	DESCRIPTION	CHKD	CORRECT	DATE	ISSUE	DESCRIPTION	CHKD	CORRECT	DATE	ISSUE	DESCRIPTION	CHKD	CORRECT	DATE	
1	INCORPORATES EON NO. CBL-037				2	INCORPORATES EON NO. CBL-036				3	AS TESTED ISSUE, INCORPORATES EON NO. CBL-028-032, 401-003, 500, 501, 501				4	ISSUED FOR COMPUTER DATA BASE UPDATE ONLY.				

9305040331

THIS DRAWING CREATED ELECTRONICALLY