

FEEDWATER PUMP & DRIVE LUBE OIL SYSTEM - VALVE TABLE

MARK NUMBER	VALVE DESCRIPTION	SIZE	NL. OF VALVES
V1A, B, C	BY GEAR MFG	2-1/2"	3
V2A, B, C	BY GEAR MFG	2-1/2"	3
V3A, B, C V4A, B, C	BY GEAR MFG	3"	6
V5A, B, C V6A, B, C V7A, B, C V8A, B, C V9A, B, C V10A, B, C	YOS868-E-4	3/4"	18
V11A, B, C V12A, B, C V13A, B, C V14A, B, C V15A, B, C V16A, B, C	YOS868-D-4	1/2"	6
V17A, B, C V18A, B, C V19A, B, C V20A, B, C	YOS868-D-4	3/4"	12
V21A, B, C V22A, B, C	BY GEAR MFG	1/2"	6
V23A, B, C V24A, B, C	BY GEAR MFG	3/4"	3
V25A, B, C V26A, B, C	YOS868-E-4	1/2"	6
V27A, B, C V28A, B, C	YOS868-D-4	1"	3

SI APERTURE CARD

- NOTES:
1. ALL INSTRUMENT & EQUIPMENT NUMBERS TO BE PREFIXED WITH "2FVL" EXCEPT WHERE A DIFFERENT PREFIX IS SHOWN.
  2. ALL PIPING TO BE CLASS B12 BUT ALL FLANGES TO BE 150# SLIP-ON UNLESS OTHERWISE NOTED.
  3. DIRECT SHAFT DRIVEN PUMP.
  4. ALL PRESSURE, VENT & DRAIN CONNECTIONS TO BE 3/4" UNLESS OTHERWISE NOTED.
  5. \*\* DENOTES BY GEAR/MOTOR VENDOR.
  6. VENDOR SUPPLIED PIPING TO BE HYDRO TESTED WITH SYSTEM PIPING. SEE INSTRUCTIONS.
  7. CHECK VALVE IS TO HAVE .084 DIA HOLE DRILLED IN DISC FOR PRIMING SHAFT DRIVEN PUMP WITH AUX PUMP.
  8. NO FLAG SHOWN ON CORRESPONDING DOCUMENT. COORDINATES PROVIDE INTERFACE LOCATION.

9305040298

QA CAT II

PIPING & INSTRUMENTATION DIAGRAM  
FEEDWATER SYSTEM

NINE MILE POINT NUCLEAR STATION-UNIT 2  
NIAGARA MOHAWK POWER CORPORATION

STONE & WEBSTER ENGINEERING CORPORATION  
CHERRY HILL, N.J.

DRAWING NUMBER 12177-PID-60-8

DESIGNED BY R. SILVER  
CHECKED BY F. CURRAN

DATE 11-15-80

LEVEL 1

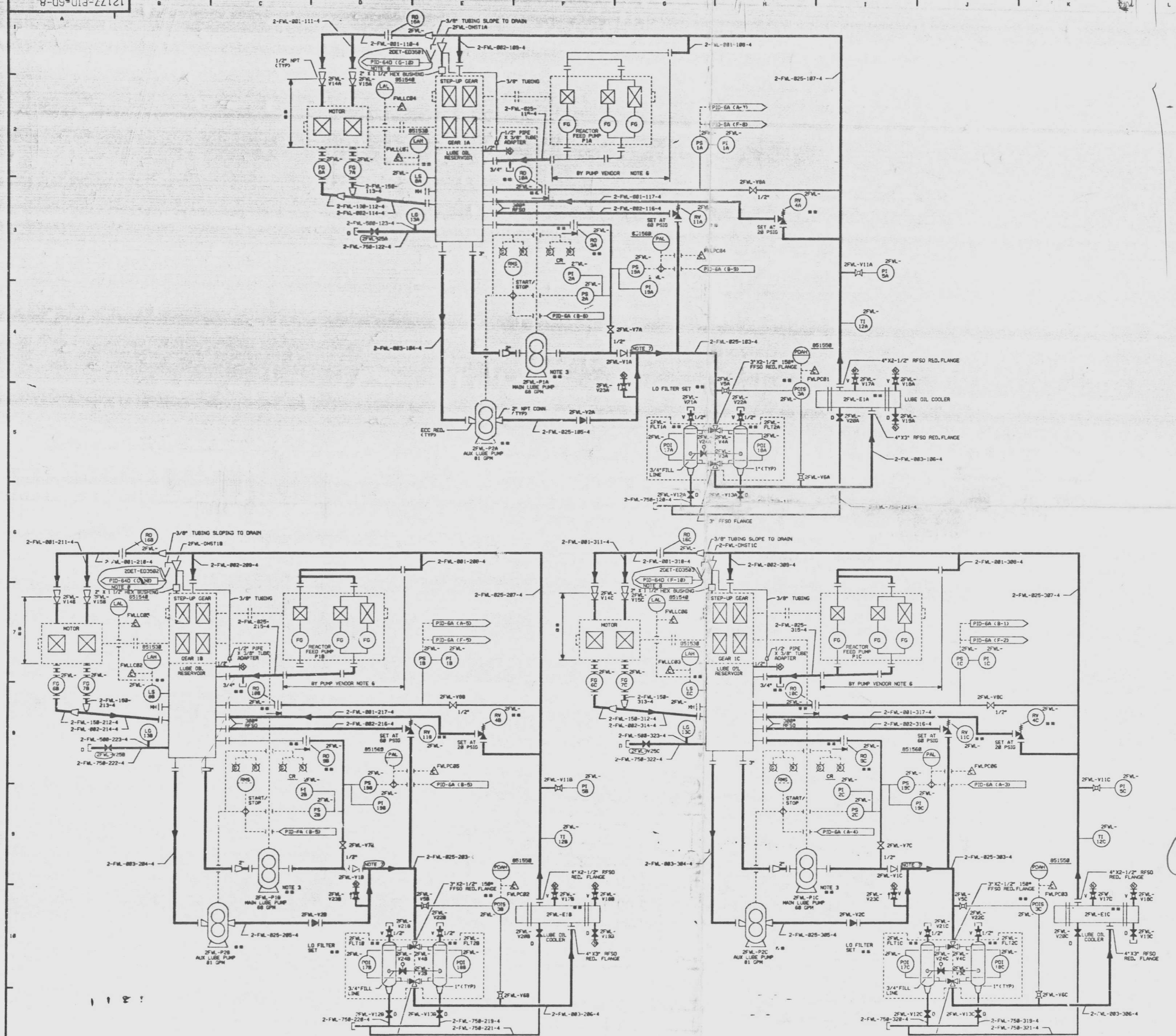
DATE 11-15-80

DATE 11-15-80

DATE 11-15-80

FOR INFORMATION ONLY

07-10-91



ISSUE	DESCRIPTION	DATE	BY	CHKD	APP'D	REVISION
1	ISSUED FOR COMPUTER DATA BASE UPDATE ONLY.					

REV	DESCRIPTION	DATE	BY	CHKD	APP'D
1	ISSUED FOR COMPUTER DATA BASE UPDATE ONLY.				

9305040298