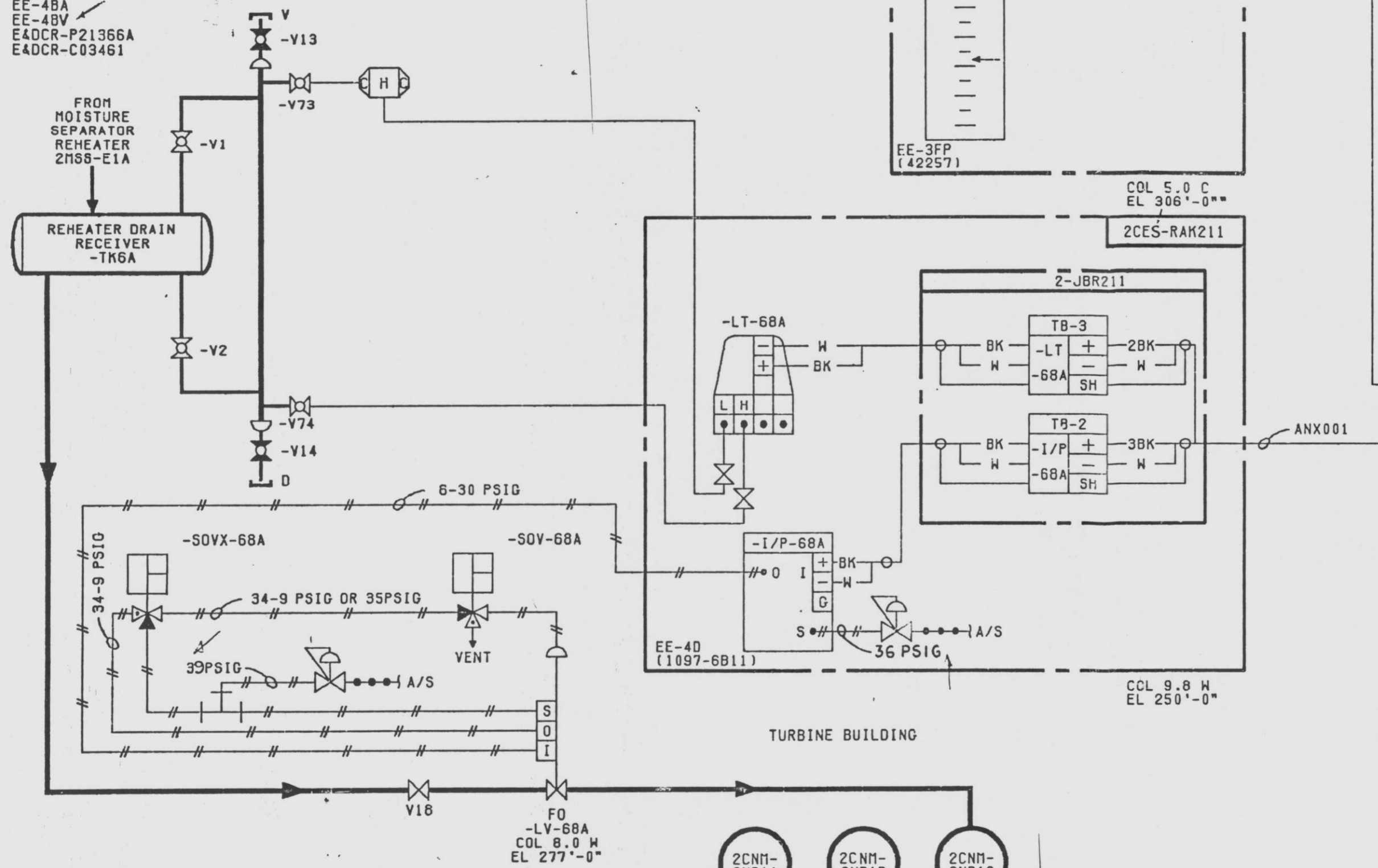


REFERENCES:

2DSR-68
FSK-32-6A
LSK-32-6B
ESK-101HA516
EE-3J
EE-3AJ
EE-3FP
EE-4D
EE-4BA
EE-4BV
E4DCR-P21366A
E4DCR-C03461

0007.159-451-232
0007.510-979-516
0007.510-979-526
0007.510-979-671
0007.510-414-148

(CD-84-20)
(42257 SH11)
(42257 SH1)
(42321 SH4)
(1097-6B11)



NOTES:

- FOR TEST PURPOSES ONLY-NOT TO BE USED FOR CONSTRUCTION.
- ALL INSTRUMENT AND EQUIPMENT NUMBERS ARE TO BE PREFIXED WITH "2DSR" EXCEPT WHERE A DIFFERENT PREFIX IS SHOWN.
- LOOP ACTION: LT-68A MONITORS REHEATER DRAIN RECEIVER - TANK 6A WATER LEVEL AND PROVIDES A LEVEL SIGNAL TO LC-68A, LSH-68A, AND COMPUTER VIA PHRS-68A, AND TO LI-68A VIA PHRS-68A AND E/IX-68A. LC-68A COMPARES THE LEVEL SIGNAL TO AN INTERNAL SETPOINT AND PROVIDES AN ERROR SIGNAL TO MODULATE LV-68A VIA E/IY-68A AND I/P-68A PROVIDED SOVX-68A IS DE-ENERGIZED AND SOV-68A IS ENERGIZED (SEE TL2DSR-035). LSH-68A ACTUATES ON HIGH WATER LEVEL ACTUATING LSHX-68A TO ENERGIZE COMPUTER AND ANNUNCIATOR ALARMS.
- NORMALLY OPEN (NO) CONTACTS OPEN ON HIGH WATER LEVEL TO ENERGIZE COMPUTER AND ANNUNCIATOR ALARMS.

DATE	DATE	DATE	DATE	DATE
PREPARED	PREPARED	PREPARED	PREPARED	PREPARED
APPROVED	APPROVED	APPROVED	APPROVED	APPROVED
4	3	2	1	0

2CES-IPNL204
4-20MADC
TB-204
701
702
2BK
W
ANX005
EE-3FP (42257)
COL 5.0 C
EL 306'-0"

2CES-RAK211
2-JBR211
TB-3
-LT-68A
+
-
2BK
W
TB-2
-I/P-68A
+
-
3BK
W
-I/P-68A
+
-
3BK
W
ANX001
EE-4D (1097-6B11)
COL 9.8 W
EL 250'-0"

2CEC*PNL730 BAY A
4-20MADC
4-20MADC
4-20MADC
4-20MADC
4-20MADC
4-20MADC
TB
16
17
18
19
20
21
22
23
24
T/C 119
EE-3AJ
J1 P1
V
W
20
H
O
P
C
D
J
6BK
6W
7BK
7W
8BK
8W
(-U01)
COL 13.0 AG
EL 288'-6"

SI APERTURE CARD

QA CAT II

TEST LOOP DIAGRAM
RHTR DRAIN RCVR TK6A HI LEVEL CONTROL
2DSR-LT-68A

NINE MILE POINT NUCLEAR STATION-UNIT 2
NIAGARA MOHAWK POWER CORPORATION

STONE & WEBSTER ENGINEERING CORPORATION

SHEET 1 OF 3
12177-TL2DSR-037

INFORMATION ONLY

9305040175

E

07-127-91

9305040175