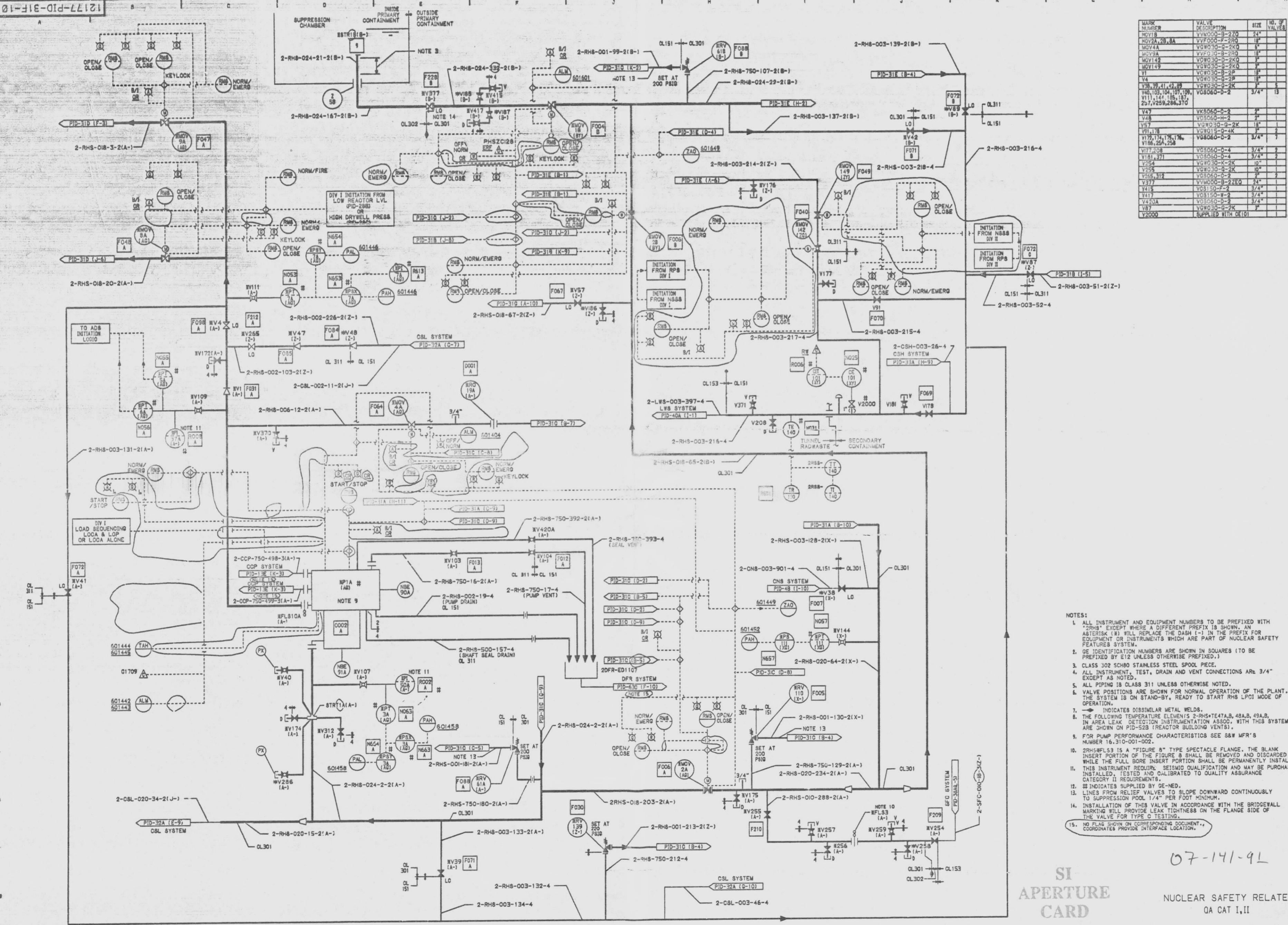


12177-PID-31F-10



MARK NUMBER	VALVE DESCRIPTION	SIZE	NO. OF VALVES
MOV18	VV1000-2-2Z	2 1/2"	1
MOV19	VV1000-2-2Z	2 1/2"	1
MOV20	VV1000-2-2Z	2 1/2"	1
MOV21	VV1000-2-2Z	2 1/2"	1
MOV22	VV1000-2-2Z	2 1/2"	1
MOV23	VV1000-2-2Z	2 1/2"	1
MOV24	VV1000-2-2Z	2 1/2"	1
MOV25	VV1000-2-2Z	2 1/2"	1
MOV26	VV1000-2-2Z	2 1/2"	1
MOV27	VV1000-2-2Z	2 1/2"	1
MOV28	VV1000-2-2Z	2 1/2"	1
MOV29	VV1000-2-2Z	2 1/2"	1
MOV30	VV1000-2-2Z	2 1/2"	1
MOV31	VV1000-2-2Z	2 1/2"	1
MOV32	VV1000-2-2Z	2 1/2"	1
MOV33	VV1000-2-2Z	2 1/2"	1
MOV34	VV1000-2-2Z	2 1/2"	1
MOV35	VV1000-2-2Z	2 1/2"	1
MOV36	VV1000-2-2Z	2 1/2"	1
MOV37	VV1000-2-2Z	2 1/2"	1
MOV38	VV1000-2-2Z	2 1/2"	1
MOV39	VV1000-2-2Z	2 1/2"	1
MOV40	VV1000-2-2Z	2 1/2"	1
MOV41	VV1000-2-2Z	2 1/2"	1
MOV42	VV1000-2-2Z	2 1/2"	1
MOV43	VV1000-2-2Z	2 1/2"	1
MOV44	VV1000-2-2Z	2 1/2"	1
MOV45	VV1000-2-2Z	2 1/2"	1
MOV46	VV1000-2-2Z	2 1/2"	1
MOV47	VV1000-2-2Z	2 1/2"	1
MOV48	VV1000-2-2Z	2 1/2"	1
MOV49	VV1000-2-2Z	2 1/2"	1
MOV50	VV1000-2-2Z	2 1/2"	1
MOV51	VV1000-2-2Z	2 1/2"	1
MOV52	VV1000-2-2Z	2 1/2"	1
MOV53	VV1000-2-2Z	2 1/2"	1
MOV54	VV1000-2-2Z	2 1/2"	1
MOV55	VV1000-2-2Z	2 1/2"	1
MOV56	VV1000-2-2Z	2 1/2"	1
MOV57	VV1000-2-2Z	2 1/2"	1
MOV58	VV1000-2-2Z	2 1/2"	1
MOV59	VV1000-2-2Z	2 1/2"	1
MOV60	VV1000-2-2Z	2 1/2"	1
MOV61	VV1000-2-2Z	2 1/2"	1
MOV62	VV1000-2-2Z	2 1/2"	1
MOV63	VV1000-2-2Z	2 1/2"	1
MOV64	VV1000-2-2Z	2 1/2"	1
MOV65	VV1000-2-2Z	2 1/2"	1
MOV66	VV1000-2-2Z	2 1/2"	1
MOV67	VV1000-2-2Z	2 1/2"	1
MOV68	VV1000-2-2Z	2 1/2"	1
MOV69	VV1000-2-2Z	2 1/2"	1
MOV70	VV1000-2-2Z	2 1/2"	1
MOV71	VV1000-2-2Z	2 1/2"	1
MOV72	VV1000-2-2Z	2 1/2"	1
MOV73	VV1000-2-2Z	2 1/2"	1
MOV74	VV1000-2-2Z	2 1/2"	1
MOV75	VV1000-2-2Z	2 1/2"	1
MOV76	VV1000-2-2Z	2 1/2"	1
MOV77	VV1000-2-2Z	2 1/2"	1
MOV78	VV1000-2-2Z	2 1/2"	1
MOV79	VV1000-2-2Z	2 1/2"	1
MOV80	VV1000-2-2Z	2 1/2"	1
MOV81	VV1000-2-2Z	2 1/2"	1
MOV82	VV1000-2-2Z	2 1/2"	1
MOV83	VV1000-2-2Z	2 1/2"	1
MOV84	VV1000-2-2Z	2 1/2"	1
MOV85	VV1000-2-2Z	2 1/2"	1
MOV86	VV1000-2-2Z	2 1/2"	1
MOV87	VV1000-2-2Z	2 1/2"	1
MOV88	VV1000-2-2Z	2 1/2"	1
MOV89	VV1000-2-2Z	2 1/2"	1
MOV90	VV1000-2-2Z	2 1/2"	1
MOV91	VV1000-2-2Z	2 1/2"	1
MOV92	VV1000-2-2Z	2 1/2"	1
MOV93	VV1000-2-2Z	2 1/2"	1
MOV94	VV1000-2-2Z	2 1/2"	1
MOV95	VV1000-2-2Z	2 1/2"	1
MOV96	VV1000-2-2Z	2 1/2"	1
MOV97	VV1000-2-2Z	2 1/2"	1
MOV98	VV1000-2-2Z	2 1/2"	1
MOV99	VV1000-2-2Z	2 1/2"	1
MOV100	VV1000-2-2Z	2 1/2"	1

- NOTES:
- ALL INSTRUMENT AND EQUIPMENT NUMBERS TO BE PREFIXED WITH "2RHS" EXCEPT WHERE A DIFFERENT PREFIX IS SHOWN. AN ASTERISK (\*) WILL REPLACE THE DASH (-) IN THE PREFIX FOR EQUIPMENT OR INSTRUMENTS WHICH ARE PART OF NUCLEAR SAFETY FEATURES SYSTEM.
  - SEE IDENTIFICATION NUMBERS ARE SHOWN IN SQUARES (TO BE PREFIXED BY E12 UNLESS OTHERWISE PREFIXED.)
  - CLASS 302 SCH80 STAINLESS STEEL SPOOL PIECE.
  - ALL INSTRUMENT, TEST, DRAIN AND VENT CONNECTIONS ARE 3/4" EXCEPT AS NOTED.
  - ALL PIPING IS CLASS 311 UNLESS OTHERWISE NOTED.
  - VALVE POSITIONS ARE SHOWN FOR NORMAL OPERATION OF THE PLANT. THE SYSTEM IS ON STAND-BY, READY TO START RHS LPOI MODE OF OPERATION.
  - INDICATES DISSIMILAR METAL WELDS.
  - THE FOLLOWING TEMPERATURE ELEMENTS 2-RHS-TE47A,B,48A,B,49A,B, IN AREA LEAK DETECTION INSTRUMENTATION ASSOC. WITH THIS SYSTEM ARE SHOWN ON PID-52B (REACTOR BUILDING VENTS).
  - FOR PUMP PERFORMANCE CHARACTERISTICS SEE S&W MFR'S NUMBER 15-310-001-002.
  - 2RHS-FL53 IS A "FIGURE 8" TYPE SPECTACLE FLANGE. THE BLANK INSERT PORTION OF THE FIGURE 8 SHALL BE REMOVED AND DISCARDED WHILE THE FULL BORE INSERT PORTION SHALL BE PERMANENTLY INSTALLED.
  - THIS INSTRUMENT REQUIRES SETTING QUALIFICATION AND MAY BE PURCHASED, INSTALLED, TESTED AND CALIBRATED TO QUALITY ASSURANCE CATEGORY II REQUIREMENTS.
  - INDICATES SUPPLIED BY GE-NE.
  - LINE FROM RELIEF VALVES TO SLOPE DOWNWARD CONTINUOUSLY TO SUPPRESSION POOL 1/4" PER FOOT MINIMUM.
  - INSTALLATION OF THIS VALVE IN ACCORDANCE WITH THE BRIDGEWALL MARKING WILL PROVIDE LEAK TIGHTNESS ON THE FLANGE SIDE OF THE VALVE FOR TYPE C TESTING.
  - NO FLAG SHOWN ON CORRESPONDING DOCUMENT, COORDINATOR PROVIDE INTERFACE LOCATION.

SI APERTURE CARD

07-141-9L  
NUCLEAR SAFETY RELATED  
QA CAT I,II

PIPING & INSTRUMENTATION DIAGRAM  
RESIDUAL HEAT REMOVAL  
NINE MILE POINT NUCLEAR STATION-UNIT 2  
NIAGARA MOHAWK POWER CORPORATION  
STONE & WEBSTER ENGINEERING CORPORATION  
CHERRY HILL, N.J.

12177-PID-31F-10

ISSUE	DESCRIPTION	CHKD	CORRECT	DATE	ISSUE	DESCRIPTION	CHKD	CORRECT	DATE	ISSUE	DESCRIPTION	CHKD	CORRECT	DATE	ISSUE	DESCRIPTION	CHKD	CORRECT	DATE
1	INCORPORATES ECN NO. RHS-64, 09.				1	INCORPORATES ECN NO. RHS-64				1	INCORPORATES ECN NO. 2408851				1	INCORPORATES ECN NO. RHS-626			
2	ARCH/CONC/STL				2	ARCH/CONC/STL				2	ARCH/CONC/STL				2	ARCH/CONC/STL			

9305040171