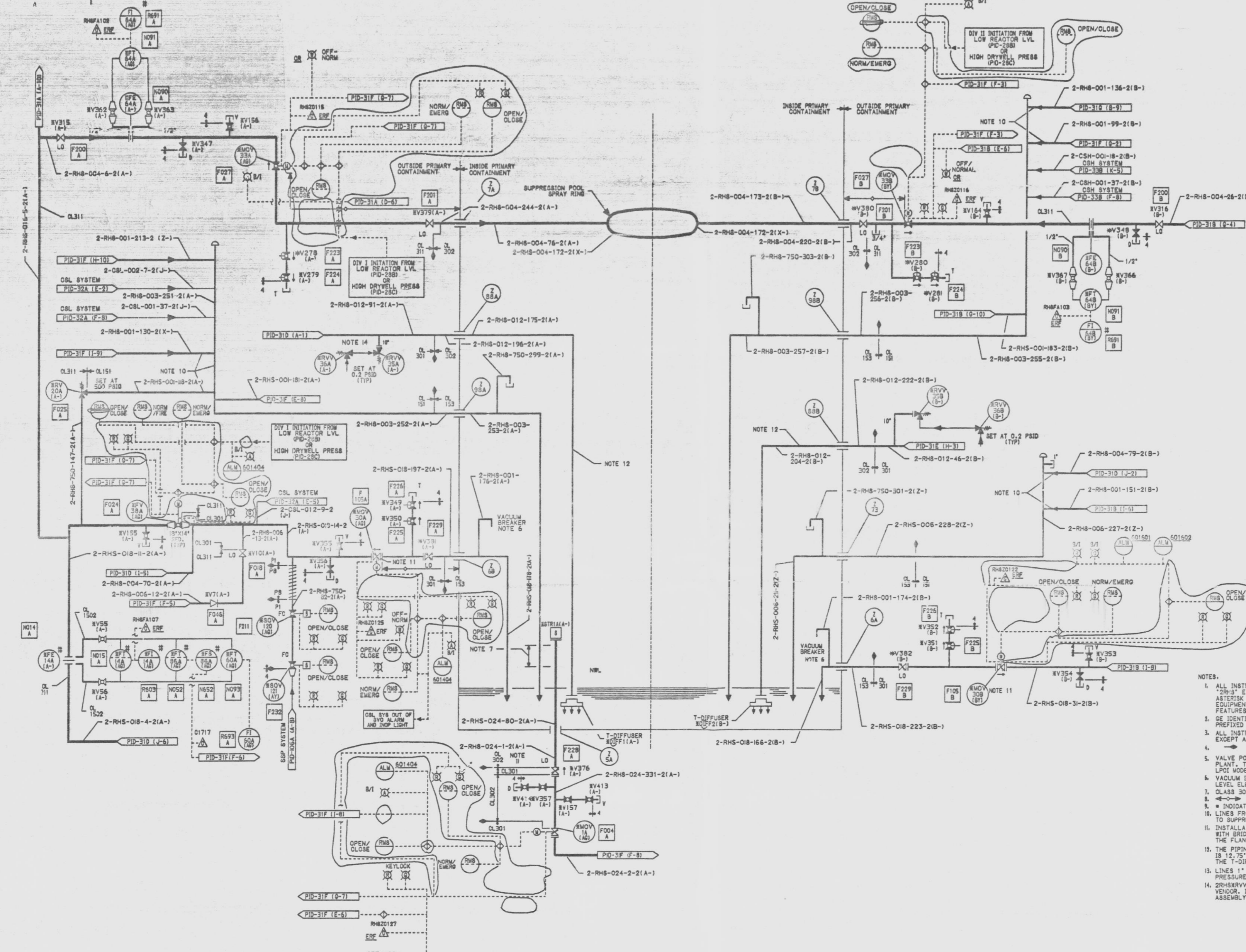


12177-PID-31C-7



MARK NUMBER	VALVE DESCRIPTION	SIZE	NO. OF VALVES
NOV1A	VV0000-B-220	24"	1
NOV2A	VV0000-C-220	18"	1
NOV3A	VV0000-D-220	18"	1
NOV3B	VV0000-E-220	18"	1
NOV120,121	VV0150-PD-220	3/4"	2
NOV240,241	VV0000-C-220	18"	1
V1	VV0000-B-220	18"	1
V10	VV0000-D-220	18"	1
V154,155,156	VV0000-D-220	3/4"	11
V157,158,159,160,161,162,163,164,165	VV0000-D-220	3/4"	14
V218,219,220,221	VV0150-B-2	3/4"	4
V218,219	VV0000-B-220	18"	2
V219	VV0000-B-220	18"	1
V220	VV0000-B-220	18"	1
V221	VV0000-B-220	18"	1
V222	VV0000-B-220	18"	1
V223	VV0000-B-220	18"	1
V224	VV0000-B-220	18"	1
V225	VV0000-B-220	18"	1
V226	VV0000-B-220	18"	1
V227	VV0000-B-220	18"	1
V228	VV0000-B-220	18"	1
V229	VV0000-B-220	18"	1
V230	VV0000-B-220	18"	1
V231	VV0000-B-220	18"	1
V232	VV0000-B-220	18"	1
V233	VV0000-B-220	18"	1
V234	VV0000-B-220	18"	1
V235	VV0000-B-220	18"	1
V236	VV0000-B-220	18"	1
V237	VV0000-B-220	18"	1
V238	VV0000-B-220	18"	1
V239	VV0000-B-220	18"	1
V240	VV0000-B-220	18"	1
V241	VV0000-B-220	18"	1
V242	VV0000-B-220	18"	1
V243	VV0000-B-220	18"	1
V244	VV0000-B-220	18"	1
V245	VV0000-B-220	18"	1
V246	VV0000-B-220	18"	1
V247	VV0000-B-220	18"	1
V248	VV0000-B-220	18"	1
V249	VV0000-B-220	18"	1
V250	VV0000-B-220	18"	1
V251	VV0000-B-220	18"	1
V252	VV0000-B-220	18"	1
V253	VV0000-B-220	18"	1
V254	VV0000-B-220	18"	1
V255	VV0000-B-220	18"	1
V256	VV0000-B-220	18"	1
V257	VV0000-B-220	18"	1
V258	VV0000-B-220	18"	1
V259	VV0000-B-220	18"	1
V260	VV0000-B-220	18"	1
V261	VV0000-B-220	18"	1
V262	VV0000-B-220	18"	1
V263	VV0000-B-220	18"	1
V264	VV0000-B-220	18"	1
V265	VV0000-B-220	18"	1
V266	VV0000-B-220	18"	1
V267	VV0000-B-220	18"	1
V268	VV0000-B-220	18"	1
V269	VV0000-B-220	18"	1
V270	VV0000-B-220	18"	1
V271	VV0000-B-220	18"	1
V272	VV0000-B-220	18"	1
V273	VV0000-B-220	18"	1
V274	VV0000-B-220	18"	1
V275	VV0000-B-220	18"	1
V276	VV0000-B-220	18"	1
V277	VV0000-B-220	18"	1
V278	VV0000-B-220	18"	1
V279	VV0000-B-220	18"	1
V280	VV0000-B-220	18"	1
V281	VV0000-B-220	18"	1
V282	VV0000-B-220	18"	1
V283	VV0000-B-220	18"	1
V284	VV0000-B-220	18"	1
V285	VV0000-B-220	18"	1
V286	VV0000-B-220	18"	1
V287	VV0000-B-220	18"	1
V288	VV0000-B-220	18"	1
V289	VV0000-B-220	18"	1
V290	VV0000-B-220	18"	1
V291	VV0000-B-220	18"	1
V292	VV0000-B-220	18"	1
V293	VV0000-B-220	18"	1
V294	VV0000-B-220	18"	1
V295	VV0000-B-220	18"	1
V296	VV0000-B-220	18"	1
V297	VV0000-B-220	18"	1
V298	VV0000-B-220	18"	1
V299	VV0000-B-220	18"	1
V300	VV0000-B-220	18"	1

- NOTES:
- ALL INSTRUMENT AND EQUIPMENT NUMBERS TO BE PREFIXED WITH "RHS" EXCEPT WHERE A DIFFERENT PREFIX IS SHOWN. AN ASTERISK (*) WILL REPLACE THE DASH (-) IN THE PREFIX FOR EQUIPMENT OR INSTRUMENTS WHICH ARE PART OF NUCLEAR SAFETY FEATURES SYSTEM.
 - GE IDENTIFICATION NUMBERS ARE SHOWN IN SQUARES (TO BE PREFIXED BY 612 UNLESS OTHERWISE PREFIXED).
 - ALL INSTRUMENT, TEST, DRAIN AND VENT CONNECTIONS ARE 3/4" EXCEPT AS NOTED.
 - INDICATES DISSIMILAR METAL WELD.
 - VALVE POSITIONS ARE SHOWN FOR NORMAL OPERATION OF THE PLANT. THE SYSTEM IS ON STANDBY, READY TO START RHE LEVEL ELEVATION.
 - VACUUM BREAKER LOCATED ABOVE MAXIMUM WATER LEVEL ELEVATION.
 - CLASS 302 SCH80 STAINLESS STEEL SPOOL PIECE.
 - INDICATES MINIMUM DISTANCE FOR INSTALLATION.
 - INDICATES EQUIPMENT SUPPLIED BY GE-HEW.
 - LINES FROM RELIEF VALVES TO SLOPE DOWNWARDS CONTINUOUSLY TO SUPPRESSION POOL 1/4" PER FOOT MINIMUM.
 - INSTALLATION OF 2RHS01576 AND 2RHS01576A AND B IN ACCORDANCE WITH BRIDGE WALL MARKINGS WILL PROVIDE LEAK TIGHTNESS ON THE FLANGED SIDE OF THE VALVES FOR TYPE O TESTING.
 - THE PIPING ASSEMBLY FROM THE PENETRATION TO THE T-DIFFUSER IS 12.75" OD X 1" WALL 30412 TP304 PIPING AND SUPPLIED BY THE T-DIFFUSER VENDOR UNDER NMP2-PS010.
 - LINES 1" AND SMALLER WHICH ARE PART OF THE REACTOR COOLANT PRESSURE BOUNDARY SHALL BE SAFETY CLASS 2.
 - 2RHS01576A AND 2RHS01576B ARE SUPPLIED AS ONE UNIT FROM VENDOR. INTERCONNECTING PIPING SUPPLIED AS PART OF THIS ASSEMBLY BY VENDOR.

07-141-9L

SI APERTURE CARD

NUCLEAR SAFETY RELATED
QA CAT I,II

PIPING & INSTRUMENTATION DIAGRAM
RESIDUAL HEAT REMOVAL

NINE MILE POINT NUCLEAR STATION-UNIT 2
NIAGARA MOHAWK POWER CORPORATION
STONE & WEBSTER ENGINEERING CORPORATION
CHERRY HILLS, N.J.

12177-PID-31C-7
DRAWING NUMBER
DESIGNED BY R. KLUS
DRAWN BY R. KLUS
CHECKED BY E.F. CURRAN
DATE 11/79

ISSUE	DESCRIPTION	DATE	BY	CHKD	APP'D	REVISION
1	ISSUED FOR COMPUTER DATA BASE UPDATE ONLY.					
2	INCORPORATED ECN NO. RHS-008 ON REV. 4					
3	INCORPORATES ECN NOS. RHS-608, 089					
4	AS-TESTED ISSUE INCORPORATES ECN NOS. RHS-078, 079, 080, 082, 083, 084, 085, 087, 091 TO 093, 095 TO 096, 098, 099, 100, 101, 102, 103, 104, 105, 106, 107, 108, 109, 110, 111, 112, 113, 114, 115, 116, 117, 118, 119, 120, 121, 122, 123, 124, 125, 126, 127, 128, 129, 130, 131, 132, 133, 134, 135, 136, 137, 138, 139, 140, 141, 142, 143, 144, 145, 146, 147, 148, 149, 150, 151, 152, 153, 154, 155, 156, 157, 158, 159, 160, 161, 162, 163, 164, 165, 166, 167, 168, 169, 170, 171, 172, 173, 174, 175, 176, 177, 178, 179, 180, 181, 182, 183, 184, 185, 186, 187, 188, 189, 190, 191, 192, 193, 194, 195, 196, 197, 198, 199, 200, 201, 202, 203, 204, 205, 206, 207, 208, 209, 210, 211, 212, 213, 214, 215, 216, 217, 218, 219, 220, 221, 222, 223, 224, 225, 226, 227, 228, 229, 230, 231, 232, 233, 234, 235, 236, 237, 238, 239, 240, 241, 242, 243, 244, 245, 246, 247, 248, 249, 250, 251, 252, 253, 254, 255, 256, 257, 258, 259, 260, 261, 262, 263, 264, 265, 266, 267, 268, 269, 270, 271, 272, 273, 274, 275, 276, 277, 278, 279, 280, 281, 282, 283, 284, 285, 286, 287, 288, 289, 290, 291, 292, 293, 294, 295, 296, 297, 298, 299, 300, 301, 302, 303, 304, 305, 306, 307, 308, 309, 310, 311, 312, 313, 314, 315, 316, 317, 318, 319, 320, 321, 322, 323, 324, 325, 326, 327, 328, 329, 330, 331, 332, 333, 334, 335, 336, 337, 338, 339, 340, 341, 342, 343, 344, 345, 346, 347, 348, 349, 350, 351, 352, 353, 354, 355, 356, 357, 358, 359, 360, 361, 362, 363, 364, 365, 366, 367, 368, 369, 370, 371, 372, 373, 374, 375, 376, 377, 378, 379, 380, 381, 382, 383, 384, 385, 386, 387, 388, 389, 390, 391, 392, 393, 394, 395, 396, 397, 398, 399, 400, 401, 402, 403, 404, 405, 406, 407, 408, 409, 410, 411, 412, 413, 414, 415, 416, 417, 418, 419, 420, 421, 422, 423, 424, 425, 426, 427, 428, 429, 430, 431, 432, 433, 434, 435, 436, 437, 438, 439, 440, 441, 442, 443, 444, 445, 446, 447, 448, 449, 450, 451, 452, 453, 454, 455, 456, 457, 458, 459, 460, 461, 462, 463, 464, 465, 466, 467, 468, 469, 470, 471, 472, 473, 474, 475, 476, 477, 478, 479, 480, 481, 482, 483, 484, 485, 486, 487, 488, 489, 490, 491, 492, 493, 494, 495, 496, 497, 498, 499, 500, 501, 502, 503, 504, 505, 506, 507, 508, 509, 510, 511, 512, 513, 514, 515, 516, 517, 518, 519, 520, 521, 522, 523, 524, 525, 526, 527, 528, 529, 530, 531, 532, 533, 534, 535, 536, 537, 538, 539, 540, 541, 542, 543, 544, 545, 546, 547, 548, 549, 550, 551, 552, 553, 554, 555, 556, 557, 558, 559, 560, 561, 562, 563, 564, 565, 566, 567, 568, 569, 570, 571, 572, 573, 574, 575, 576, 577, 578, 579, 580, 581, 582, 583, 584, 585, 586, 587, 588, 589, 590, 591, 592, 593, 594, 595, 596, 597, 598, 599, 600, 601, 602, 603, 604, 605, 606, 607, 608, 609, 610, 611, 612, 613, 614, 615, 616, 617, 618, 619, 620, 621, 622, 623, 624, 625, 626, 627, 628, 629, 630, 631, 632, 633, 634, 635, 636, 637, 638, 639, 640, 641, 642, 643, 644, 645, 646, 647, 648, 649, 650, 651, 652, 653, 654, 655, 656, 657, 658, 659, 660, 661, 662, 663, 664, 665, 666, 667, 668, 669, 670, 671, 672, 673, 674, 675, 676, 677, 678, 679, 680, 681, 682, 683, 684, 685, 686, 687, 688, 689, 690, 691, 692, 693, 694, 695, 696, 697, 698, 699, 700, 701, 702, 703, 704, 705, 706, 707, 708, 709, 710, 711, 712, 713, 714, 715, 716, 717, 718, 719, 720, 721, 722, 723, 724, 725, 726, 727, 728, 729, 730, 731, 732, 733, 734, 735, 736, 737, 738, 739, 740, 741, 742, 743, 744, 745, 746, 747, 748, 749, 750, 751, 752, 753, 754, 755, 756, 757, 758, 759, 760, 761, 762, 763, 764, 765, 766, 767, 768, 769, 770, 771, 772, 773, 774, 775, 776, 777, 778, 779, 780, 781, 782, 783, 784, 785, 786, 787, 788, 789, 790, 791, 792, 793, 794, 795, 796, 797, 798, 799, 800, 801, 802, 803, 804, 805, 806, 807, 808, 809, 810, 811, 812, 813, 814, 815, 816, 817, 818, 819, 820, 821, 822, 823, 824, 825, 826, 827, 828, 829, 830, 831, 832, 833, 834, 835, 836, 837, 838, 839, 840, 841, 842, 843, 844, 845, 846, 847, 848, 849, 850, 851, 852, 853, 854, 855, 856, 857, 858, 859, 860, 861, 862, 863, 864, 865, 866, 867, 868, 869, 870, 871, 872, 873, 874, 875, 876, 877, 878, 879, 880, 881, 882, 883, 884, 885, 886, 887, 888, 889, 890, 891, 892, 893, 894, 895, 896, 897, 898, 899, 900, 901, 902, 903, 904, 905, 906, 907, 908, 909, 910, 911, 912, 913, 914, 915, 916, 917, 918, 919, 920, 921, 922, 923, 924, 925, 926, 927, 928, 929, 930, 931, 932, 933, 934, 935, 936, 937, 938, 939, 940, 941, 942, 943, 944, 945, 946, 947, 948, 949, 950, 951, 952, 953, 954, 955, 956, 957, 958, 959, 960, 961, 962, 963, 964, 965, 966, 967, 968, 969, 970, 971, 972, 973, 974, 975, 976, 977, 978, 979, 980, 981, 982, 983, 984, 985, 986, 987, 988, 989, 990, 991, 992, 993, 994, 995, 996, 997, 998, 999, 1000					

9305040152