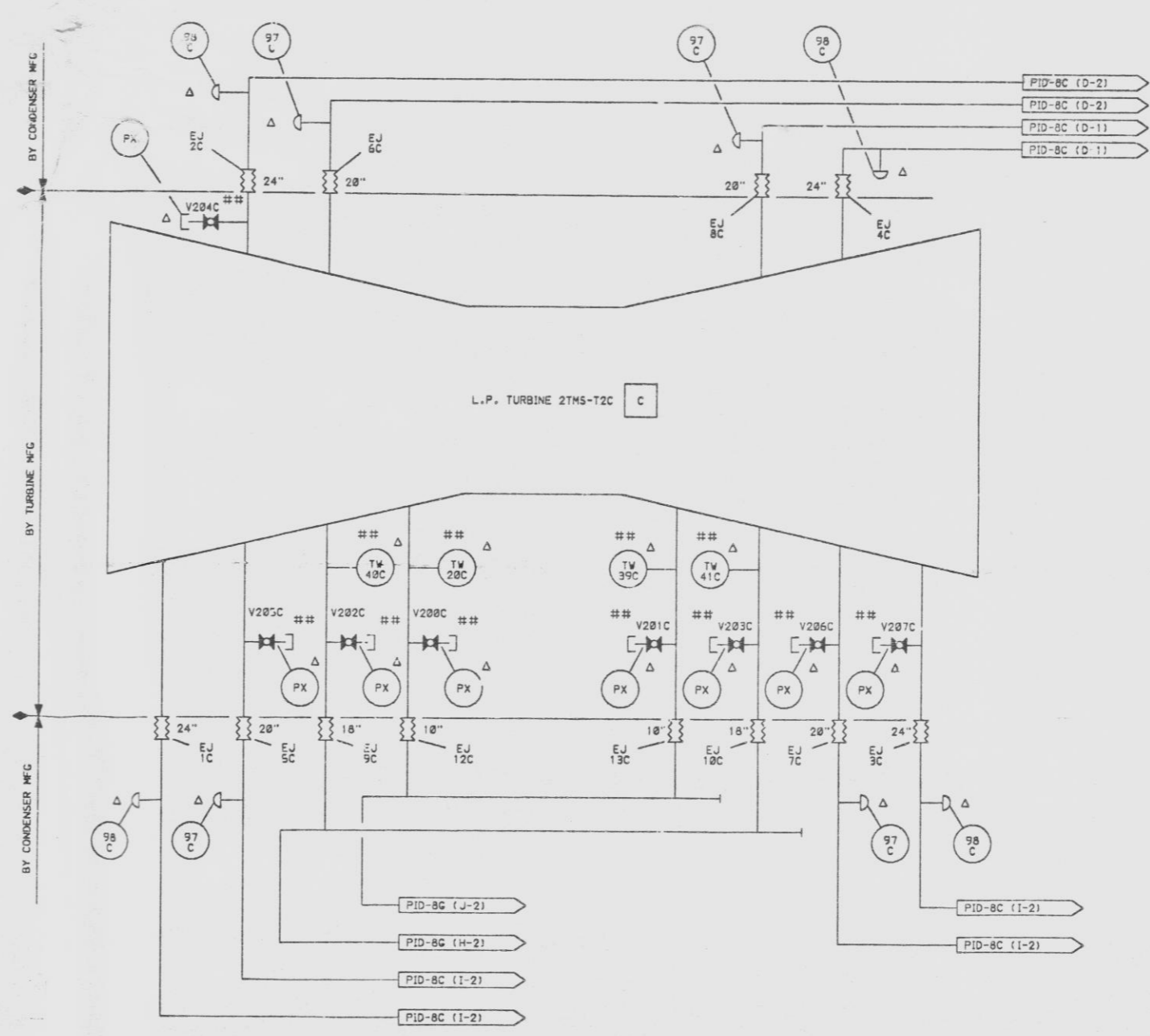
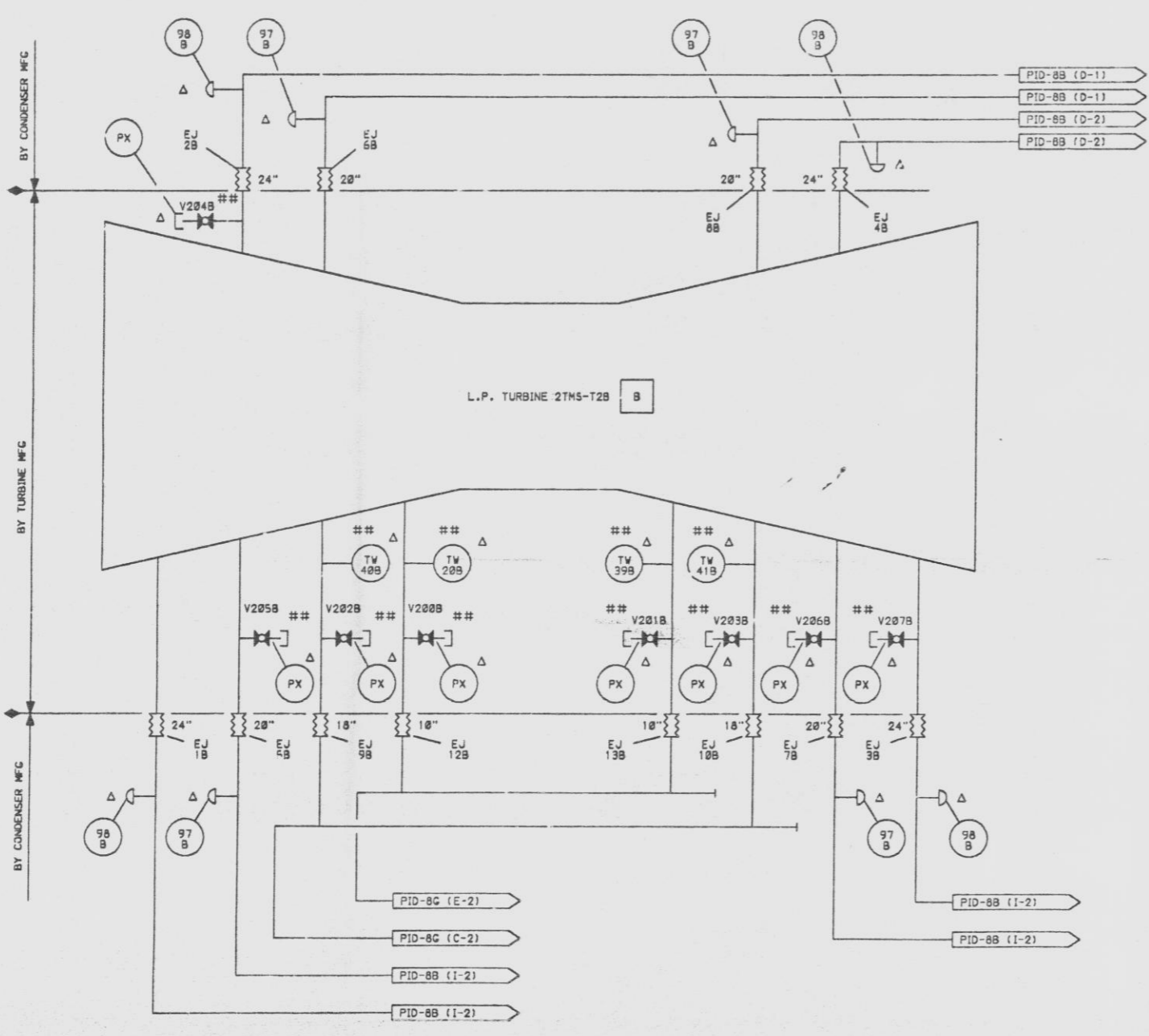
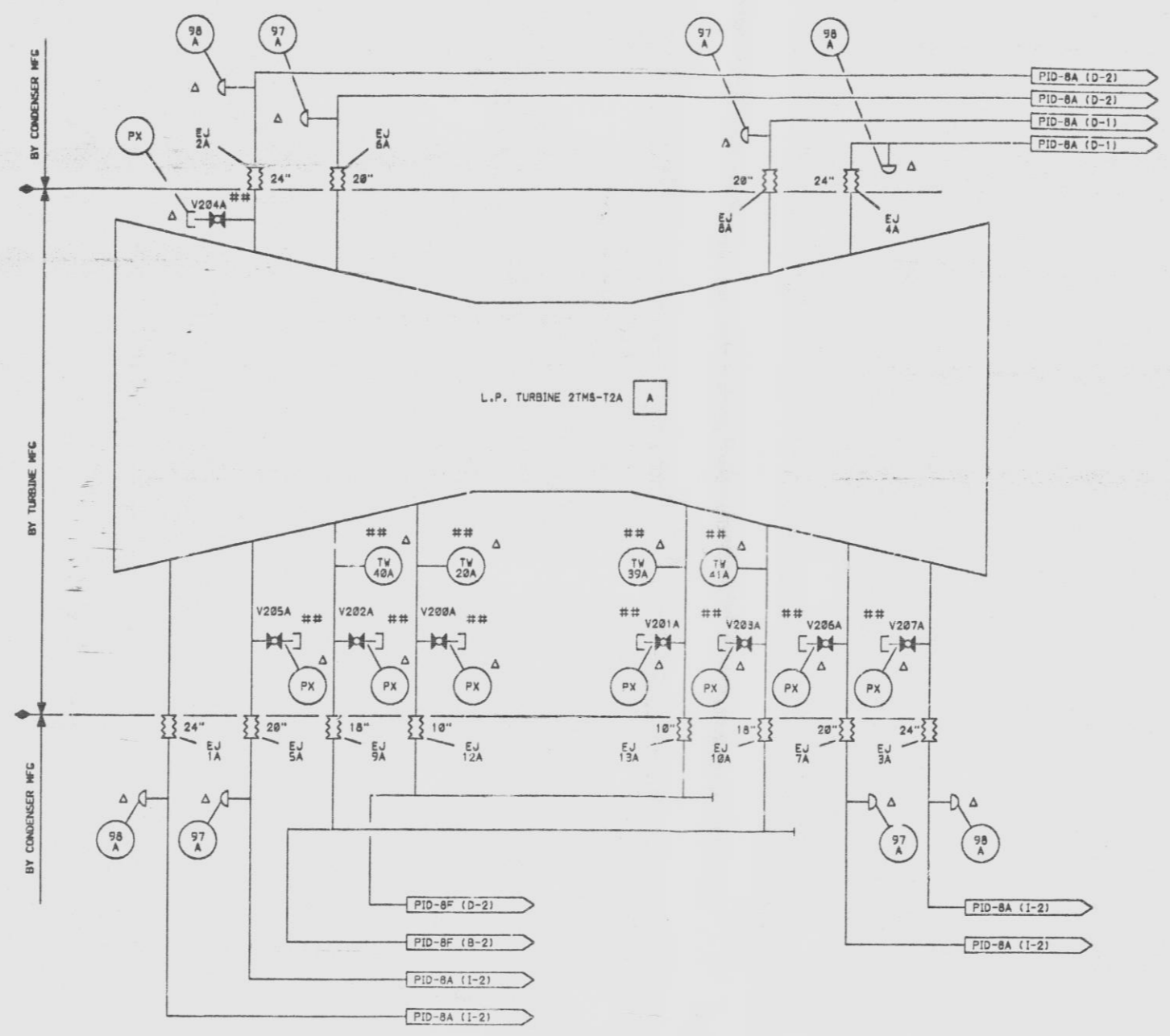


8-M8-D17-PID-8W-8

EXTRACTION STEAM SYSTEM VALVE TABLE

MARK NUMBER	VALVE DESCRIPTION	SIZE	NO. OF VALVES
V285A, B, C	SUPPLIED BY TURBINE MANUFACTURER	1/2"	24
V281A, B, C			
V282A, B, C			
V283A, B, C			
V284A, B, C			
V286A, B, C			
V287A, B, C			



- NOTES:
1. ALL INSTRUMENT & EQUIPMENT NUMBERS TO BE PREFIXED WITH "285-" EXCEPT WHERE A DIFFERENT PREFIX IS SHOWN.
  2. MANUFACTURER'S NUMBERS SHOWN IN SQUARES.
  3. Δ CONNECTIONS ONLY PROVIDED FOR ASME TEST. INSTRUMENTS WILL NOT BE PROVIDED.
  4. ALL "285-" PIPING SHALL BE CLASS 153 UNLESS OTHERWISE SHOWN.
  5. ALL VENTS AND DRAINS ARE 3/4" UNLESS OTHERWISE SHOWN.
  6. ASME PRESSURE CONNECTIONS ARE 1/2". ALL OTHER PRESSURE CONNECTIONS ARE 3/4".
  7. CONDENSER CONNECTIONS WILL BE PROVIDED FOR ALL ASME INJECTION & SAMPLE CONNECTIONS. SEE SAJ FILE NO. 4-819-893-894.
  8. AFTER AN ASME PERFORMANCE TEST OR IF A TEST IS NOT TO BE RUN, ALL Δ SUPPLIED VALVES FOR ASME PX CONNECTIONS MUST BE REMOVED & THE CONNECTION CAPPED.
  9. INJECTION CONNECTIONS: 37A, B, C OR B,C NUMBERS IN CIRCLES ARE CONDENSER/TURBINE SKIRT CONNECTION NUMBERS. TAPS ARE PIPED BY OTHERS.
  10. ## INDICATES EQUIPMENT PROVIDED BY GE-LSTG.
  11. ◊ DENOTES DISSIMILAR METAL WELD.

SI APERTURE CARD

07-141-91

QA CAT II

PIPING & INSTRUMENTATION DIAGRAM  
FEEDWATER HEATERS & EXTRACTION STEAM SYSTEMS  
NINE MILE POINT NUCLEAR STATION-UNIT 2  
NIAGARA MOHAWK POWER CORPORATION  
STONE & WEBSTER ENGINEERING CORPORATION  
CHERRY HILL, N.J.

DRAWING NUMBER 12177-PID-8W-8

NO.	ISSUED FOR COMPUTER DATA BASE UPDATE ONLY	RUB RAS NMPC	CHKD	CORRECT	DATE	DESCRIPTION	INCORPORATES ECN NO. 555-013	BAL AEH NMPC	CHKD	CORRECT	DATE	DESCRIPTION	INCORPORATES ECN NO. 555-004	APPROVED	DATE	DESCRIPTION	INCORPORATES EDC NO. 2118021	M BAL NMPC	CHKD	CORRECT	DATE	DESCRIPTION	INCORPORATES EDC NO. 2100072	JEM	DATE	DESCRIPTION	
6					9-11-88																						

9305040/22

THIS DRAWING CREATED ELECTRONICALLY

DATE PLOTTED: 8/15/88

SCALE: AS SHOWN