

EXTRACTION STEAM SYSTEM VALVE TABLE

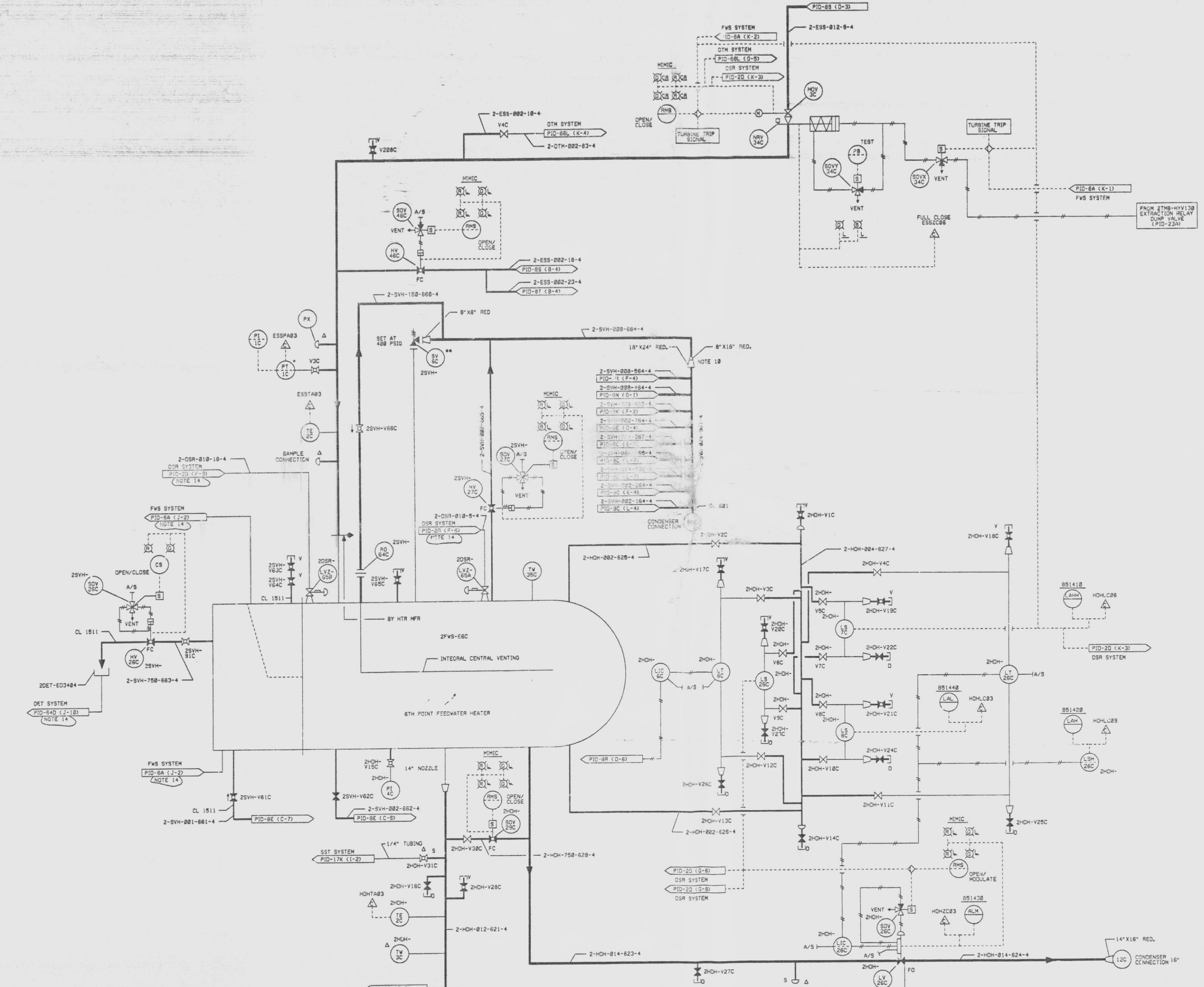
MARK NUMBER	VALVE DESCRIPTION	SIZE	NO. OF VALVES
YH48C	YH4838-M-4Q	2"	1
NOY3C	YH4838-Y-4PVD	12"	1
NY34C	YH4838-X-4PVD	12"	1
Y25, 288C	YH4868-D-4	3/4"	2
Y4C	YH4868-E-4	2"	1

L.P. FEEDWATER HEATER DRAINS SYSTEM VALVE TABLE "253H"

MARK NUMBER	VALVE DESCRIPTION	SIZE	NO. OF VALVES
SOV29C	YH5158-FD-4Q	3/4"	1
V11C, 18C, 17C, V13C, 17C, 25B, V12C, 28C, 31C	YH5088-D-4	3/4"	8
V2C, 3, 4C, V11C, 12C, 13C	YH5088-C-4	2"	8
V5C, 6C, 7C, V2C, 24C, 25C, V2C, 24C, 25C, V2C, 24C, 25C	YH5088-C-4	1"	8
V14C, 16C, 22C, V23C, 24C, 25C, V23C, 24C, 25C, V23C, 24C, 25C	YH5088-C-4	3/4"	8

FEEDWATER HEATER RELIEF VENTS & DRAINS SYSTEM VALVE TABLE "253H"

MARK NUMBER	VALVE DESCRIPTION	SIZE	NO. OF VALVES
SOV158C	YH5158-C-4Q	3/4"	1
HV27C	YH5038-C-4Q	2"	1
V81C	YH5158-F-4	1"	1
V82C	YH5088-C-4	2"	1
V83C, 64C, 91C	YH5158-F-4	3/4"	3
V85C	YH5088-D-4	3/4"	1
V86C	YH5088-D-4	1-1/2"	1



- NOTES:
1. ALL INSTRUMENT & EQUIPMENT NUMBERS TO BE PROVIDED WITH "253H" EXCEPT WHERE A DIFFERENT PREFIX IS SHOWN.
 2. A CONNECTIONS ONLY PROVIDED FOR ASME TEST. INSTRUMENTS WILL NOT BE PROVIDED.
 3. ALL "253H" PIPING SHALL BE CLASS 2B3M UNLESS OTHERWISE SHOWN.
 4. * INDICATES LOCATED IN RADIATION ZONE 4, 5, OR 6.
 5. ALL "253H" PIPING SHALL BE CLASS 301 UNLESS OTHERWISE SHOWN.
 6. ALL VENTS AND DRAINS ARE 3/4" UNLESS OTHERWISE SHOWN.
 7. SAMPLE CONNECTIONS PER 5M SKETCH 12177-A-77.
 8. ALL "253H" PIPING SHALL BE CLASS 301 UNLESS OTHERWISE SHOWN.
 9. ALL "253H" HV'S ARE FAIL CLOSED.
 10. ALL "253H" REDUCERS ARE CL 301.
 11. ASME PRESSURE CONNECTIONS ARE 1/2". ALL OTHER PRESSURE CONNECTIONS ARE 3/4".
 12. ASME SAMPLE TAP ALSO TO BE USED FOR SST SYSTEM.
 13. ** SUPPLIED BY HEATER MANUFACTURER.
 14. NO P&ID SHOWN ON CORRESPONDING DOCUMENT. COORDINATES PROVIDE INSURANCE LOCATION.
 15. * DENOTES DISSIMILAR METAL WELD.

SI APERTURE CARD

07-141-91

QA CAT II

PIPING & INSTRUMENTATION DIAGRAM
FEEDWATER HEATERS &
EXTRACTION STEAM SYSTEMS
NINE MILE POINT NUCLEAR STATION-UNIT 2
NIAGARA MOHAWK POWER CORPORATION
STONE & WEBSTER ENGINEERING CORPORATION
CHERRY HILL, N.J.

DRAWING NUMBER 12177-PID-8U-5

REV	DESCRIPTION	DATE	BY	CHKD	APP'D	REV	DESCRIPTION	DATE	BY	CHKD	APP'D
1	INCORPORATES EDC NO. 2400032					1	INCORPORATES EDC NO. 2400032				
2	CORRECTED REV. BLOCK 3, INCORPORATES EDC NO. 2400032, ISSUED FOR COMPUTER DATA BASE UPDATE					2	CORRECTED REV. BLOCK 3, INCORPORATES EDC NO. 2400032, ISSUED FOR COMPUTER DATA BASE UPDATE				

9305040120