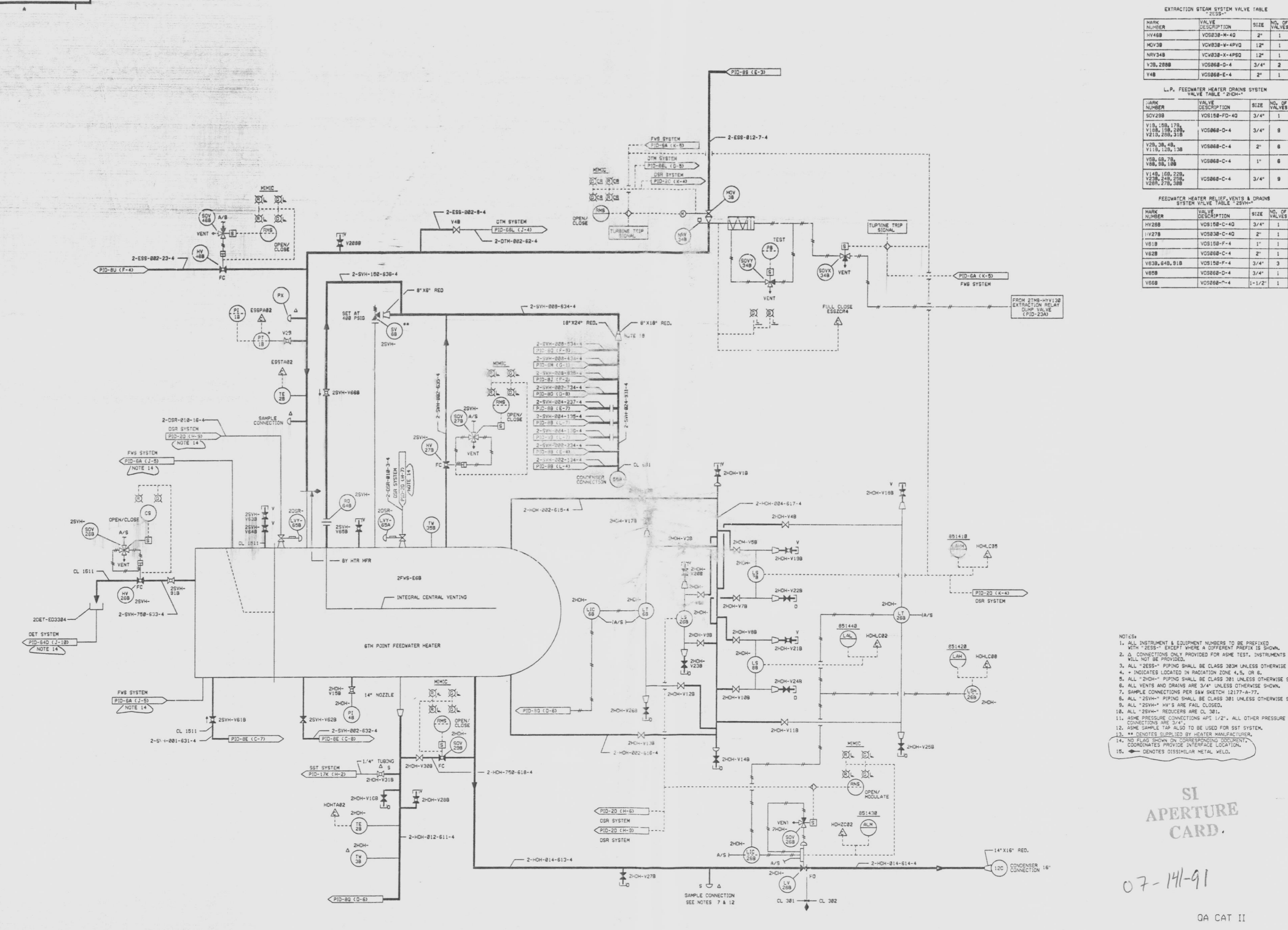


12177-PID-8T-5



EXTRACTION STEAM SYSTEM VALVE TABLE  
2ESS-1

NAME NUMBER	VALVE DESCRIPTION	SIZE	NO. OF VALVES
HY48B	V0838-M-4Q	2"	1
MOV38	V0838-X-4PQ	12"	1
NRV34B	V0838-X-4PQ	12"	1
V38, 288B	V0868-D-4	3/4"	2
Y48	V0868-E-4	2"	1

L.P. FEEDWATER HEATER DRAINS SYSTEM VALVE TABLE  
2DCH-1

NAME NUMBER	VALVE DESCRIPTION	SIZE	NO. OF VALVES
SOV28B	V0188-FD-4Q	3/4"	1
V18, 188, 178, V188, 178, 288, V218, 288, 318	V0868-D-4	3/4"	9
V28, 38, 48, V118, 128, 138	V0868-C-4	2"	8
V58, 68, 78, V88, 98, 108	V0868-C-4	1"	8
V148, 168, 228, V238, 248, 258, V268, 278, 288	V0868-C-4	3/4"	9

FEEDWATER RELIEF, VENTS & DRAINS SYSTEM VALVE TABLE  
2SVH-1

NAME NUMBER	VALVE DESCRIPTION	SIZE	NO. OF VALVES
HY28B	V0188-C-4Q	3/4"	1
V127B	V0838-C-4Q	2"	1
V81B	V0188-F-4	1"	1
V82B	V0868-C-4	2"	1
V83B, 84B, 81B	V0188-F-4	3/4"	3
V88B	V0868-D-4	3/4"	1
V88B	V0868-F-4	1-1/2"	1

- NOTES:
1. ALL INSTRUMENT & EQUIPMENT NUMBERS TO BE PREFIXED WITH "2ESS-" EXCEPT WHERE A DIFFERENT PREFIX IS SHOWN.
  2. CONNECTIONS ONLY PROVIDED FOR ASSE TEST. INSTRUMENTS WILL NOT BE PROVIDED.
  3. ALL "2ESS-" PIPING SHALL BE CLASS 3038 UNLESS OTHERWISE SHOWN.
  4. "INDICATES LOCATED IN INDICATION ZONE 4, 5, OR 6."
  5. ALL "2DCH-" PIPING SHALL BE CLASS 381 UNLESS OTHERWISE SHOWN.
  6. ALL VENTS AND DRAINS ARE 3/4" UNLESS OTHERWISE SHOWN.
  7. SAMPLE CONNECTIONS PER 84M SKETCH 12177-A-77.
  8. ALL "2SVH-" PIPING SHALL BE CLASS 381 UNLESS OTHERWISE SHOWN.
  9. ALL "2SVH-" HV'S ARE FAIL CLOSED.
  10. ALL "2SVH-" REDUCERS ARE CL 381.
  11. ASSE PRESSURE CONNECTIONS HPT 1/2". ALL OTHER PRESSURE CONNECTIONS ARE 3/4".
  12. ASSE SAMPLE TAGS ALSO TO BE USED FOR SST SYSTEM.
  13. \*\* DENOTES SUPPLIED BY HEATER MANUFACTURER.
  14. NO FLAG SHOWN ON CORRESPONDING DOCUMENT. COORDINATES PROVIDE INTERFACE LOCATION.
  15. DENOTES DISSIMILAR METAL WELD.

SI APERTURE CARD.

07-141-91

QA CAT II

PIPING & INSTRUMENTATION DIAGRAM  
FEEDWATER HEATERS &  
EXTRACTION STEAM SYSTEMS  
NINE MILE POINT NUCLEAR STATION-UNIT 2  
NIAGARA MOHAWK POWER CORPORATION  
STONE & WEBSTER ENGINEERING CORPORATION  
CHERRY HILL, N.J.

DRAWING NUMBER 12177-PID-8T-5

DESIGNED BY: D. DEL MOORE  
DRAWN BY: D. DEL MOORE  
CHECKED BY: E. F. CURRAN  
DATE: 10/1/84

ISSUE	DESCRIPTION	CHKD	CORRECT	DATE	ISSUE	DESCRIPTION	CHKD	CORRECT	DATE	ISSUE	DESCRIPTION	CHKD	CORRECT	DATE
1	ISSUED FOR COMPUTER DATA BASE UPDATE ONLY													
2	AS-TESTED ISSUE, INCORPORATES EEN NO. 15, 158, 161, 161, 162, 163, 164, 165, 166, 167, 168, 169, 170, 171, 172, 173, 174, 175, 176, 177, 178, 179, 180, 181, 182, 183, 184, 185, 186, 187, 188, 189, 190, 191, 192, 193, 194, 195, 196, 197, 198, 199, 200, 201, 202, 203, 204, 205, 206, 207, 208, 209, 210, 211, 212, 213, 214, 215, 216, 217, 218, 219, 220, 221, 222, 223, 224, 225, 226, 227, 228, 229, 230, 231, 232, 233, 234, 235, 236, 237, 238, 239, 240, 241, 242, 243, 244, 245, 246, 247, 248, 249, 250, 251, 252, 253, 254, 255, 256, 257, 258, 259, 260, 261, 262, 263, 264, 265, 266, 267, 268, 269, 270, 271, 272, 273, 274, 275, 276, 277, 278, 279, 280, 281, 282, 283, 284, 285, 286, 287, 288, 289, 290, 291, 292, 293, 294, 295, 296, 297, 298, 299, 300, 301, 302, 303, 304, 305, 306, 307, 308, 309, 310, 311, 312, 313, 314, 315, 316, 317, 318, 319, 320, 321, 322, 323, 324, 325, 326, 327, 328, 329, 330, 331, 332, 333, 334, 335, 336, 337, 338, 339, 340, 341, 342, 343, 344, 345, 346, 347, 348, 349, 350, 351, 352, 353, 354, 355, 356, 357, 358, 359, 360, 361, 362, 363, 364, 365, 366, 367, 368, 369, 370, 371, 372, 373, 374, 375, 376, 377, 378, 379, 380, 381, 382, 383, 384, 385, 386, 387, 388, 389, 390, 391, 392, 393, 394, 395, 396, 397, 398, 399, 400, 401, 402, 403, 404, 405, 406, 407, 408, 409, 410, 411, 412, 413, 414, 415, 416, 417, 418, 419, 420, 421, 422, 423, 424, 425, 426, 427, 428, 429, 430, 431, 432, 433, 434, 435, 436, 437, 438, 439, 440, 441, 442, 443, 444, 445, 446, 447, 448, 449, 450, 451, 452, 453, 454, 455, 456, 457, 458, 459, 460, 461, 462, 463, 464, 465, 466, 467, 468, 469, 470, 471, 472, 473, 474, 475, 476, 477, 478, 479, 480, 481, 482, 483, 484, 485, 486, 487, 488, 489, 490, 491, 492, 493, 494, 495, 496, 497, 498, 499, 500, 501, 502, 503, 504, 505, 506, 507, 508, 509, 510, 511, 512, 513, 514, 515, 516, 517, 518, 519, 520, 521, 522, 523, 524, 525, 526, 527, 528, 529, 530, 531, 532, 533, 534, 535, 536, 537, 538, 539, 540, 541, 542, 543, 544, 545, 546, 547, 548, 549, 550, 551, 552, 553, 554, 555, 556, 557, 558, 559, 560, 561, 562, 563, 564, 565, 566, 567, 568, 569, 570, 571, 572, 573, 574, 575, 576, 577, 578, 579, 580, 581, 582, 583, 584, 585, 586, 587, 588, 589, 590, 591, 592, 593, 594, 595, 596, 597, 598, 599, 600, 601, 602, 603, 604, 605, 606, 607, 608, 609, 610, 611, 612, 613, 614, 615, 616, 617, 618, 619, 620, 621, 622, 623, 624, 625, 626, 627, 628, 629, 630, 631, 632, 633, 634, 635, 636, 637, 638, 639, 640, 641, 642, 643, 644, 645, 646, 647, 648, 649, 650, 651, 652, 653, 654, 655, 656, 657, 658, 659, 660, 661, 662, 663, 664, 665, 666, 667, 668, 669, 670, 671, 672, 673, 674, 675, 676, 677, 678, 679, 680, 681, 682, 683, 684, 685, 686, 687, 688, 689, 690, 691, 692, 693, 694, 695, 696, 697, 698, 699, 700, 701, 702, 703, 704, 705, 706, 707, 708, 709, 710, 711, 712, 713, 714, 715, 716, 717, 718, 719, 720, 721, 722, 723, 724, 725, 726, 727, 728, 729, 730, 731, 732, 733, 734, 735, 736, 737, 738, 739, 740, 741, 742, 743, 744, 745, 746, 747, 748, 749, 750, 751, 752, 753, 754, 755, 756, 757, 758, 759, 760, 761, 762, 763, 764, 765, 766, 767, 768, 769, 770, 771, 772, 773, 774, 775, 776, 777, 778, 779, 780, 781, 782, 783, 784, 785, 786, 787, 788, 789, 790, 791, 792, 793, 794, 795, 796, 797, 798, 799, 800, 801, 802, 803, 804, 805, 806, 807, 808, 809, 810, 811, 812, 813, 814, 815, 816, 817, 818, 819, 820, 821, 822, 823, 824, 825, 826, 827, 828, 829, 830, 831, 832, 833, 834, 835, 836, 837, 838, 839, 840, 841, 842, 843, 844, 845, 846, 847, 848, 849, 850, 851, 852, 853, 854, 855, 856, 857, 858, 859, 860, 861, 862, 863, 864, 865, 866, 867, 868, 869, 870, 871, 872, 873, 874, 875, 876, 877, 878, 879, 880, 881, 882, 883, 884, 885, 886, 887, 888, 889, 890, 891, 892, 893, 894, 895, 896, 897, 898, 899, 900, 901, 902, 903, 904, 905, 906, 907, 908, 909, 910, 911, 912, 913, 914, 915, 916, 917, 918, 919, 920, 921, 922, 923, 924, 925, 926, 927, 928, 929, 930, 931, 932, 933, 934, 935, 936, 937, 938, 939, 940, 941, 942, 943, 944, 945, 946, 947, 948, 949, 950, 951, 952, 953, 954, 955, 956, 957, 958, 959, 960, 961, 962, 963, 964, 965, 966, 967, 968, 969, 970, 971, 972, 973, 974, 975, 976, 977, 978, 979, 980, 981, 982, 983, 984, 985, 986, 987, 988, 989, 990, 991, 992, 993, 994, 995, 996, 997, 998, 999, 1000													

9305040119