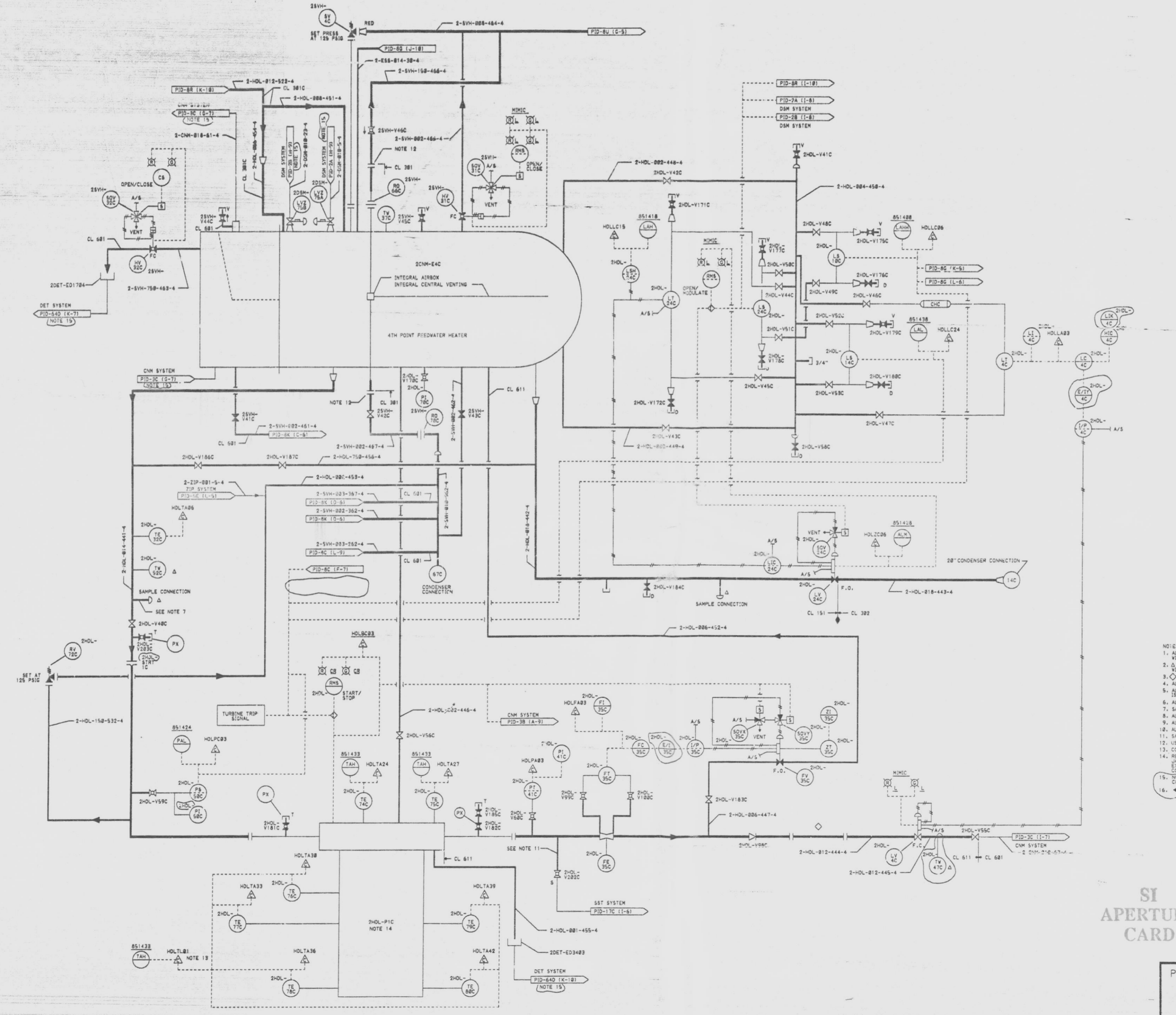


L.P. FEEDWATER HEATER DRAINS SYSTEM VALVE TABLE "2HOL"

MARK NUMBER	VALVE DESCRIPTION	SIZE	NO. OF VALVES
V48C	VCV815-G-4K	14"	1
V41C, 59C, 68C, V99C, 108C, 175C, V177C, 179C, 181C, V182C, V199C, V293C	VOS808-D-4	3/4"	14
V42C, 43C, 44C, V45C	VOS808-C-4	2"	4
V46C, 47C, 58C, V175C, 188C, 184C, V186C, V187	VOS808-C-4	3/4"	18
V48C, 49C, 59C, V51C, 52C, 53C	VOS808-C-4	1"	6
V55C	VOS808-B-47	12"	1
V58C	VOS808-C-4	2"	1
V98C	VOS808-E-4M	12"	1
V183C	VOS808-B-4M	6"	1
V282C	VOS808-E-4	3/4"	1

FEEDWATER HEATER RELIEF, VENTS & DRAINS SYSTEM VALVE TABLE "25VH"

MARK NUMBER	VALVE DESCRIPTION	SIZE	NO. OF VALVES
HV31C	VOS815-C-4Q	2"	1
HV32C	VOS808-C-4Q	3/4"	1
V41C, 42C, 43C	VOS808-C-4	2"	3
V44C, 45C	VOS808-D-4	3/4"	2
V46C	VOS808-D-4	1-1/2"	1



- NOTES:
1. ALL INSTRUMENT & EQUIPMENT NUMBERS TO BE PREFIXED WITH "255" EXCEPT WHERE A DIFFERENT PREFIX IS SHOWN.
 2. Δ CONNECTIONS ONLY PROVIDED FOR ASME TEST. INSTRUMENTS WILL NOT BE PROVIDED.
 3. ∇ SPOOL PIECE FOR ASME TEST FLOW NOZZLE REQUIRED.
 4. ALL "2HOL" PIPING SHALL BE CLASS 151 UNLESS OTHERWISE SHOWN.
 5. ALL PIPING TO LEVEL SWITCHES IS "1", TO LEVEL TRANSMITTERS IS "2".
 6. ALL VENTS AND DRAINS ARE 3/4" UNLESS OTHERWISE SHOWN.
 7. SAMPLE CONNECTIONS PER S/W SKETCH 12177-A-77.
 8. ALL "25VH" PIPING SHALL BE CLASS 301 UNLESS OTHERWISE SHOWN.
 9. ALL HV'S ARE FAIL CLOSED.
 10. ALL PRESSURE AND FLOW CONNECTIONS ARE 3/4".
 11. SAMPLE PROBE PER S/W DOCUMENT NO. 224078B.
 12. USE A312 TP 384 X5 NIPPLE AND A182 F304 3024 S.V. RF FLANGE.
 13. COMPUTER GENERATED ALARM.
 14. REFER TO JOB 14-F (H-141) FOR (HOL) HEATER DRAIN PUMP JACKET COOLER, HEATER DRAIN PUMP COOLING WATER HEAT EXCHANGER, HEATER DRAIN PUMP MOTOR OIL SEATING COOLER, COOLING WATER PIPING ARRANGEMENT (CCS).
 15. NO FLAG SHOWN ON CORRESPONDING DOCUMENT. COORDINATES PROVIDE INTERFACE LOCATION.
 16. ● DENOTES DIS. TILAR METAL WELD.

SI APERTURE CARD 07-141-91
QA CAT II

PIPING & INSTRUMENTATION DIAGRAM
FEEDWATER HEATERS &
EXTRACTION STEAM SYSTEMS
NINE MILE POINT NUCLEAR STATION UNIT 2
NIAGARA MOHAWK POWER CORPORATION
STONE & WEBSTER ENGINEERING CORPORATION
CHERRY HILL, N.J.

DRAWING NUMBER 12177-PID-8N-7

DESIGNED BY D. DEL MOORE DRAWN BY D. DEL MOORE
CHECKED BY E. F. CURRAN

REV	DESCRIPTION	DATE	BY	CHKD
1	ISSUED FOR COMPUTER DATA BASE UPDATE ONLY			
2	INCORPORATES E.C.N. NO. 248032			

9305040097