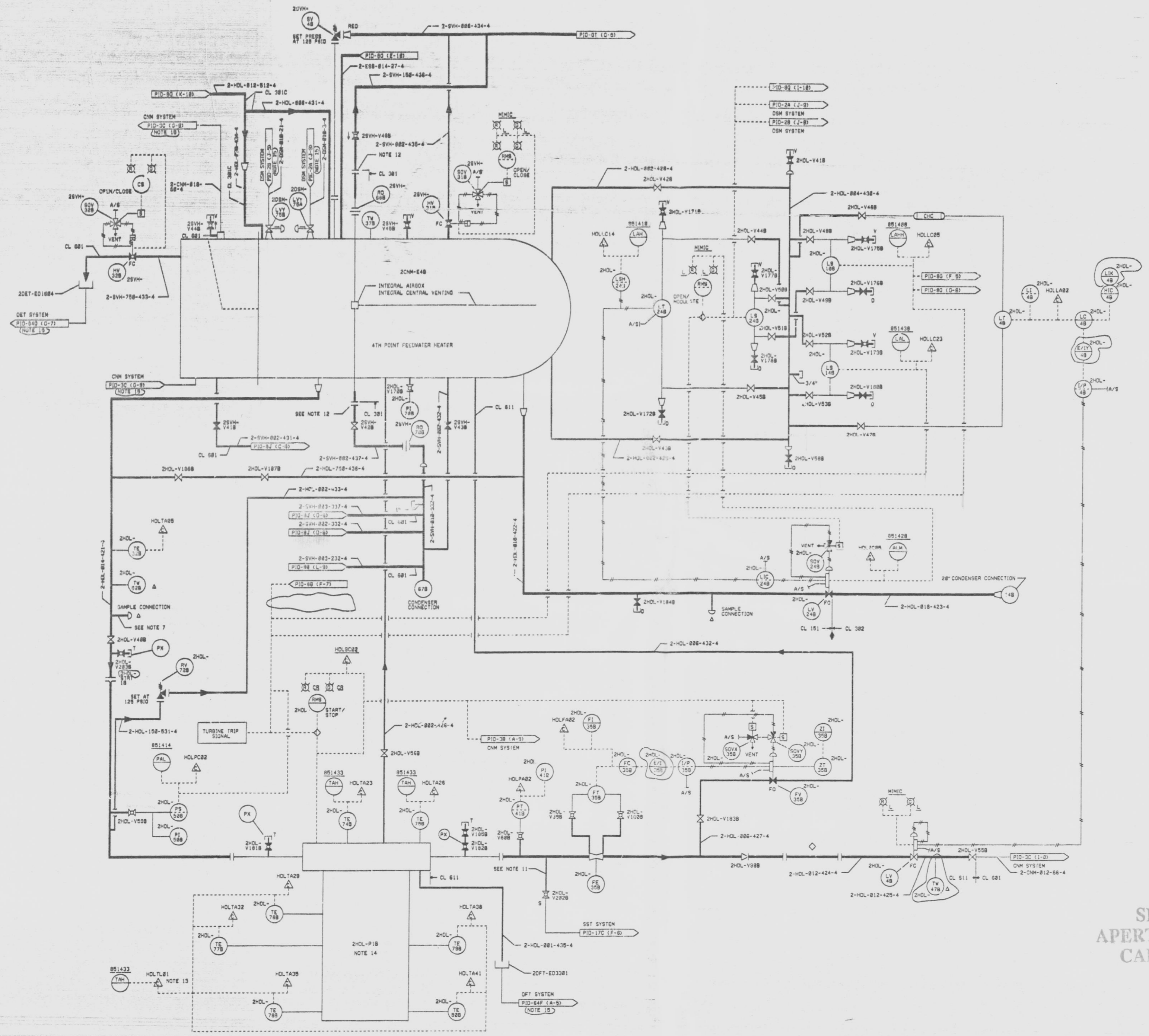


L.P. FEEDWATER HEATER DRAINS SYSTEM

MARK NUMBER	VALVE DESCRIPTION	SIZE	NO. OF VALVES
V488	YOV815-D-4K	1 1/2"	1
V418, 598, 608, 618, 628, 638, 648, 658, 668, 678, 688, 698, 708, 718, 728, 738, 748, 758, 768, 778, 788, 798, 808, 818, 828, 838, 848, 858, 868, 878, 888, 898, 908, 918, 928, 938, 948, 958, 968, 978, 988, 998	YOV888-D-4	3/4"	14
V428, 438, 448, 458	YOV888-C-6	2"	4
V468, 478, 508, 518, 528, 538, 548, 558, 568, 578, 588, 598, 608, 618, 628, 638, 648, 658, 668, 678, 688, 698, 708, 718, 728, 738, 748, 758, 768, 778, 788, 798, 808, 818, 828, 838, 848, 858, 868, 878, 888, 898, 908, 918, 928, 938, 948, 958, 968, 978, 988, 998	YOV888-C-6	3/4"	18
V488, 498, 508, 518, 528, 538	YOV888-C-4	1"	8
V588	YOV888-B-4Z	12"	1
V588	YOV888-C-4	2"	1
V598	YOV888-E-4M	12"	1
V183B	YOV888-B-4M	6"	1
V282B	YOV888-E-4	3/4"	1

MARK NUMBER	VALVE DESCRIPTION	SIZE	NO. OF VALVES
HV318	YOV815-C-4Q	2"	1
HV328	YOV888-C-4Q	3/4"	1
V448, 458, 468	YOV888-C-4	2"	3
V488, 498	YOV888-D-4	3/4"	2
V688	YOV888-D-4	1-1/2"	1



- NOTES:
1. ALL INSTRUMENT & EQUIPMENT NUMBERS TO BE PREFIXED WITH "28S" EXCEPT WHERE A DIFFERENT PREFIX IS SHOWN.
 2. CONNECTIONS ONLY PROVIDED FOR ASME TEST. INSTRUMENTS WILL NOT BE PROVIDED.
 3. SPOOL PIECE FOR ASME TEST FLOW NOZZLE REQUIRED.
 4. ALL "2HOL" PIPING SHALL BE CLASS 15; UNLESS OTHERWISE SHOWN.
 5. ALL PIPING TO LEVEL SWITCHES IS 1" TO LEVEL TRANSMITTERS IS 2".
 6. ALL VENTS AND DRAINS ARE 3/4" UNLESS OTHERWISE SHOWN.
 7. SAMPLE CONNECTIONS PER SAM SKETCH 12177-A-77.
 8. ALL "28S" PIPING SHALL BE CLASS 301 UNLESS OTHERWISE SHOWN.
 9. ALL HV'S ARE FAIL CLOSED.
 10. ALL PRESSURE AND FLOW CONNECTIONS ARE 3/4".
 11. SAMPLE PROBE PER GE NED DOCUMENT NO. 2242788.
 12. USE A312 TP 324 WS NIPPLE AND A182 F304 308" S.V. RF FLANGE.
 13. COMPUTER GENERATED ALARM.
 14. REFER TO PID 147 (E.F.-4) FOR (HOL) HEATER DRAIN PUMP JACKET COOLER, HEATER DRAIN PUMP COOLING WATER HEAT EXCHANGER, HEATER DRAIN PUMP MOTOR OIL BEARING COOLER, COOLING WATER PIPING ARRANGEMENT (CCS).
 15. NO FLAG SHOWN ON CORRESPONDING DOCUMENT. COORDINATES PROVIDED INTERFACE LOCATION.
 16. DENOTES DISSIMILAR METAL WELD.

SI
APERTURE
CARD

07-14-91

QA CAT II

PIPING & INSTRUMENTATION DIAGRAM
FEEDWATER HEATERS &
EXTRACTION STEAM SYSTEMS
NINE MILE POINT NUCLEAR STATION-UNIT 2
NIAGARA MOHAWK POWER CORPORATION
STONE & WEBSTER ENGINEERING CORPORATION
CHERRY HILL, N.J.

DRAWING NUMBER 12177-PID-8M-7
DESIGNED BY D. DEL MOORE
CHECKED BY E.F. CURRAN

ISSUE	DESCRIPTION	CHKD	CORRECT	DATE	ISSUE	DESCRIPTION	CHKD	CORRECT	DATE	ISSUE	DESCRIPTION	CHKD	CORRECT	DATE	ISSUE	DESCRIPTION	CHKD	CORRECT	DATE	
1	INCORPORATES ECN NO. HOL-888				2	ISSUED FOR COMPUTER DATA BASE UPDATE ONLY				3	AS TESTED 28S INCORPORATES ECN NO. 833-812-481-28S, 28S-VH-888-434-4, 812-812-27-4, 812-812-27-4, 812-812-27-4				4	INCORPORATES ECN NO. HOL-883				

9305040095

THIS DRAWING CREATED ELECTRONICALLY

DRAWN BY T. MOORE
CHECKED BY E.F. CURRAN