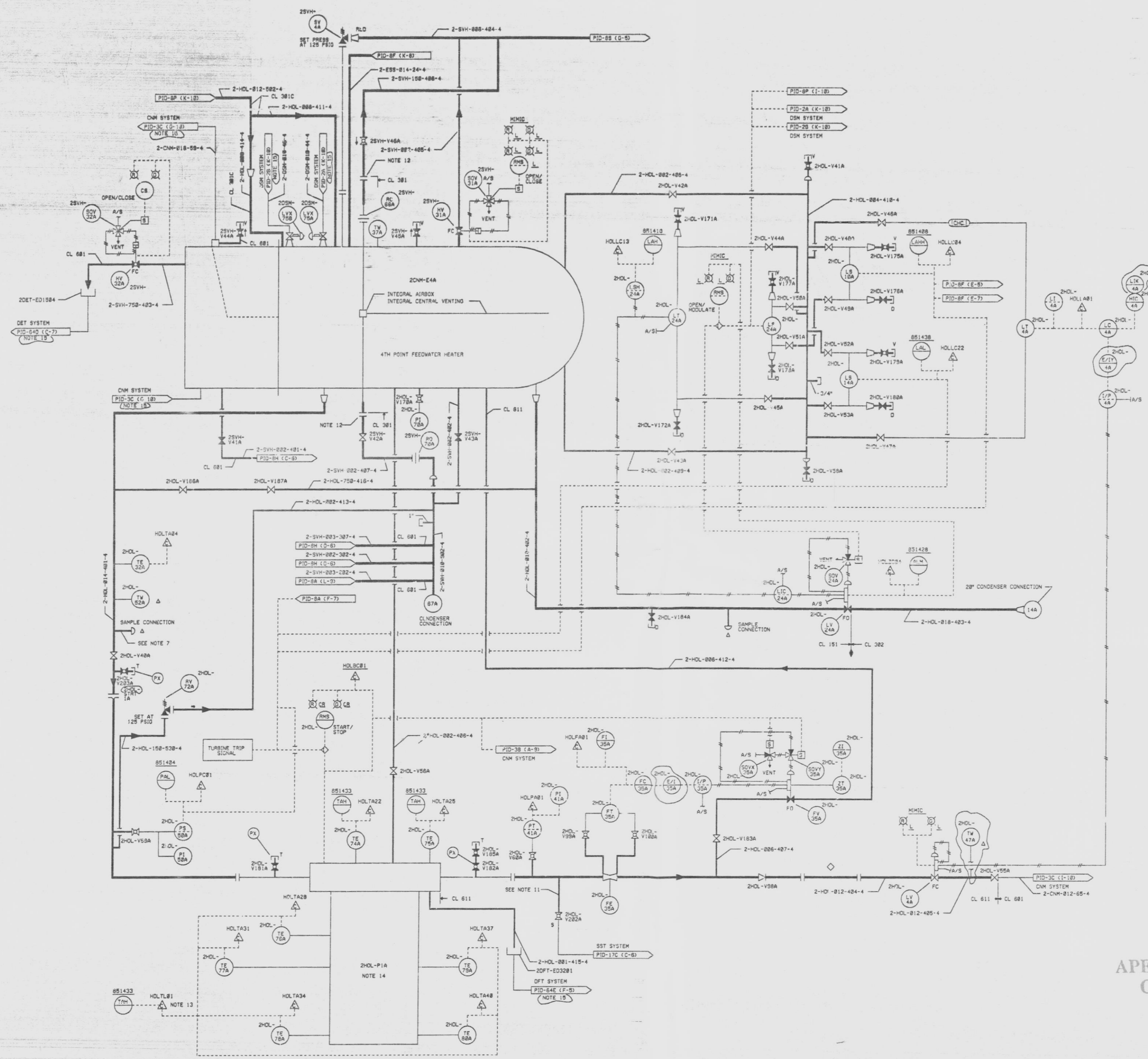


L.P. FEEDWATER HEATER DRAINS SYSTEM VALVE TABLE "2HOL"

MARK NUMBER	VALVE DESCRIPTION	SIZE	NO. OF VALVES
V41A, 53A, 68A, V59A, 180A, 179A, V177A, 178A, 181A, V182A, V185A, V283A	VOS888-D-4	3/4"	14
V42A, 43A, 44A, V45A	VOS888-C-4	2"	4
V48A, 47A, 58A, V172A, V176A, 188A, 184A, V188A, V187	VOS888-C-4	1/4"	18
V49A, 49A, 58A, V51A, 52A, 53A	VOS888-C-4	1"	8
V55A	VOS888-B-4Z	12"	1
V58A	VOS888-C-6	2"	1
V59A	VOS888-E-4M	12"	1
V183A	VOS888-B-4M	8"	1
V282A	VOS888-E-4	3/4"	1

FEEDWATER HEATER RELIEF VENTS & DRAINS SYSTEM VALVE TABLE "2SVH"

MARK NUMBER	VALVE DESCRIPTION	SIZE	NO. OF VALVES
HV31A	VOS888-C-4G	2"	1
HV32A	VOS888-C-4G	3/4"	1
V41A, 42A, 43A	VOS888-C-4	2"	3
V44A, 45A	VOS888-D-4	3/4"	2
V46A	VOS888-D-4	1-1/2"	1



- NOTES:
1. ALL INSTRUMENT & EQUIPMENT NUMBERS TO BE PREFIXED WITH "2SVH" EXCEPT WHERE A DIFFERENT PREFIX IS SHOWN.
 2. ALL CONNECTIONS ONLY PROVIDED FOR ASME TEST. INSTRUMENTS WILL NOT BE PROVIDED.
 3. SPOOL PIECE FOR ASME TEST FLOW NOZZLE REQUIRED.
 4. ALL "2HOL" PIPING SHALL BE CLASS 151 UNLESS OTHERWISE SHOWN.
 5. ALL PIPING TO LEVEL SWITCHES IS 1" TO LEVEL TRANSMITTERS IS 2".
 6. ALL VENTS AND DRAINS ARE 3/4" UNLESS OTHERWISE SHOWN.
 7. SAMPLE CONNECTIONS PER SAW SKETCH 12177-A-77.
 8. ALL "2SVH" PIPING SHALL BE CLASS 301 UNLESS OTHERWISE SHOWN.
 9. ALL HV'S ARE FAIL CLOSED.
 10. ALL PRESSURE AND FLOW CONNECTIONS ARE 3/4".
 11. SAMPLE PROBE PER USE MED DOCUMENT NO. 2242788.
 12. USE #112 TP 304 VS NIPPLE AND #182 F304 300# S.V. RF FLANGE.
 13. COMPUTER GENERATED ALARM.
 14. REFER TO PID 14-F (8, C-4) FOR (HOL) HEATER DRAIN PUMP JACKET COOLER, HEATER DRAIN PUMP COOL., VPR, HEAT EXCHANGER, HEATER DRAIN PUMP MOTOR OIL BEARING COOLER, COOLING WATER PIPING ARRANGEMENT (CWS).
 15. NO FLOW SHOWN ON CORRESPONDING DOCUMENT. COORDINATE TO PROVIDE INTERFACE LOCATION.
 16. DENOTES JISSIMILAR METAL WELD.

SI APERTURE CARD
07-141-91
QA CAT II

PIPING & INSTRUMENTATION DIAGRAM
FEEDWATER HEATERS &
EXTRACTION STEAM SYSTEMS
NINE MILE POINT NUCLEAR STATION-UNIT 2
NIAGARA MOHAWK POWER CORPORATION
STONE & WEBSTER ENGINEERING CORPORATION
CHERRY HILL, N.J.

ISSUE	DESCRIPTION	CHKD	CORRECT	DATE	ISSUE	DESCRIPTION	CHKD	CORRECT	DATE	ISSUE	DESCRIPTION	CHKD	CORRECT	DATE	ISSUE	DESCRIPTION	CHKD	CORRECT	DATE	
6	INCORPORATES ECN NO. HCL-688				5	ISSUED FOR COMPUTER DATA BASE UPDATE ONLY				4	INCORPORATES ECN NO. HCL-683				3	AS TESTED ISSUE INCORPORATES ECN NO. 8 (ECL-811, 817, 821, 830, 831, 831, 882, HCL-816, 817, 821, 830, 831, 831, 882)				

12177-PID-8L-7
DESIGNED BY: D. DEL MOORE
DRAWN BY: D. DEL MOORE
CHECKED BY: E. F. CURRAN
DATE: 07-14-91

9305040091