

12177-PID-BJ-5

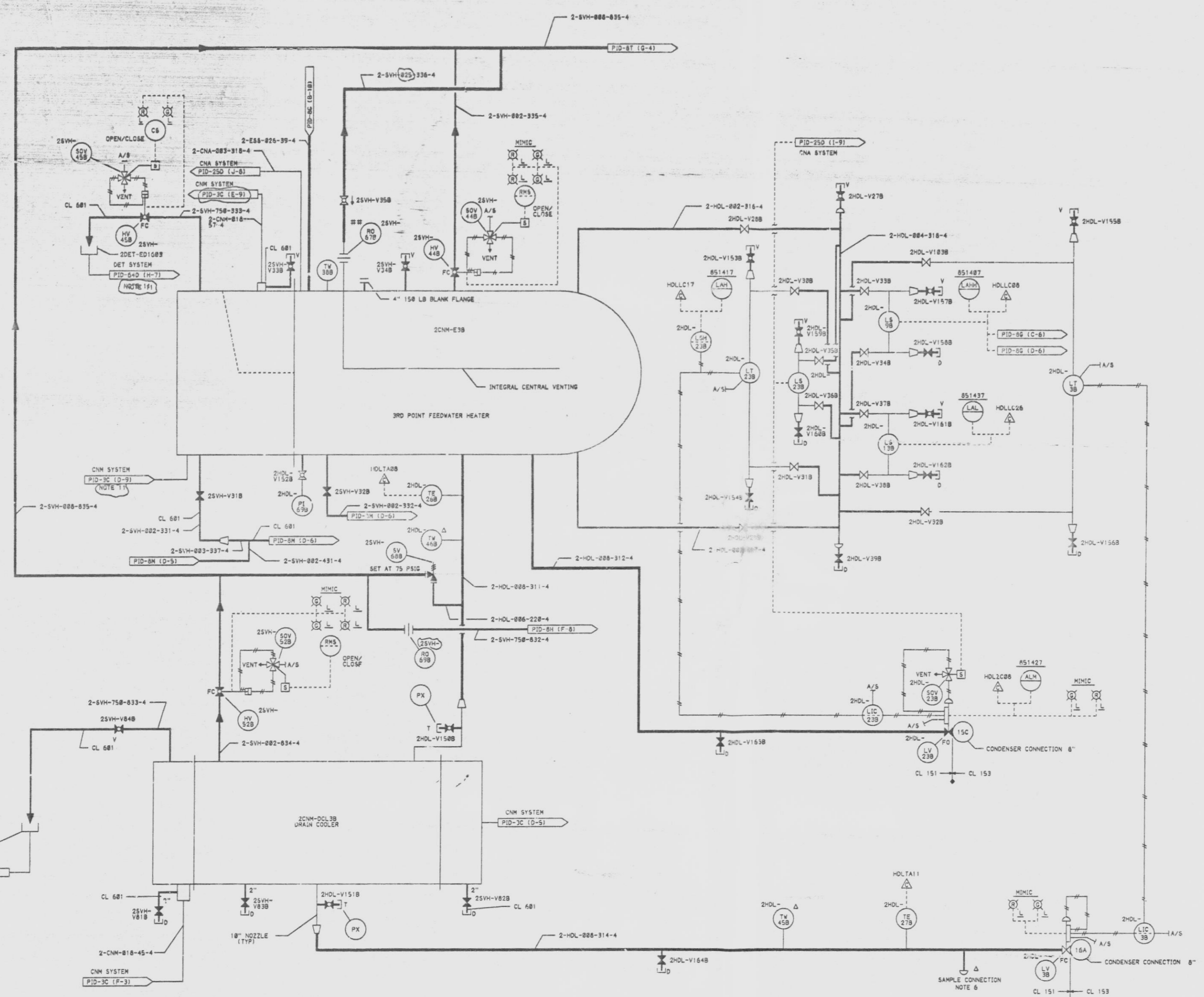
L.P. FEEDWATER HEATER DRAINS SYSTEM VALVE TABLE "2HOL"

MARK NUMBER	VALVE DESCRIPTION	SIZE	NO. OF VALVES
V278, 1588, 1519, 1520, 1538, 1539, 1578, 1598, 1618	VG886B-D-4	3/4"	9
V288, 278, 308, 318, 328, 1038	VG886B-C-4	2"	6
V328, 348, 388, 408, 418, 428, 378, 388	VG886B-C-4	1"	6
V378, 1548, 1588, 1589, 1588, 1628, 1629, 1648	VG886B-C-4	3/4"	8

FEEDWATER HEATER RELIEF VENTS & DRAINS SYSTEM VALVE TABLE "25VH"

MARK NUMBER	VALVE DESCRIPTION	SIZE	NO. OF VALVES
HV448, 528	VO8815-C-4Q	2"	2
HV458	VO886B-C-4Q	3/4"	1
V318, 328, 818, 828, 838	VG886B-C-4	2"	5
V338, 348, 848	VO886B-D-4	3/4"	3
V358	VO883B-C-4K	2-1/2"	1



- NOTES:
1. ALL INSTRUMENT & EQUIPMENT NUMBERS TO BE PREFIXED WITH "255-" EXCEPT WHERE A DIFFERENT PREFIX IS SHOWN.
  2. A CONNECTIONS ONLY PROVIDED FOR ASME TEST. INSTRUMENTS WILL NOT BE PROVIDED.
  3. ALL "2HOL" PIPING SHALL BE CLASS 151 UNLESS OTHERWISE SHOWN.
  4. ALL PIPING TO LEVEL SWITCHES IS 1", TO LEVEL TRANSMITTERS IS 2".
  5. ALL VENTS AND DRAINS ARE 3/4" UNLESS OTHERWISE SHOWN.
  6. SAMPLE CONNECTIONS PER SAW SKETCH 12177-A-77.
  7. ALL "25VH" PIPING SHALL BE CLASS 381 UNLESS OTHERWISE SHOWN.
  8. ALL HV'S ARE FAIL CLOSED.
  9. ALL PRESSURE CONNECTIONS ARE 3/4".
  10. ## TO BE SUPPLIED BY HEATER MANUFACTURER.
  11. NO FLAG SHOWN ON CORRESPONDING DOCUMENT. COORDINATES PROVIDE INTERFACE LOCATION.

SI APERTURE CARD

07-141-91

QA CAT II

PIPING & INSTRUMENTATION DIAGRAM  
 FEEDWATER HEATERS &  
 EXTRACTION STEAM SYSTEM  
 NINE MILE POINT NUCLEAR STATION-UNIT 2  
 NIAGARA MOHAWK POWER CORPORATION  
 STONE & WEBSTER ENGINEERING CORPORATION  
 CHERRY HILL, N.J.

ISSUE	DESCRIPTION	CHKD	CORRECT	DATE	ISSUE	DESCRIPTION	CHKD	CORRECT	DATE	ISSUE	DESCRIPTION	CHKD	CORRECT	DATE	ISSUE	DESCRIPTION	CHKD	CORRECT	DATE	ISSUE	DESCRIPTION	CHKD	CORRECT	DATE	
6	INCORPORATES EDC NO. 2488032				4	ISSUED FOR COMPUTER DATA BASE UPDATE ONLY				3	AS TESTED ISSUE INCORPORATES P/N NO'S 154-812, 491, 492, 208, 511, 821, 825, 101, 817, 821, 503, 101, 681, 102				1	INCORPORATES EDC NO. 511-003				1	ORIGINAL ISSUE INCORPORATES EDC NO'S 555-881 TO 889, 101-881 TO 814, 101-881 TO 884, 511-881 TO 882				

9305040084