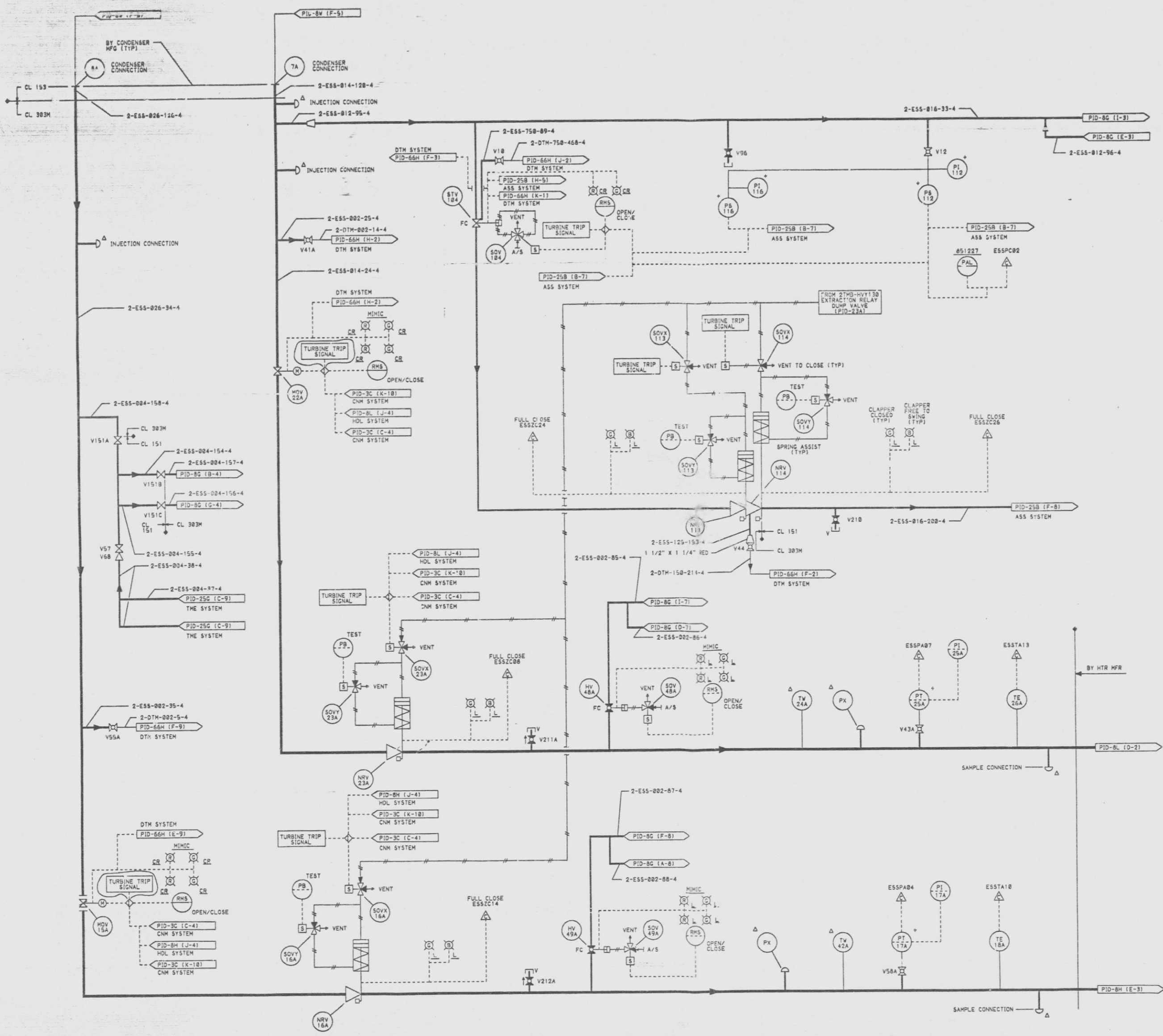


12177-PID-8F-8  
ON DRAWING

MARK NUMBER	VALVE DESCRIPTION	SIZE	NO. OF VALVES
1048A, 49A	Y0815-H-40	3"	2
10V15A	YV7800-C-490	26"	1
10V22A	YCV815-L-4910	14"	1
10V16A	YCV815-K-4950	26"	1
10V21A	YCV815-K-4950	14"	1
10V113, 114	YCV815-K-4950	16"	2
11V12A	YCV815-A-490	16"	1
V18, 17, 43A, V54A, 78, 218, V21A, 212A	Y0806B-Q-4	3/4"	8
V41A, 55A	Y0806B-Q-4	2"	2
14A	Y0806B-Q-4	1 1/2"	1
V57, 151A, V151B, 151C	YCV815-Q-4KV	4"	4
V68	YCV815-H-4K	4"	1



- NOTES:
1. ALL INSTRUMENT & EQUIPMENT NUMBERS TO BE PREFIXED WITH "2ESS-" EXCEPT WHERE A DIFFERENT PREFIX IS SHOWN.
  2. Δ CONNECTIONS ONLY PROVIDED FOR ASME TEST. INSTRUMENTS WILL NOT BE PROVIDED.
  3. \* INDICATES LOCATED IN RADIATION ZONE 4, 5, OR 6.
  4. ALL PIPING SHALL BE CLASS 303M EXCEPT WHERE OTHERWISE SHOWN.
  5. ASME PRESSURE CONNECTIONS ARE 1/2". ALL OTHER PRESSURE CONNECTIONS ARE 3/4".
  6. ALL VENTS AND DRAINS ARE 3/4" UNLESS OTHERWISE SHOWN.

SI APERTURE CARD

07-141-91

QA CAT II

NINE MILE POINT  
NUCLEAR STATION - UNIT 2  
SCRBA, N.Y.  
PIPING & INSTRUMENTATION DIAGRAM  
FEEDWATER HEATERS &  
EXTRACTION STEAM SYSTEMS

REV	DATE	DESIGN/ENR OF REVISION	M.D.	DFT	DES	CHKD	ENG	ELEC	MECH	STR	MP	REV	DATE	DESCRIPTION OF REVISION	M.D.	DFT	DES	CHKD	ENG	JEM	KAH	JRM	UB	JRM	SCALE	DRAWING NO
1	2-19-91	INCORPORATES E.C.N. NO. 2-19-91 MOD. NO. P21708W188 INCORPORATES NEW BORDER											3-3-89	INCORPORATES E.C.N. NO. 2-19-91											12177-PID-8F-8	

9305040059 D