

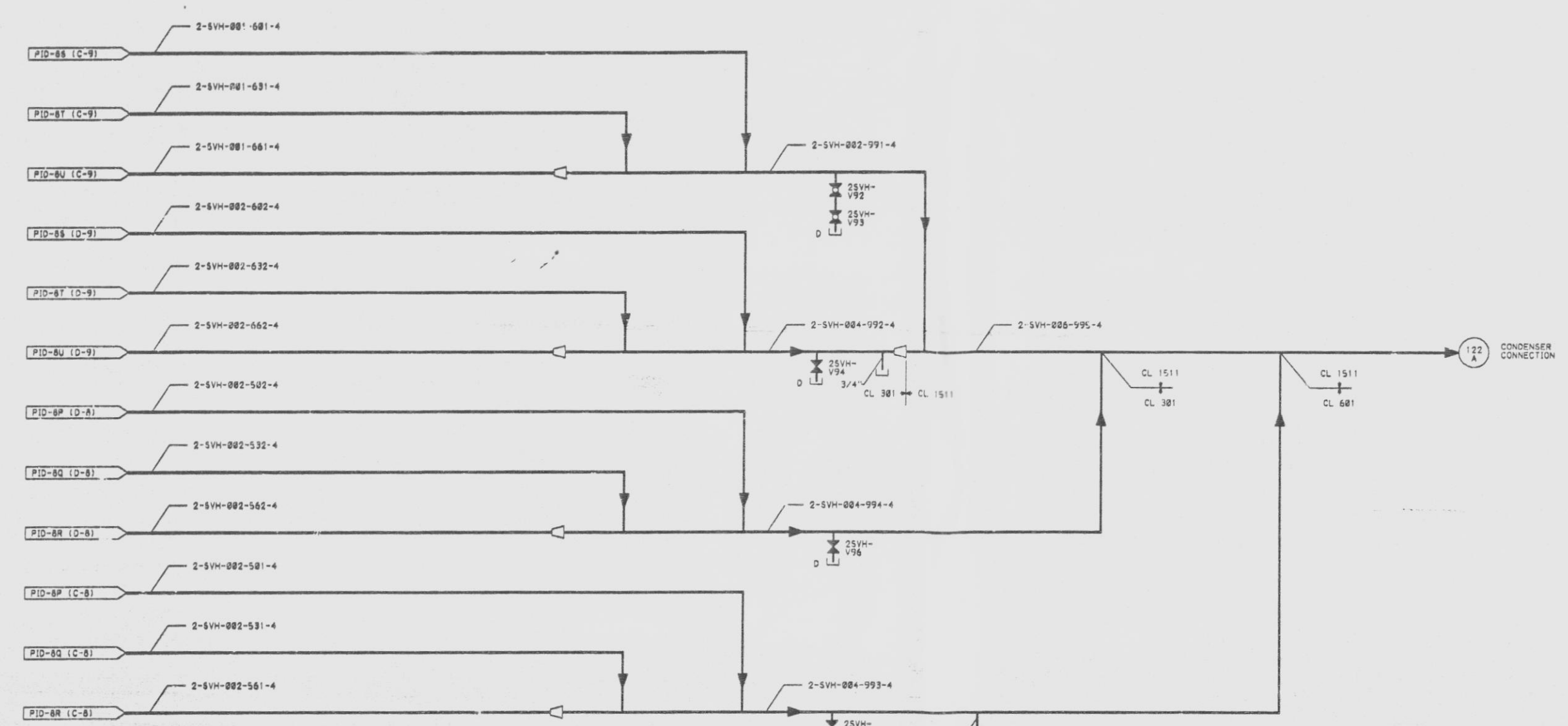
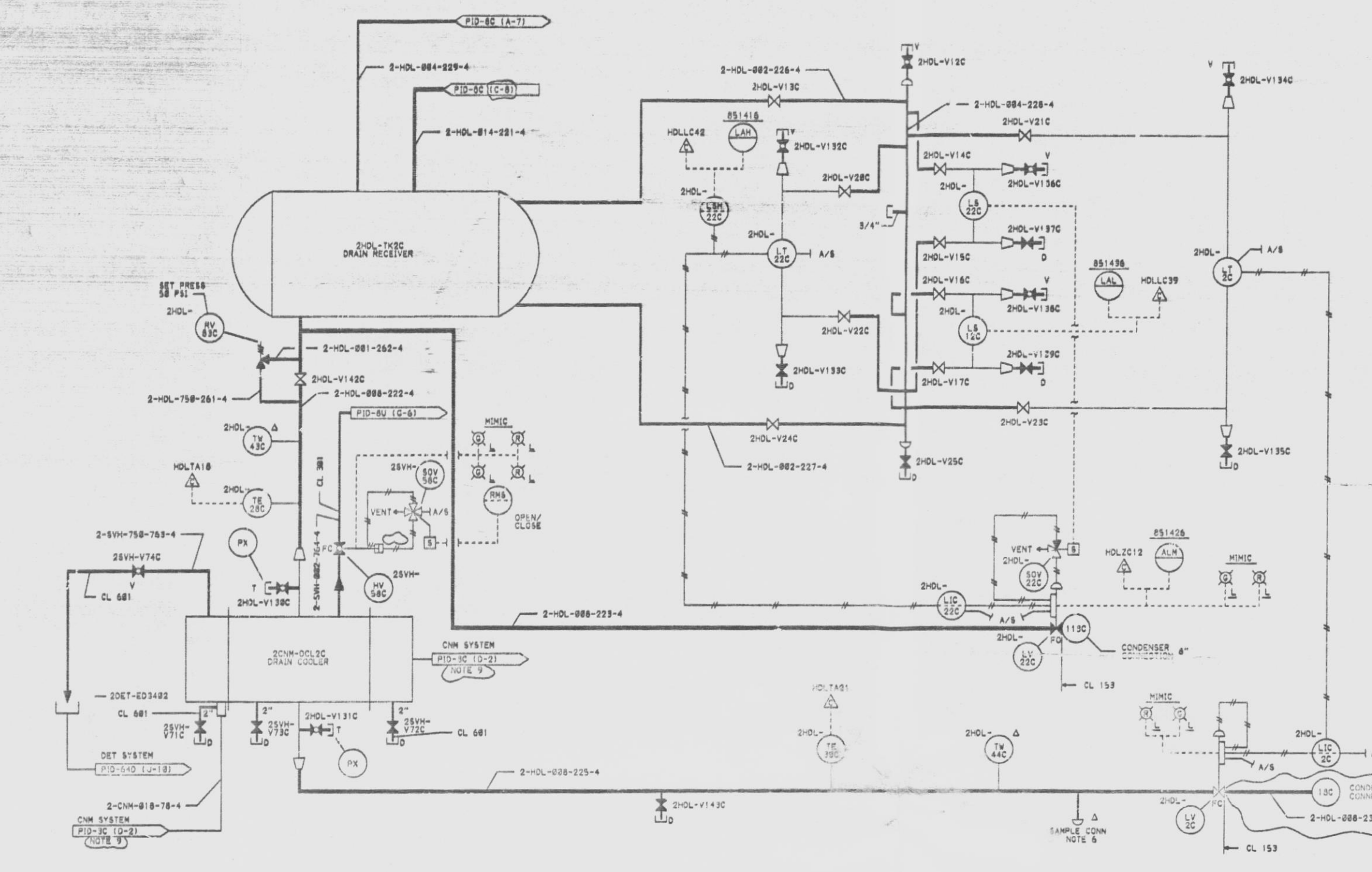
12177-PID-8E-5

L.P. FEEDWATER HEATER DRAINS SYSTEM  
VALVE TABLE "2HOL"

MARK NUMBER	VALVE DESCRIPTION	SIZE	NO. OF VALVES
V10C, 110C, V13C, 140C, V15C, 160C	V0800-C-4	2"	6
V14C, 15C, V16C, 17C	V0800-C-4	1"	4
V18C, 19C, V20C, 21C, V22C, 23C	V0800-C-4	3/4"	7
V24C, 25C, V26C, 27C, V28C, 29C, V30C, 31C	V0800-C-4	3/4"	6
V42C	V0800-C-4K	6"	1

FEEDWATER HEATER BELIEF, VENTS & DRAINS  
SYSTEM VALVE TABLE "28VH"

MARK NUMBER	VALVE DESCRIPTION	SIZE	NO. OF VALVES
V43C, 44C, V45C, 46C	V0800-C-4K	2"	4
V47C, 48C, V49C, 50C, V51C, 52C, V53C, 54C	V0800-C-4	3/4"	1
V55C, 56C, V57C, 58C, V59C, 60C, V61C, 62C, V63C, 64C	V0800-C-4	3/4"	1
V65C, 66C, V67C, 68C, V69C, 70C, V71C, 72C, V73C, 74C	V0800-C-4	3/4"	1
V75C, 76C, V77C, 78C, V79C, 80C, V81C, 82C, V83C, 84C	V0800-C-4	3/4"	1



- NOTES:
1. ALL INSTRUMENT & EQUIPMENT NUMBERS TO BE PREFIXED WITH "28VH" EXCEPT WHERE A DIFFERENT PREFIX IS SHOWN.
  2. O. CONNECTIONS ONLY PROVIDED FOR ASME TEST. INSTRUMENTS WILL NOT BE PROVIDED.
  3. ALL "2HOL" PIPING SHALL BE CLASS 151 UNLESS OTHERWISE SHOWN.
  4. ALL PIPING TO LEVEL SWITCHES IS 1" TO LEVEL TRANSMITTERS IS 2".
  5. ALL VENTS AND DRAINS ARE 3/4" UNLESS OTHERWISE SHOWN.
  6. SAMPLE CONNECTIONS PER SAN SKETCH 12177-A-71.
  7. ALL "28VH" PIPING SHALL BE CLASS 381 UNLESS OTHERWISE SHOWN.
  8. ALL HV'S ARE FAIL CLOSED.
  9. NO TAG SHOWN ON CORRESPONDING DOCUMENT. COORDINATES PROVIDE INTERFACE LOCATION.

SI APERTURE CARD

07-141-91  
QA CAT II

PIPING & INSTRUMENTATION DIAGRAM  
FEEDWATER HEATERS &  
EXTRACTION STEAM SYSTEMS  
NINE MILE POINT NUCLEAR STATION-UNIT 2  
NIAGARA MOHAWK POWER CORPORATION  
STONE & WEBSTER ENGINEERING CORPORATION  
CHEERY HILLS, N.J.

NO.	DESCRIPTION	CHKD	CORRECT	DATE	BY	REVISION	DESCRIPTION
1	ISSUED FOR COMPUTER DATA BASE UPDATE ONLY						
2	INCORPORATES EGN NO. 283						
3	AS TESTER ISSUE						

9305040055

THIS DRAWING CREATED ELECTRONICALLY