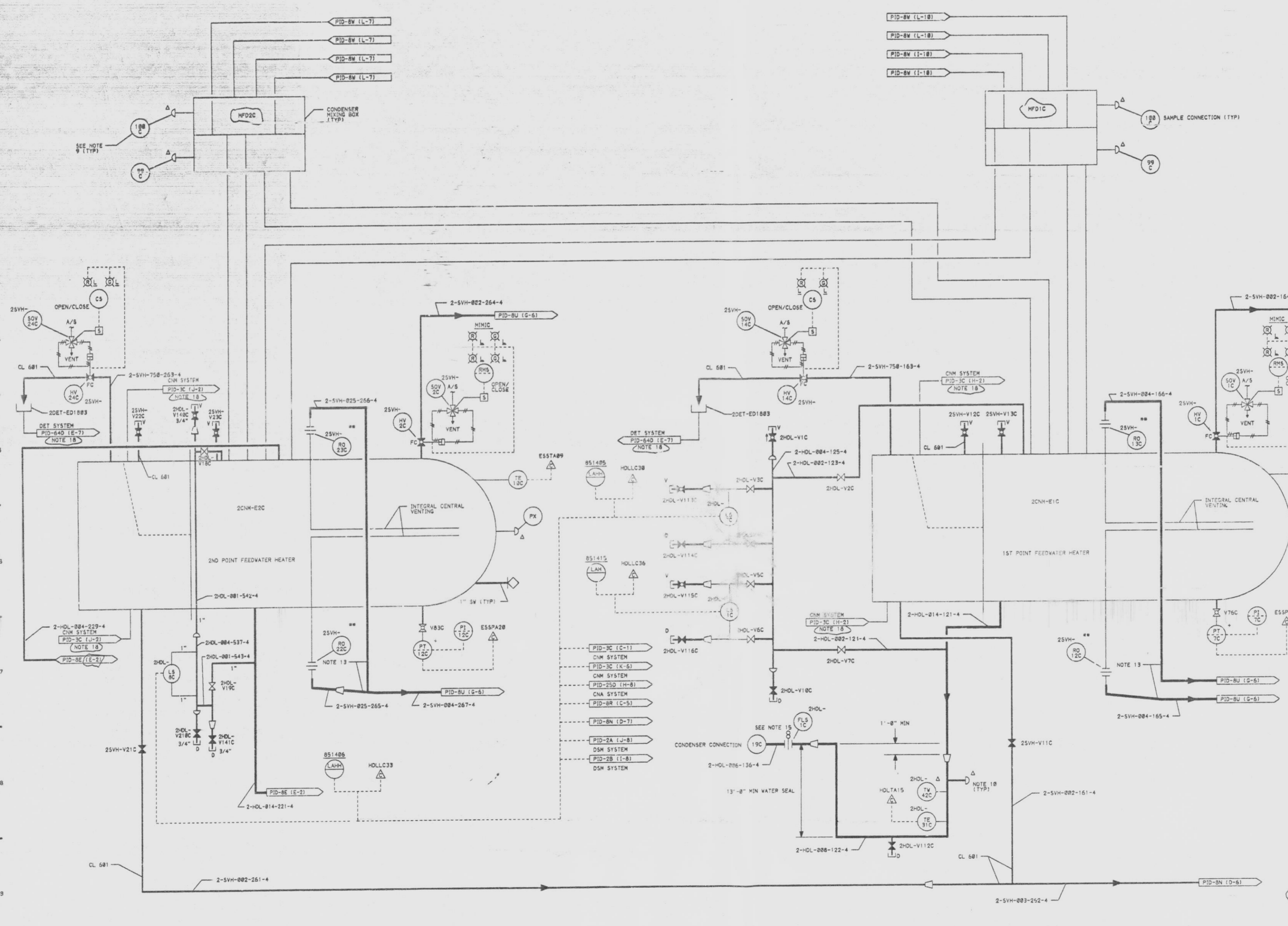


12177-PID-8C-7



EXTRACTION STEAM SYSTEM VALVE TABLE

MARK NUMBER	VALVE DESCRIPTION	SIZE	NO. OF VALVES
V76C,83C	V05868-E-4	3/4"	2

L.P. FEEDWATER HEATER DRAINS SYSTEM VALVE TABLE "25VH"

MARK NUMBER	VALVE DESCRIPTION	SIZE	NO. OF VALVES
V113C,113C	V05868-D-4	3/4"	4
V2C,7C	V05868-C-4	2"	2
V3C,4C,5C	V05868-C-4	1"	6
V116C,116C,141C,213C	V05868-C-4	3/4"	6

FEEDWATER HEATER RELIEF VENTS & DRAINS SYSTEM VALVE TABLE "25VH"

MARK NUMBER	VALVE DESCRIPTION	SIZE	NO. OF VALVES
HV1C,24C	V05815-C-4Q	2"	2
HV14C,24C	V05868-C-4Q	3/4"	2
V11C,21C	V05868-C-4	2"	2
V12C,13C, V22C,23C	V05868-D-4	3/4"	4

- NOTES:
1. ALL INSTRUMENT & EQUIPMENT NUMBERS TO BE PREFIXED WITH "2555" EXCEPT WHERE A DIFFERENT PREFIX IS SHOWN.
  2. Δ CONNECTIONS ONLY PROVIDED FOR ASME TEST. INSTRUMENTS WILL NOT BE PLUMBING.
  3. \* INDICATES LOCATED IN RADIATION ZONE 4, 5, OR 6.
  4. HEATERS ARE LOCATED IN CONDENSER NECK.
  5. ALL "2555" PIPING SHALL BE CLASS 153.
  6. ASME PRESSURE CONNECTIONS ARE 1/2". ALL OTHER PRESSURE CONNECTIONS ARE 3/4".
  7. ALL VENTS AND DRAINS ARE 3/4" UNLESS OTHERWISE SHOWN.
  8. CONDENSER CONNECTIONS ARE PROVIDED FOR ALL ASME INJECTION & SAMPLE CONNECTIONS. SEE SAW FILE NO. 4.819-003-004.
  9. SAMPLE CONNECTIONS, SPEC. 130C NUMBERS IN CIRCLES ARE CONDENSER/TURBINE SKIRT CONNECTION NUMBERS. TAPS ARE PIPED BY OTHERS.
  10. SAMPLE CONNECTIONS PER SAW SKETCH 12177-A-77.
  11. ALL PIPING TO LEVEL SWITCHES IS 1". TO LEVEL TRANSMITTERS IS 2".
  12. ALL 1/2" ARE FAIL CLOSED.
  13. OPERATING VENT PIPING MUST SLOPE CONTINUOUSLY TO CONDENSER.
  14. ALL "2HOL" PIPING SHALL BE CLASS 151 EXCEPT WHERE OTHERWISE SHOWN.
  15. PROVISIONS FOR FUTURE INSTALLATION OF DRIFTE-SPACER TO BE INITIALLY PROVIDED.
  16. ALL "25VH" PIPING SHALL BE CLASS 301 EXCEPT WHERE OTHERWISE SHOWN.
  17. \*\* DENOTES SUPPLIED BY HEATER MANUFACTURER.
  18. UNCLAG SHOWN ON CORRESPONDING DOCUMENT. COORDINATES PROVIDE INTERFACE LOCATION.

SI APERTURE CARD

07-141-91  
QA CAT II

PIPING & INSTRUMENTATION DIAGRAM  
FEEDWATER HEATERS &  
EXTRACTION STEAM SYSTEMS  
NINE MILE POINT NUCLEAR STATION-UNIT 2  
NIAGARA MOHAWK POWER CORPORATION  
STONE & WEBSTER ENGINEERING CORPORATION  
CHERRY HILL, N.J.

ISSUE	DESCRIPTION	CHKD	CORRECT	DATE	DESCRIPTION	CHKD	CORRECT	DATE	DESCRIPTION	CHKD	CORRECT	DATE	DESCRIPTION	CHKD	CORRECT	DATE	DESCRIPTION	CHKD	CORRECT	DATE				
6	INCORPORATES EDC NO. H0L-687 MOD NO. P018B0485	BAL	---	8-28-84	ISSUED FOR COMPUTER DATA BASE UPDATE ONLY	RJB	---	8-28-84	INCORPORATES EDC NO. ESS-584	MKA/EQL	---	8-28-84	AS TESTED 1986 INCORPORATES EDC NO. 5VH-004	MKA/EQL	---	8-28-84	REVISOR NOTE 8 INCORPORATES EDC NO. 2M08832	EFC	---	8-28-84	INCORPORATES EDC NO. 2M08832	JRM	---	8-28-84

9305040032

THIS DRAWING CREATED ELECTRONICALLY