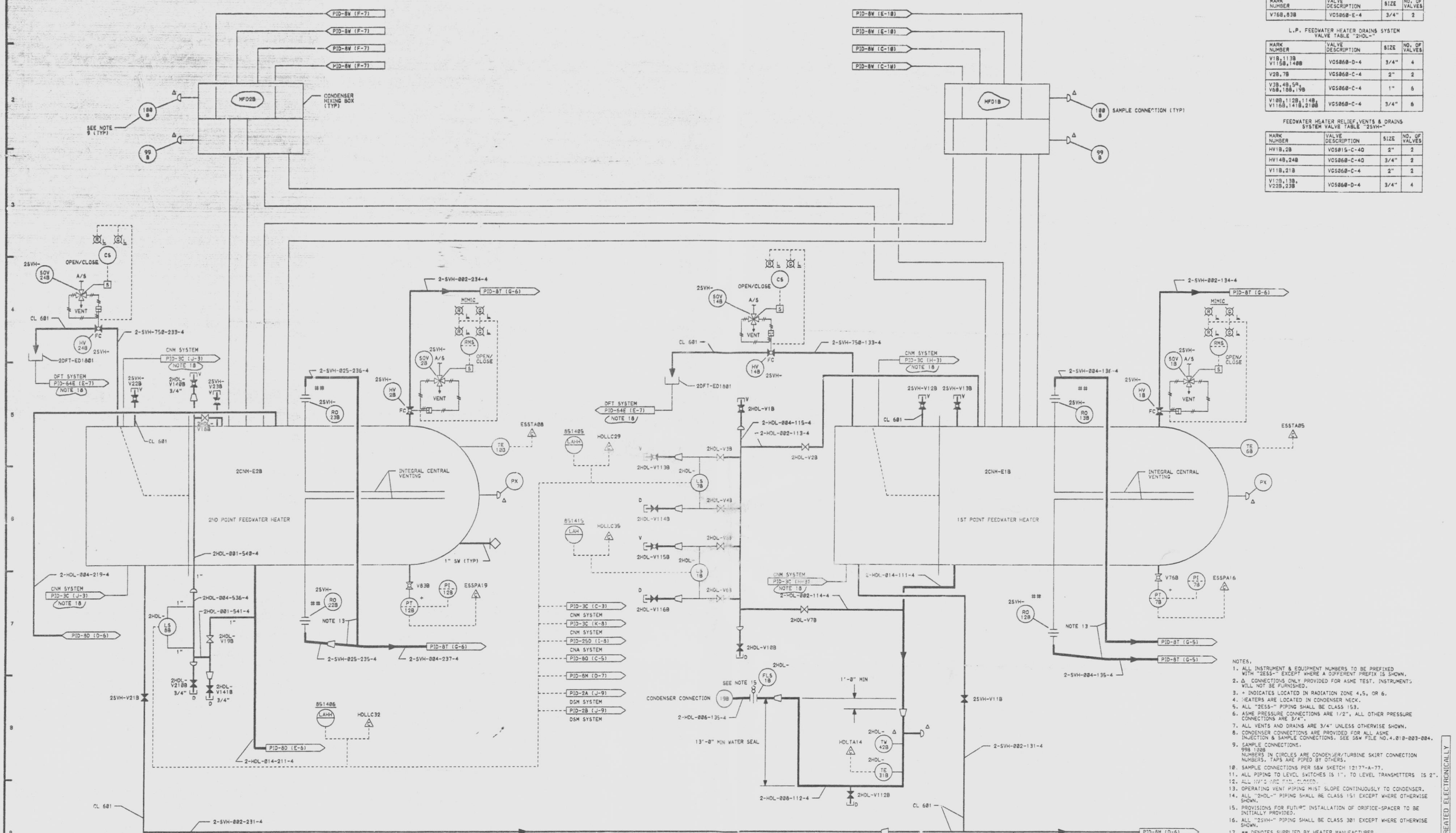


12177-PID-8B-7



EXTRACTION STEAM SYSTEM VALVE TABLE

MARK NUMBER	VALVE DESCRIPTION	SIZE	NO. OF VALVES
V76B, 83B	VOS86B-E-4	3/4"	2

L.P. FEEDWATER HEATER DRAINS SYSTEM VALVE TABLE "2HOL"

MARK NUMBER	VALVE DESCRIPTION	SIZE	NO. OF VALVES
V18, 113B, 148B	VOS86B-D-4	3/4"	4
V28, 7B	VOS86B-C-4	2"	2
V38, 4B, 5B, 10B, 10B, 11B	VOS86B-C-4	1"	6
V18B, 112B, 148B, 218B, 218B	VOS86B-C-4	3/4"	6

FEEDWATER HEATER RELIEF VENTS & DRAINS SYSTEM VALVE TABLE "25VH"

MARK NUMBER	VALVE DESCRIPTION	SIZE	NO. OF VALVES
HV18, 2B	VOS815-C-4Q	2"	2
HV14B, 24B	VOS86B-C-4Q	3/4"	2
V11B, 21B	VOS86B-C-4	2"	2
V12B, 13B, 22B, 23B	VOS86B-D-4	3/4"	4

- PID-3C (C-3)
- CNM SYSTEM
- PID-3C (K-3)
- CNM SYSTEM
- PID-2SD (I-3)
- CNA SYSTEM
- PID-8C (C-5)
- PID-8M (D-7)
- PID-2A (J-9)
- DSM SYSTEM
- PID-2B (J-9)
- DSM SYSTEM

- NOTES:
1. ALL INSTRUMENT & EQUIPMENT NUMBERS TO BE PREFIXED WITH "ESS" EXCEPT WHERE A DIFFERENT PREFIX IS SHOWN.
  2. Δ CONNECTIONS ONLY PROVIDED FOR ASME TEST. INSTRUMENTS WILL NOT BE FURNISHED.
  3. \* INDICATES LOCATED IN RADIATION ZONE 4, 5, OR 6.
  4. HEATERS ARE LOCATED IN CONDENSER NECK.
  5. ALL "25SS" PIPING SHALL BE CLASS 153.
  6. ASME PRESSURE CONNECTIONS ARE 1/2". ALL OTHER PRESSURE CONNECTIONS ARE 3/4".
  7. ALL VENTS AND DRAINS ARE 3/4" UNLESS OTHERWISE SHOWN.
  8. CONDENSER CONNECTIONS ARE PROVIDED FOR ALL ASME INJECTION & SAMPLE CONNECTIONS. SEE SSV FILE NO. 4.810-003-004.
  9. SAMPLE CONNECTIONS: 99B 100B NUMBERS IN CIRCLES ARE CONDENSER/TURBINE SKIRT CONNECTION NUMBERS. TAPS ARE PIPED BY OTHERS.
  10. SAMPLE CONNECTIONS PER S&W SKETCH 12177-A-77.
  11. ALL PIPING TO LEVEL SWITCHES IS 1". TO LEVEL TRANSMITTERS IS 2".
  12. ALL 1/2" & 3/4" ARE 25SS.
  13. OPERATING VENT PIPING MUST SLOPE CONTINUOUSLY TO CONDENSER.
  14. ALL "2HOL" PIPING SHALL BE CLASS 151 EXCEPT WHERE OTHERWISE SHOWN.
  15. PROVISIONS FOR FUTURE INSTALLATION OF ORIFICE-SPACER TO BE INITIALLY PROVIDED.
  16. ALL "25VH" PIPING SHALL BE CLASS 301 EXCEPT WHERE OTHERWISE SHOWN.
  17. \*\* DENOTES SUPPLIED BY HEATER MANUFACTURER.
  18. NO FLAG SHOWN ON CORRESPONDING DOCUMENT. COORDINATES PROVIDE INTERFACE LOCATION.

SI APERTURE CARD

07-141-91  
QA CAT II

PIPING & INSTRUMENTATION DIAGRAM  
FEEDWATER HEATERS &  
EXTRACTION STEAM SYSTEMS  
NINE MILE POINT NUCLEAR STATION-UNIT 2  
NIAGARA MOHAWK POWER CORPORATION  
STONE & WEBSTER ENGINEERING CORPORATION  
CHERRY HILL, N.J.

ISSUE	DESCRIPTION	CHKD	CORRECT	ISSUE	DESCRIPTION	CHKD	CORRECT	ISSUE	DESCRIPTION	CHKD	CORRECT
6	INCORPORATES ECN NO. 2M08832	BAL	---	5	ISSUED FOR COMPUTER DATA BASE UPDATE ONLY	JRB	---	4	INCORPORATES ECN NO. 555-624	JRB	---

9305040030