

12177-PID-8A-7

EXTRACTION STEAM SYSTEM VALVE TABLE

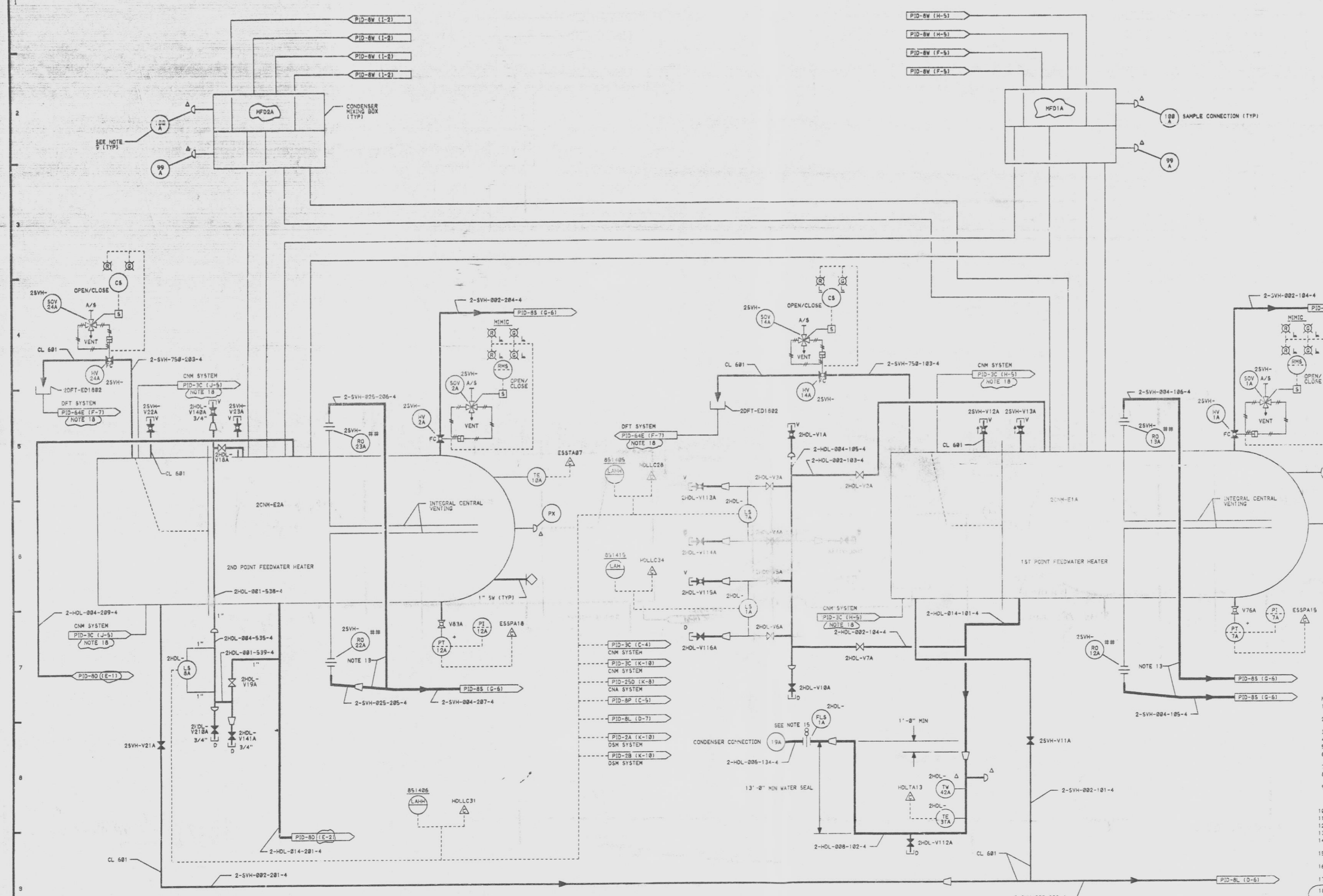
MARK NUMBER	VALVE DESCRIPTION	SIZE	NO. OF VALVES
V75A, 83A	VOS868-E-4	3/4"	2

L.P. FEEDWATER HEATER DRAINS SYSTEM VALVE TABLE "25VH"

MARK NUMBER	VALVE DESCRIPTION	SIZE	NO. OF VALVES
V1A, 113A, V15A, 148A	VOS868-D-4	3/4"	4
V2A, 7A	VOS868-C-4	2"	2
V3A, 4A, 5A, V6A, 10A, 110A	VOS868-C-4	1"	6
V10A, 112A, 114A, V16A, 141A, V21A	VOS868-C-4	3/4"	6

FEEDWATER HEATER RELIEF, VENTS & DRAINS SYSTEM VALVE TABLE "25VH"

MARK NUMBER	VALVE DESCRIPTION	SIZE	NO. OF VALVES
HV1A, 2A	VOS815-C-4Q	2"	2
HV1A, 2A	VOS868-C-4Q	3/4"	2
V11A, 21A	VOS868-C-4	2"	2
V12A, 13A, V22A, 23A	VOS868-D-4	3/4"	4



- NOTES:
1. ALL INSTRUMENT & EQUIPMENT NUMBERS TO BE PREFIXED WITH "2535" EXCEPT WHERE A DIFFERENT PREFIX IS SHOWN.
  2. CONNECTIONS ONLY PROVIDED FOR ASME TEST. INSTRUMENTS SHALL NOT BE FURNISHED.
  3. \* INDICATES LOCATED IN RADIATION ZONE 4, 5, OR 6.
  4. HEATERS ARE LOCATED IN CONDENSER NECK.
  5. ALL "2535" PIPING SHALL BE CLASS 153.
  6. ASME PRESSURE CONNECTIONS ARE 1/2". ALL OTHER PRESSURE CONNECTIONS ARE 3/4".
  7. ALL VENTS AND DRAINS ARE 3/4" UNLESS OTHERWISE SHOWN.
  8. CONDENSER CONNECTIONS ARE PROVIDED FOR ALL ASME INJECTION & SAMPLE CONNECTIONS. SEE SAW FILE NO. 4.010-003-004.
  9. SAMPLE CONNECTIONS:
    - 9A 100A
    - NUMBERS IN CIRCLES ARE CONDENSER/TURBINE SKIRT CONNECTION NUMBERS. TAPS ARE PIPED BY OTHERS.
  10. SAMPLE CONNECTIONS PER SAW SKETCH 12177-A-77.
  11. ALL PIPING TO LEVEL SWITCHES IS 1", TO LEVEL TRANSMITTERS IS 2".
  12. ALL HV'S ARE FAIL CLOSED.
  13. OPERATING VENT PIPING MUST SLOPE CONTINUOUSLY TO CONDENSER.
  14. ALL "2HOL" PIPING SHALL BE CLASS 151 EXCEPT WHERE OTHERWISE SHOWN.
  15. PROVISIONS FOR FUTURE INSTALLATION OF ORIFICE-SPACER TO BE DETAILER PROVIDED.
  16. ALL "25VH" PIPING SHALL BE CLASS 301 EXCEPT WHERE OTHERWISE SHOWN.
  17. #\* DENOTES SUPPLIED BY HEATER MANUFACTURER.
  18. NO TAGS SHOWN ON CORRESPONDING DOCUMENT. COORDINATES PROVIDE INTERFACE LOCATION.

SI APERTURE CARD

07-141-91

QA CAT II

PIPING & INSTRUMENTATION DIAGRAM  
FEEDWATER HEATERS &  
EXTRACTION STEAM SYSTEMS

NINE MILE POINT NUCLEAR STATION-UNIT 2  
NIAGARA MOHAWK POWER CORPORATION

STONE & WEBSTER ENGINEERING CORPORATION  
CHERRY HILL, N.J.

DRAWING NUMBER 12177-PID-8A-7

ISSUE	DESCRIPTION	CHKD	CORRECT	ISSUE	DESCRIPTION	CHKD	CORRECT	ISSUE	DESCRIPTION	CHKD	CORRECT
6	INCORPORATES ECN H01-687 MOD. NO. PN2Y8X855	BAL	---	5	ISSUED FOR COMPUTER DATA BASE UPDATE ONLY	RUB	---	4	INCORPORATES ECN NO. ESS-684	JWR	---
5	---	---	---	4	---	---	---	3	AS-TESTED ISSUE INCORPORATES ECN NO'S H01-021, ESS-812, 431, 482, 508, 510, 503, 085, H01-016, 017, 508, 507, 081, 082	---	---
4	---	---	---	3	---	---	---	2	REVISED NOTE & INCORPORATES ECN NO. 5VH-084	---	---
3	---	---	---	2	---	---	---	1	INCORPORATES ECN NO. 2H08032	---	---

9305030371