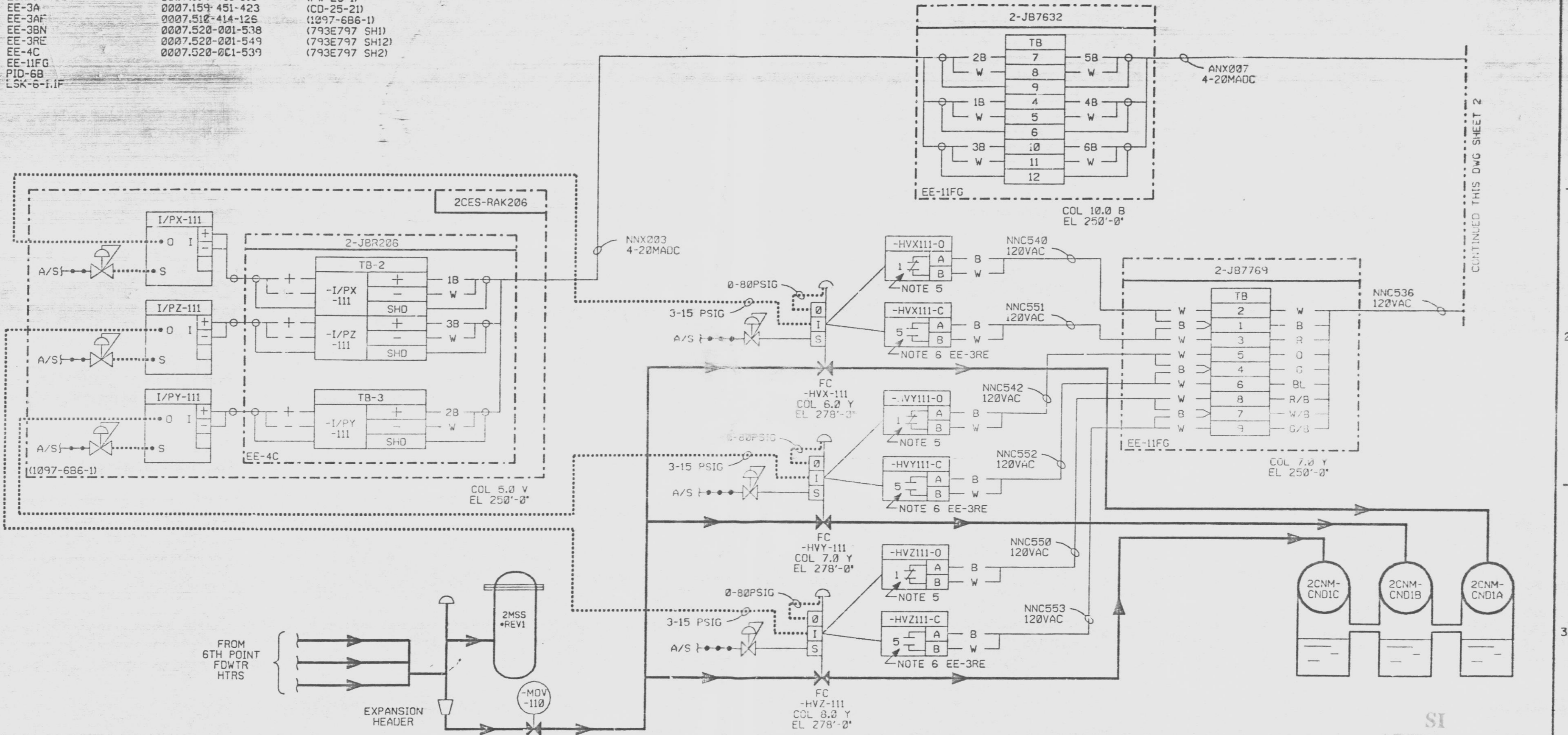


REFERENCES:

ESK-7FWS04	0007.159-451-315	(PW-25-1)
EE-3A	0007.159-451-423	(CD-25-21)
EE-3AF	0007.510-414-126	(1097-6B6-1)
EE-3BN	0007.520-001-538	(793E797 SH1)
EE-3RE	0007.520-001-549	(793E797 SH12)
EE-4C	0007.520-001-539	(793E797 SH2)
EE-11FG		
PID-6B		
ESK-6-1.F		



NOTES:

1. PLANT IMPACT: 2FWS-HVX111, HVY111 & HVZ111 ARE REQUIRED DURING REACTOR START-UP ONLY.
2. ALL INSTRUMENT AND EQUIPMENT NUMBERS ARE TO BE PREFIXED WITH '2FWS' EXCEPT WHERE A DIFFERENT PREFIX IS SHOWN.
3. LOOP ACTION: HIC-111 CONTROLS THE MODULATION OF VALVES HVX-111 VIA HIC-111, FY-111, HYX-111, E/IX-111, I/PX-111; HVY-111 VIA HIC-111, FY-111, HYY-111, E/IY-111, I/PY-111; HVZ-111 VIA HIC-111, FY-111, HYZ-111, E/IZ-111, I/PZ-111. THE OPENING OF THE VALVES ARE STAGED SUCH THAT HVY-111 WILL START OPENING WHEN HVX-111 IS 100% OPEN AND HVZ-111 WILL START OPENING WHEN HVY-111 IS 100% OPEN.
4. 120VAC FROM 2SCI-PNLB101 CKT #24, VIA 2CEC-PNL751, BAY A.
5. CONTACT OPENS WHEN VALVE IS FULL OPEN.
6. CONTACT OPENS WHEN VALVE IS FULL CLOSED.

PLANT USE ONLY - PRINT APPROVAL		
APPR.	APPR.	APPR.
DATE	DATE	DATE
I&C	SSS	CSO

NUCLEAR NON-SAFETY RELATED

NIAGARA MOHAWK NINE MILE POINT NUCLEAR STATION - UNIT 2 SCRIBA, N.Y.

TEST LOOP DIAGRAM
HI ENERGY FWTR CYCLE
CLEAN-UP CONTROL
2FWS-HVX-111, -HVY-111, -HVZ-111

SCALE: NONE DRAWING NO: TL2FWS-015 SH.1 OF 2

2	2-1-91	CEM	EDITORIAL CORRECTION ONLY (REF. PR09504)	1	06-13-89	AED	ORIGINAL ISSUE	POB	AKJ
MK	DATE	BY	DESCRIPTION	CK	APP	MK	DATE	BY	MF

9305030263 07-127-91 9305030263

CONTINUED THIS DWG SHEET 2