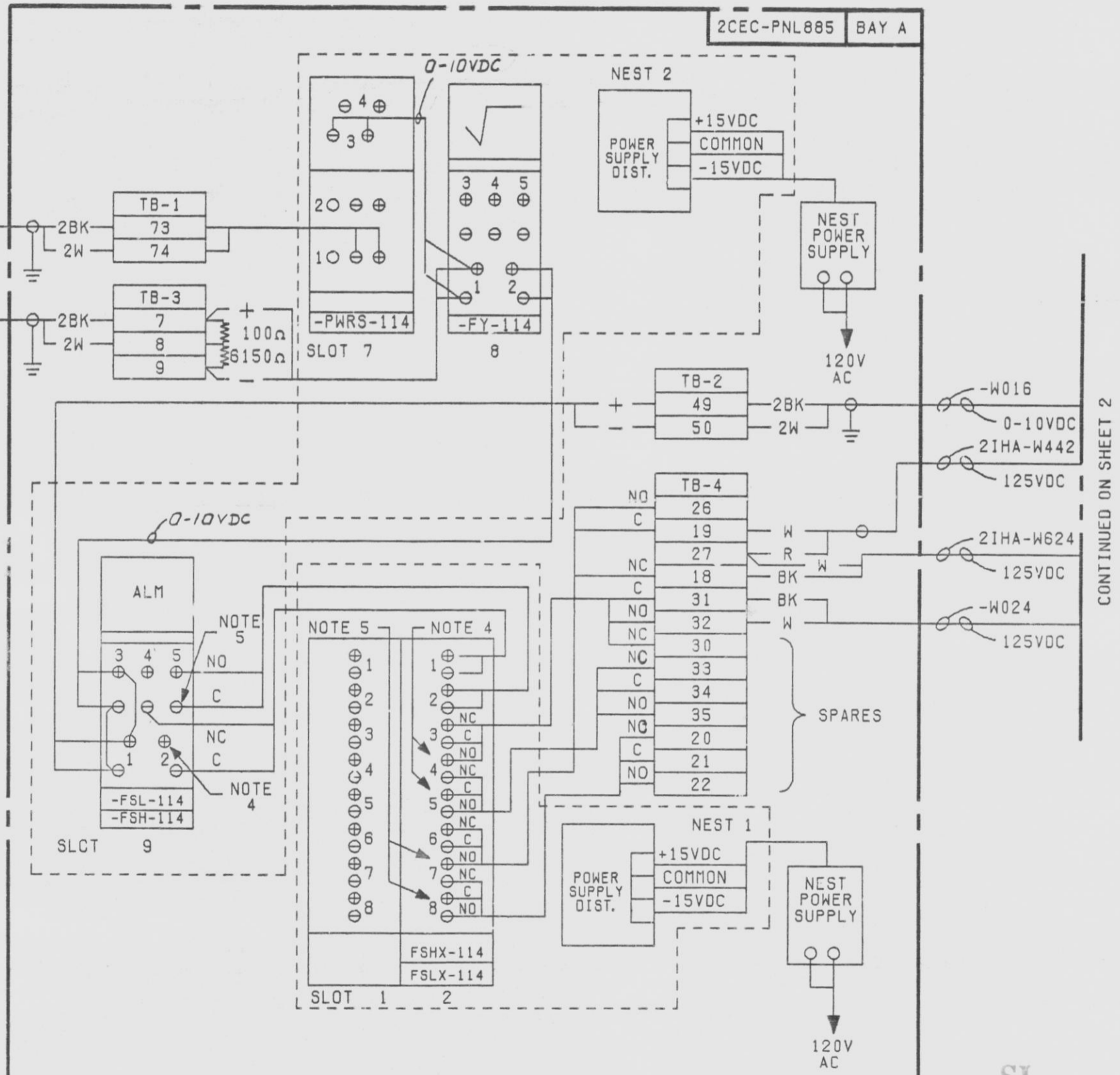
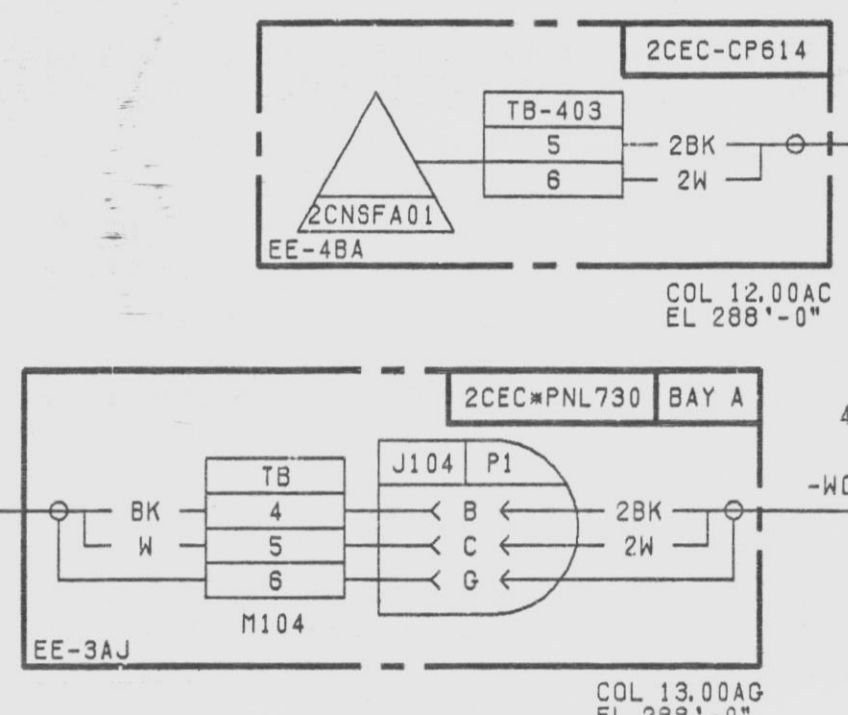
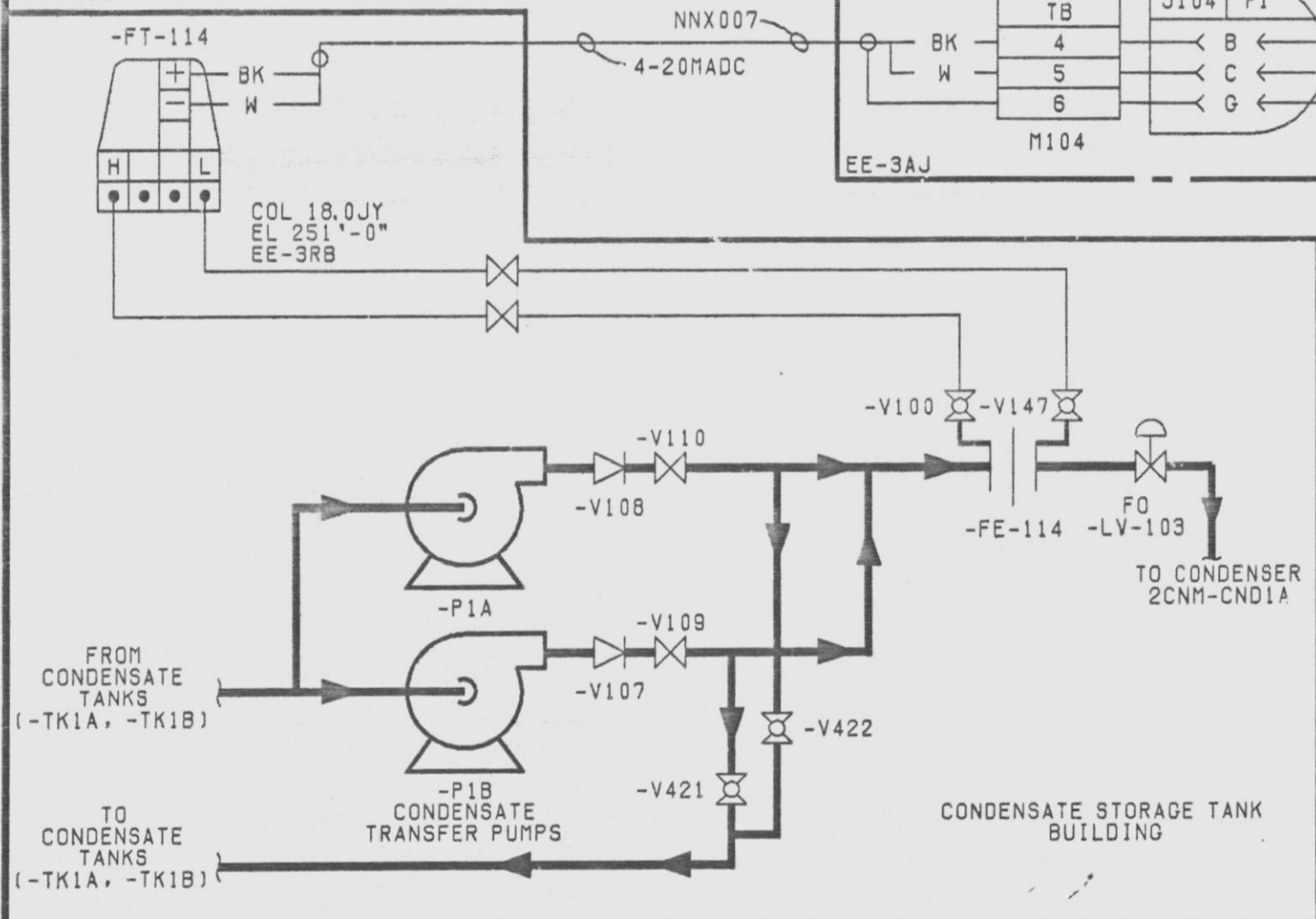


REFERENCES:

FSK-4-3C	0007,520-001-540	(793E797 SH3)
LSK-4-3B	0007,520-001-589	(793E799 SH11)
ESK-11CNS01	0007,521-001-056	(793E799 SH1A)
ESK-6CNS04	2CNS-114	
ESK-6CNS05	EE-3RB	
ESK-101HA418	ECN-10AC	
EE-3K	ECN-CN5-605	
EE-4BA		
EE-4BH		
EE-3AV		
EE-3AJ		
EE-9WJ		
0001,330-210-416	(51895-E-3122)	
0001,330-210-420	(51895-E-3127)	
0001,330-210-410	(51895-E-3130)	
0007,159-451-400	(CD-85-21)	
0007,520-001-551	(793E797 SH14)	
0007,520-001-579	(793E799 SH1)	
0007,520-001-585	(793E799 SH7)	



NOTES:

- FOR TEST PURPOSES ONLY-NOT TO BE USED FOR CONSTRUCTION.
- ALL INSTRUMENT AND EQUIPMENT NUMBERS ARE TO BE PREFIXED WITH "2CNS" EXCEPT WHERE A DIFFERENT PREFIX IS SHOWN.
- LOOP ACTION: FT-114 MONITORS P1A & P1B DISCHARGE FLOW AND PROVIDES FLOW SIGNALS TO FSH-114, FSL-114 & FI-114 VIA PWR5-114 AND FY-114, AND TO COMPUTER VIA PWR5-114. FSH-114 ACTUATES ON HIGH DISCHARGE FLOW ACTUATING FSHX-114 TO ENABLE TO START LAG PUMP (P1A OR P1B) AFTER A MINIMUM DELAY AND TO ENERGIZE COMPUTER & ANNUNCIATOR ALARMS. FSL-114 ACTUATES ON LOW DISCHARGE FLOW ACTUATING FSLX-114 ENERGIZING COMPUTER AND ANNUNCIATOR ALARM IF BOTH LEAD & LAG PUMPS (P1A & P1B) ARE RUNNING. WHEN BOTH P1A & P1B ARE RUNNING AND FLOW IS NORMAL ONE OF THE PUMPS (P1A OR P1B) MAY BE STOPPED MANUALLY.
- NORMALLY CLOSED (NC) CONTACT CLOSING ON HIGH FLOW. NORMALLY OPEN (NO) CONTACT OPENS ON HIGH FLOW.
- NORMALLY OPEN (NO) CONTACT CLOSING ON LOW FLOW. NORMALLY CLOSED (NC) CONTACT CLOSING ON LOW FLOW.
- CONTACT CLOSING (62B-2CNS03 ENERGIZED) AFTER A MINIMUM TIME DELAY ON HIGH DISCHARGE FLOW WHEN P1A AND/OR P1B IS RUNNING TO ENERGIZE 62B-2CNS03.
- 62B-2CNS03 ENERGIZES WHEN 62B-2CNS03 IS ENERGIZED. TO CLOSE CONTACT M1.T1 TO ENERGIZE COMPUTER AND ANNUNCIATOR ALARMS. CLOSE M2.T2 TO ENABLE STARTING P1A (AS LAG PUMP) IF PUMP P1B (LEAD PUMP) IS RUNNING. CLOSE CONTACT M3.T3 TO ENABLE STARTING P1B (AS LAG PUMP) IF P1A (LEAD PUMP) IS RUNNING. SEE ESK-11CNS01.
- CONTACTS CLOSE WHEN PUMP P1A IS RUNNING.
- CONTACTS CLOSE WHEN PUMP P1B IS RUNNING.
- 125VDC POWER FROM STATION BATTERY "B" AT 2BYS-PNLB101 CKT #13.

DATE	DATE	DATE	DATE	DATE	DATE
PREPARED	PREPARED	PREPARED	PREPARED	PREPARED	PREPARED
APPROVED	APPROVED	APPROVED	APPROVED	APPROVED	APPROVED

TEST LOOP DIAGRAM
CONDENSER TRANSFER HEADER FLOW
2CNS-FT-114

NINE MILE POINT NUCLEAR STATION-UNIT 2
NIAGARA MOHAWK POWER CORPORATION

STONE & WEBSTER ENGINEERING CORPORATION

SHEET 1 OF 2
12177-TL2CNS-010

07-127-91
9305030228